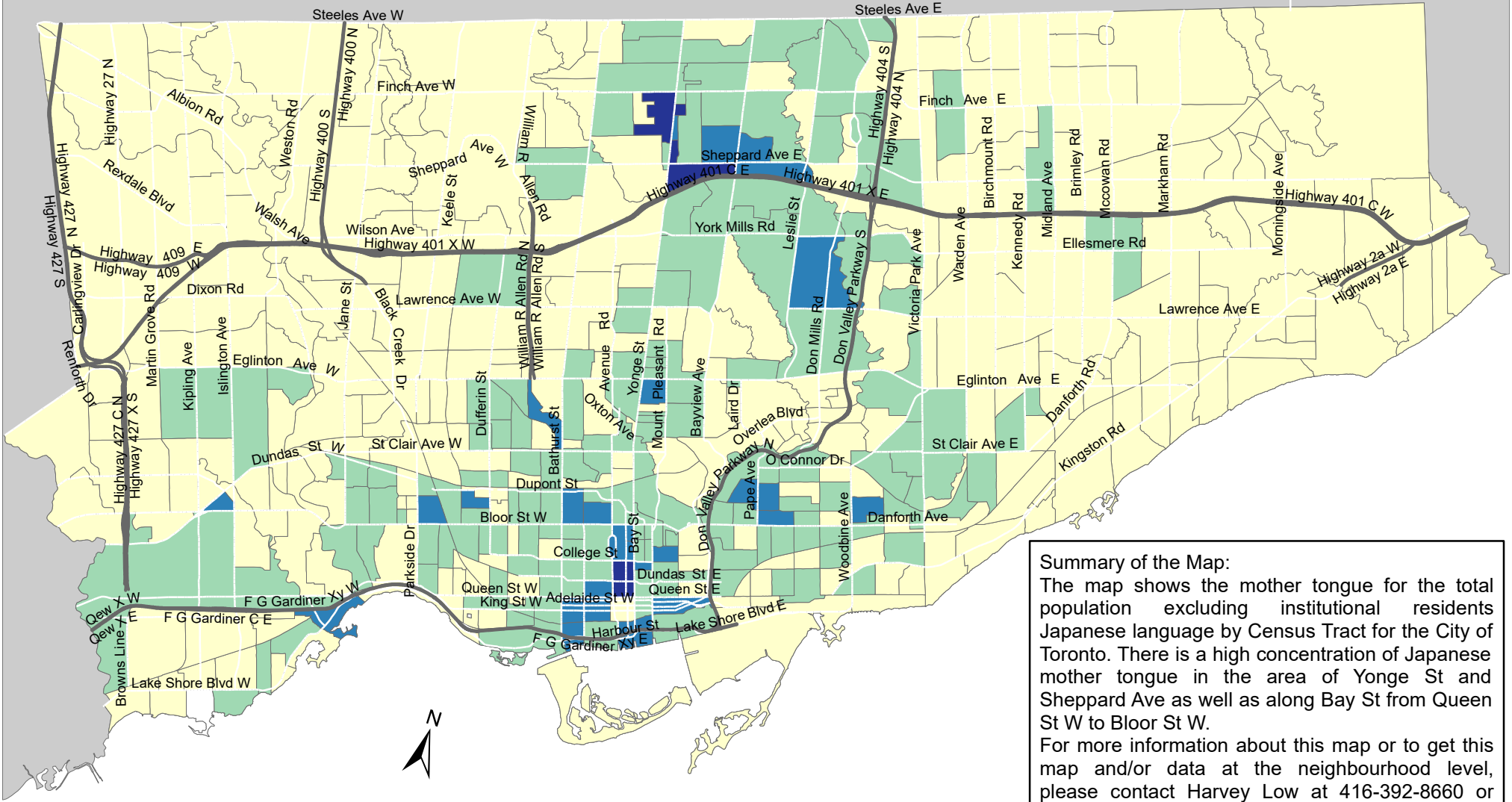


City of Toronto Mother Tongue - Japanese 2016



Summary of the Map:
 The map shows the mother tongue for the total population excluding institutional residents Japanese language by Census Tract for the City of Toronto. There is a high concentration of Japanese mother tongue in the area of Yonge St and Sheppard Ave as well as along Bay St from Queen St W to Bloor St W.
 For more information about this map or to get this map and/or data at the neighbourhood level, please contact Harvey Low at 416-392-8660 or harvey.low@toronto.ca.

Mother tongue for the total population - Japanese

 0 - 10	 Not available/ No data
 11 - 30	 Expressway
 31 - 65	 Major Arterial
 66 - 160	

Source: City of Toronto;
 Statistics Canada 2016 Census.

Copyright © 2018 City of Toronto. All Rights Reserved.
 Published: May 2018.

Prepared by: Social Research and Analysis Unit.
 Contact: spar@toronto.ca.