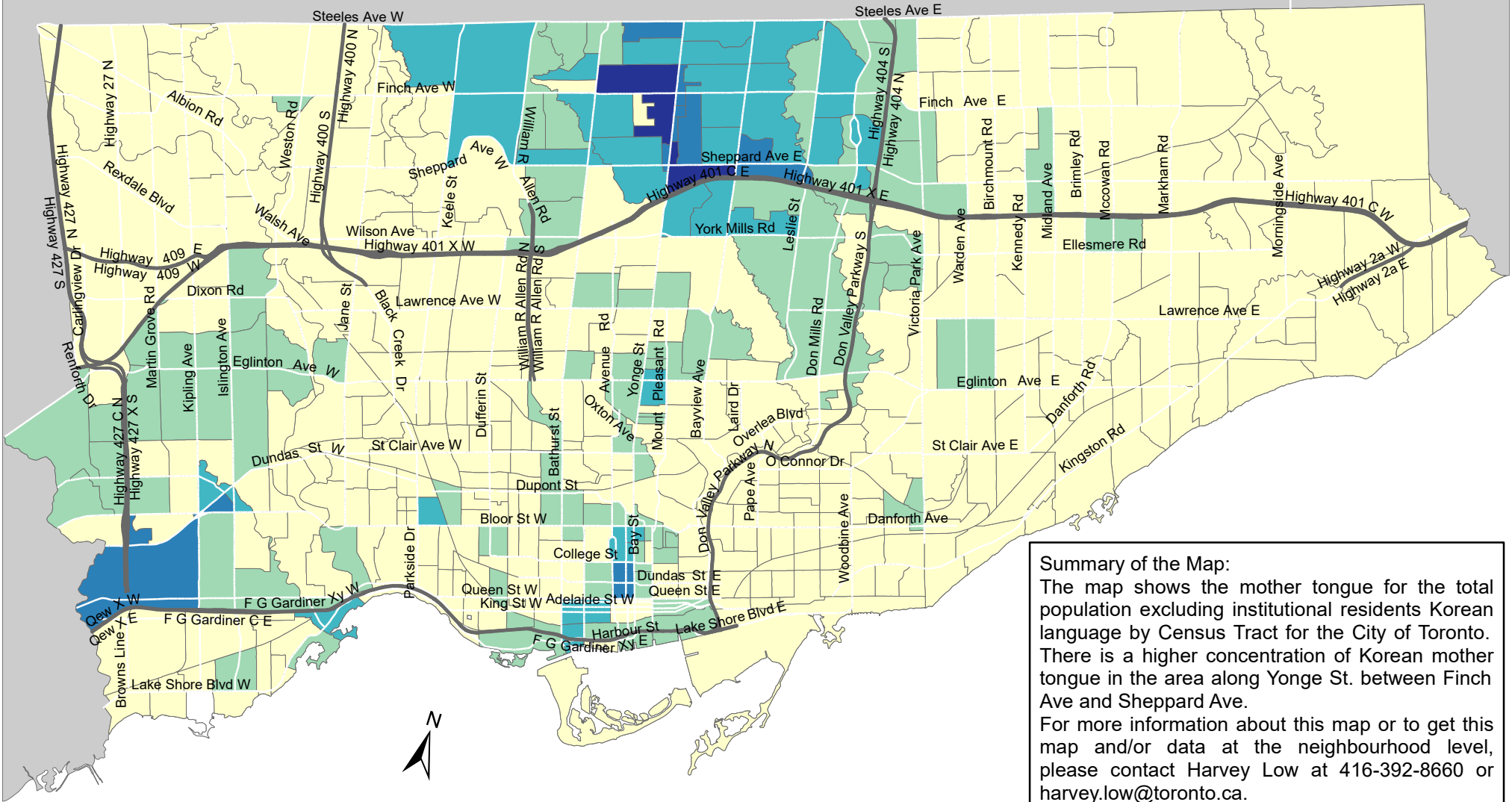


City of Toronto Mother Tongue - Korean 2016



Summary of the Map:
 The map shows the mother tongue for the total population excluding institutional residents Korean language by Census Tract for the City of Toronto. There is a higher concentration of Korean mother tongue in the area along Yonge St. between Finch Ave and Sheppard Ave. For more information about this map or to get this map and/or data at the neighbourhood level, please contact Harvey Low at 416-392-8660 or harvey.low@toronto.ca.

Mother tongue for the total population - Korean

- 0 - 45
- 46 - 150
- 151 - 380
- 381 - 725
- 726 - 1,460

- Not available/ No data
- Expressway
- Major Arterial

Source: City of Toronto;
 Statistics Canada 2016 Census.

Copyright © 2018 City of Toronto. All Rights Reserved.
 Published: May 2018.

Prepared by: Social Research and Analysis Unit.
 Contact: spar@toronto.ca.