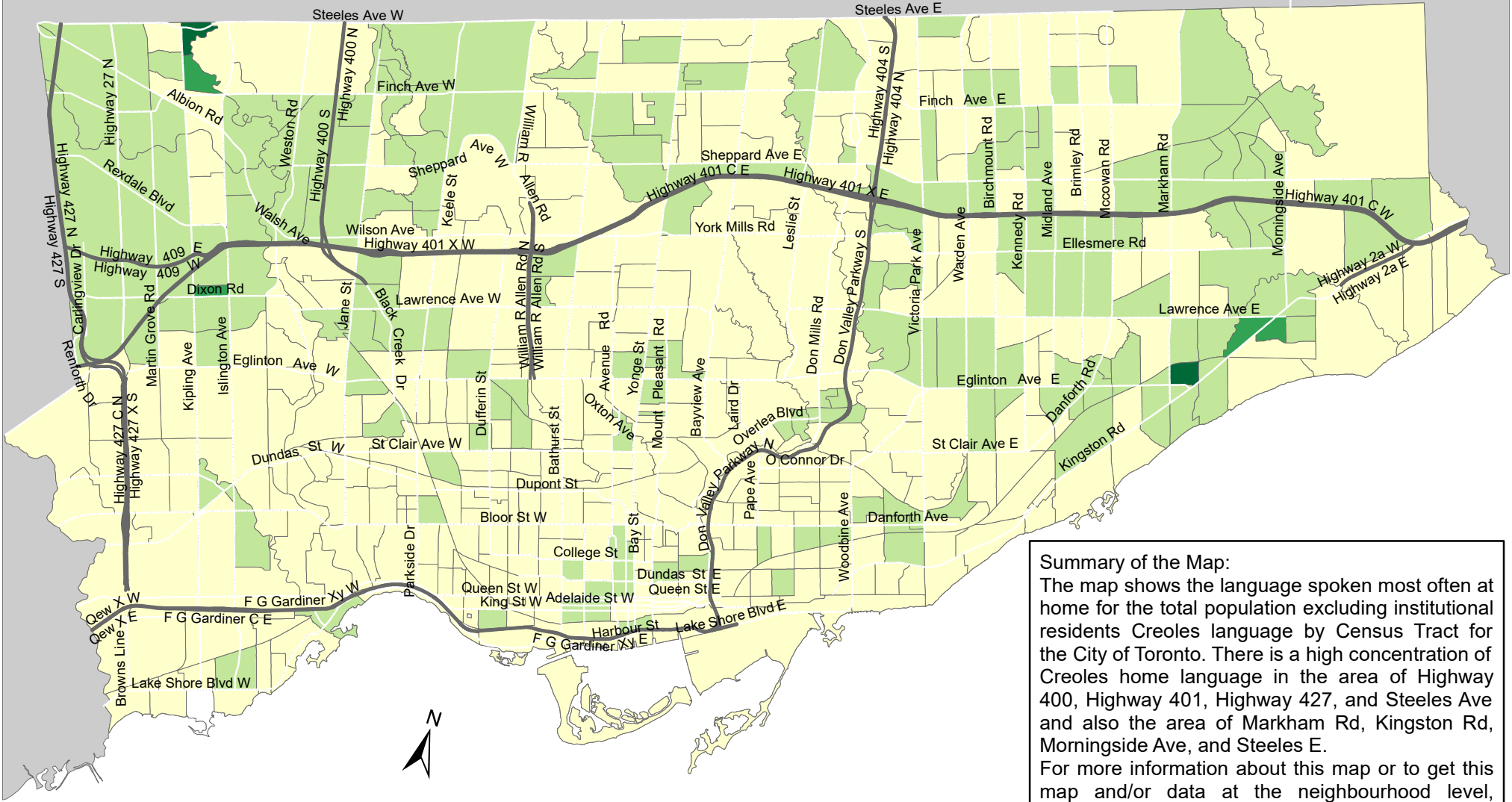
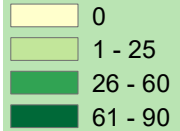


City of Toronto Home Language - Creoles 2016



Summary of the Map:
 The map shows the language spoken most often at home for the total population excluding institutional residents Creoles language by Census Tract for the City of Toronto. There is a high concentration of Creoles home language in the area of Highway 400, Highway 401, Highway 427, and Steeles Ave and also the area of Markham Rd, Kingston Rd, Morningside Ave, and Steeles E.
 For more information about this map or to get this map and/or data at the neighbourhood level, please contact Harvey Low at 416-392-8660 or harvey.low@toronto.ca.

Language spoken most often at home for the total population excluding institutional residents - Creole



- Not available/ No data
- Expressway
- Major Arterial

Source: City of Toronto; Statistics Canada 2016 Census.
 Copyright © 2018 City of Toronto. All Rights Reserved. Published: May 2018.
 Prepared by: Social Research and Analysis Unit. Contact: spar@toronto.ca.