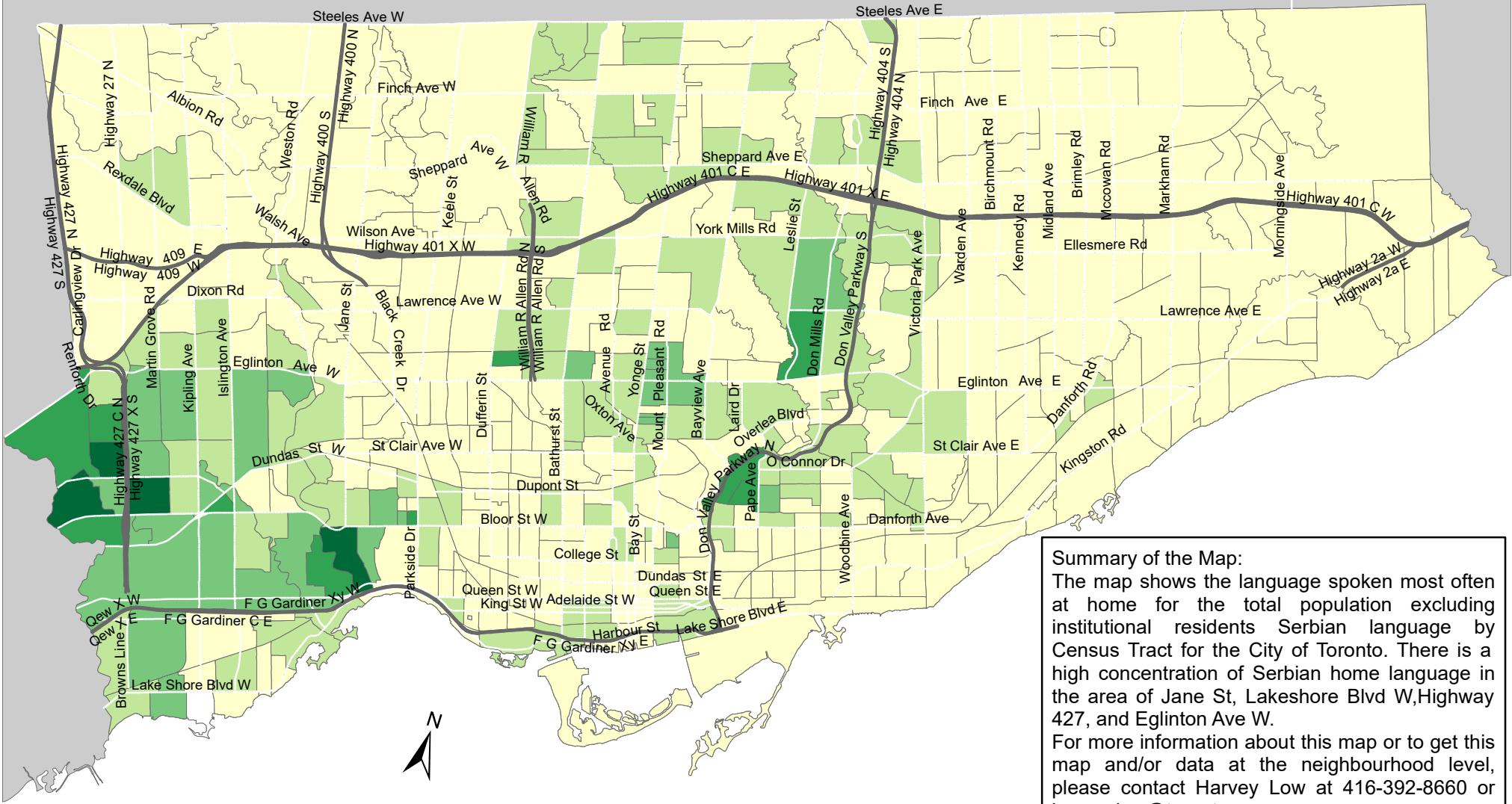
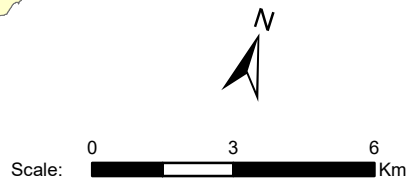


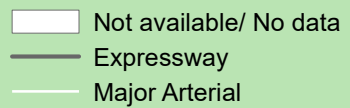
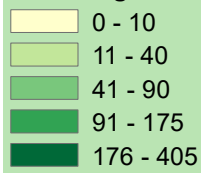
City of Toronto Home Language - Serbian 2016



Summary of the Map:
 The map shows the language spoken most often at home for the total population excluding institutional residents Serbian language by Census Tract for the City of Toronto. There is a high concentration of Serbian home language in the area of Jane St, Lakeshore Blvd W, Highway 427, and Eglinton Ave W.
 For more information about this map or to get this map and/or data at the neighbourhood level, please contact Harvey Low at 416-392-8660 or harvey.low@toronto.ca.



Language spoken most often at home for the total population excluding institutional residents - Serbian



Source: City of Toronto;
 Statistics Canada 2016 Census.
 Copyright © 2018 City of Toronto. All Rights Reserved.
 Published: May 2018.
 Prepared by: Social Research and Analysis Unit.
 Contact: spar@toronto.ca.