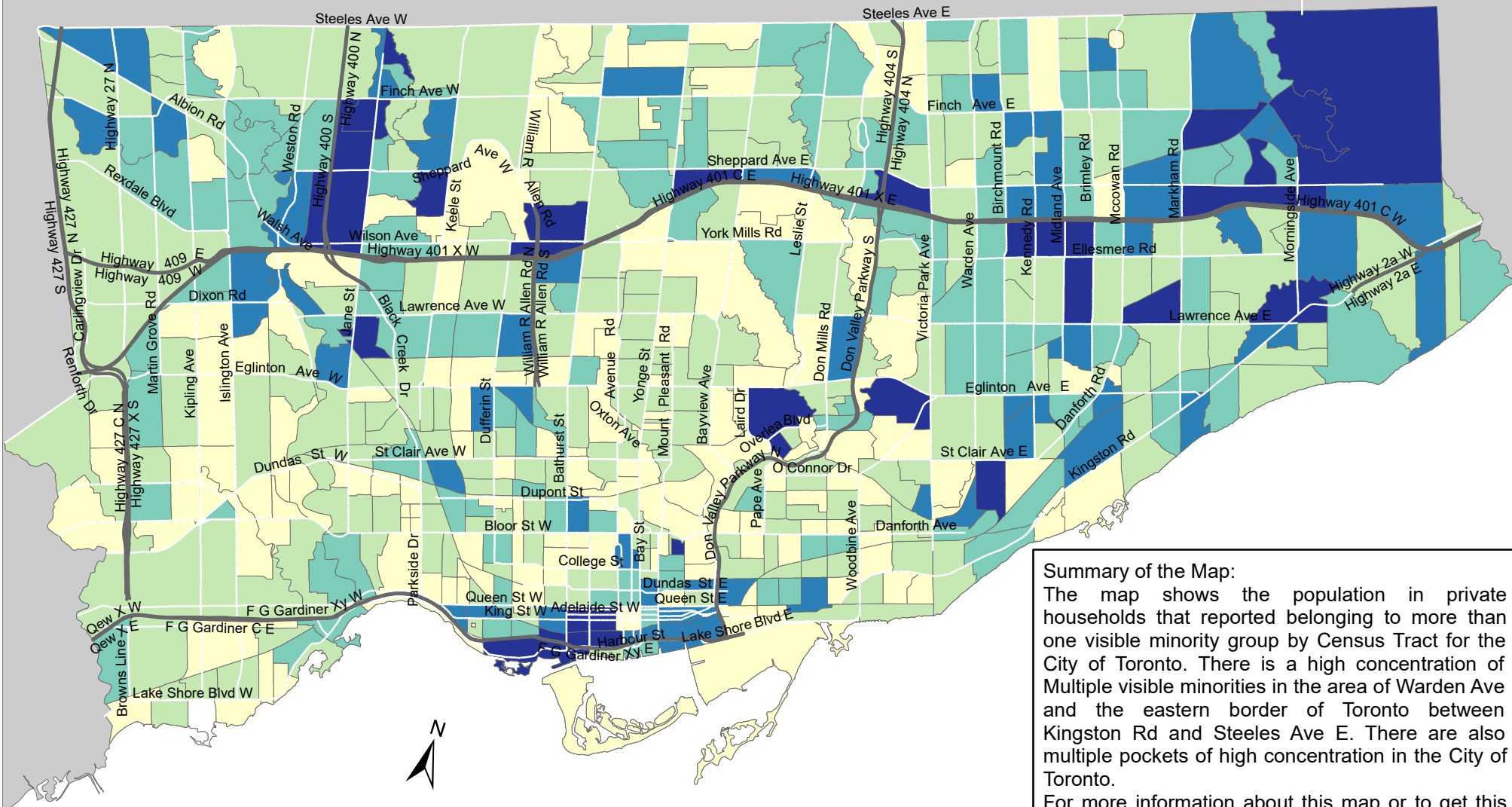


# City of Toronto Visible Minority - Multiple Visible Minorities 2016



**Summary of the Map:**  
 The map shows the population in private households that reported belonging to more than one visible minority group by Census Tract for the City of Toronto. There is a high concentration of Multiple visible minorities in the area of Warden Ave and the eastern border of Toronto between Kingston Rd and Steeles Ave E. There are also multiple pockets of high concentration in the City of Toronto.  
 For more information about this map or to get this map and/or data at the neighbourhood level, please contact Harvey Low at 416-392-8660 or

## Total Visible Minority Population - Multiple Visible Minorities

- 0 - 45
- 46 - 90
- 91 - 140
- 141 - 200
- 201 - 325

- Not available/ No data
- Expressway
- Major Arterial

Source: City of Toronto;  
 Statistics Canada 2016 Census.

Copyright © 2018 City of Toronto. All Rights Reserved.  
 Published: May 2018.

Prepared by: Social Research and Analysis Unit.  
 Contact: spar@toronto.ca.