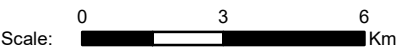
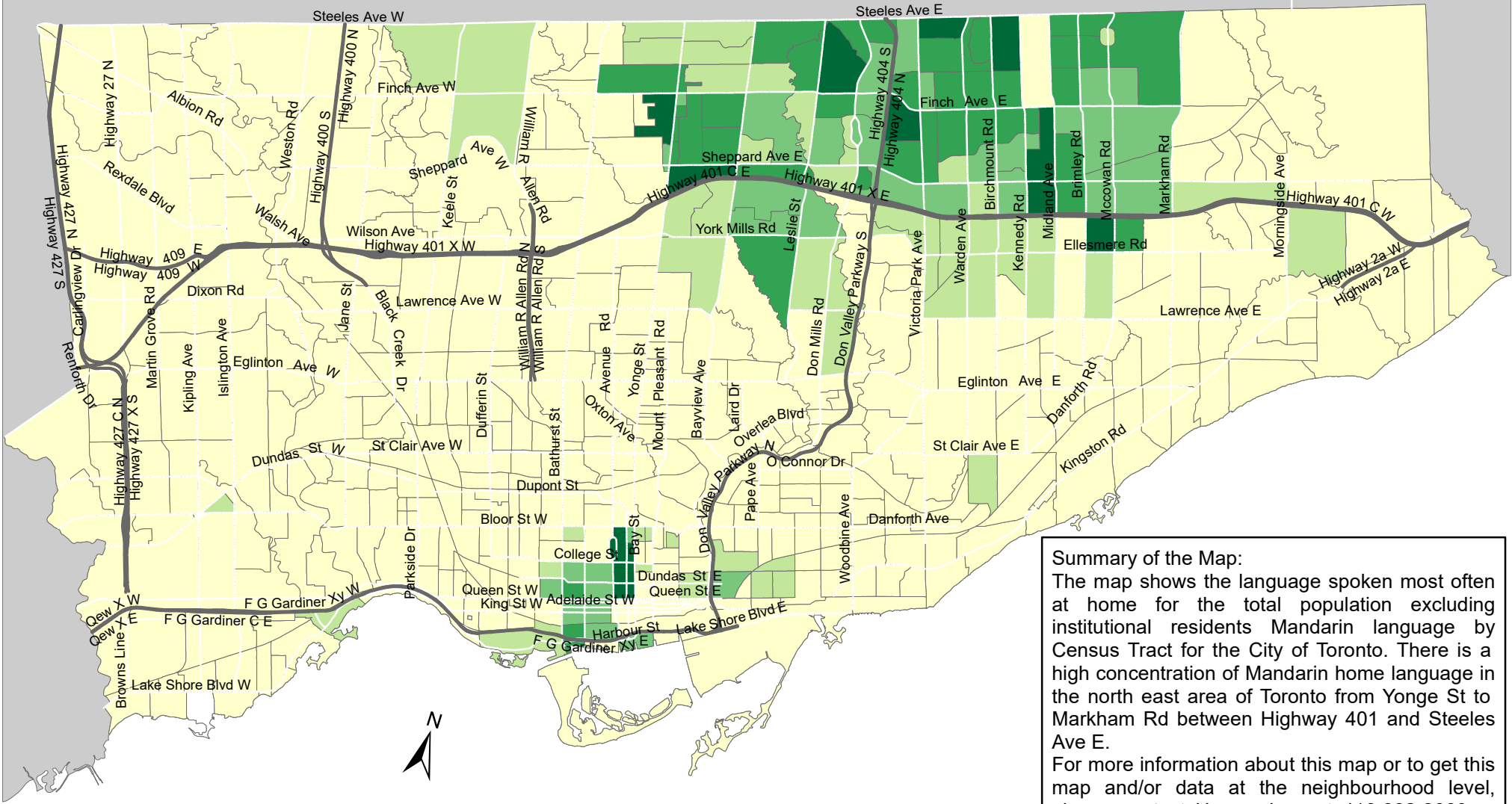


City of Toronto Home Language - Mandarin 2016



Summary of the Map:
 The map shows the language spoken most often at home for the total population excluding institutional residents Mandarin language by Census Tract for the City of Toronto. There is a high concentration of Mandarin home language in the north east area of Toronto from Yonge St to Markham Rd between Highway 401 and Steeles Ave E.
 For more information about this map or to get this map and/or data at the neighbourhood level, please contact Harvey Low at 416-392-8660 or harvey.low@toronto.ca.

Language spoken most often at home for the total population excluding institutional residents - Mandarin

- 0 - 135
- 136 - 350
- 351 - 600
- 601 - 1,085
- 1,086 - 2,145

- Not available/ No data
- Expressway
- Major Arterial

Source: City of Toronto; Statistics Canada 2016 Census.
 Copyright © 2018 City of Toronto. All Rights Reserved. Published: May 2018.
 Prepared by: Social Research and Analysis Unit. Contact: spar@toronto.ca.