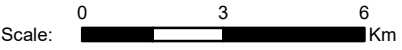
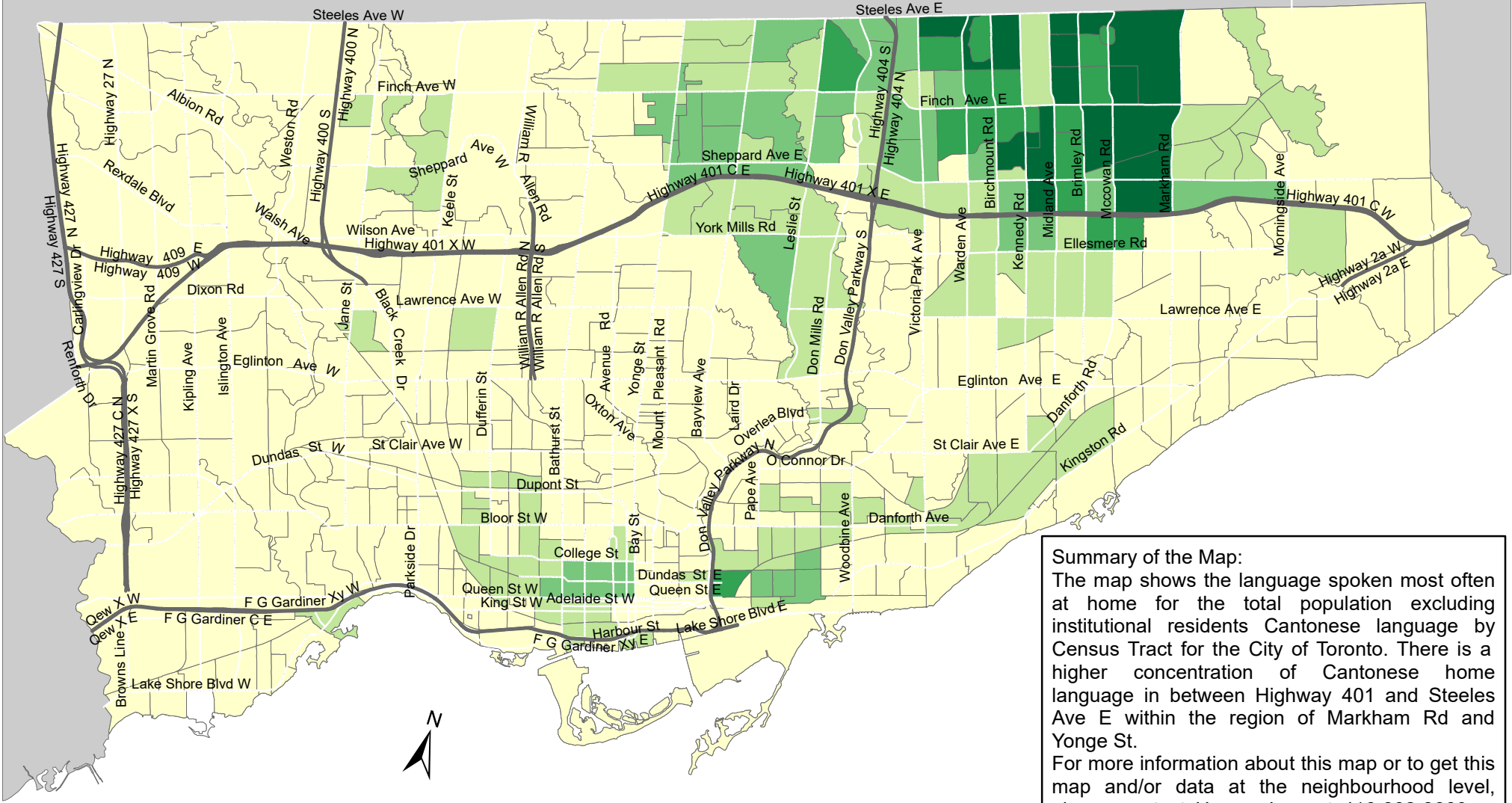


City of Toronto Home Language - Cantonese 2016



Summary of the Map:
 The map shows the language spoken most often at home for the total population excluding institutional residents Cantonese language by Census Tract for the City of Toronto. There is a higher concentration of Cantonese home language in between Highway 401 and Steeles Ave E within the region of Markham Rd and Yonge St.
 For more information about this map or to get this map and/or data at the neighbourhood level, please contact Harvey Low at 416-392-8660 or harvey.low@toronto.ca.

Language spoken most often at home for the total population excluding institutional residents - Cantonese

- 0 - 105
- 106 - 310
- 311 - 620
- 621 - 1,145
- 1,146 - 2,065

- Not available/ No data
- Expressway
- Major Arterial

Source: City of Toronto; Statistics Canada 2016 Census.
 Copyright © 2018 City of Toronto. All Rights Reserved. Published: May 2018.
 Prepared by: Social Research and Analysis Unit. Contact: spar@toronto.ca.