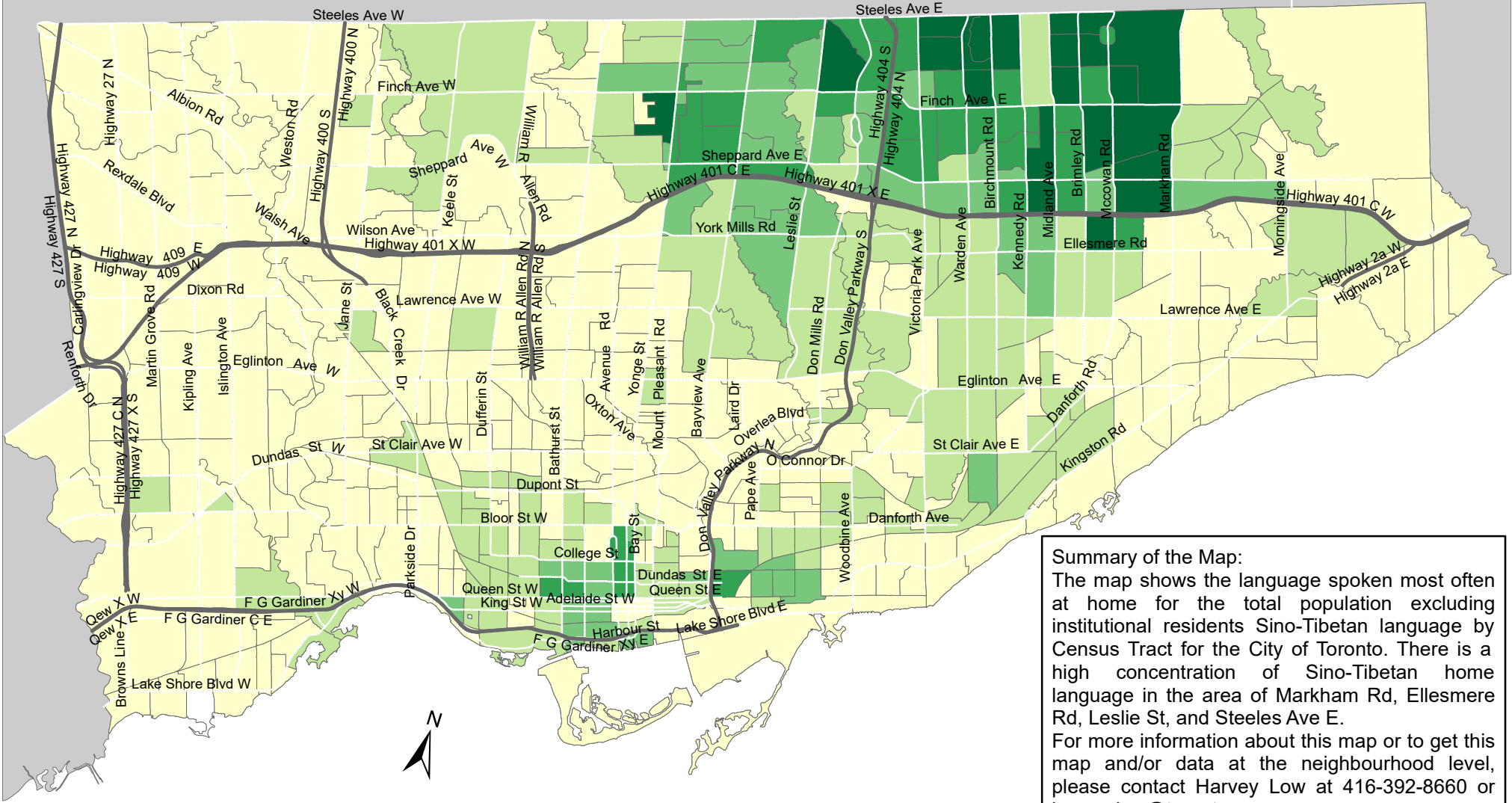


City of Toronto Home Language - Sino-Tibetan 2016



Summary of the Map:
 The map shows the language spoken most often at home for the total population excluding institutional residents Sino-Tibetan language by Census Tract for the City of Toronto. There is a high concentration of Sino-Tibetan home language in the area of Markham Rd, Ellesmere Rd, Leslie St, and Steeles Ave E.
 For more information about this map or to get this map and/or data at the neighbourhood level, please contact Harvey Low at 416-392-8660 or harvey.low@toronto.ca.

Language spoken most often at home for the total population excluding institutional residents - Sino-Tibetan

- 0 - 150
- 151 - 480
- 481 - 1,075
- 1,076 - 1,885
- 1,886 - 4,285

- Not available/ No data
- Expressway
- Major Arterial

Source: City of Toronto; Statistics Canada 2016 Census.
 Copyright © 2018 City of Toronto. All Rights Reserved. Published: May 2018.
 Prepared by: Social Research and Analysis Unit. Contact: spar@toronto.ca.