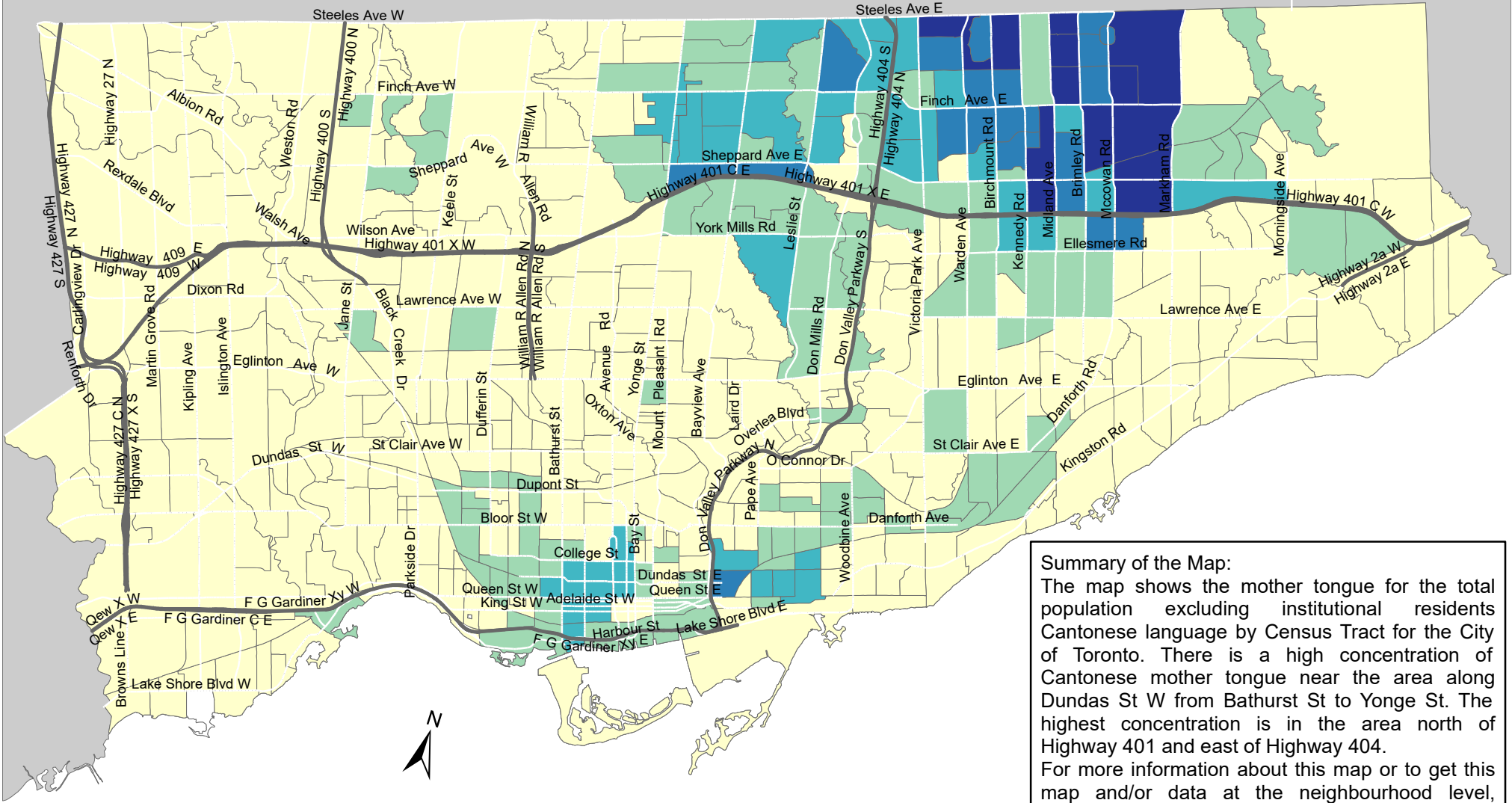


City of Toronto Mother Tongue - Cantonese 2016



Summary of the Map:
 The map shows the mother tongue for the total population excluding institutional residents Cantonese language by Census Tract for the City of Toronto. There is a high concentration of Cantonese mother tongue near the area along Dundas St W from Bathurst St to Yonge St. The highest concentration is in the area north of Highway 401 and east of Highway 404.
 For more information about this map or to get this map and/or data at the neighbourhood level, please contact Harvey Low at 416-392-8660 or harvey.low@toronto.ca.

Mother tongue for the total population - Cantonese

- 0 - 145
- 146 - 405
- 406 - 800
- 801 - 1,405
- 1,406 - 2,340

- Not available/ No data
- Expressway
- Major Arterial

Source: City of Toronto;
 Statistics Canada 2016 Census.
 Copyright © 2018 City of Toronto. All Rights Reserved.
 Published: May 2018.
 Prepared by: Social Research and Analysis Unit.
 Contact: spar@toronto.ca.