

# introduction to the project

panel 1

scope of work

## Investigations and Schematic Design

MAY TO JULY 2018

site analysis, review  
of documents,  
design concepts

## Detailed Design

JULY TO AUG 2018

synthesis of public  
meeting feedback into  
detailed design, review  
with City staff

## Contract Documentation

SEPT TO DEC 2018

preparation of working  
drawings and  
specifications for tender

## Tender and Contract Administration

APR TO SEPT 2019

project tendering,  
supervision of  
construction until  
completion

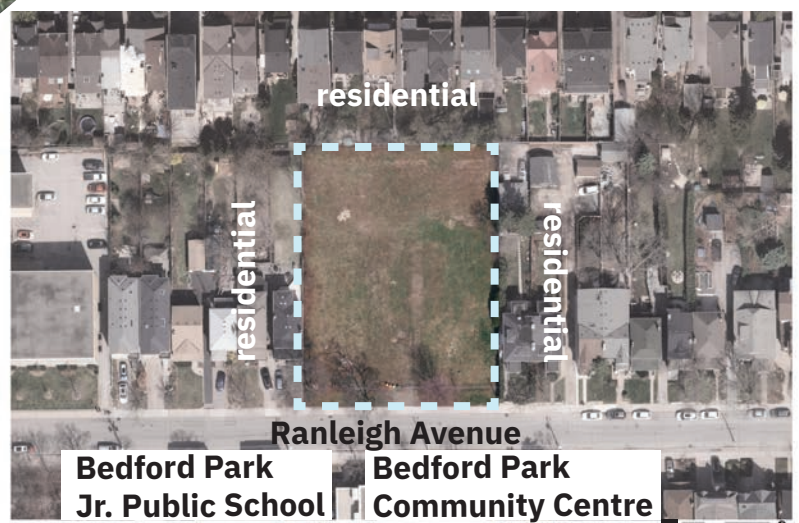
location



Ranleigh Park, at 100 Ranleigh Ave., is a 0.25 ha new City park that was previously occupied by a church (demolished in 2011-2012). The site currently sits vacant with four monitoring wells that will be decommissioned. Environmental Site Assessments have been completed, showing the soil is contaminated mostly in the footprint of the old church. As part of the environmental remediation process, it is expected that the contaminated soils will be removed from the site following a more extensive investigation into the extent of contamination.



estimated extent of contaminated soil







**northwest corner**



**northeast corner**



**looking west**



**looking east**



**looking south onto community centre and school**



**looking east onto Ranleigh Ave**



**site panorama**



# introduction to the project

panel 3

## neighboring facilities

Redesign of Ranleigh Park will take into account the facilities and equipment available at the adjacent Bedford Park Junior Public School and Bedford Park Community Centre, just south of the site.



**school grounds baseball and track**



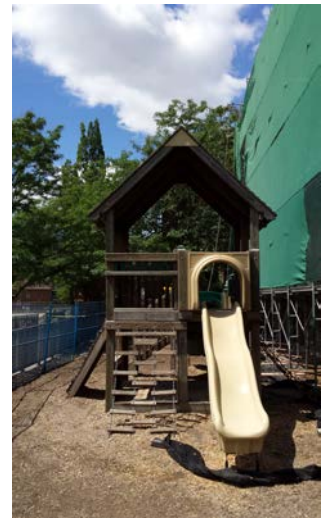
**school grounds play court**



**school grounds basketball**



**school grounds play structure (ages 5+)**



**school grounds play structure (ages ≤ 5)**



**school grounds climber (ages 5+)**

## site design programming

Stakeholder consultation thus far has revealed that the community desires Ranleigh Park to accommodate the following passive and active programming. The initial design concepts on the following panels provide for some or all of these uses.

**Horticulture & Seating**

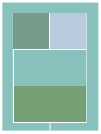
**Junior Play (ages ≤ 5)**

**Adult Fitness**

**Outdoor Dining**



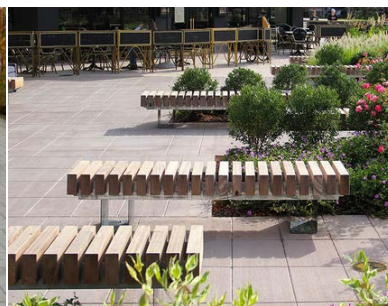




precedents



benches



communal dining



games tables



ping pong







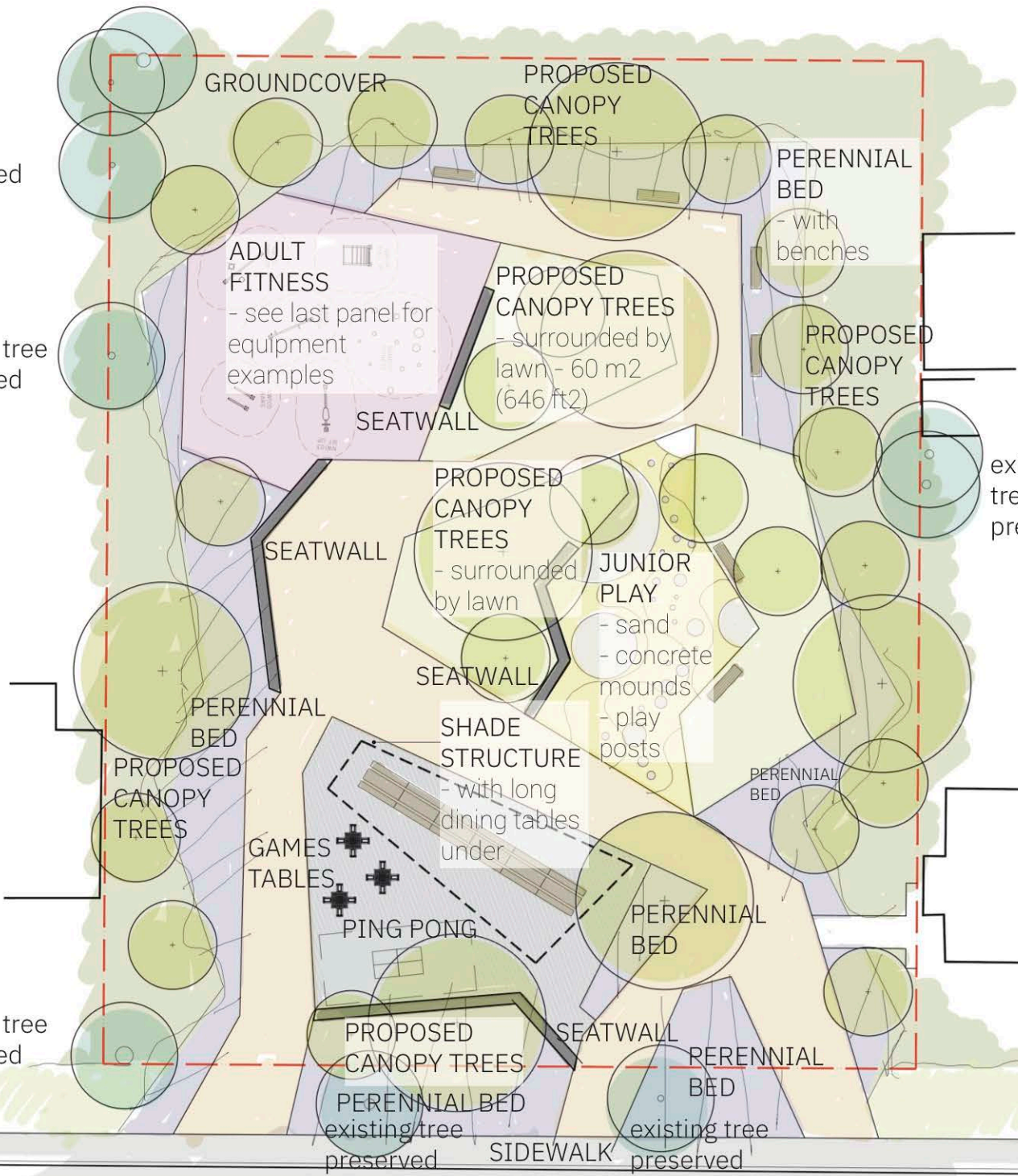
existing trees preserved

existing tree preserved

existing trees preserved

existing tree preserved

existing tree preserved







## precedents



## seatwalls



## shade structure



## junior play



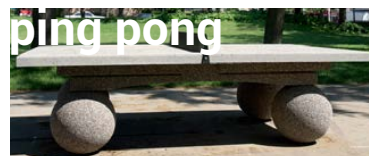
## communal dining



## games tables



## ping pong





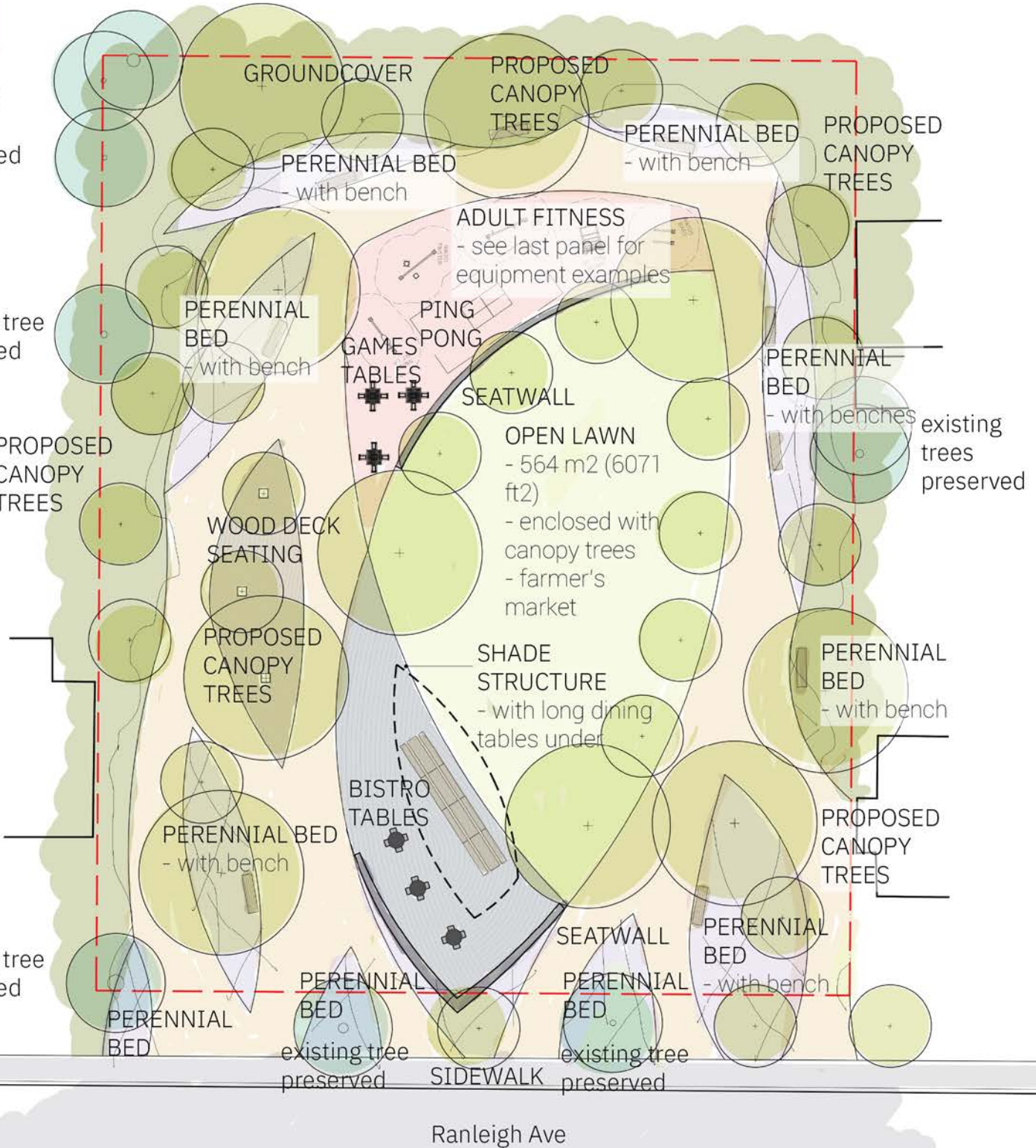


existing trees preserved

existing tree preserved

PROPOSED CANOPY TREES

existing tree preserved







precedents





adult fitness



junior play

