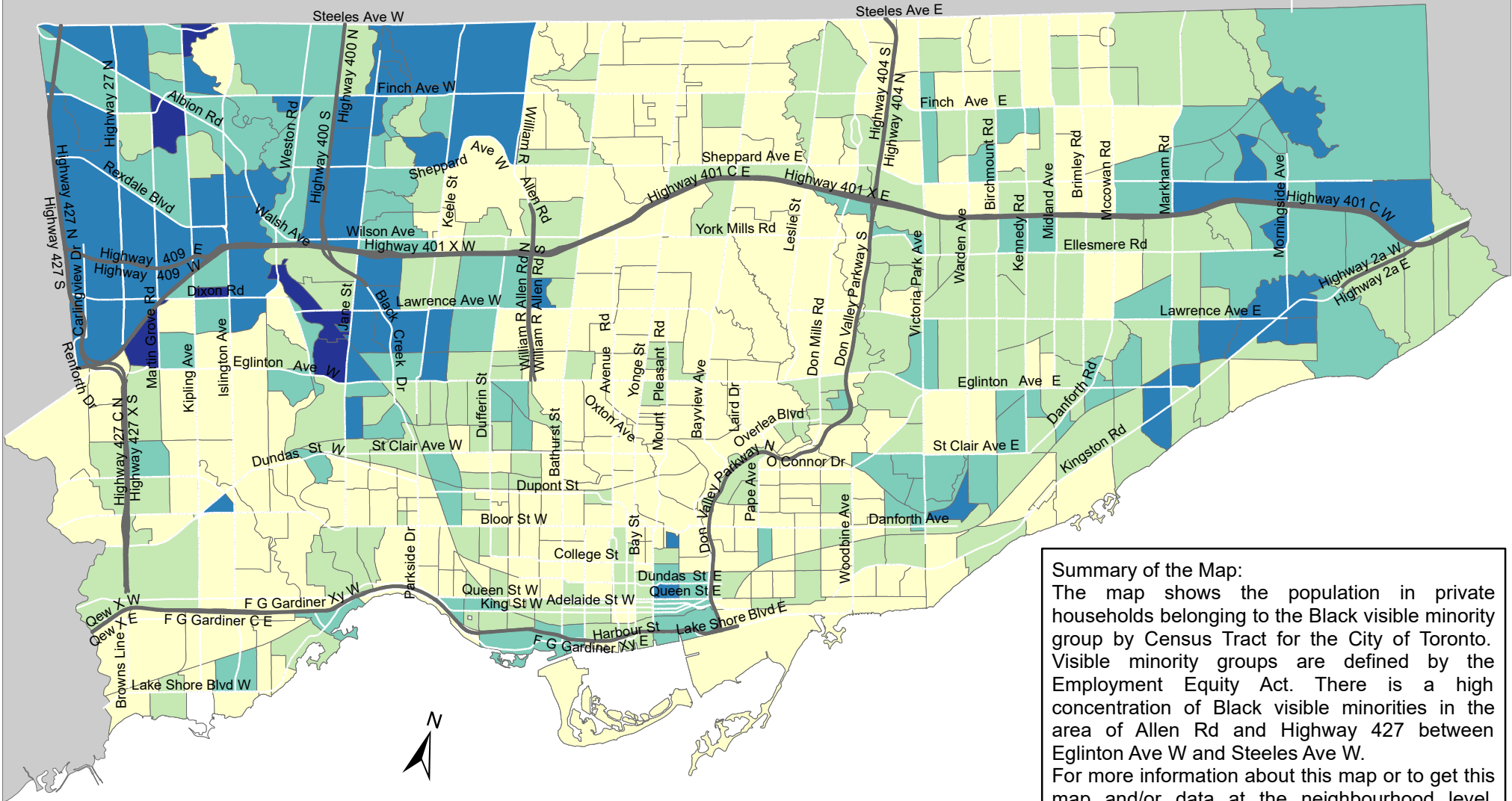


City of Toronto Visible Minority - Black 2016



Summary of the Map:
 The map shows the population in private households belonging to the Black visible minority group by Census Tract for the City of Toronto. Visible minority groups are defined by the Employment Equity Act. There is a high concentration of Black visible minorities in the area of Allen Rd and Highway 427 between Eglinton Ave W and Steeles Ave W. For more information about this map or to get this map and/or data at the neighbourhood level, please contact Harvey Low at 416-392-8660 or harvey.low@toronto.ca.

Total Visible Minority Population - Black

- 0 - 240
- 241 - 580
- 581 - 1,095
- 1,096 - 1,900
- 1,901 - 3,455

- Not available/ No data
- Expressway
- Major Arterial

Source: City of Toronto;
 Statistics Canada 2016 Census.
 Copyright © 2018 City of Toronto. All Rights Reserved.
 Published: May 2018.
 Prepared by: Social Research and Analysis Unit.
 Contact: spar@toronto.ca.