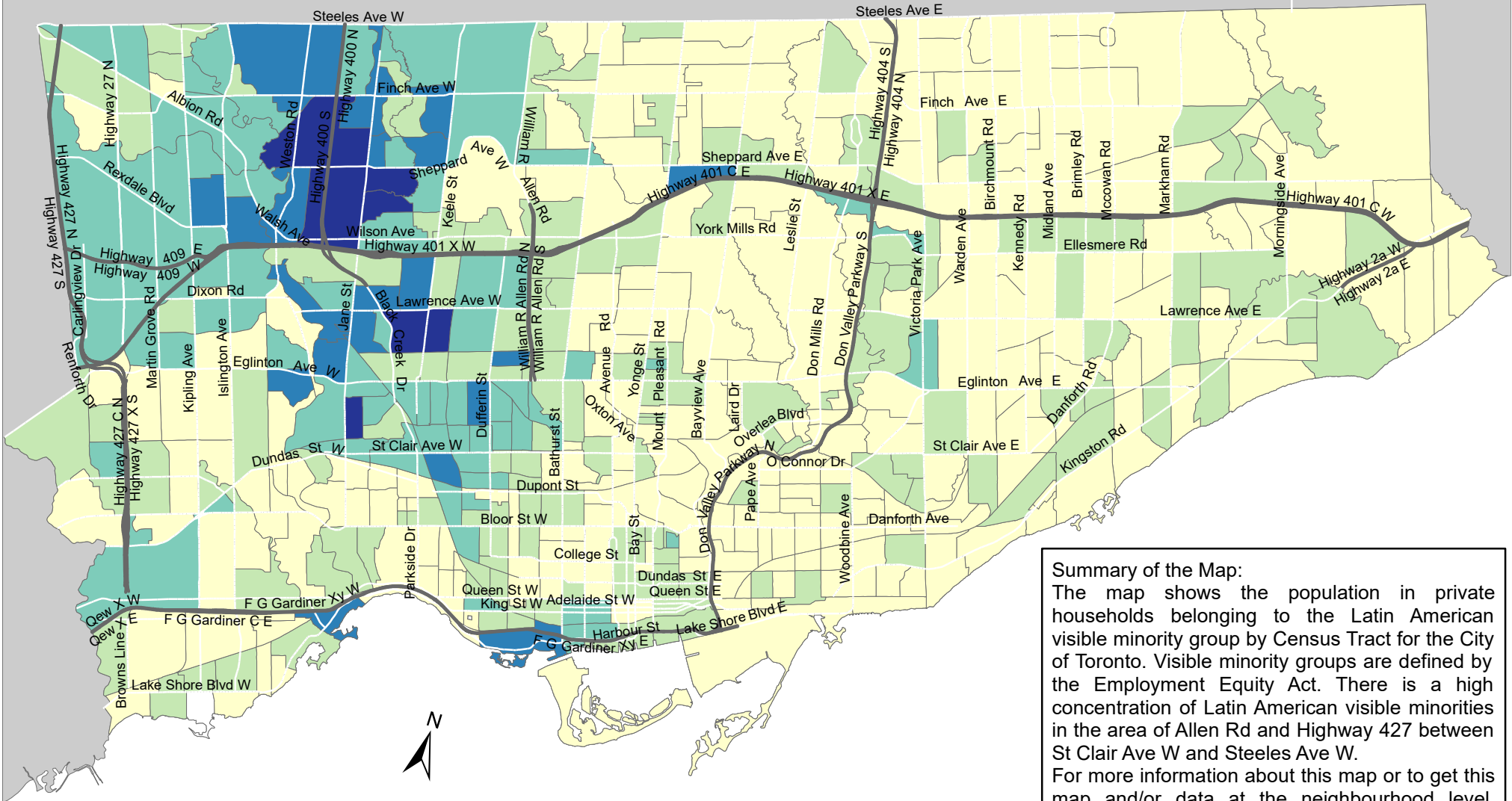
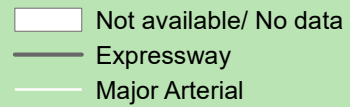
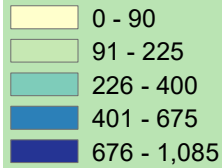


# City of Toronto Visible Minority - Latin American 2016



**Summary of the Map:**  
 The map shows the population in private households belonging to the Latin American visible minority group by Census Tract for the City of Toronto. Visible minority groups are defined by the Employment Equity Act. There is a high concentration of Latin American visible minorities in the area of Allen Rd and Highway 427 between St Clair Ave W and Steeles Ave W.  
 For more information about this map or to get this map and/or data at the neighbourhood level, please contact Harvey Low at 416-392-8660 or [harvey.low@toronto.ca](mailto:harvey.low@toronto.ca).

## Total Visible Minority Population - Latin American



Source: City of Toronto;  
 Statistics Canada 2016 Census.  
 Copyright © 2018 City of Toronto. All Rights Reserved.  
 Published: May 2018.  
 Prepared by: Social Research and Analysis Unit.  
 Contact: [spar@toronto.ca](mailto:spar@toronto.ca).