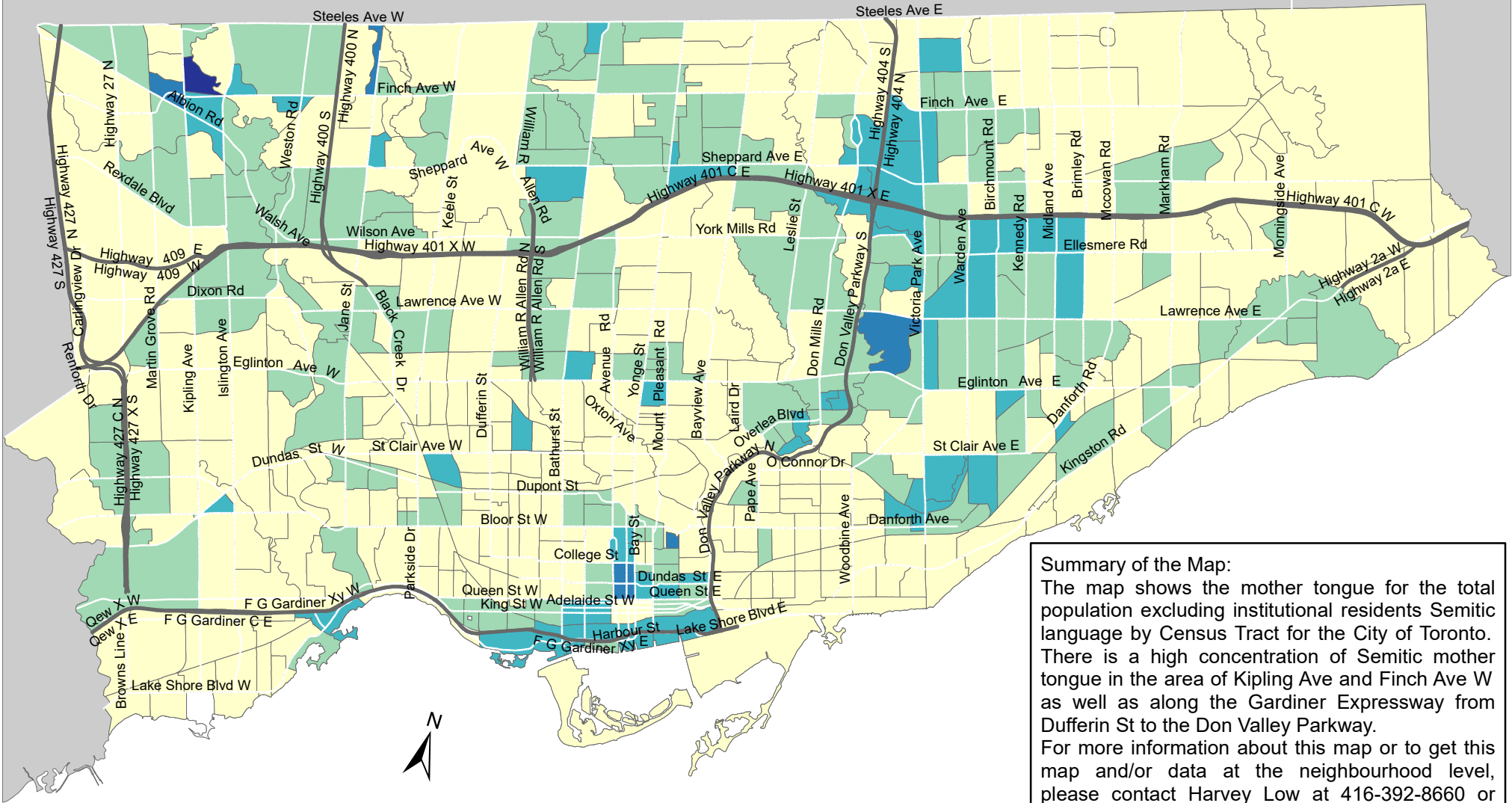
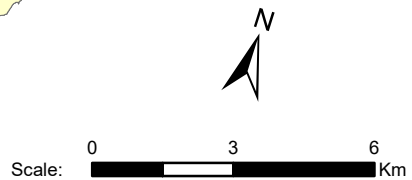


# City of Toronto Mother Tongue - Semitic 2016



**Summary of the Map:**  
 The map shows the mother tongue for the total population excluding institutional residents Semitic language by Census Tract for the City of Toronto. There is a high concentration of Semitic mother tongue in the area of Kipling Ave and Finch Ave W as well as along the Gardiner Expressway from Dufferin St to the Don Valley Parkway. For more information about this map or to get this map and/or data at the neighbourhood level, please contact Harvey Low at 416-392-8660 or [harvey.low@toronto.ca](mailto:harvey.low@toronto.ca).



**Mother tongue for the total population - Semitic**

- 0 - 75
- 76 - 185
- 186 - 545
- 546 - 1,195
- 1,196 - 2,480

- Not available/ No data
- Expressway
- Major Arterial

Source: City of Toronto;  
 Statistics Canada 2016 Census.  
 Copyright © 2018 City of Toronto. All Rights Reserved.  
 Published: May 2018.  
 Prepared by: Social Research and Analysis Unit.  
 Contact: [spar@toronto.ca](mailto:spar@toronto.ca).