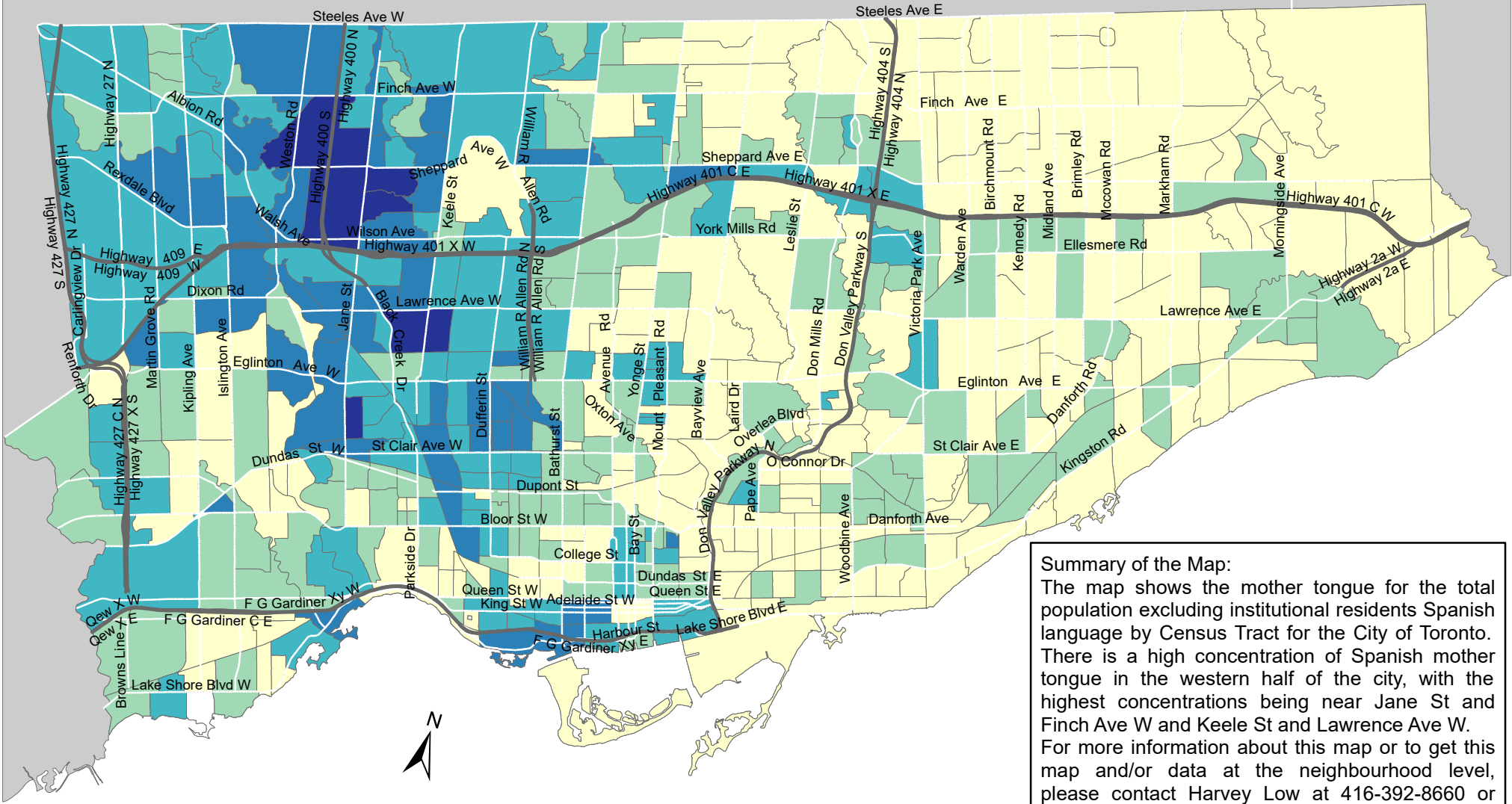
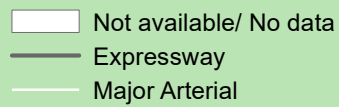
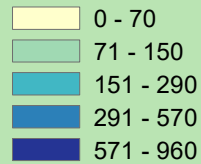


City of Toronto Mother Tongue - Spanish 2016



Summary of the Map:
 The map shows the mother tongue for the total population excluding institutional residents Spanish language by Census Tract for the City of Toronto. There is a high concentration of Spanish mother tongue in the western half of the city, with the highest concentrations being near Jane St and Finch Ave W and Keele St and Lawrence Ave W. For more information about this map or to get this map and/or data at the neighbourhood level, please contact Harvey Low at 416-392-8660 or harvey.low@toronto.ca.

Mother tongue for the total population - Spanish



Source: City of Toronto;
 Statistics Canada 2016 Census.
 Copyright © 2018 City of Toronto. All Rights Reserved.
 Published: May 2018.
 Prepared by: Social Research and Analysis Unit.
 Contact: spar@toronto.ca.