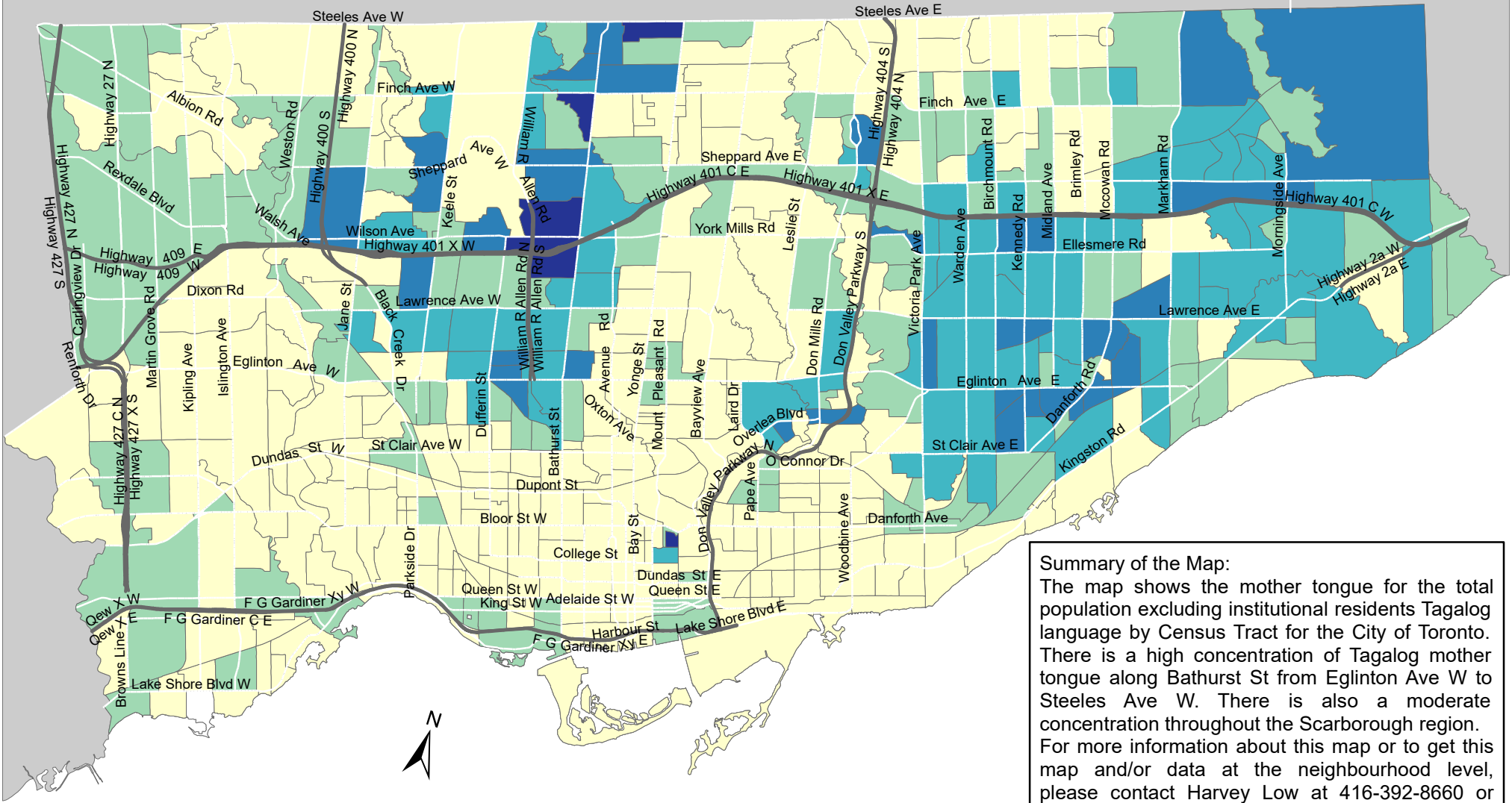


City of Toronto Mother Tongue - Tagalog 2016



Summary of the Map:
 The map shows the mother tongue for the total population excluding institutional residents Tagalog language by Census Tract for the City of Toronto. There is a high concentration of Tagalog mother tongue along Bathurst St from Eglinton Ave W to Steeles Ave W. There is also a moderate concentration throughout the Scarborough region. For more information about this map or to get this map and/or data at the neighbourhood level, please contact Harvey Low at 416-392-8660 or harvey.low@toronto.ca.

Mother tongue for the total population - Tagalog

- 0 - 105
- 106 - 240
- 241 - 425
- 426 - 815
- 816 - 1,395

- Not available/ No data
- Expressway
- Major Arterial

Source: City of Toronto;
 Statistics Canada 2016 Census.

Copyright © 2018 City of Toronto. All Rights Reserved.
 Published: May 2018.

Prepared by: Social Research and Analysis Unit.
 Contact: spar@toronto.ca.