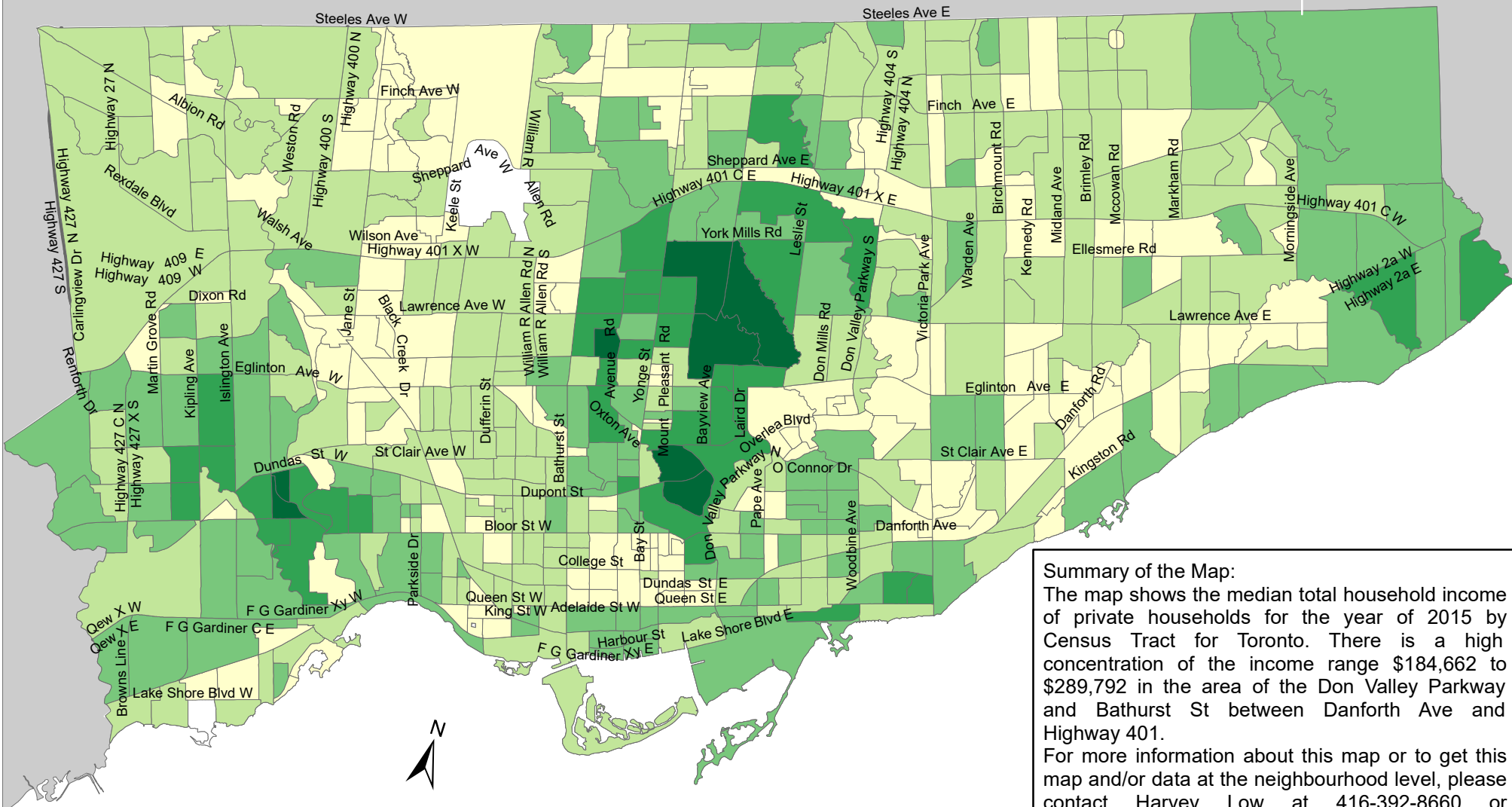


City of Toronto Income - Median Total Household Income 2015



Summary of the Map:
 The map shows the median total household income of private households for the year of 2015 by Census Tract for Toronto. There is a high concentration of the income range \$184,662 to \$289,792 in the area of the Don Valley Parkway and Bathurst St between Danforth Ave and Highway 401.
 For more information about this map or to get this map and/or data at the neighbourhood level, please contact Harvey Low at 416-392-8660 or harvey.low@toronto.ca.

Median Pre-tax Household Income		Not available/ No data
	\$22,208 - \$57,830	
	\$57,831 - \$79,892	
	\$79,893 - \$115,456	
	\$115,457 - \$184,661	
	\$184,662 - \$289,792	

Source: City of Toronto;
 Statistics Canada 2016 Census.
 Copyright © 2018 City of Toronto. All Rights Reserved.
 Published: May 2018.
 Prepared by: Social Research and Analysis Unit.
 Contact: spar@toronto.ca.