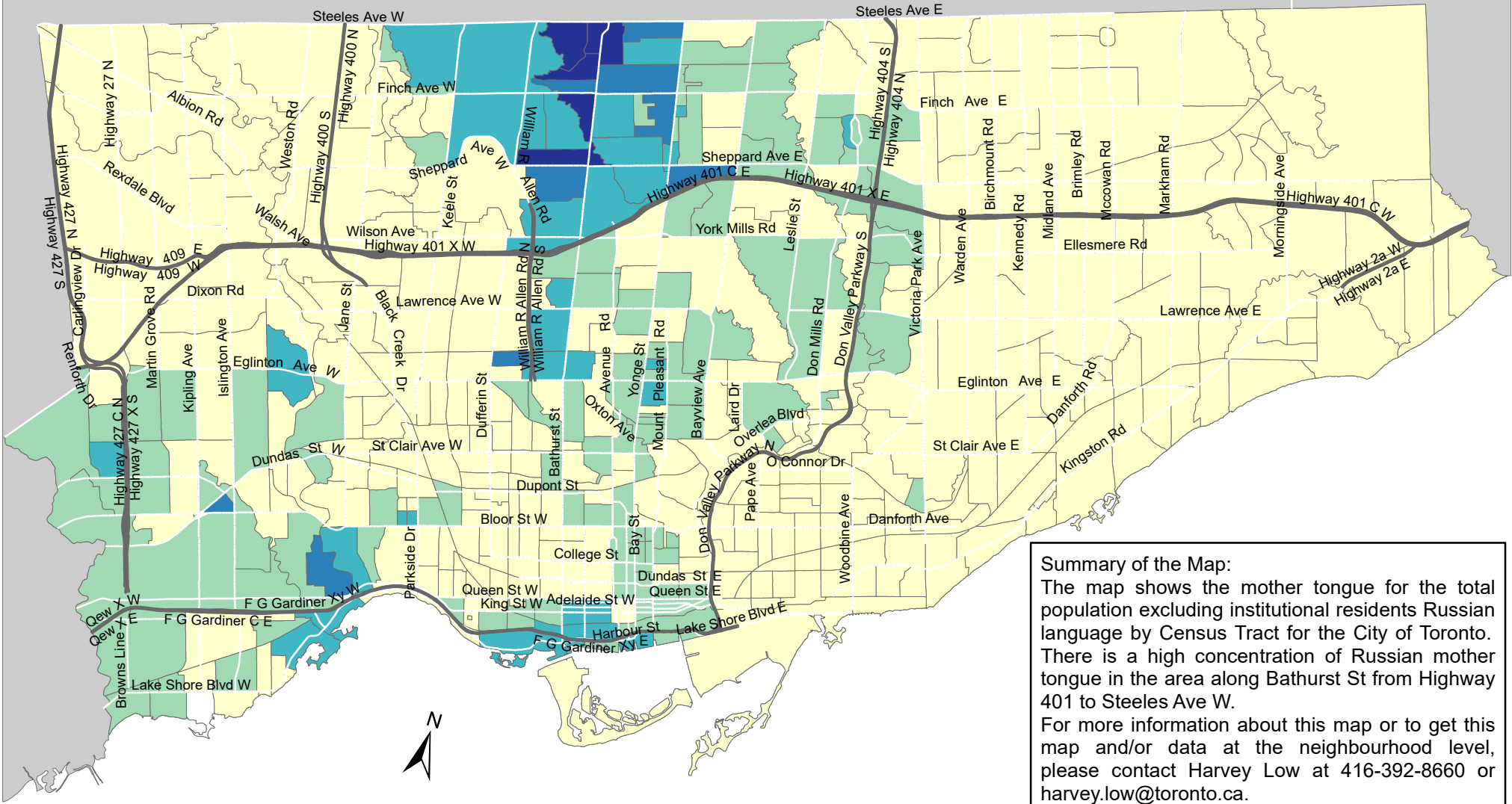


City of Toronto Mother Tongue - Russian 2016



Summary of the Map:
 The map shows the mother tongue for the total population excluding institutional residents Russian language by Census Tract for the City of Toronto. There is a high concentration of Russian mother tongue in the area along Bathurst St from Highway 401 to Steeles Ave W.
 For more information about this map or to get this map and/or data at the neighbourhood level, please contact Harvey Low at 416-392-8660 or harvey.low@toronto.ca.

Mother tongue for the total population - Russian

- 0 - 50
- 51 - 150
- 151 - 340
- 341 - 785
- 786 - 1,950

- Not available/ No data
- Expressway
- Major Arterial

Source: City of Toronto;
 Statistics Canada 2016 Census.
 Copyright © 2018 City of Toronto. All Rights Reserved.
 Published: May 2018.
 Prepared by: Social Research and Analysis Unit.
 Contact: spar@toronto.ca.