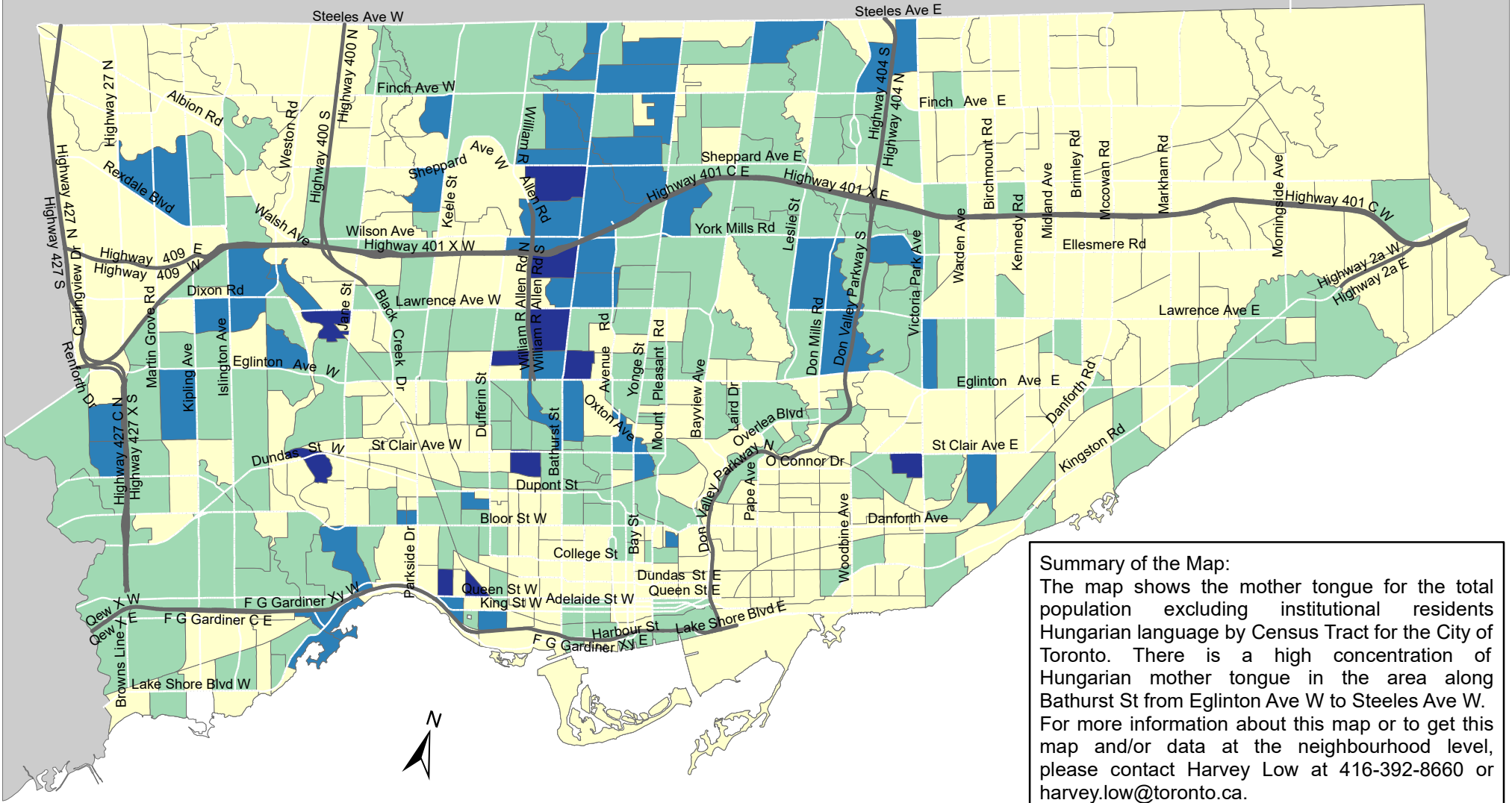
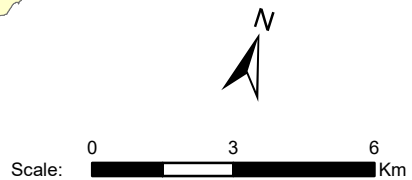


# City of Toronto Mother Tongue - Hungarian 2016



**Summary of the Map:**  
 The map shows the mother tongue for the total population excluding institutional residents Hungarian language by Census Tract for the City of Toronto. There is a high concentration of Hungarian mother tongue in the area along Bathurst St from Eglinton Ave W to Steeles Ave W. For more information about this map or to get this map and/or data at the neighbourhood level, please contact Harvey Low at 416-392-8660 or [harvey.low@toronto.ca](mailto:harvey.low@toronto.ca).



<b>Mother tongue for the total population - Hungarian</b>	Not available/ No data
0 - 15	Expressway
16 - 40	Major Arterial
41 - 90	
91 - 160	

Source: City of Toronto;  
 Statistics Canada 2016 Census.

Copyright © 2018 City of Toronto. All Rights Reserved.  
 Published: May 2018.

Prepared by: Social Research and Analysis Unit.  
 Contact: [spar@toronto.ca](mailto:spar@toronto.ca).