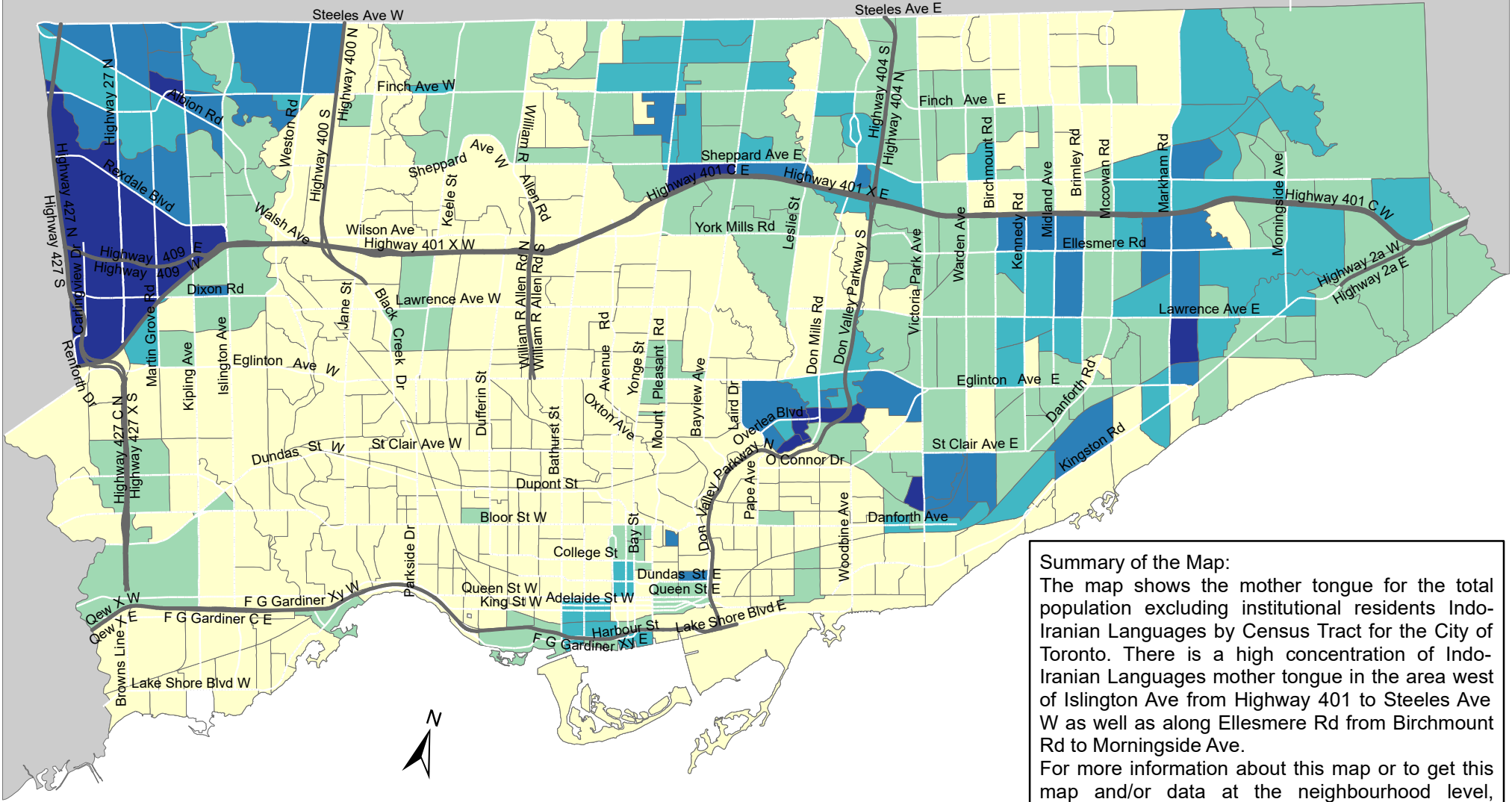


City of Toronto Mother Tongue - Indo-Iranian Languages 2016



Summary of the Map:
 The map shows the mother tongue for the total population excluding institutional residents Indo-Iranian Languages by Census Tract for the City of Toronto. There is a high concentration of Indo-Iranian Languages mother tongue in the area west of Islington Ave from Highway 401 to Steeles Ave W as well as along Ellesmere Rd from Birchmount Rd to Morningside Ave.
 For more information about this map or to get this map and/or data at the neighbourhood level, please contact Harvey Low at 416-392-8660 or harvey.low@toronto.ca.

Mother tongue for the total population - Indo-Iranian Languages		Not available/ No data Expressway Major Arterial	Source: City of Toronto; Statistics Canada 2016 Census. Copyright © 2018 City of Toronto. All Rights Reserved. Published: May 2018. Prepared by: Social Research and Analysis Unit. Contact: spar@toronto.ca .
0 - 230 231 - 580 581 - 1,085 1,086 - 2,105 2,106 - 3,770			