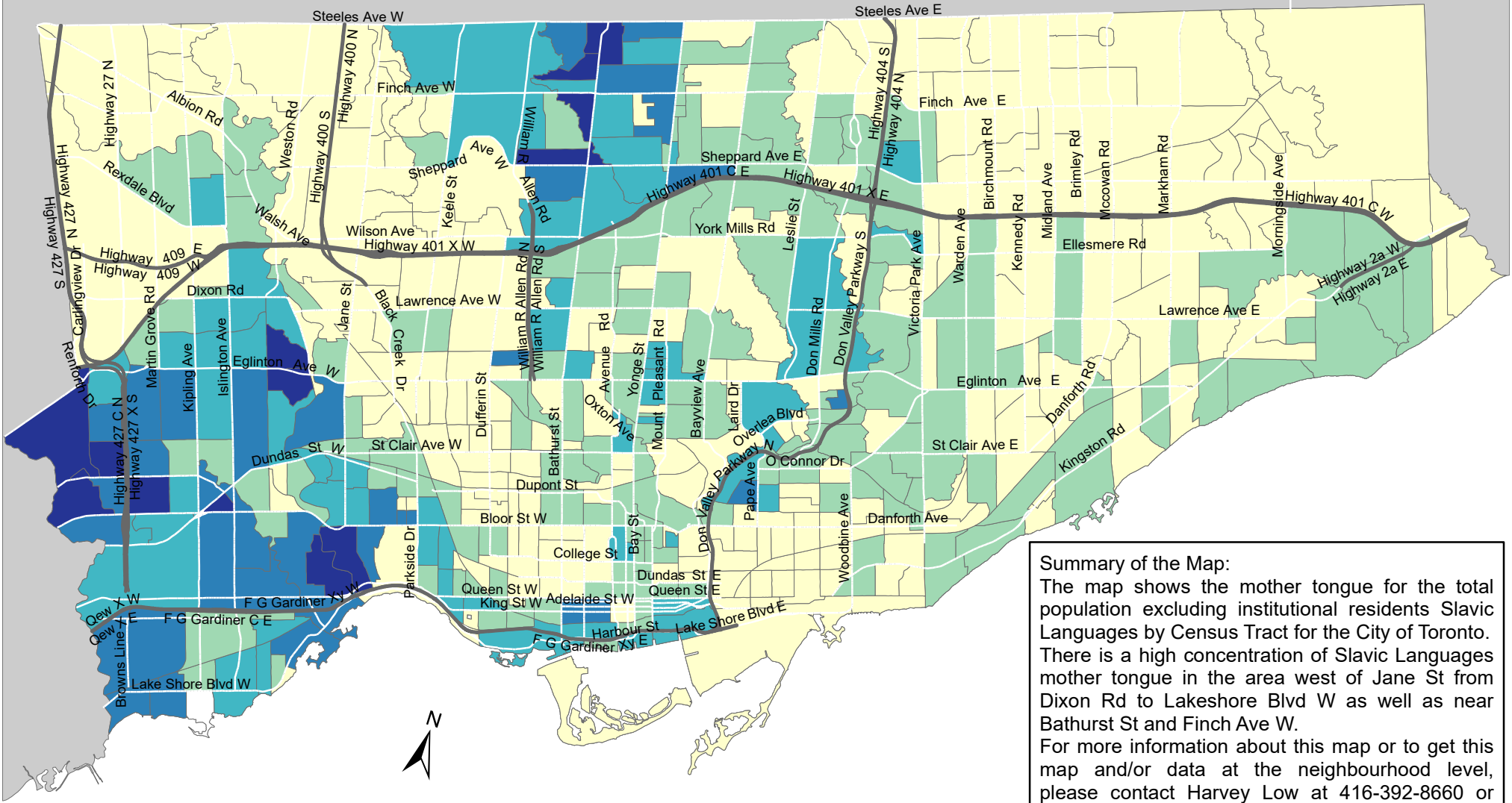
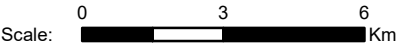


City of Toronto Mother Tongue - Slavic 2016



Summary of the Map:
 The map shows the mother tongue for the total population excluding institutional residents Slavic Languages by Census Tract for the City of Toronto. There is a high concentration of Slavic Languages mother tongue in the area west of Jane St from Dixon Rd to Lakeshore Blvd W as well as near Bathurst St and Finch Ave W. For more information about this map or to get this map and/or data at the neighbourhood level, please contact Harvey Low at 416-392-8660 or harvey.low@toronto.ca.



Mother tongue for the total population - Slavic

- 0 - 120
- 121 - 280
- 281 - 535
- 536 - 1,040
- 1,041 - 2,220

- Not available/ No data
- Expressway
- Major Arterial

Source: City of Toronto; Statistics Canada 2016 Census.
 Copyright © 2018 City of Toronto. All Rights Reserved. Published: May 2018.
 Prepared by: Social Research and Analysis Unit. Contact: spar@toronto.ca.