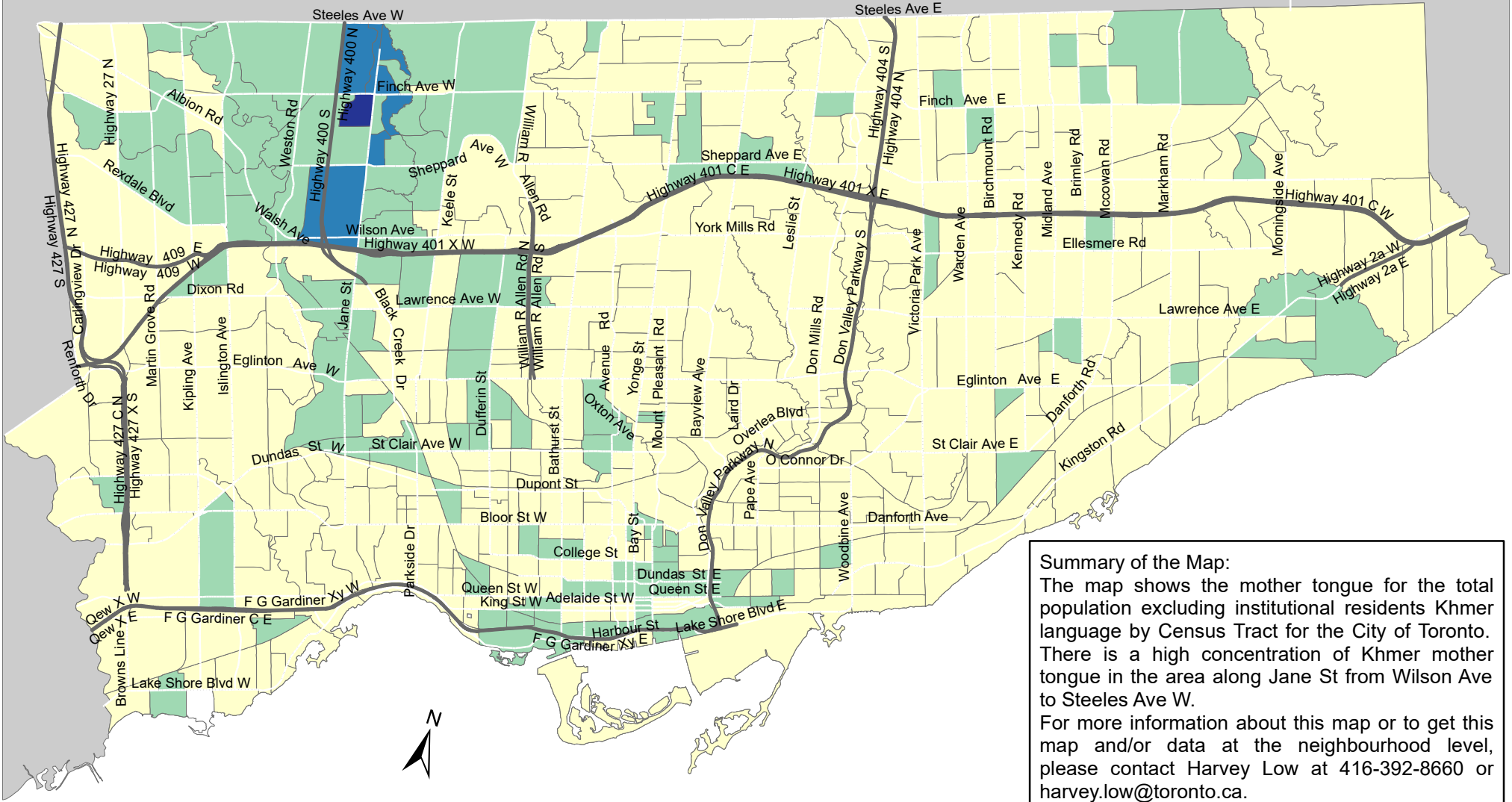


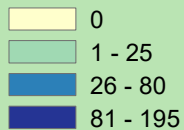
City of Toronto Mother Tongue - Khmer 2016



Scale: 0 3 6 Km

Summary of the Map:
 The map shows the mother tongue for the total population excluding institutional residents Khmer language by Census Tract for the City of Toronto. There is a high concentration of Khmer mother tongue in the area along Jane St from Wilson Ave to Steeles Ave W.
 For more information about this map or to get this map and/or data at the neighbourhood level, please contact Harvey Low at 416-392-8660 or harvey.low@toronto.ca.

Mother tongue for the total population - Khmer



- Not available/ No data
- Expressway
- Major Arterial

Source: City of Toronto;
 Statistics Canada 2016 Census.

Copyright © 2018 City of Toronto. All Rights Reserved.
 Published: May 2018.

Prepared by: Social Research and Analysis Unit.
 Contact: spar@toronto.ca.