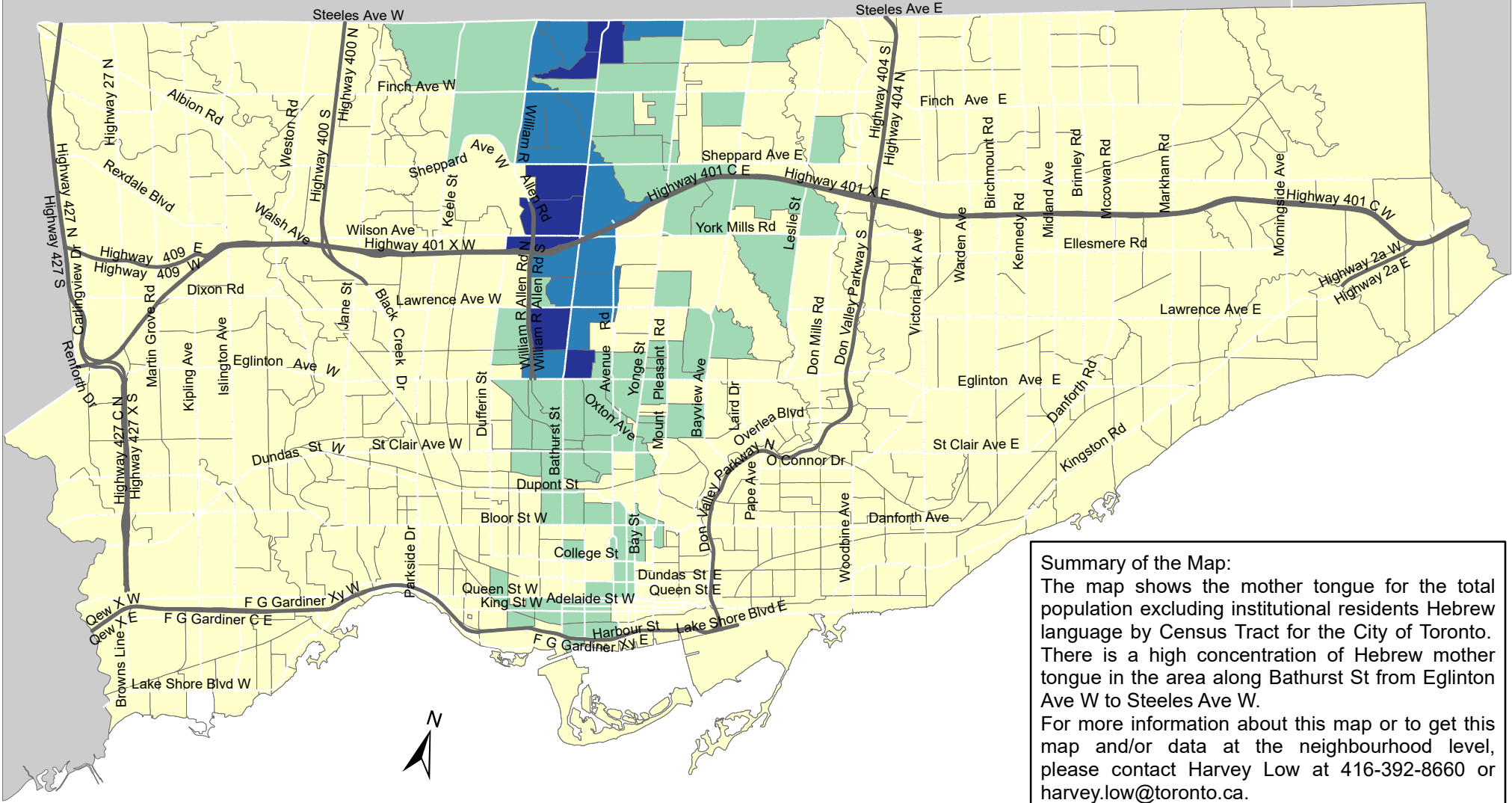


City of Toronto Mother Tongue - Hebrew 2016



Summary of the Map:
 The map shows the mother tongue for the total population excluding institutional residents Hebrew language by Census Tract for the City of Toronto. There is a high concentration of Hebrew mother tongue in the area along Bathurst St from Eglinton Ave W to Steeles Ave W. For more information about this map or to get this map and/or data at the neighbourhood level, please contact Harvey Low at 416-392-8660 or harvey.low@toronto.ca.

Mother tongue for the total population - Hebrew		Not available/ No data
0 - 10	Expressway	Major Arterial
11 - 40		
41 - 100		
101 - 200		

Source: City of Toronto; Statistics Canada 2016 Census.
 Copyright © 2018 City of Toronto. All Rights Reserved. Published: May 2018.
 Prepared by: Social Research and Analysis Unit. Contact: spar@toronto.ca.