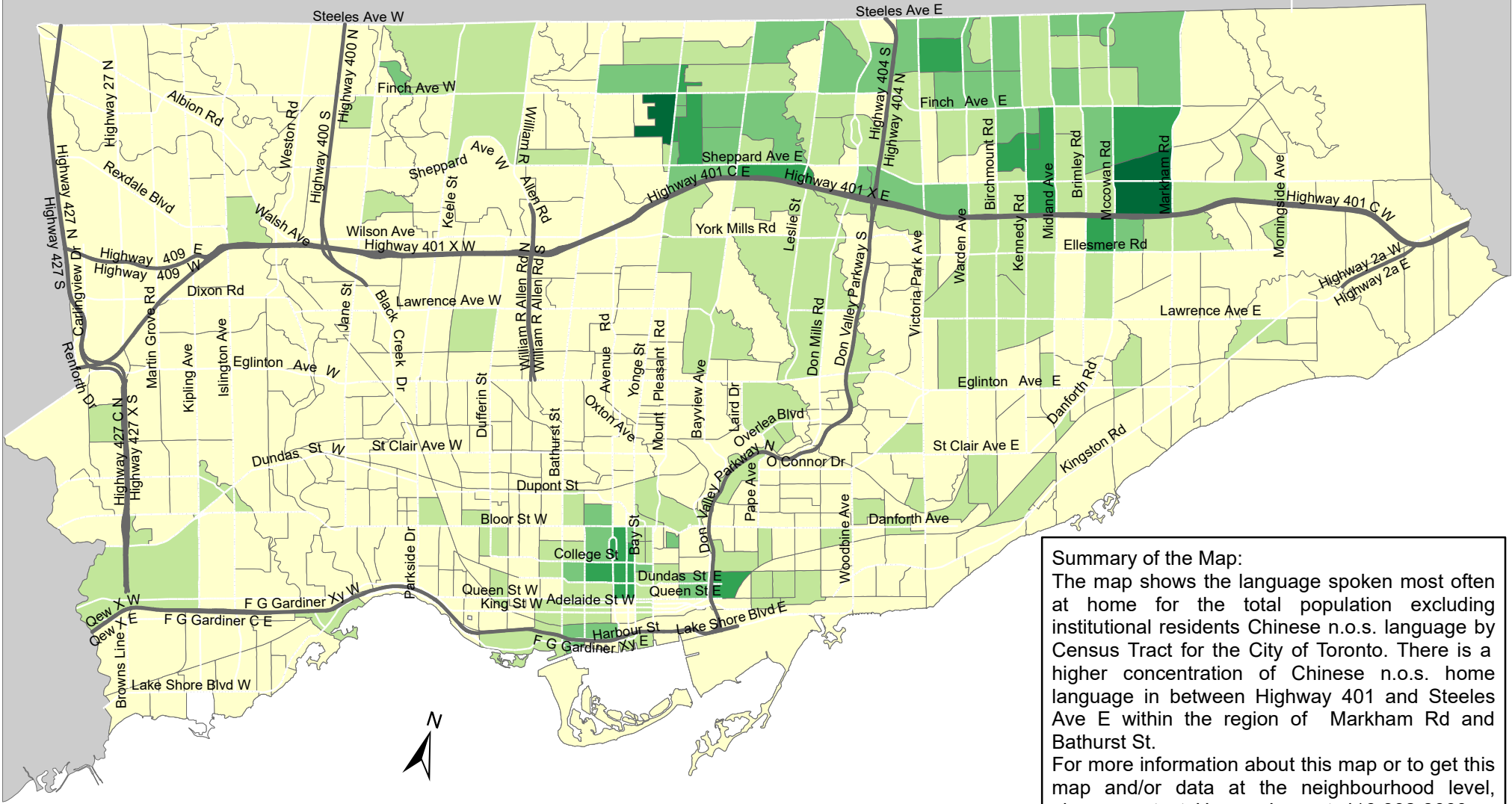
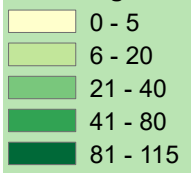


City of Toronto Home Language - Chinese, n.o.s. 2016



Summary of the Map:
 The map shows the language spoken most often at home for the total population excluding institutional residents Chinese n.o.s. language by Census Tract for the City of Toronto. There is a higher concentration of Chinese n.o.s. home language in between Highway 401 and Steeles Ave E within the region of Markham Rd and Bathurst St.
 For more information about this map or to get this map and/or data at the neighbourhood level, please contact Harvey Low at 416-392-8660 or harvey.low@toronto.ca.

Language spoken most often at home for the total population excluding institutional residents - Chinese, n.o.s.



- Not available/ No data
- Expressway
- Major Arterial

Source: City of Toronto;
 Statistics Canada 2016 Census.
 Copyright © 2018 City of Toronto. All Rights Reserved.
 Published: May 2018.
 Prepared by: Social Research and Analysis Unit.
 Contact: spar@toronto.ca.