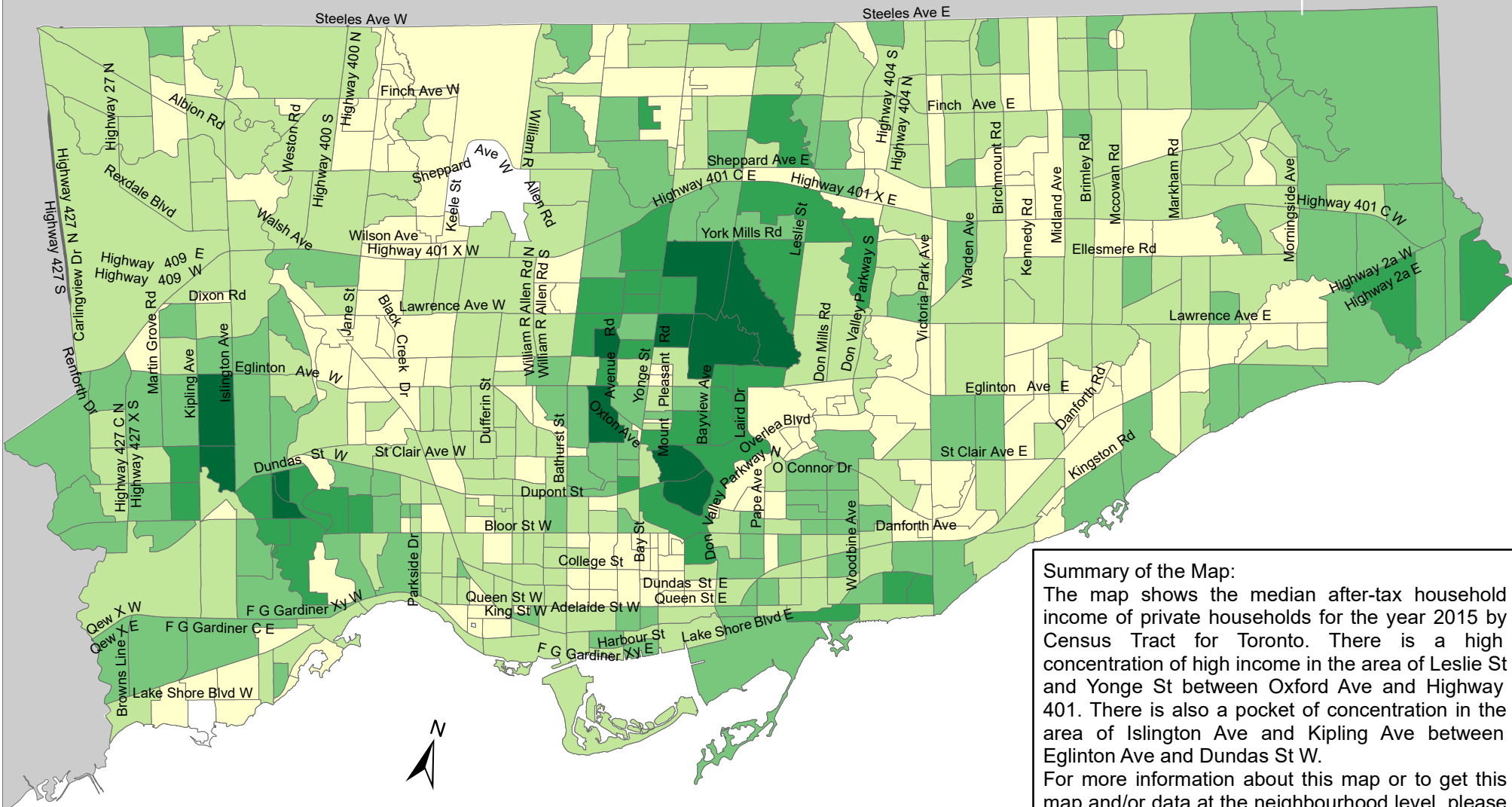
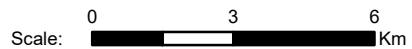


City of Toronto Income - Median After-Tax Household Income 2015



Summary of the Map:
 The map shows the median after-tax household income of private households for the year 2015 by Census Tract for Toronto. There is a high concentration of high income in the area of Leslie St and Yonge St between Oxford Ave and Highway 401. There is also a pocket of concentration in the area of Islington Ave and Kipling Ave between Eglinton Ave and Dundas St W.
 For more information about this map or to get this map and/or data at the neighbourhood level, please contact Harvey Low at 416-392-8660 or harvey.low@toronto.ca.



Median After Tax income		Not available/ No data
	\$21,941 - \$53,018	
	\$53,019 - \$70,059	
	\$70,060 - \$94,185	
	\$94,186 - \$130,816	
	\$130,817 - \$206,336	

Source: City of Toronto;
 Statistics Canada 2016 Census.
 Copyright © 2018 City of Toronto. All Rights Reserved.
 Published: May 2018.
 Prepared by: Social Research and Analysis Unit.
 Contact: spar@toronto.ca.