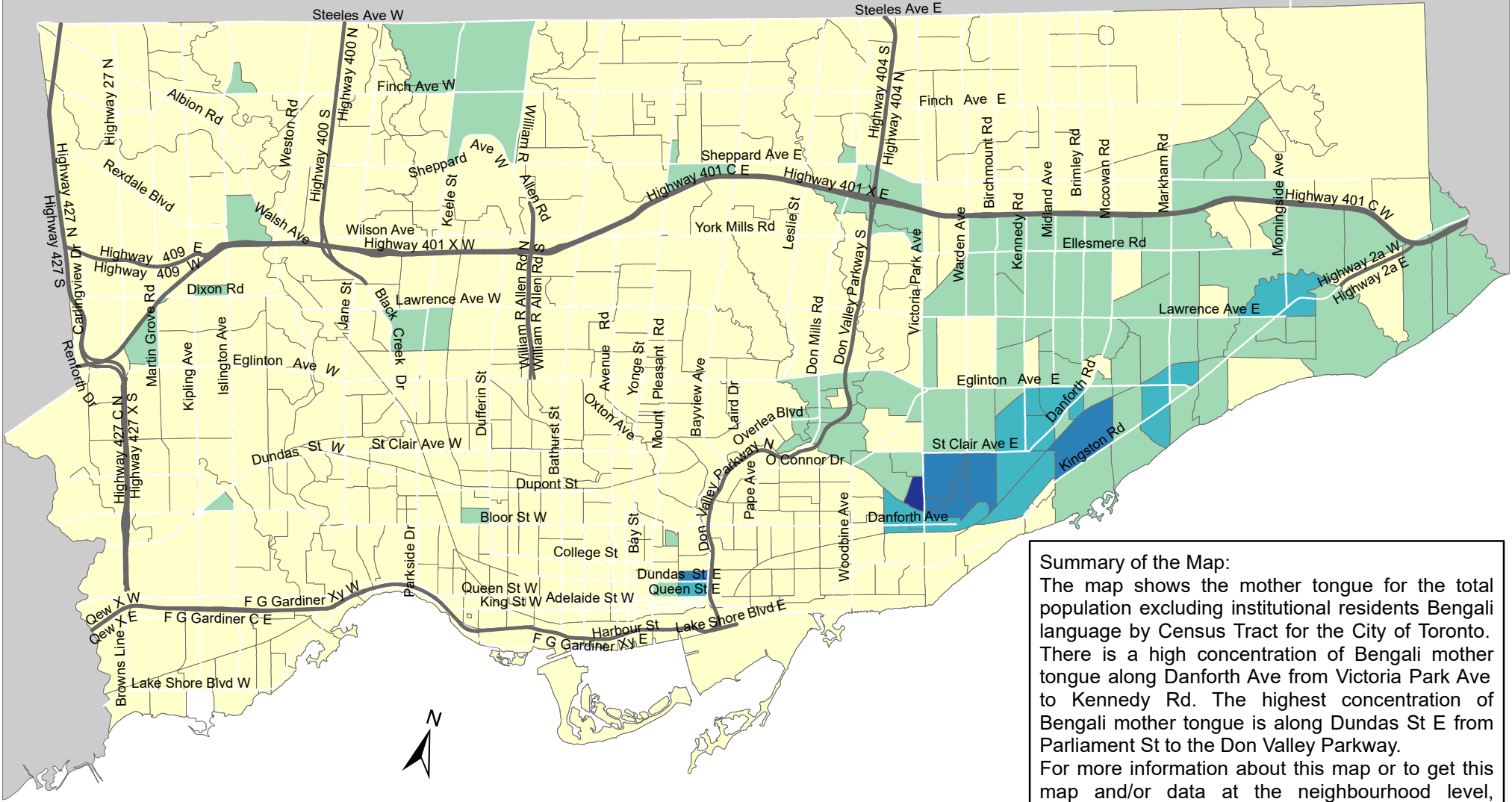
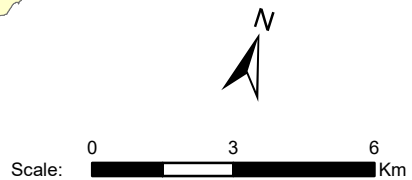


City of Toronto Mother Tongue - Bengali 2016



Summary of the Map:
 The map shows the mother tongue for the total population excluding institutional residents Bengali language by Census Tract for the City of Toronto. There is a high concentration of Bengali mother tongue along Danforth Ave from Victoria Park Ave to Kennedy Rd. The highest concentration of Bengali mother tongue is along Dundas St E from Parliament St to the Don Valley Parkway. For more information about this map or to get this map and/or data at the neighbourhood level, please contact Harvey Low at 416-392-8660 or harvey.low@toronto.ca.



Mother tongue for the total population - Bengali	Not available/ No data
0 - 60	Expressway
61 - 220	Major Arterial
221 - 565	
566 - 1,155	
1,156 - 2,360	

Source: City of Toronto;
 Statistics Canada 2016 Census.

Copyright © 2018 City of Toronto. All Rights Reserved.
 Published: May 2018.

Prepared by: Social Research and Analysis Unit.
 Contact: spar@toronto.ca.