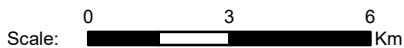
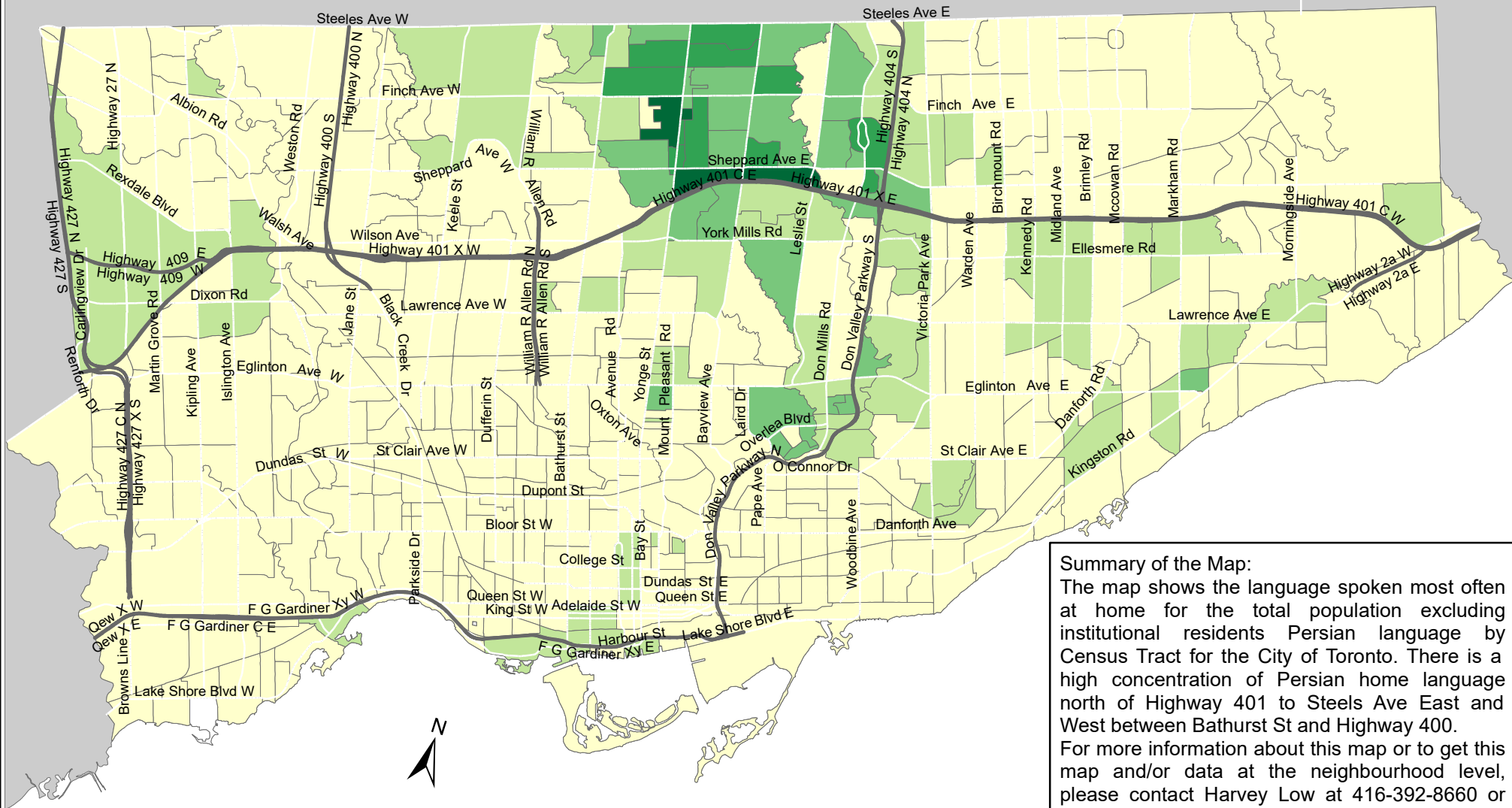


# City of Toronto Home Language - Persian (Farsi) 2016



**Summary of the Map:**  
 The map shows the language spoken most often at home for the total population excluding institutional residents Persian language by Census Tract for the City of Toronto. There is a high concentration of Persian home language north of Highway 401 to Steels Ave East and West between Bathurst St and Highway 400. For more information about this map or to get this map and/or data at the neighbourhood level, please contact Harvey Low at 416-392-8660 or [harvey.low@toronto.ca](mailto:harvey.low@toronto.ca).

## Language spoken most often at home for the total population excluding institutional residents - Persian (Farsi)

- 0 - 60
- 61 - 175
- 176 - 360
- 361 - 660
- 661 - 1,380

- Not available/ No data
- Expressway
- Major Arterial

Source: City of Toronto; Statistics Canada 2016 Census.  
 Copyright © 2018 City of Toronto. All Rights Reserved. Published: May 2018.  
 Prepared by: Social Research and Analysis Unit. Contact: [spar@toronto.ca](mailto:spar@toronto.ca).