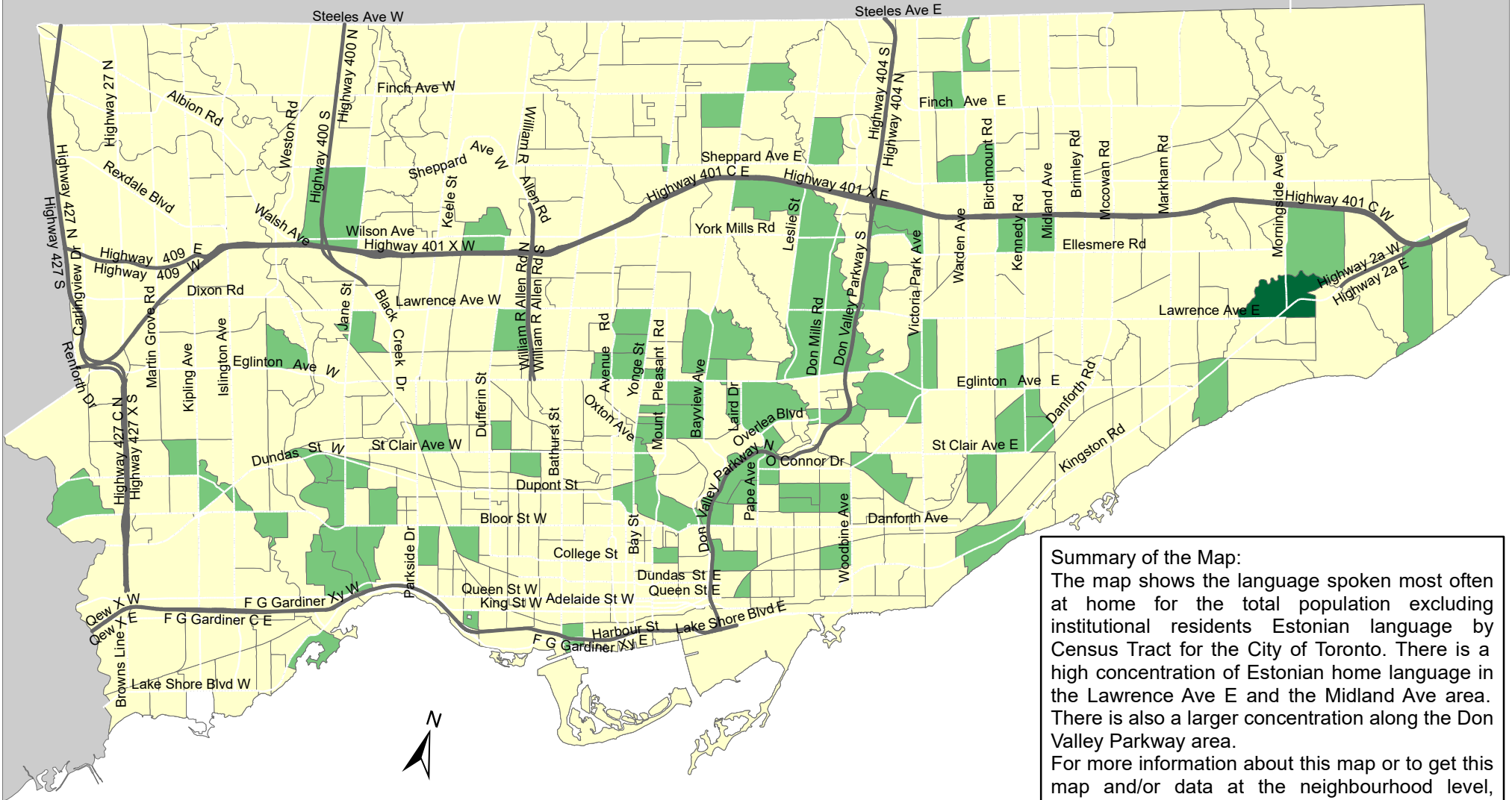


City of Toronto Home Language - Estonian 2016



Summary of the Map:
 The map shows the language spoken most often at home for the total population excluding institutional residents Estonian language by Census Tract for the City of Toronto. There is a high concentration of Estonian home language in the Lawrence Ave E and the Midland Ave area. There is also a larger concentration along the Don Valley Parkway area.
 For more information about this map or to get this map and/or data at the neighbourhood level, please contact Harvey Low at 416-392-8660 or harvey.low@toronto.ca.

Language spoken most often at home for the total population excluding institutional residents - Estonian

- 0
- 1 - 15
- 16 - 45

- Not available/ No data
- Expressway
- Major Arterial

Source: City of Toronto;
 Statistics Canada 2016 Census.

Copyright © 2018 City of Toronto. All Rights Reserved.
 Published: May 2018.

Prepared by: Social Research and Analysis Unit.
 Contact: spar@toronto.ca.