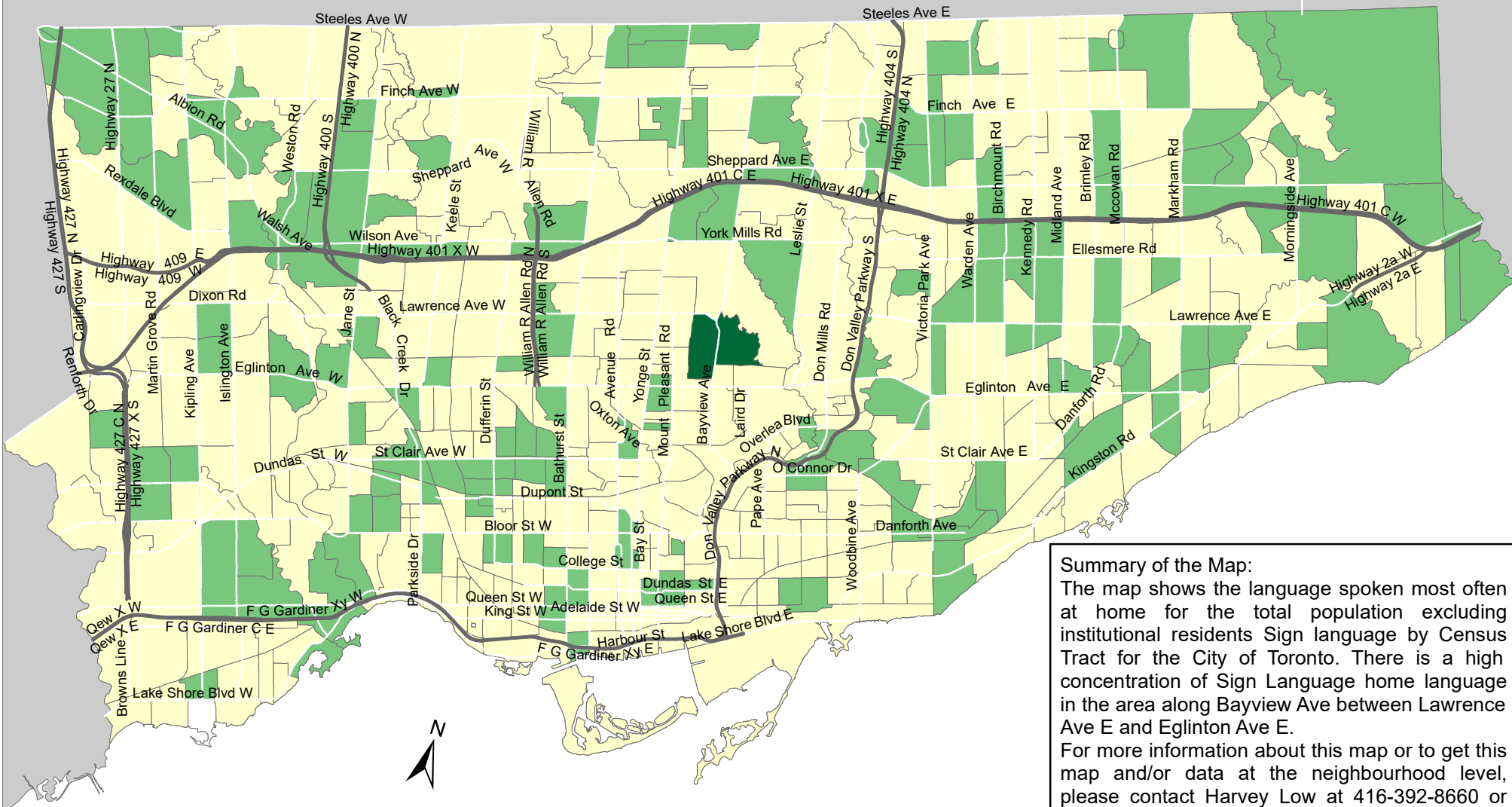
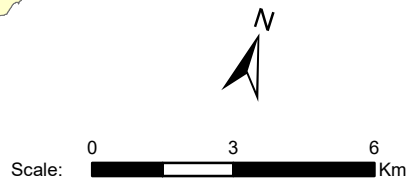


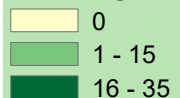
City of Toronto Home Language - Sign Language n.i.e. 2016



Summary of the Map:
 The map shows the language spoken most often at home for the total population excluding institutional residents Sign language by Census Tract for the City of Toronto. There is a high concentration of Sign Language home language in the area along Bayview Ave between Lawrence Ave E and Eglinton Ave E.
 For more information about this map or to get this map and/or data at the neighbourhood level, please contact Harvey Low at 416-392-8660 or harvey.low@toronto.ca.



Language spoken most often at home for the total population excluding institutional residents - Sign Language, n.i.e.



Not available/ No data
 Expressway
 Major Arterial

Source: City of Toronto;
 Statistics Canada 2016 Census.

 Copyright © 2018 City of Toronto. All Rights Reserved.
 Published: May 2018.

 Prepared by: Social Research and Analysis Unit.
 Contact: spar@toronto.ca.