



# Traffic Management and Mitigation Study in the Leslieville Community

Transportation Services Division & IBI Group

July 18, 2018



IBI GROUP



# Study Background and Objectives



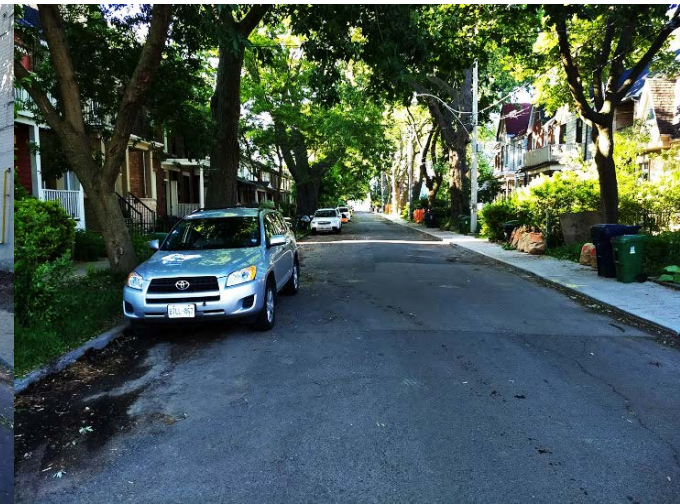
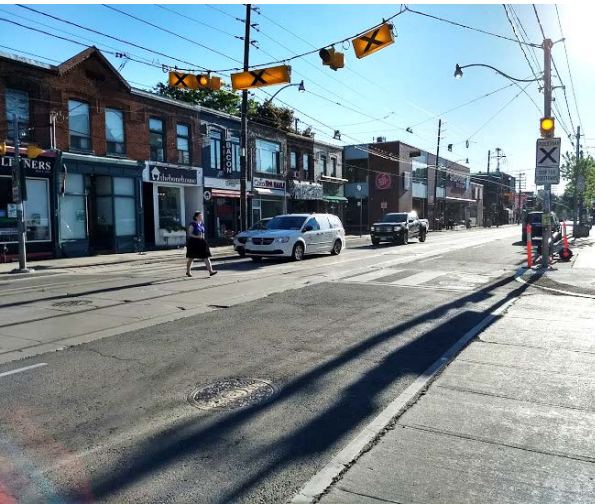
**Background** - Many development projects have been approved or proposed that may impact travel patterns and congestion. This may intensify a number of transportation issues once development has been completed

**Objective** - Identify a prioritized action plan of short and long-term projects to mitigate transportation issues



# Purpose of the Public Open House

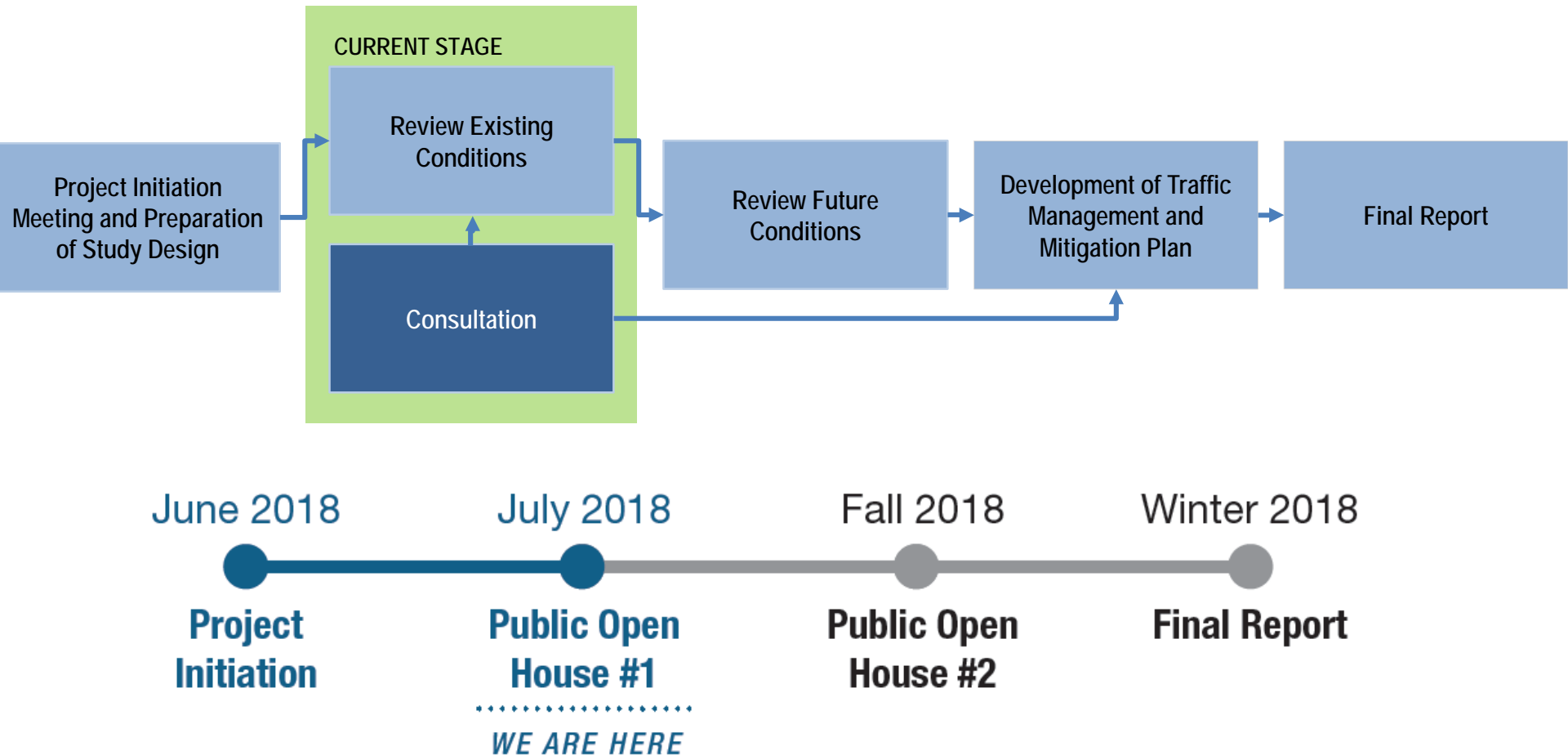
1. To introduce the Study
2. To hear your comments on the study, with a focus on:
  - Existing traffic conditions
  - Problems and opportunities



# Presentation Overview

1. Study Background and Objectives
2. Purpose of the Public Open House
3. Issues & Opportunities
4. Study Challenges
5. Overview of study tasks
6. Next Steps
7. How you can help

# Study Process Flow Chart



# Issues & Opportunities:

## School Zones – Carlaw Avenue

Heavy traffic and high speeds makes Carlaw Ave undesirable for school pick-ups / drop-offs.



Opportunities include:

1. Formalize the space in front of Morse St Public School for school activities
2. Restrict general traffic from southbound lane
3. Encourage pick-up/drop-off along Morse St
4. Reduce speed limit on Carlaw Ave to 30km/hr during school times



# Issues & Opportunities:

## Pedestrians - Crossings

Crosswalks and pedestrian signals were well used, but many pedestrians cross at unprotected crossings and at mid-block locations. Eastern Avenue is of particular concern, with large distances between protected crossing locations.



Opportunities include:

1. Reassess the locations of existing signalized intersections
2. Reassess the locations of existing pedestrian crosswalks (PXOs)
3. Replace existing PXOs with signalized intersections
4. Provide additional PXOs

# Issues & Opportunities:

## Speeding – Speeds Along Local Roads

Data suggests that more than half of vehicles travelling along the local streets within the study area are doing so faster than the posted speed limits.



Opportunities include:

1. Provide traffic calming elements along local streets, such as on-street parking, planters, bump-outs (of the curb), or other “road diet” (narrowing) features
2. Assess locations of speed limit signage
3. Consistently set speed limits with nature of street and road classification



# Study Challenges

1. Traffic congestion may be leading to neighbourhood traffic infiltration
2. Potential solutions to pedestrian and cyclist safety may result in increased congestion
3. Pedestrians want to walk along laneways, but businesses need to use these laneways for loading activities

# Existing Conditions Overview

Objective: To establish an understanding of the key issues resulting in travel congestion, traffic infiltration and pedestrian and cyclist safety concerns in the study area, including student safety.

Involves extensive data collection, traffic analysis, and then determination of the key issues resulting in traffic congestion and safety.

Data used to determine locations of highest priority and greatest opportunity for improvement.

# Future Conditions Tasks

Objective: To identify planned and proposed changes that will impact traffic operations within the study area and assess the potential impact.

Involves identifying planned and proposed changes impacting the traffic network, such as new developments or road network alterations. The future conditions will build off of the existing conditions.



# Development of Traffic Management and Mitigation Plan

Objective: To identify and evaluate a list of potential improvements and recommend a set of projects that can be implemented in the very short term (year 2018 and 2019) and long term (2020+).

Use the compiled information for the development of the traffic management and mitigation plan. Consider the duration and approvals associated with the City's planning, consultation, design, budget, and construction processes.

# Next Steps

1. Review comments received from Open House #1
2. Finalize Existing Conditions Analysis (Summer 2018)
3. Continue to work on Future Conditions Analysis, which includes estimated development traffic (Summer/Fall 2018)
4. Develop short and long term traffic management and mitigation strategies (Summer/Fall 2018)
5. Present strategies to the public at Open House #2 (Fall/Winter 2018)
6. Complete project by Winter 2018

# How You Can Help

1. Complete a comment sheet and place it in the box provided
2. Email or mail your comment sheet to the addresses provided, by August 1, 2018
3. Participate in the stations at this Open House
4. Speak with the Project Team



[www.toronto.ca/leslievilletrafficstudy](http://www.toronto.ca/leslievilletrafficstudy)



QUESTIONS?