

PARK LAWN LAKE SHORE

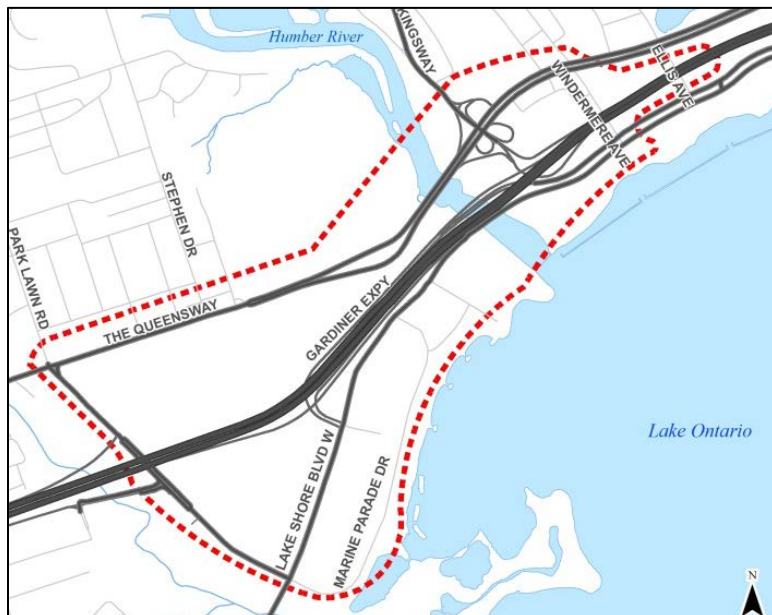


TRANSPORTATION MASTER PLAN

The City of Toronto continues work on the Park Lawn Lake Shore Transportation Master Plan (TMP) Study (initiated in 2016) to identify transportation improvements that support all road users and the further development of the Park Lawn / Lake Shore community.

What solutions are being studied?

- ✓ New connections and better access to roads, transit, and pathways
- ✓ Additional safe and convenient crossings of physical barriers
- ✓ Planning for public transit, pedestrian, and cycling facilities
- ✓ High quality streetscape design



Map of study area

Following the project launch (September 2016) and community workshops (November/December 2016), the project team has continued to study existing and future traffic conditions. The TMP will resume in early 2019 at which point the 2nd public event will be held to discuss alternative solutions and collect feedback.

NEARBY INFRASTRUCTURE UPDATES

New bus route to Mimico GO Station

Following feedback received through public consultation on the Park Lawn Lake Shore TMP, on June 25, 2018 TTC announced the new 176 Mimico GO route to connect transit users in south Etobicoke to the Mimico GO station. This one-way bus route serves TTC bus stops between the Park Lawn Loop and Mimico GO Station every 30 minutes, and meets GO train trips during peak periods.

Visit ttc.ca to learn more about this new route.

Park Lawn GO Station a City Priority

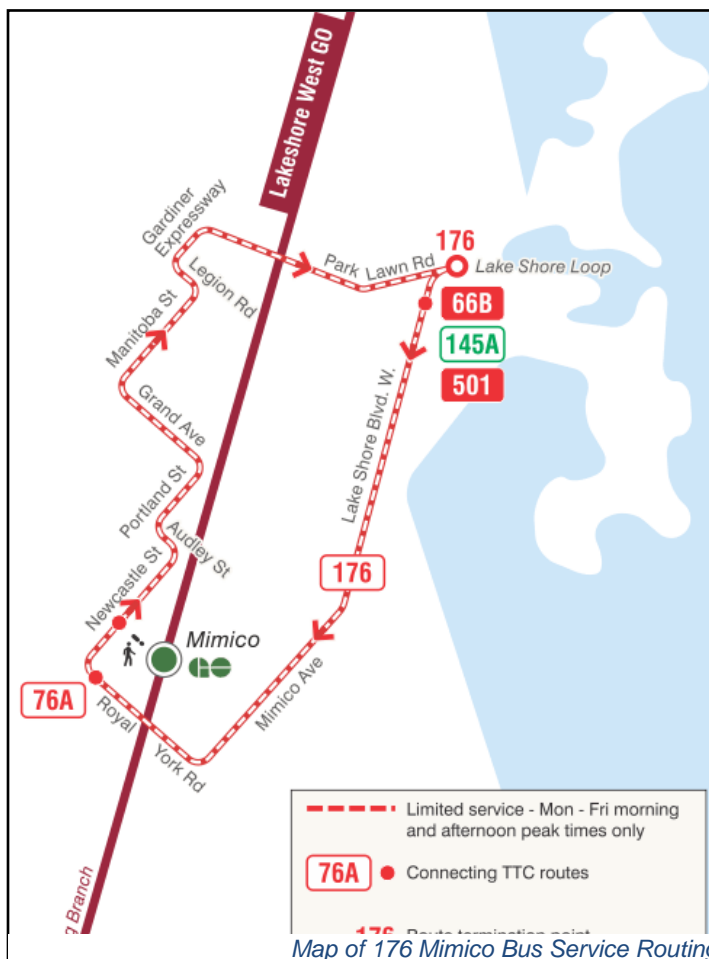
At its meeting on November 7, 2017, City Council adopted a motion to advise Metrolinx that a new Park Lawn GO Station is a priority for the City. City and Metrolinx staff are considering the feasibility of a Park Lawn GO Station on the Lakeshore West GO Corridor to coincide with and support potential future development in the vicinity. City staff were requested to report back to Council to identify potential contributions for a new station from private partners.

For more information contact:
Richard.Beck@Toronto.ca 416-394-8235

Mimico GO Station Upgrades

Metrolinx's GO Expansion program is delivering more GO service across the network, including trains every 15 minutes or better on the Lakeshore West line. To help support this work, Metrolinx is upgrading their rail network to enable electrified and fully accessible service, including Toronto's Mimico GO Station with:

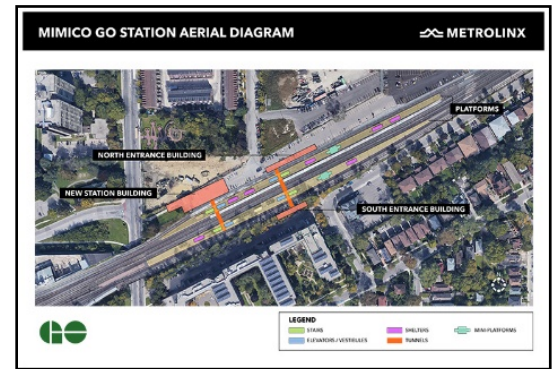
- a new station building
- two new east and west tunnels with elevator and stair access to platform level



Map of 176 Mimico Bus Service Routing

- accessible north and south entrance buildings with a new passenger pick-up & drop-off area on Manchester Street
- rehabilitation of existing platforms, including snow melting systems, heated shelters, elevators, stairs and integrated platform canopies
- revisions to existing parking lot, including passenger drop-off and pick-up area, bike lanes, pedestrian walkways and bike shelters
- provisions for electrification

For more information visit: metrolinx.com/mimico,
Mimico@metrolinx.com

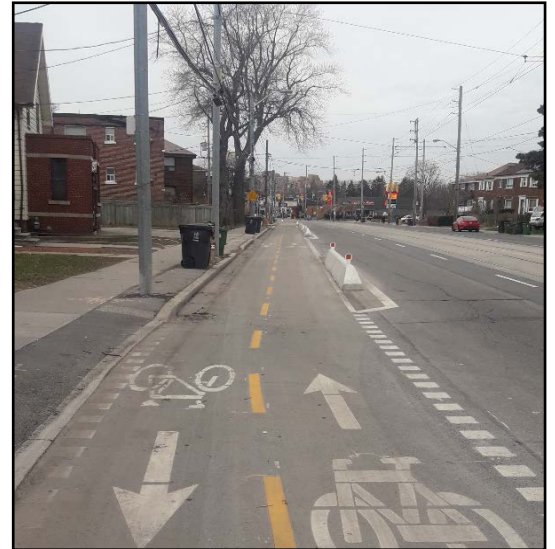


Lake Shore Cycle Track

The City of Toronto has installed a 1.4km bi-directional cycle track along Lake Shore Boulevard West from Norris Crescent to First Street. The cycle track provides a safe connection for cyclists and closes a gap in the Waterfront Trail. Key features include;

- a variety of barriers to separate the cycle track from vehicle lanes with gaps provided for access to commercial and residential driveways
- ramped platforms at three TTC stops to facilitate safe boarding and unboarding of passengers
- parking is still available on the north side of Lake Shore Blvd, no lanes of traffic were removed

For more information on this project visit: toronto.ca/lakeshorecycle



Background: Park Lawn Lake Shore Transportation Master Plan (TMP)

Over the past 20 years population and development in the Park Lawn Road and Lake Shore Boulevard West area has grown significantly, resulting in increased traffic congestion and limited options to connect to surrounding areas. During this time, the area's transportation network has remained relatively unchanged, and improvements are needed to meet the needs of pedestrians, cyclists, transit users, vehicles, and development both now and in the future.

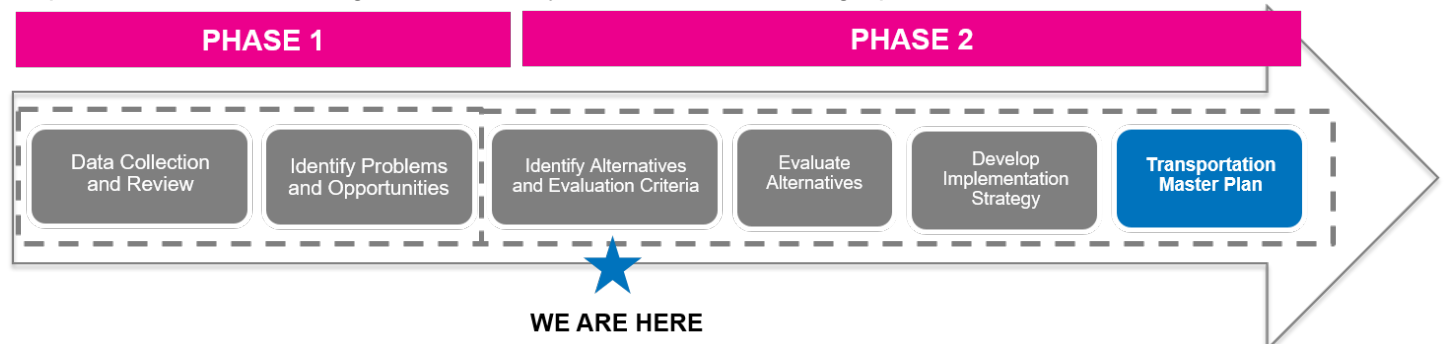
To keep this community moving, the Park Lawn / Lake Shore Area TMP Study is a critical first step in a multi-year process towards long-term transportation improvements. The TMP will build upon past studies, moving towards much needed upgrades to existing infrastructure and recommendation for new infrastructure.

What is a TMP Study?

A TMP examines infrastructure needs within a geographic area, recommends improvements, and provides a framework for the implementation of those recommended improvements over a period of time. The Park Lawn / Lake Shore Area TMP Study will follow Phases 1 and 2 under the Municipal Class Environmental Assessment (EA) process, which is an approved process under the Environmental Assessment Act:

- Phase 1: Identify the transportation problems and opportunities
- Phase 2: Develop, evaluate and recommend alternatives to address the identified problems and opportunities.

The Ontario EA Act regulates the planning and decision-making process so that potential environmental effects are considered before infrastructure construction projects begin. Once complete, the TMP will recommend a series of transportation projects, initiatives and policies to support the Park Lawn / Lake Shore Area. Some recommended projects will require completion of additional phases in the EA process, including opportunities for public consultation. Stages of the Study are described in the graphic below:



www.toronto.ca/parklawnlakeshore

Park Lawn Lake Shore Transportation Master Plan Contact:

Robyn Shyllit
Senior Public Consultation Coordinator, City of Toronto
Metro Hall, 19th Floor, 55 John Street
Toronto, ON M5V 3C6

E-mail: Robyn.Shyllit@Toronto.ca
Tel: 416-392-3358
Fax: 416-392-2974
TTY: 416-338-0889