

# UNILEVER PRECINCT PLANNING STUDY

## Community Consultation Meeting Mobility & Unilever Precinct

November 21, 2017








METROLINX



TORONTO



# Agenda

-  7:00 Welcome & Context  
Karla Kolli, Dillon Consulting Ltd.  
Councillor Paula Fletcher  
Carly Bowman, Community Planning
-  7:15 Panel Discussion  
Renee Gomes, Director of Development, First Gulf  
Stella Gustavson, Program Manager, Transit Implementation  
Nigel Tahair, Program Manager, Transportation Planning  
James Perttula, Director, Transit & Transportation Planning
-  7:40 Questions of Panel
-  8:10 Workshop
-  8:55 Next Steps and Close



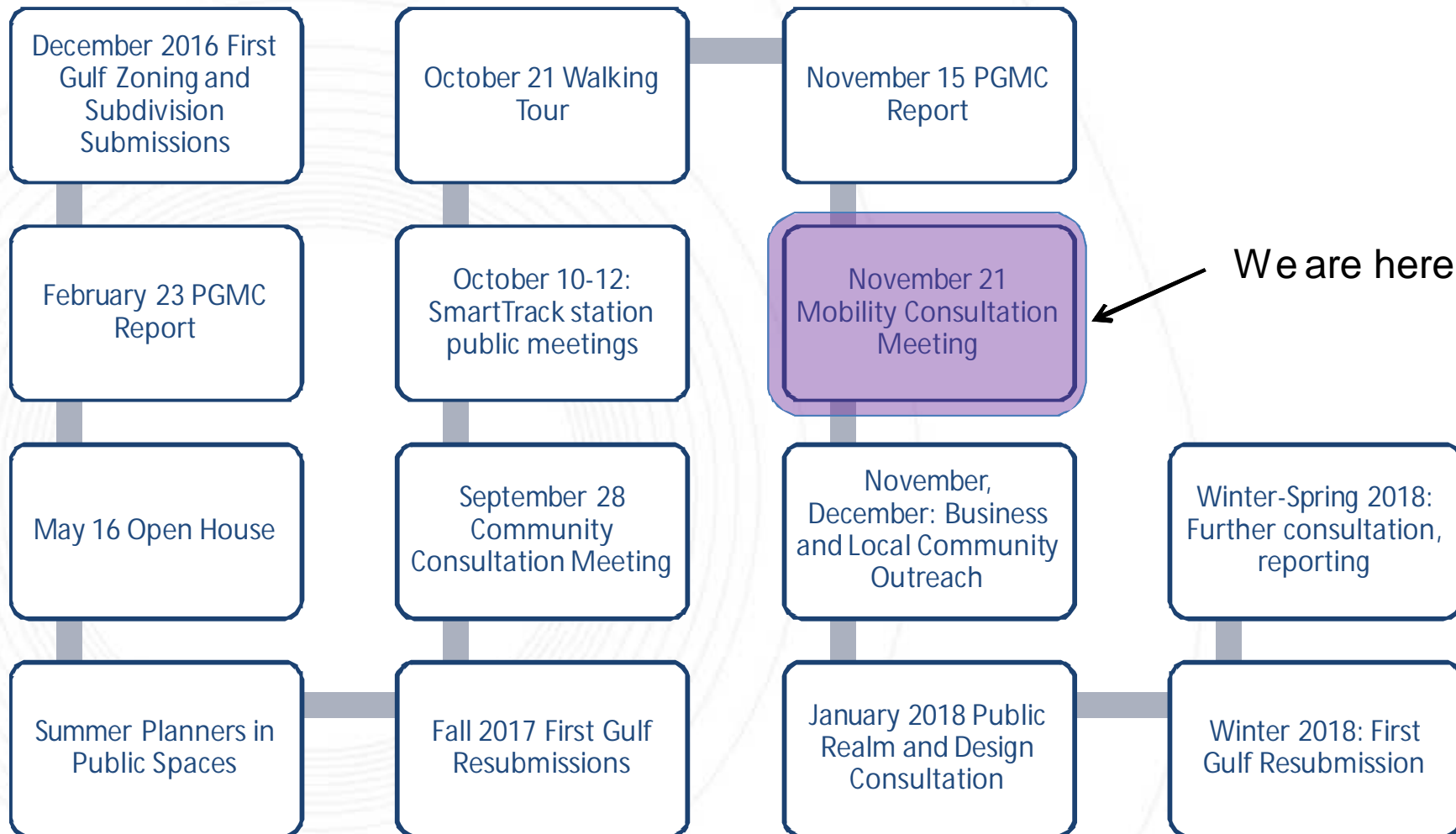
# Conduct

- § Everyone will have a chance to speak
- § Raise your hand to ask a question or make a comment at the end of the presentation
- § Be respectful - everyone deserves to be heard

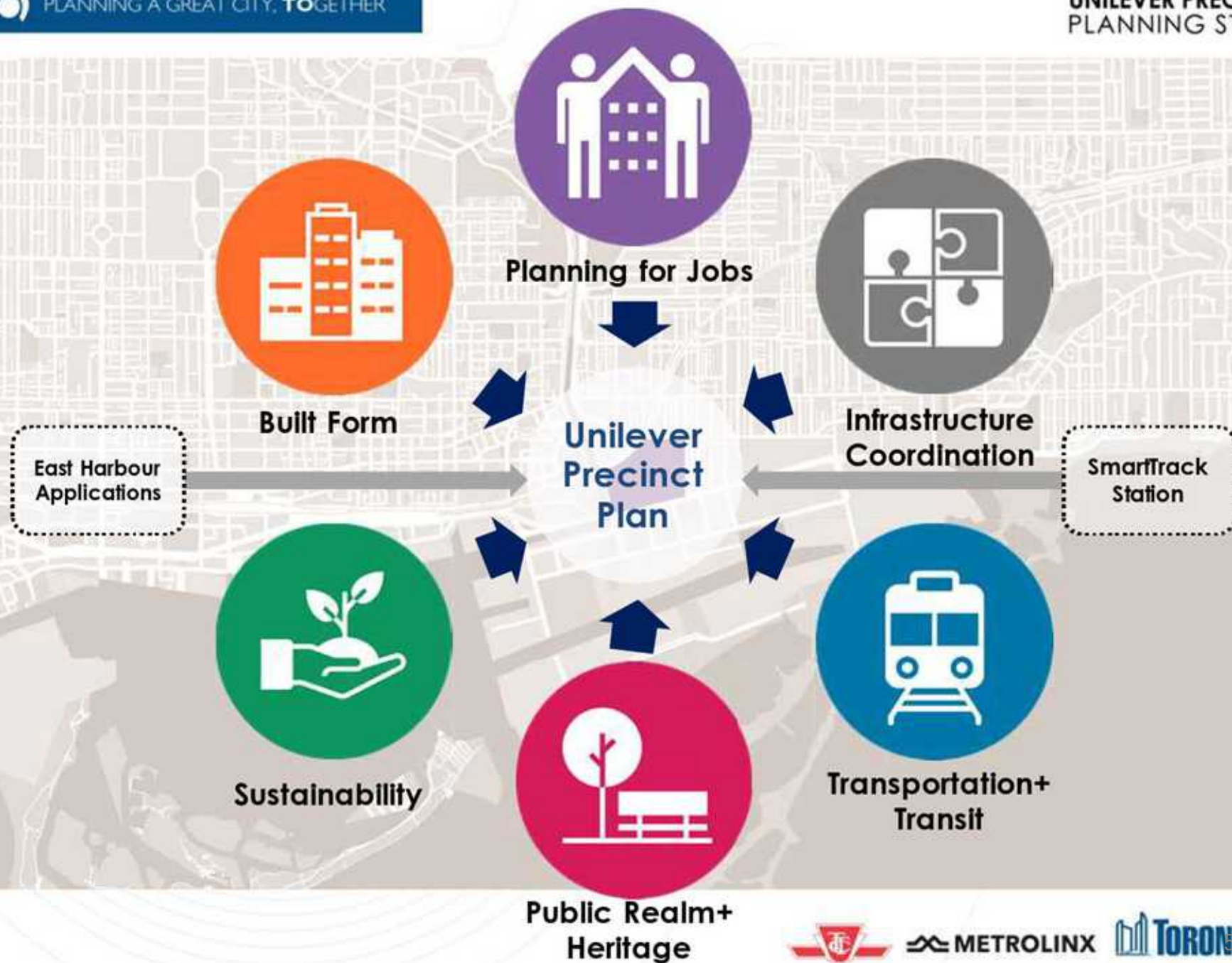




# An ongoing conversation









# What we've heard: Priorities



Attract the community 24/7,  
through programming,  
amenities and uses

High quality, diverse and  
resilient green spaces

Include art  
and culture in  
the Precinct

Reflect the  
rich history of  
the Precinct



Enhanced, safe pedestrian and cycling  
connections are critical



Plan for diverse  
employment uses

Affordable  
employment  
spaces



High-quality  
architecture  
in a range  
of building  
forms

Varied and  
interesting  
retail  
streetscape



Aim for net-  
zero carbon  
footprint



Planning for Jobs



Infrastructure  
Coordination



Transportation+  
Transit



Public Realm+  
Heritage



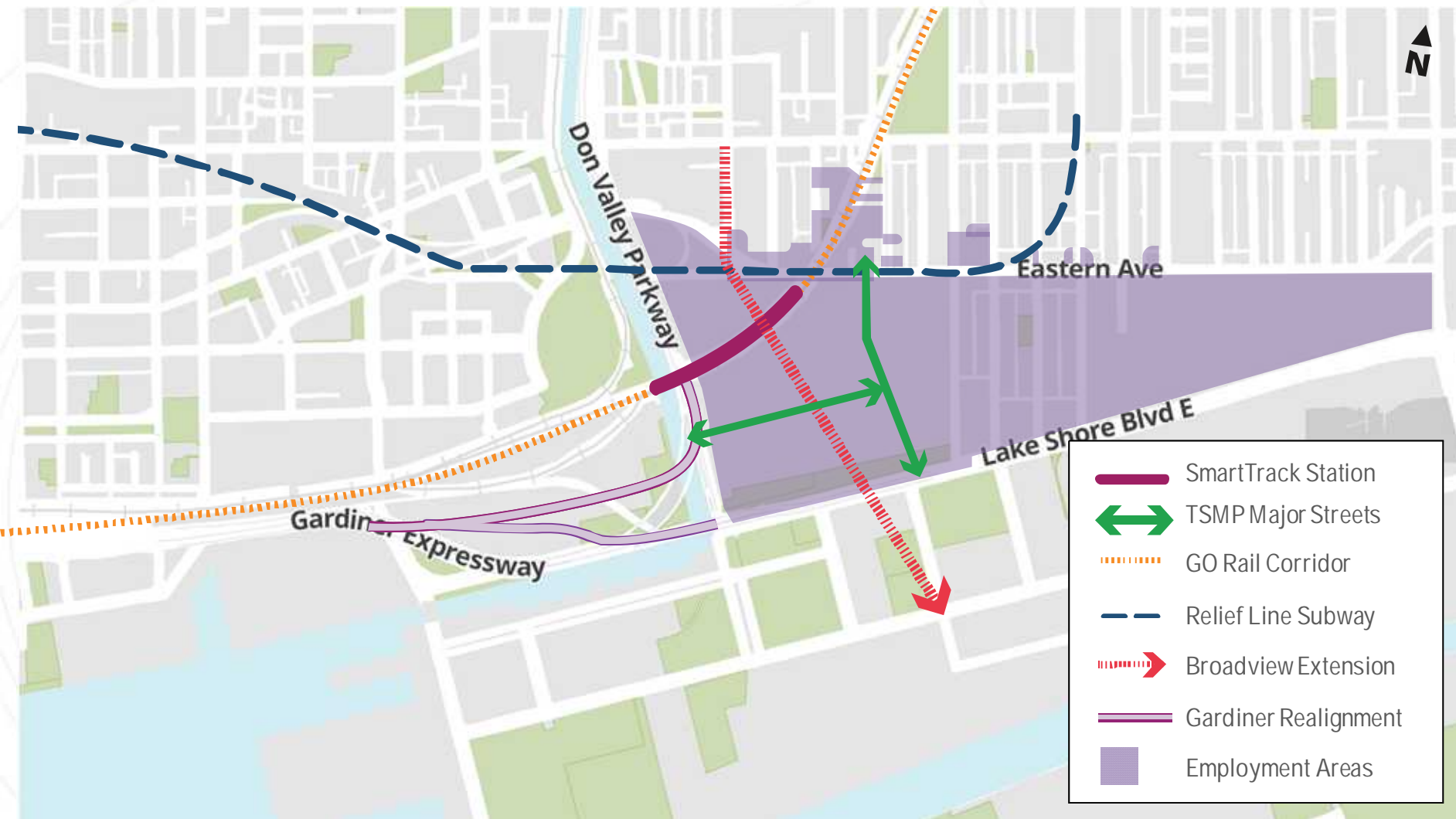
Sustainability



Built Form



# What We Know







# Our Panel







# Our Panel

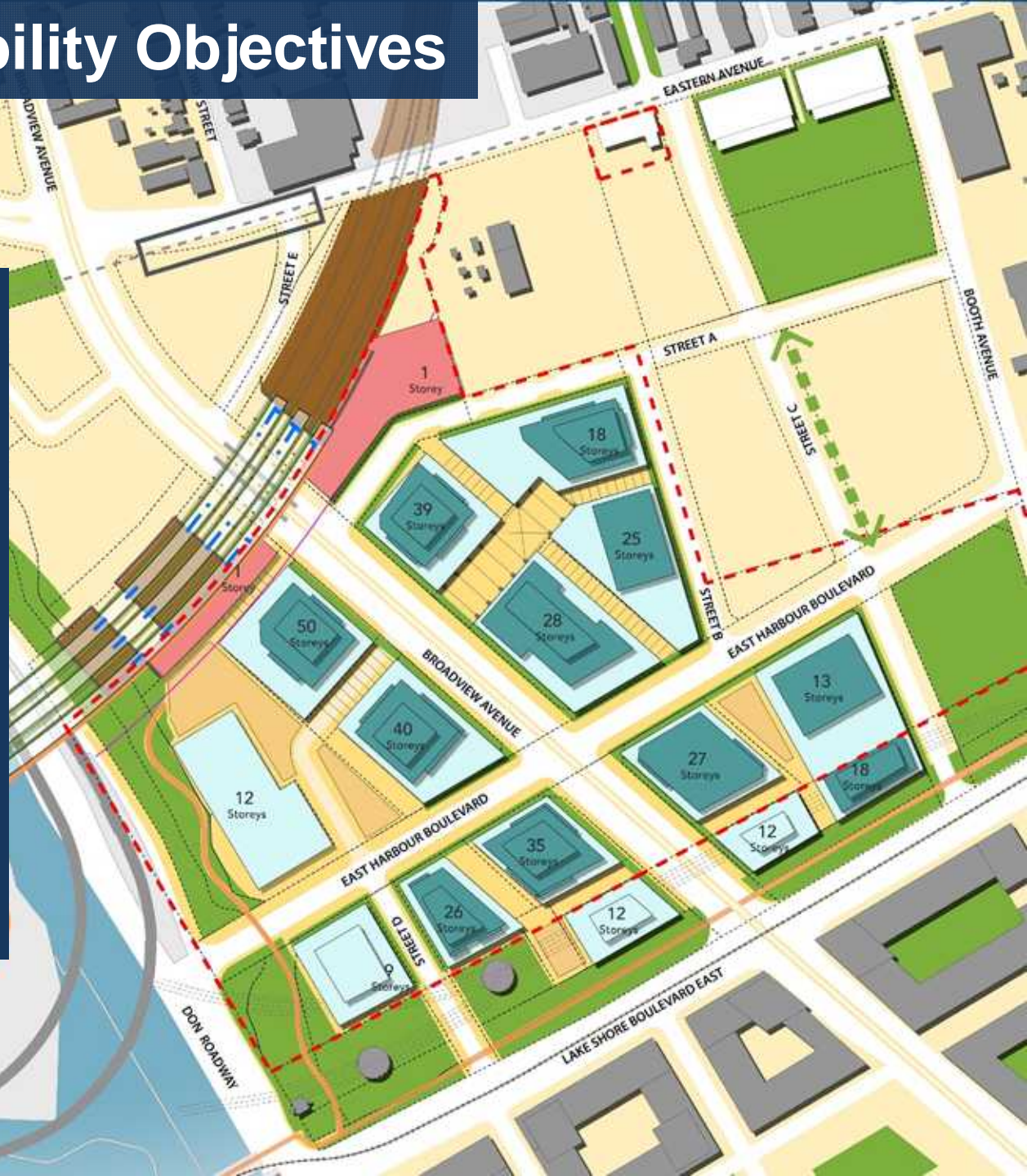
- Renee Gomes, Director of Development, First Gulf
- Stella Gustavson, Program Manager, Transit Implementation Unit, Transportation Planning
- Nigel Tahair, Program Manager, Toronto & East York District, Transportation Planning
- James Perttula, Director, Transit and Transportation Planning, City Planning



# East Harbour Mobility Objectives

The Master Plan is based on an integrated approach to sustainable urban development which:

- Enhances mobility
- Promotes active transportation and transit
- Reduces dependence on private vehicles





# 1) Establishing a vibrant commercial district with a diverse and integrated mix of uses



**9.96 million sf**  
employment space on the  
First Gulf lands



**Over 50,000**  
jobs



**1.7 million sf**  
retail, culture, recreation  
and entertainment



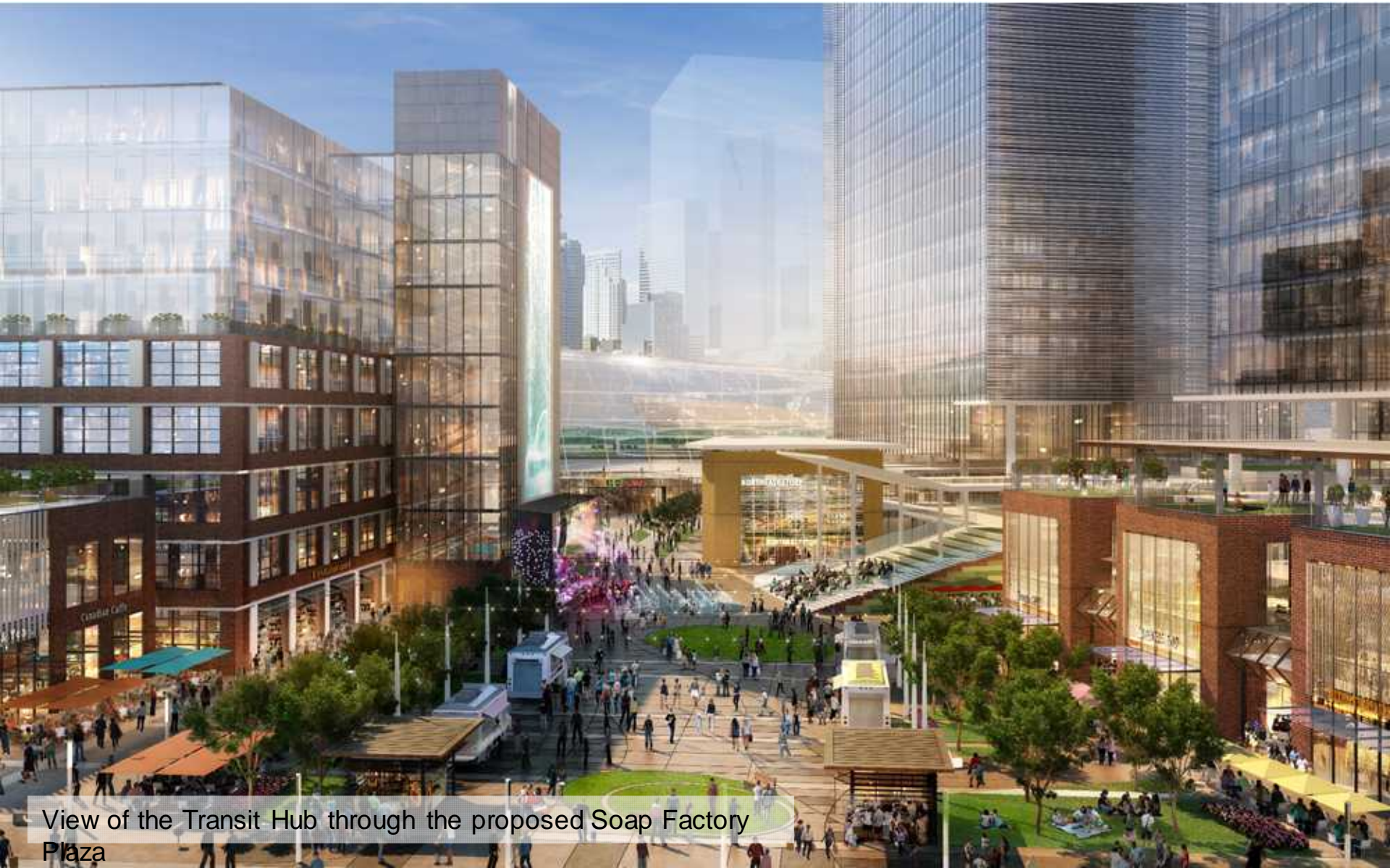
**5**  
major transit lines



**Approximately**  
**8.5 acres**  
of open space on the  
First Gulf lands



# 1) Establishing a vibrant commercial district with a diverse and integrated mix of uses



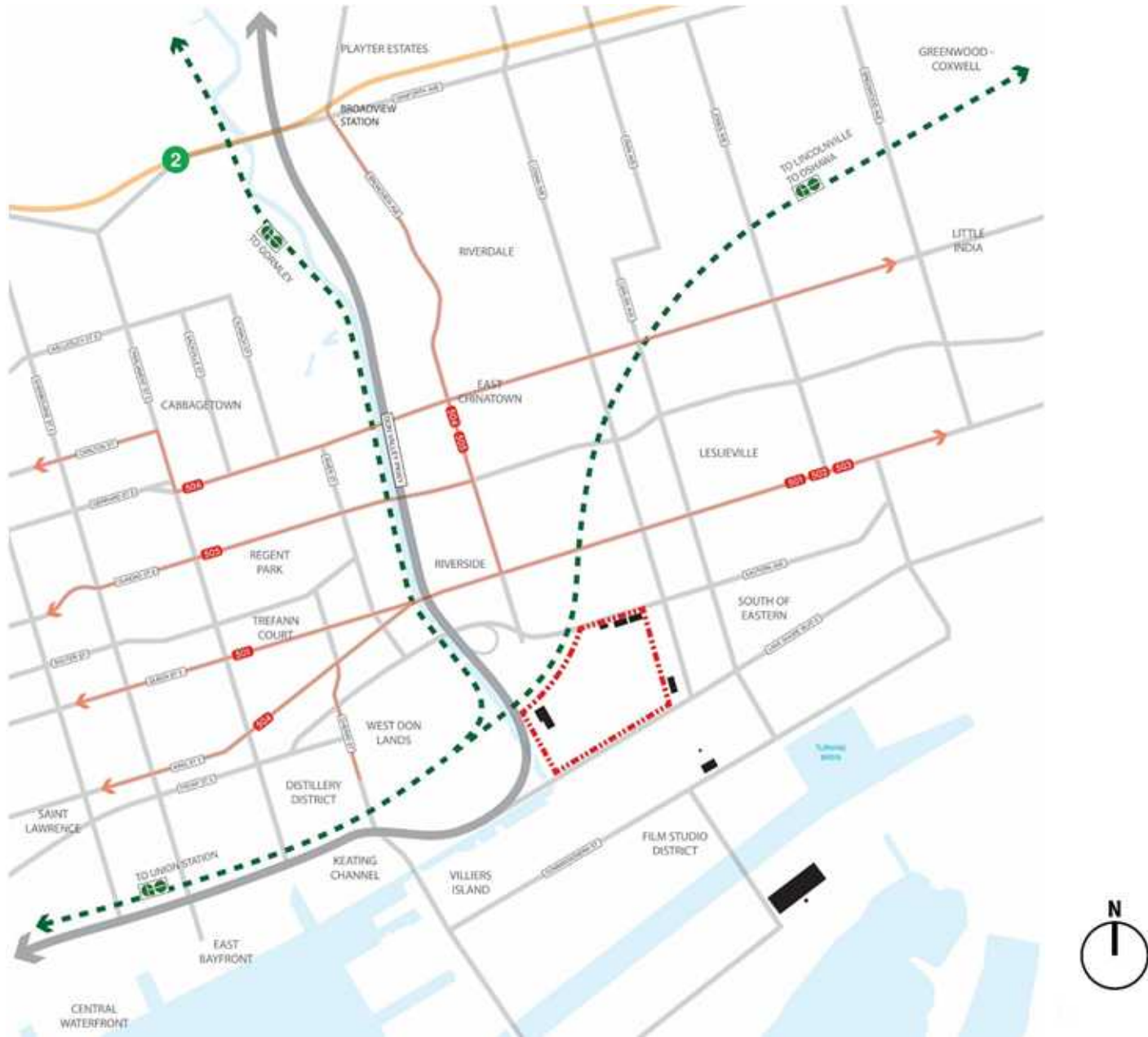
View of the Transit Hub through the proposed Soap Factory Plaza

## 2) Transit First: Focusing on TOD from the beginning



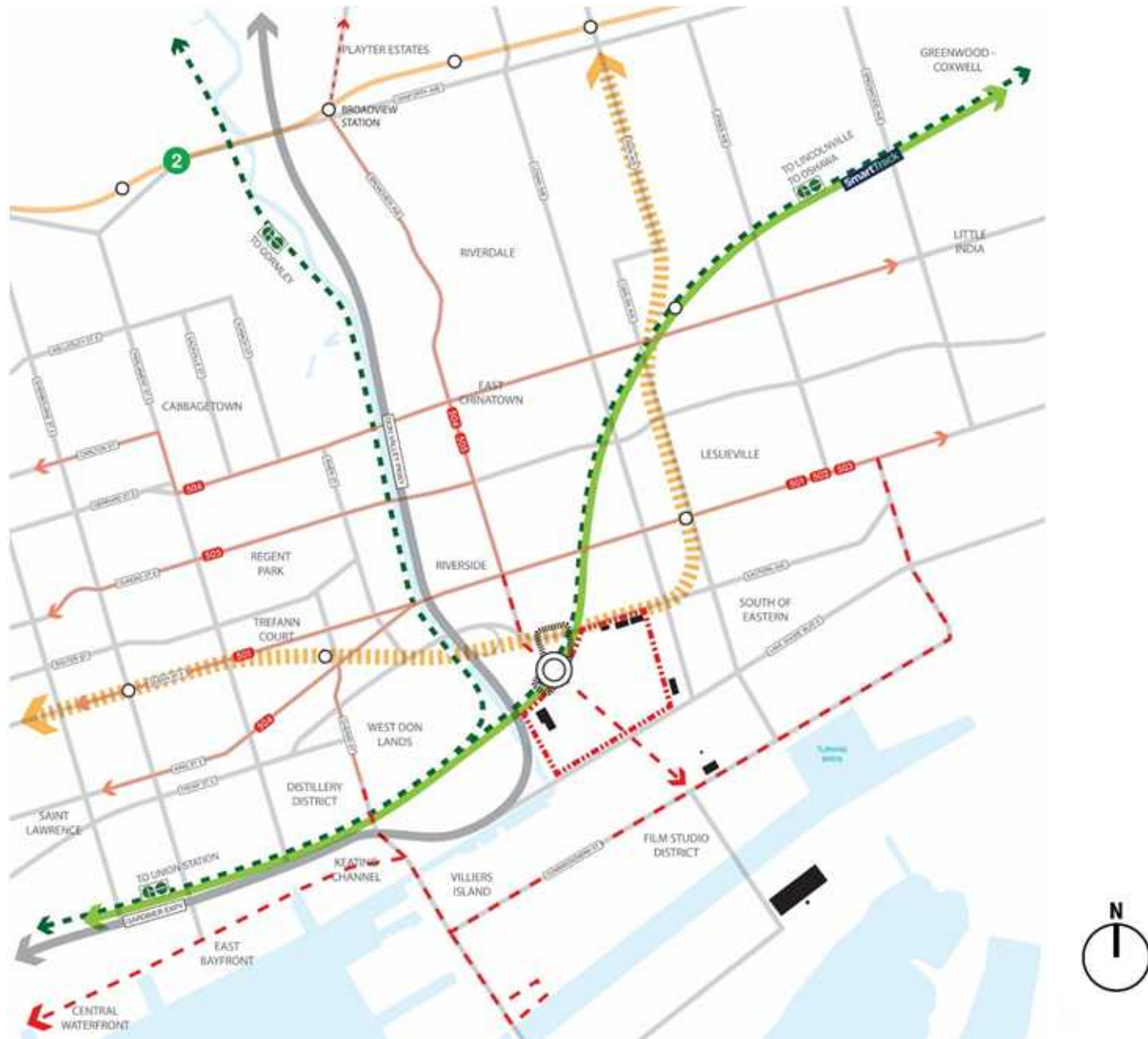


## 2) Transit First: Focusing on TOD from the beginning





## 2) Transit First: Focusing on TOD from the beginning

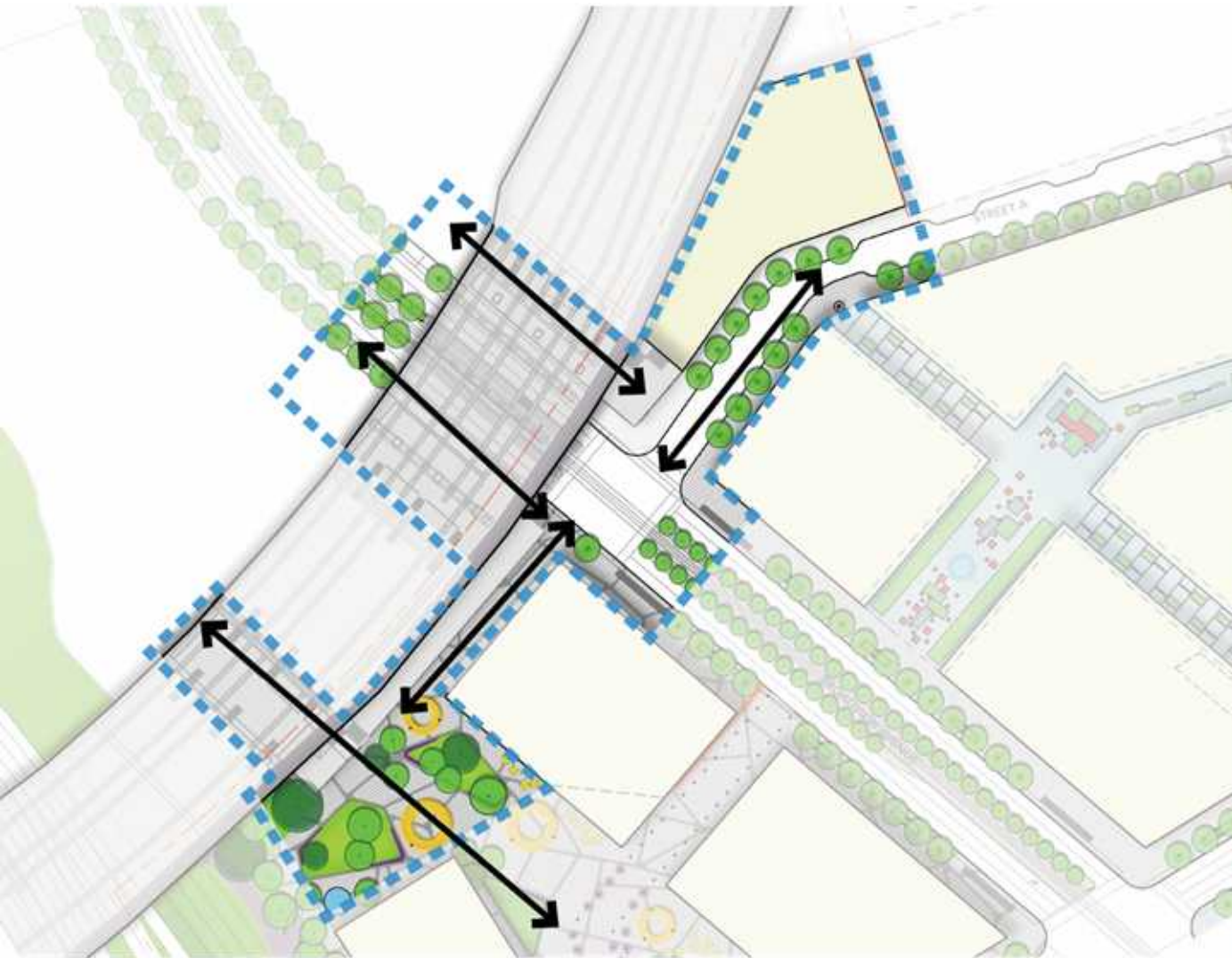


## 2) Transit First: Focusing on TOD from the beginning





## 2) Transit First: Focusing on TOD from the beginning



East Harbour Transit Plaza



### 3) A comprehensive approach to mobility planning



### 3) A comprehensive approach to mobility planning





### 3) A comprehensive approach to mobility planning





### 3) A comprehensive approach to mobility planning



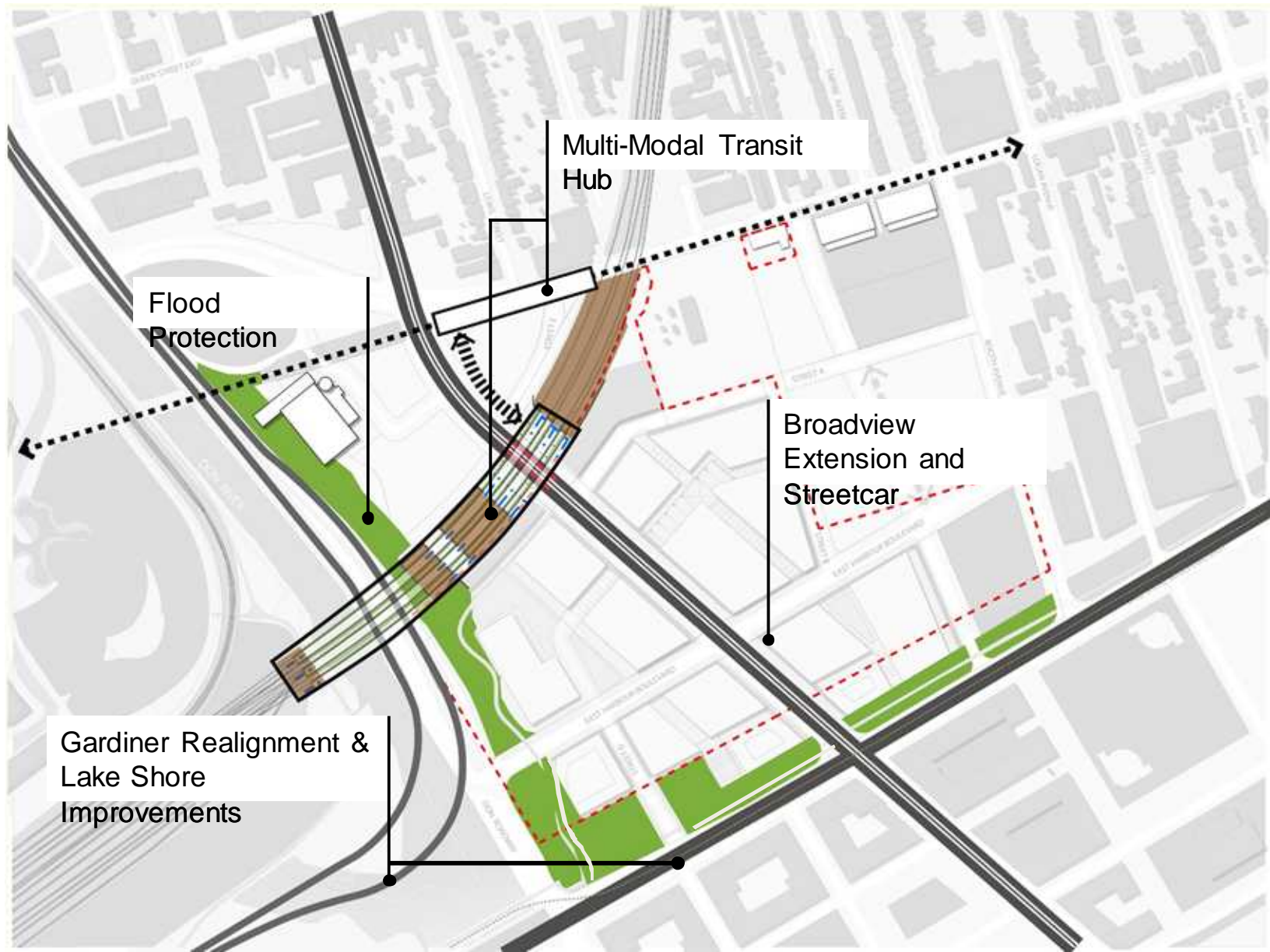


## 4) Delivering complete streets





## 5) Continued coordination and integration with planned infrastructure investments and area-wide planning initiatives





## 5) Continued coordination and integration with planned infrastructure investments and area-wide planning initiatives



# New SmartTrack and GO Stations in Toronto

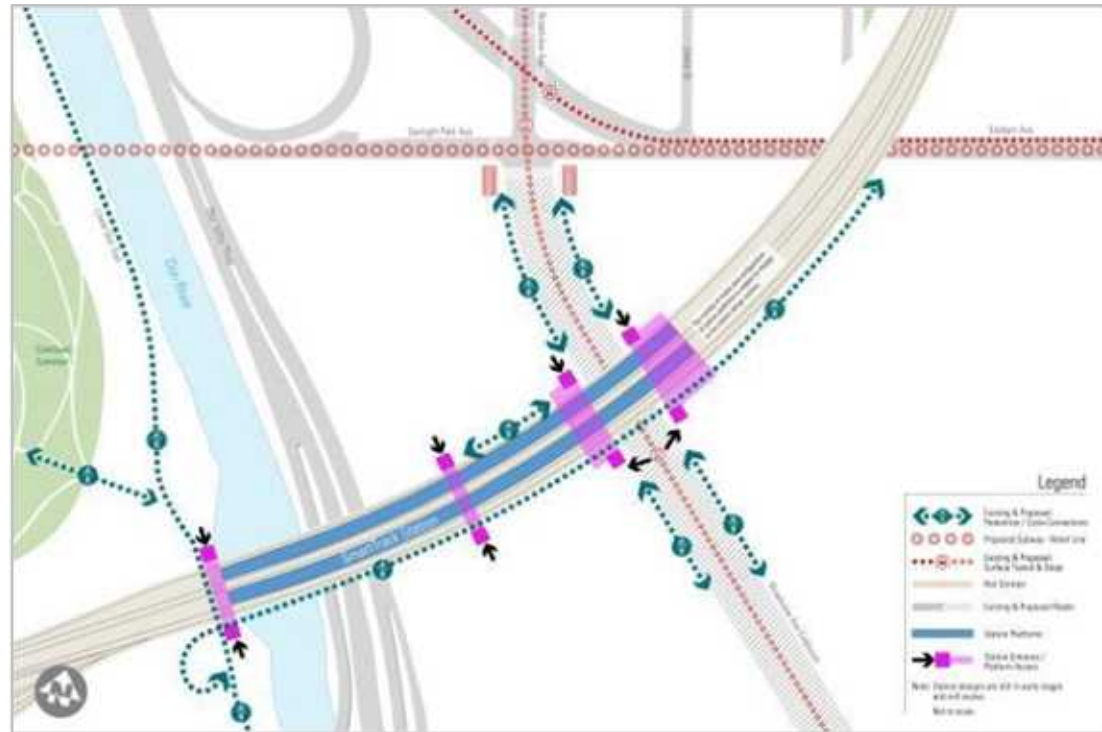
SmartTrack is a new transit solution that uses existing GO Transit rail tracks to provide additional transit options within Toronto. New stations include:

- 6 new SmartTrack stations are planned along the Stouffville/Lakeshore East and Kitchener corridors, and
- 2 new GO stations are planned for the Barrie corridor.
- One of the SmartTrack Stations is East Harbour, within the Unilever Precinct



# East Harbour SmartTrack Station – Concept

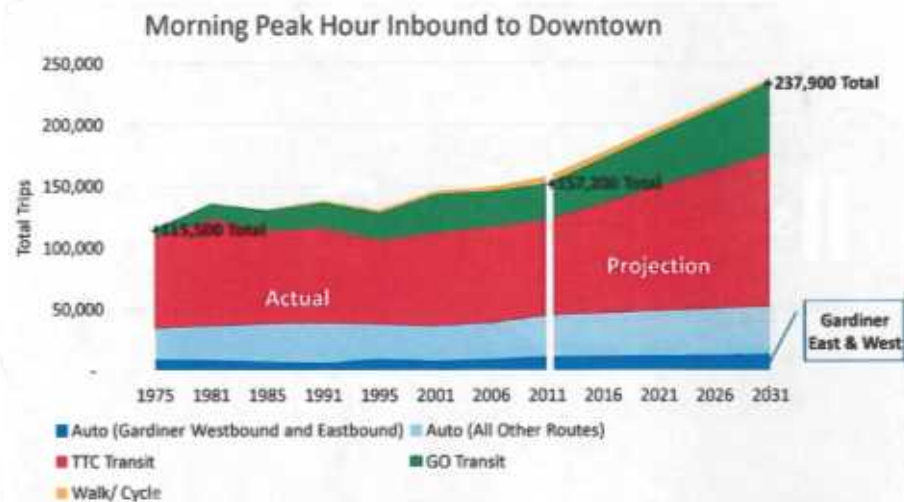
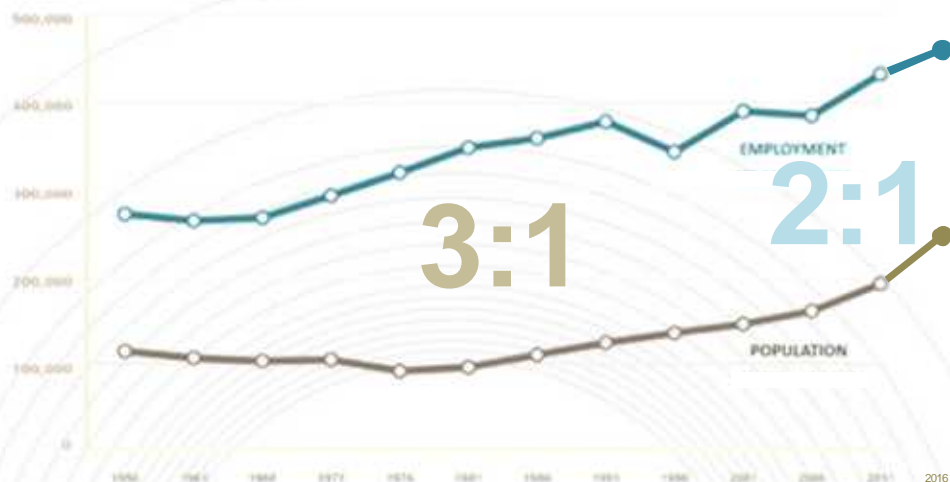
- Planning and design of the station is being integrated with the Unilever Precinct Planning Study.
- Station will provide rapid transit access to serve emerging major employment node.
- Multiple station entrances, including from Broadview Avenue extension and west side of Don River.
- Station is being planned with excellent connections to the proposed Relief Line subway station at Broadview Avenue and Eastern Avenue.







# Downtown Growth







# Complete Streets Downtown



*Bloor Street*



*St. George Street*



*Gerrard Street*



*Richmond & Adelaide Streets*



*Shuter Street*



*Front Street*



*Harbour Street*



*Queen's Quay*



# Port Lands & South of Eastern

Some recent history in South of Eastern:

- Removal of Gardiner Expressway east leg
- Bike lanes on Eastern and Dundas



Port Lands & South of Eastern TSMP:

- New street grid continues prioritization of transit, active transportation
- Reflected in preferred street network
- Conceptual cross-sections balance modes





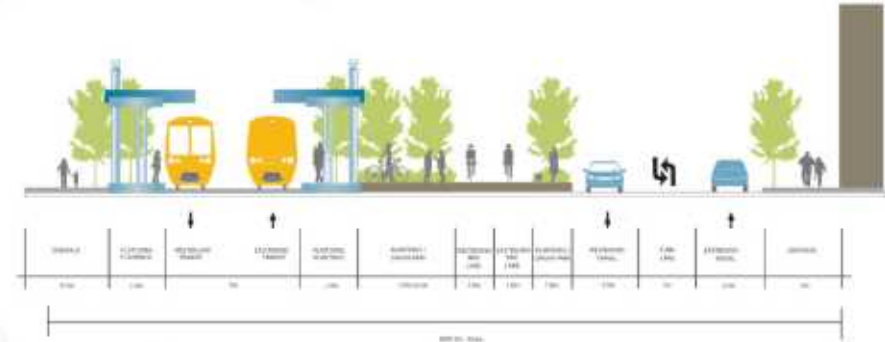


# Precinct Planning

Lower Yonge Precinct  
Yonge St, South of Harbour

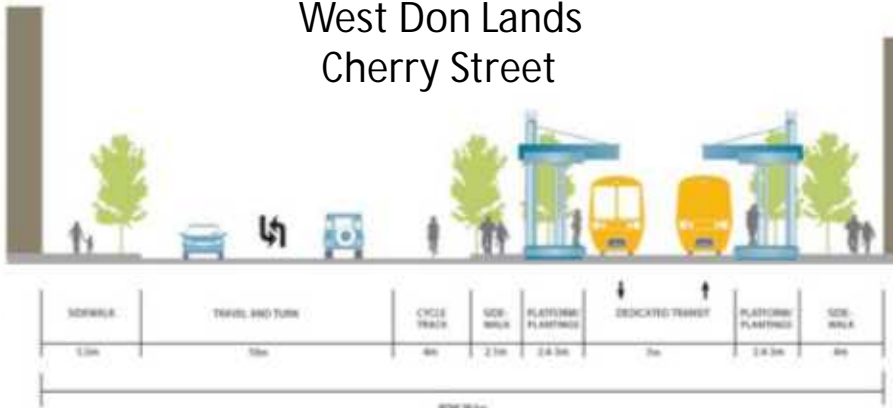


Lower Don Lands  
Commissioners Street

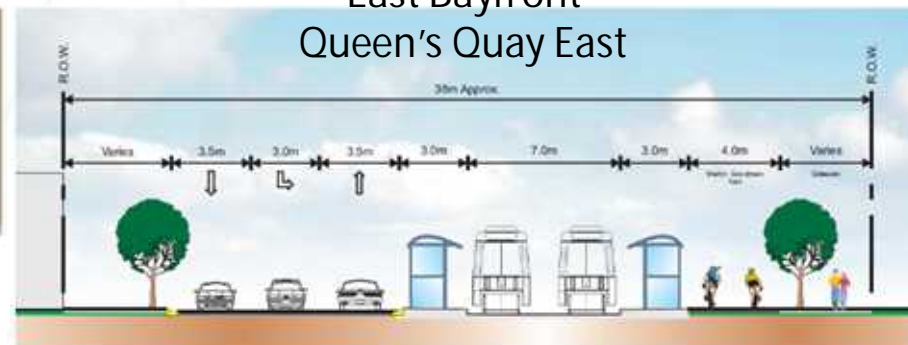


*Focus on People and Places*

West Don Lands  
Cherry Street

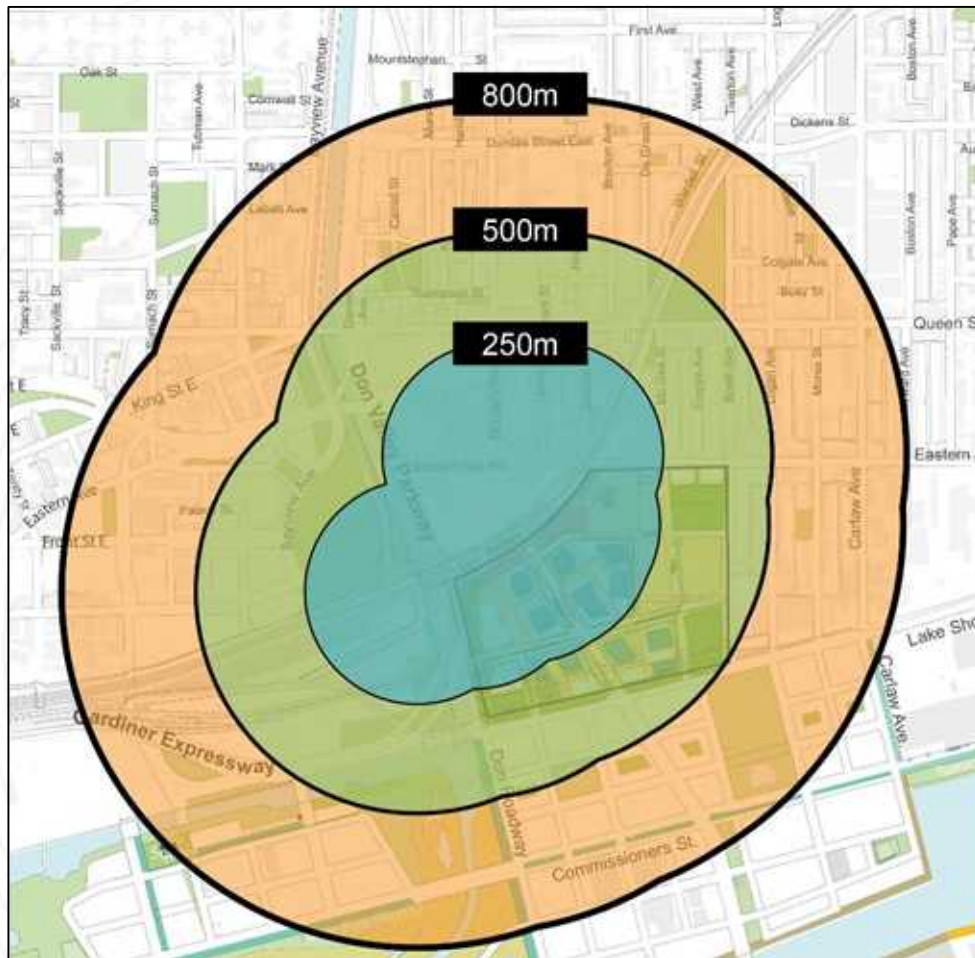


East Bayfront  
Queen's Quay East

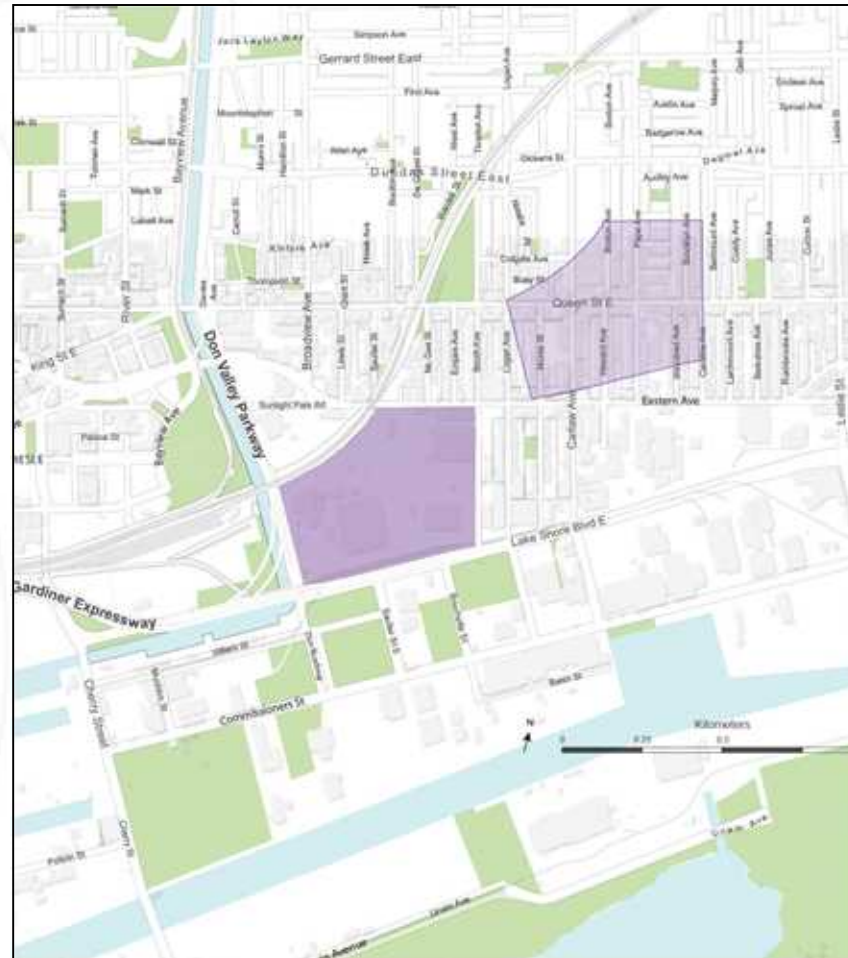




# Travel Demand Management



Walking Distance from Transit Hub

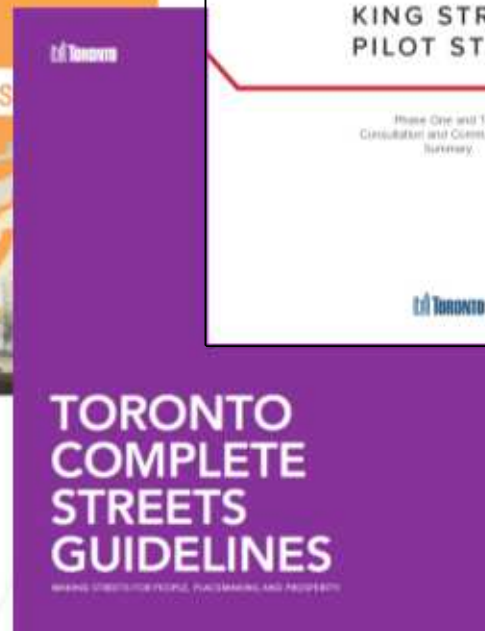


Precinct Scale Comparison



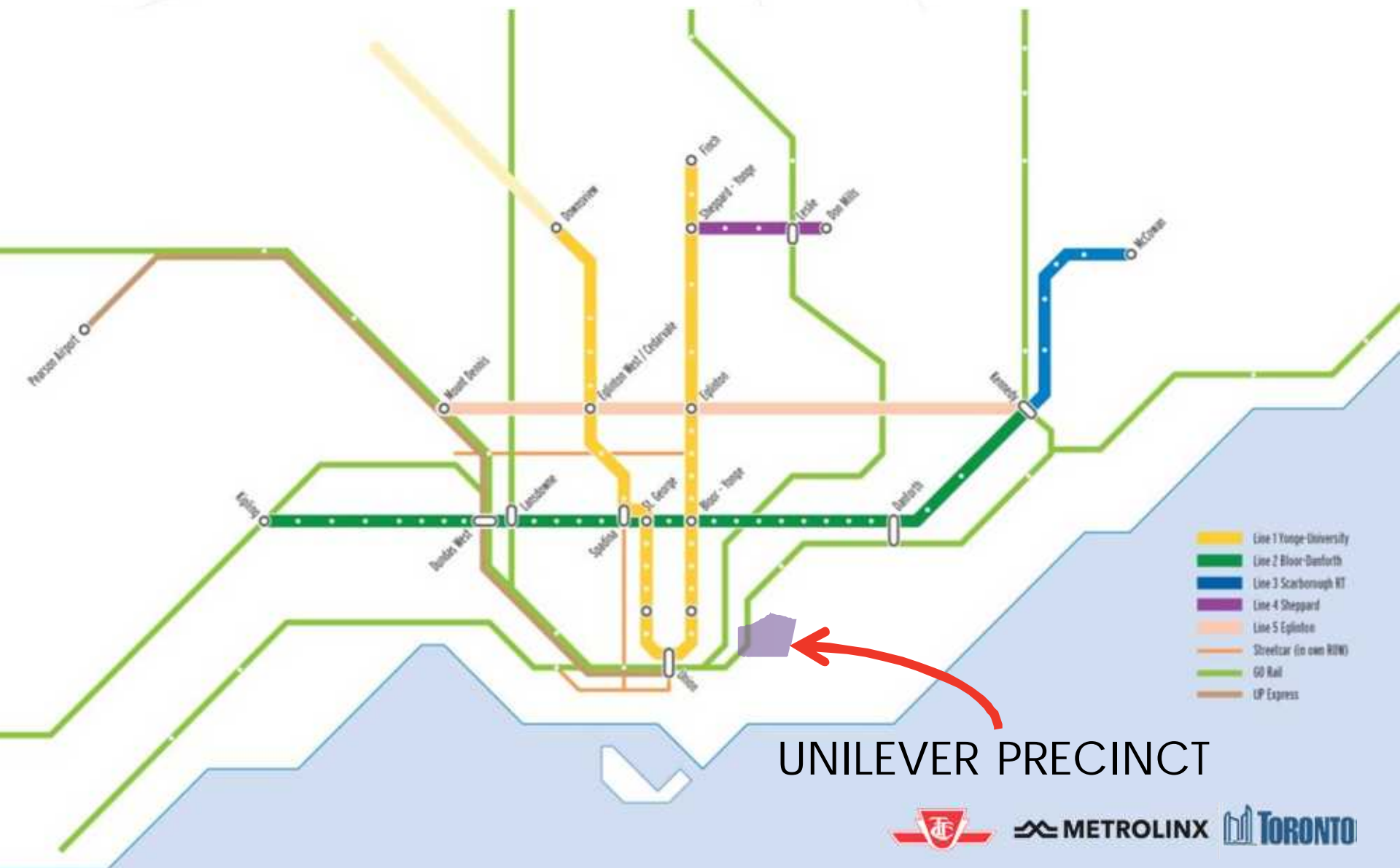


# The City's Transportation Vision





# Our Rapid Transit Network Today







# Our Future Rapid Transit Network

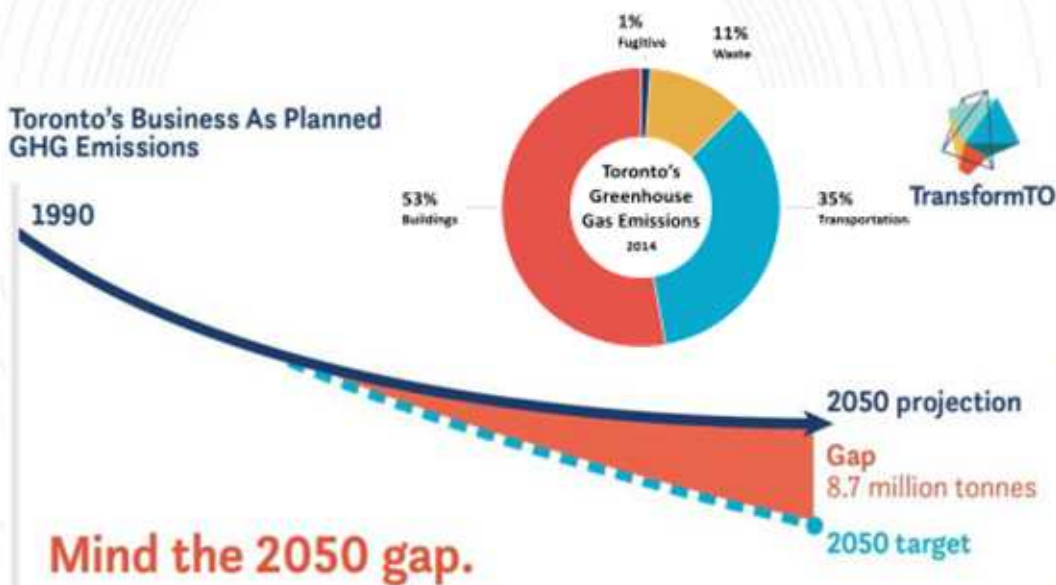




# The Future of Mobility

- Evolution of mobility presents many uncertainties, challenges as well as opportunities
- Need to leverage innovations in mobility and technology to achieve transportation goals

Toronto's Business As Planned GHG Emissions







# Focus on People & Places

- We can focus on the certainties – building place to support proven city-building successes
- Should technology drive city-building OR should technology be used to support good city-building?



*Yorkville*



*Railway Lands*

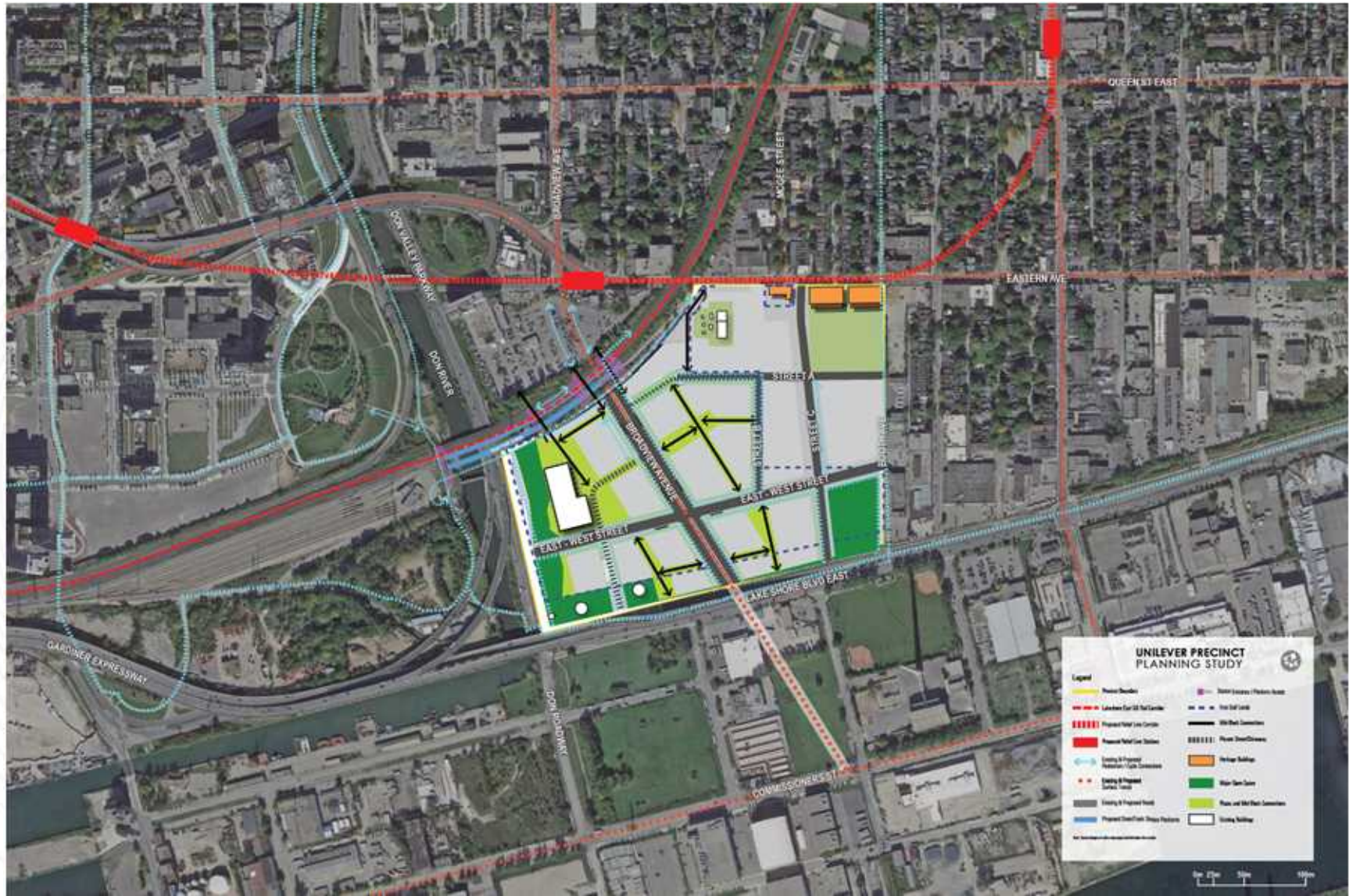




# Workshop



# Workshop





# Please take our survey

- [www.toronto.ca/unileverprecinct](http://www.toronto.ca/unileverprecinct)







# Contact Us



EMAIL to: Carly.Bowman@toronto.ca



MAIL to:

Carly Bowman

Senior Planner, Community Planning

City Hall, 100 Queen Street West,

18th Floor, East Tower

Toronto, ON , M5H 2N2



416-338-3788



@ CityPlanTO #UnileverPrecinct



[www.toronto.ca/unileverprecinct](http://www.toronto.ca/unileverprecinct)

Thank You for Attending!

