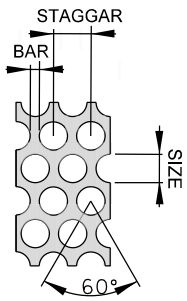


SCREEN DETAIL



THICKNESS = 1.60 mm
 BAR = 1.59 mm
 STAGGAR = 6.35 mm
 HOLE SIZE = 4.76 mm

NOTES :

1. ANCHORS SHALL BE INSTALLED ACCORDING TO MANUFACTURER'S SPECIFICATIONS.
2. TUBE SHALL BE WELDED TO FOOT PLATE ALL AROUND.
3. SQUARE TUBE WITH RADIUS CORNERS AND ROUND PIPE SHALL BE ALUMINUM 6061 T6 ACCORDING TO ASTM B221M-07.
4. MESH SCREEN SHALL BE ALUMINUM PERFORATED SHEET 3003-H14, 16 GAUGE THICKNESS.
5. INSTALL PRESSED-IN PLASTIC END CAPS.
6. WELDING SHALL BE GAS TUNGSTEN ARC WELDING.

SQUARE ALUMINUM TUBE

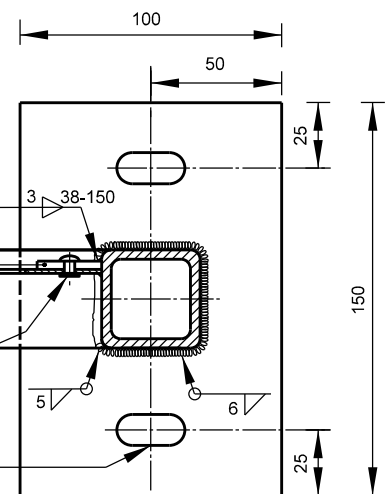
3.175 mm FLAT ALUMINUM BAR

1.6 mm THICK PERFORATED ALUMINUM SHEET

5 mm DIA RIVETS

25x14 mm SLOT FOR HILTI HIT-RE 500 V3 ADHESIVE AND HAS E 1/2" THREADED ANCHOR ROD (HAS) AND EQUIVALENT CHEMICAL ANCHOR WITH LOCK WASHER NOTE 1, TYP

NYLON WASHER, M 12 X 22 X 1.9 REQUIRED BETWEEN LOCK WASHER AND ALUMINUM FOOT PLATE.



SECTION A-A

All dimensions are in millimetres unless otherwise shown.

ENGINEERING & CONSTRUCTION SERVICES STANDARD DRAWING

REV 0

SEP 2018



SPLASH GUARD BARRIER - 1370 mm HIGH

T-982.201

NTS

SHEET 1