

EarlyON Newsletter June – 2018

Table of Contents

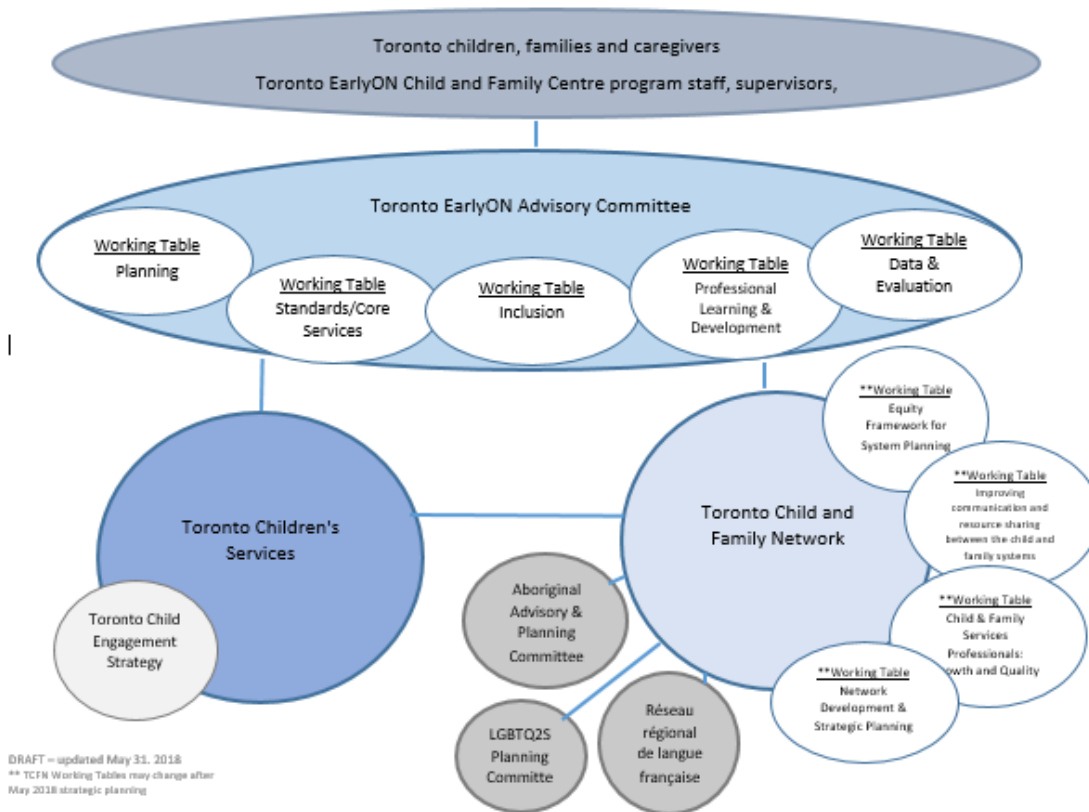
EarlyON Advisory Committee and Working Tables Established	1
City-Wide Sector Collaboration Meeting Coming in Fall 2018	2
Operational Updates.....	2
EarlyON Program Expansion	4
Welcome to New Members of the EarlyON Team	4

EarlyON Advisory Committee and Working Tables Established

Thank you so much to everyone who volunteered to participate in the Toronto EarlyON Advisory Committee and Working Tables. We had an overwhelming response and are continually inspired by the community's engagement and excitement about quality services for children and their families. Advisory and Working Table members were selected to ensure representation from program types, organizations and communities.

The EarlyON team is developing a webpage where we will post all Advisory and Working Table materials including the Terms of Reference with a list of all Advisory and Working Table members. The image below highlights how the EarlyON Advisory and Working Tables will interact with larger system networks and the community broadly.

Toronto EarlyON Child and Family Centres - Engagement Structure



City-Wide Sector Collaboration Meeting Coming in Fall 2018

The EarlyON team is planning a city-wide collaboration meeting for service providers and community partners on September 26, 2018. At this meeting there will be opportunities to provide feedback on the work being led by the EarlyON Advisory Committee and Working Tables for the EarlyON system in Toronto. More details will be available soon.

Operational Updates

RECE Exemption and Mid-Year Reporting

RECE exemptions for the 2018 operating year have been pre-approved for all programs, however, Toronto Children's Services needs to collect formal exemption requests to identify the number of exemptions required system-wide for 2018. Service providers are being asked to complete RECE exemption requests as part of their year-to-date reporting for the 1st half of 2018. An RECE Exemption Request Form will be included in the reporting template provided by TCS. Additional information will be available online soon

Program Enhancement Grant

The City received numerous applications for the Program Enhancement Grant. Thank you for your submissions and we look forward to the positive contributions these program materials will make for children and families.

Key Contacts at TCS

All EarlyON programs are welcome to contact TCS at earlyON@toronto.ca with any questions they may have. EarlyON programs that have been working with a Consultant through District Operations will continue to do so for the next few months. There will be no requirement for program visits in 2018 by District Consultants.

In the coming months, TCS will identify a key contact person for every EarlyON organization to facilitate improved communication and support. More information to come!

Program Modifications

In the event that your program needs to make modifications to the location, times or hours of service please contact TCS for approval. TCS is able to assess the impact that these changes may have on families and other service providers across the city. If you have any further questions about what qualifies as a program modification, please contact us at earlyON@toronto.ca.

EarlyON Branding: Signage

This is a friendly reminder that EarlyON service providers are required to put up new EarlyON signage and remove any existing signage as soon as possible. We appreciate everyone's efforts to acquire their new signs thus far and understand that many of you are patiently awaiting the arrival of your new signs.

Once you have received your signs, please remember that the Ministry of Education will reimburse your organization for any costs associated with the removal and disposal of old signs, and the installation of new signs. Please submit invoices for these costs directly to the Ministry at EarlyON@ontario.ca or by mail to:

Early Years and Child Care Programs and Service Integration Branch
Ministry of Education
24th floor, Mowat Block, 900 Bay St
Toronto, Ontario, M7A 1L2

As the City continues to enhance public awareness of EarlyON Child and Family Centres, it is important that families are able to recognize where and what services are located in their communities.

EarlyON Branding: Online and Written Information

We would also like to remind you to update any online and written information to reference the new name "EarlyON Child and Family Centre" and to please remove any references to previous program types (i.e. Ontario Early Years Centre). We know that families with children are increasingly going online to search out program information and as they hear more about EarlyON programs and services it is important that your online information is up to date.

The City will continue to enhance our [EarlyON webpage](#) and direct families to find and connect to local EarlyON programs. If you have updated program information please send it to earlyon@toronto.ca

Promotional Materials

The City will be distributing materials provided by the Province to increase awareness of EarlyON programs across Toronto. We will be sending brochures, bookmarks and posters to community partners including Toronto Public Libraries, Recreation Centres, Public Health partners, Hospitals, Child Welfare Organizations and others. Please let us know if you would like any materials to distribute in your community or if you have any ideas about how to spread the word about EarlyON Child and Family programs.

EarlyON Program Expansion

New Indigenous EarlyON Programs

The City is currently reviewing proposals for new Indigenous EarlyON programs and services funded through the [Journey Together](#). More information will be available soon.

New French Language EarlyON Programs

Viamonde will be operating the following two new programs:

- The EarlyON Child and Family Centre at École élémentaire Gabrielle-Roy will expand operations to include programming over the summer months.
- A new EarlyON Child and Family Centre at Académie Alexandre-Dumas will be opening in September 2018.

Expression of Interest Coming Soon

As was previously announced, the City will also be expanding the EarlyON system to include at least two new EarlyON centres, as well as a mobile program to support the needs of LGBTQ2S families. The Expression of Interest will be distributed to all EarlyON organizations in the coming month and additional information will be made available on the City's website.

Welcome to New Members of the EarlyON Team

James McLean, Maureen McDonald and Shani Halfon have joined the Children's Services Division as Consultants. They will be working closely with you and the rest of the community to support the EarlyON Child and Family Centre system in Toronto.

James McLean previously worked as a Senior Policy Advisor to Ontario's Minister of Education/Responsible for Early Years and Child Care, where he provided advice on a series of files, including the EarlyON transition and the proposed free child care for pre-schoolers (ages 2.5 to 4).

Maureen McDonald is an RECE and has worked in a variety of community and health settings where she spearheaded a range of initiatives to support early identification and intervention, coordination and integration of multi-sectoral child and family support services across the city.

Shani Halfon is an RECE with a background working in early years policy and advocacy. She has a range of experience collaborating with the early years community including leading the

development of the revised Code of Ethics and Standards of Practice at the College of Early Childhood Educators.