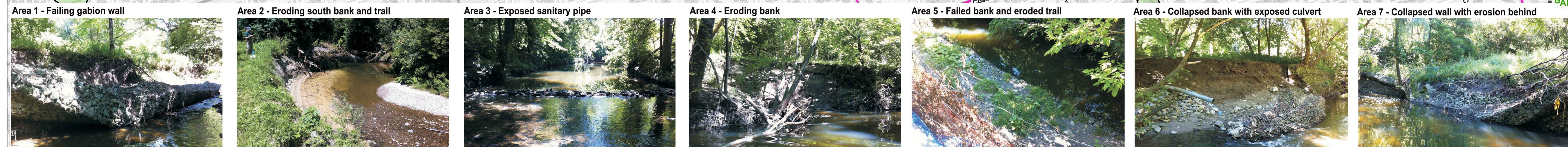
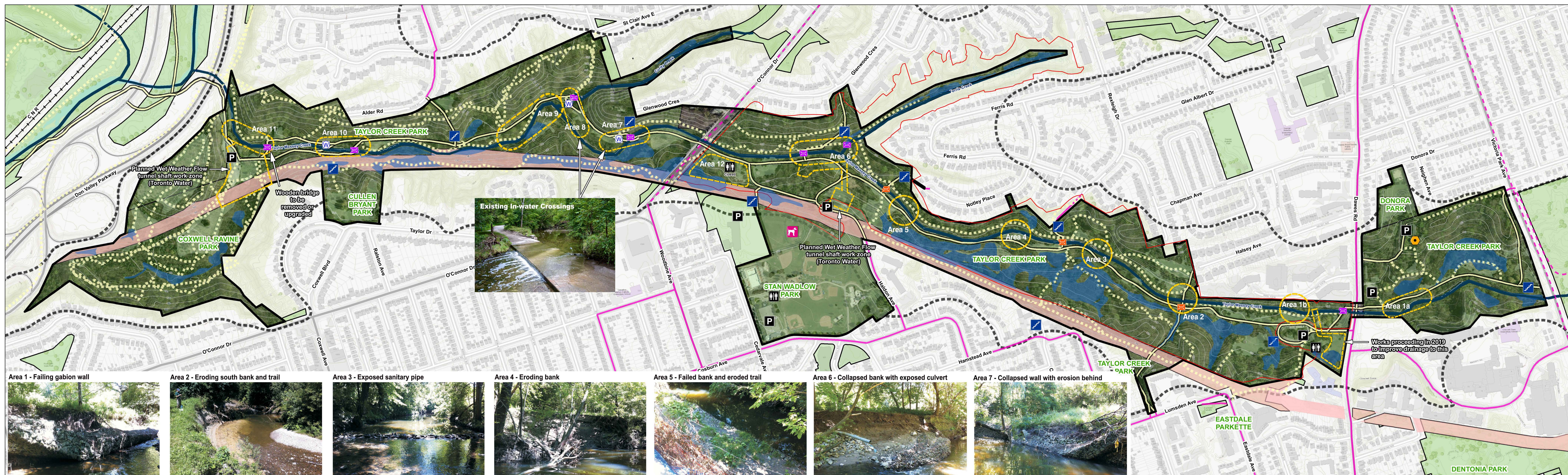
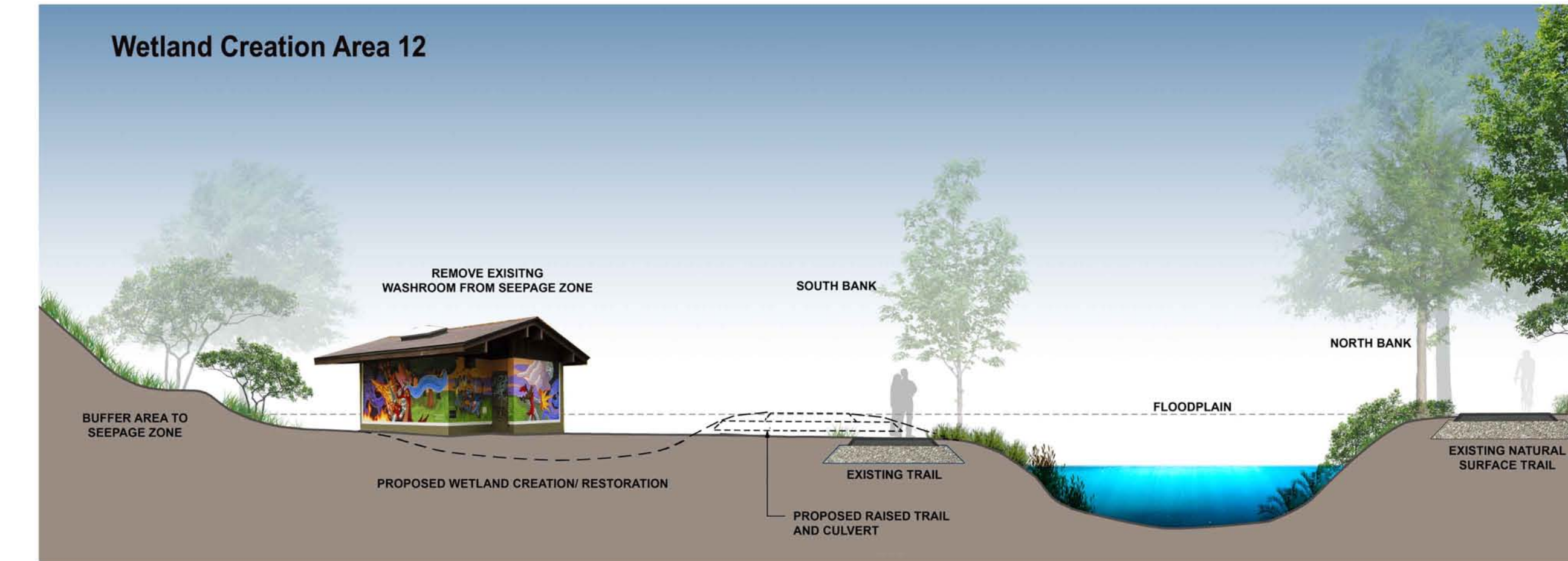
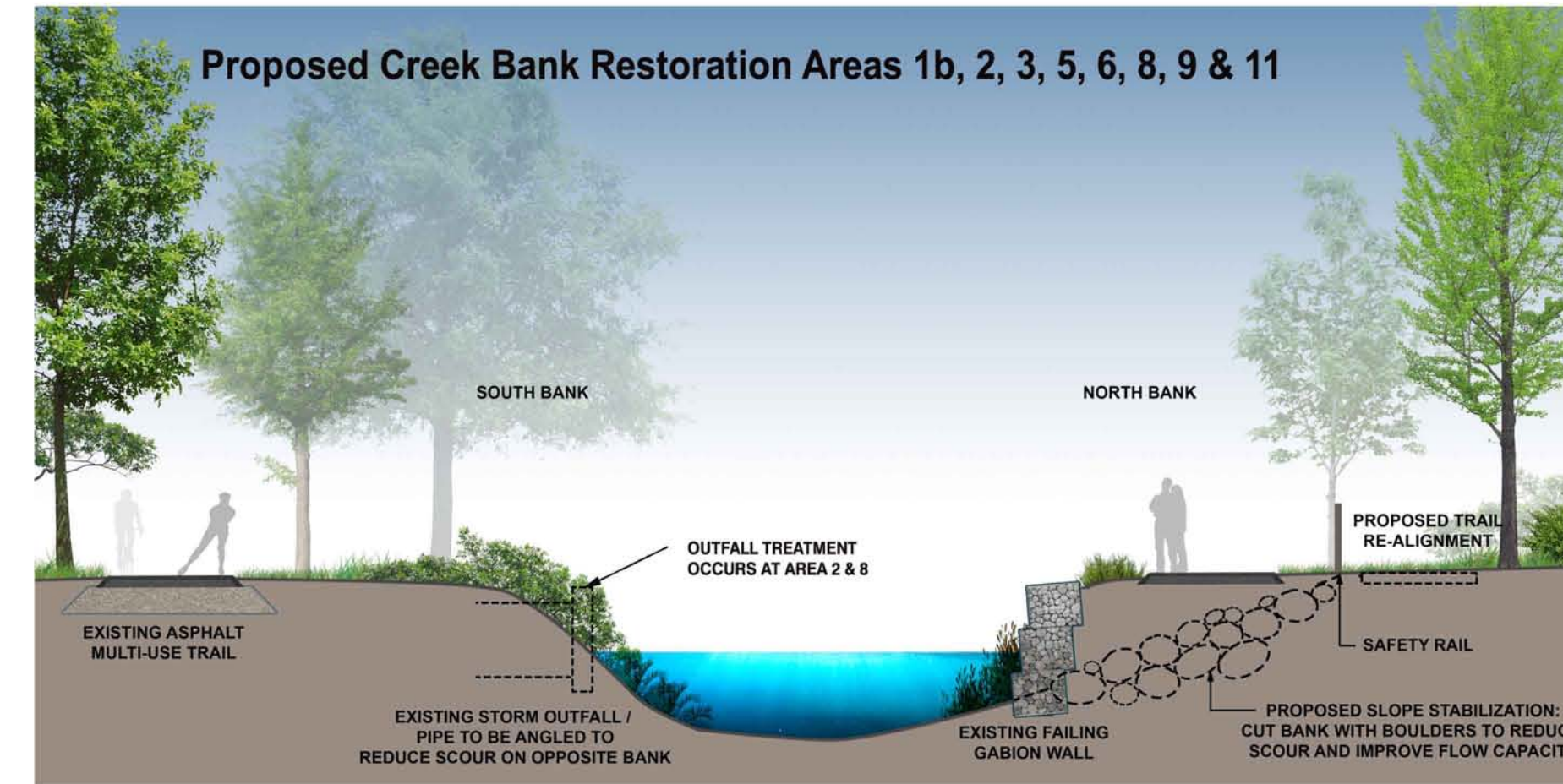
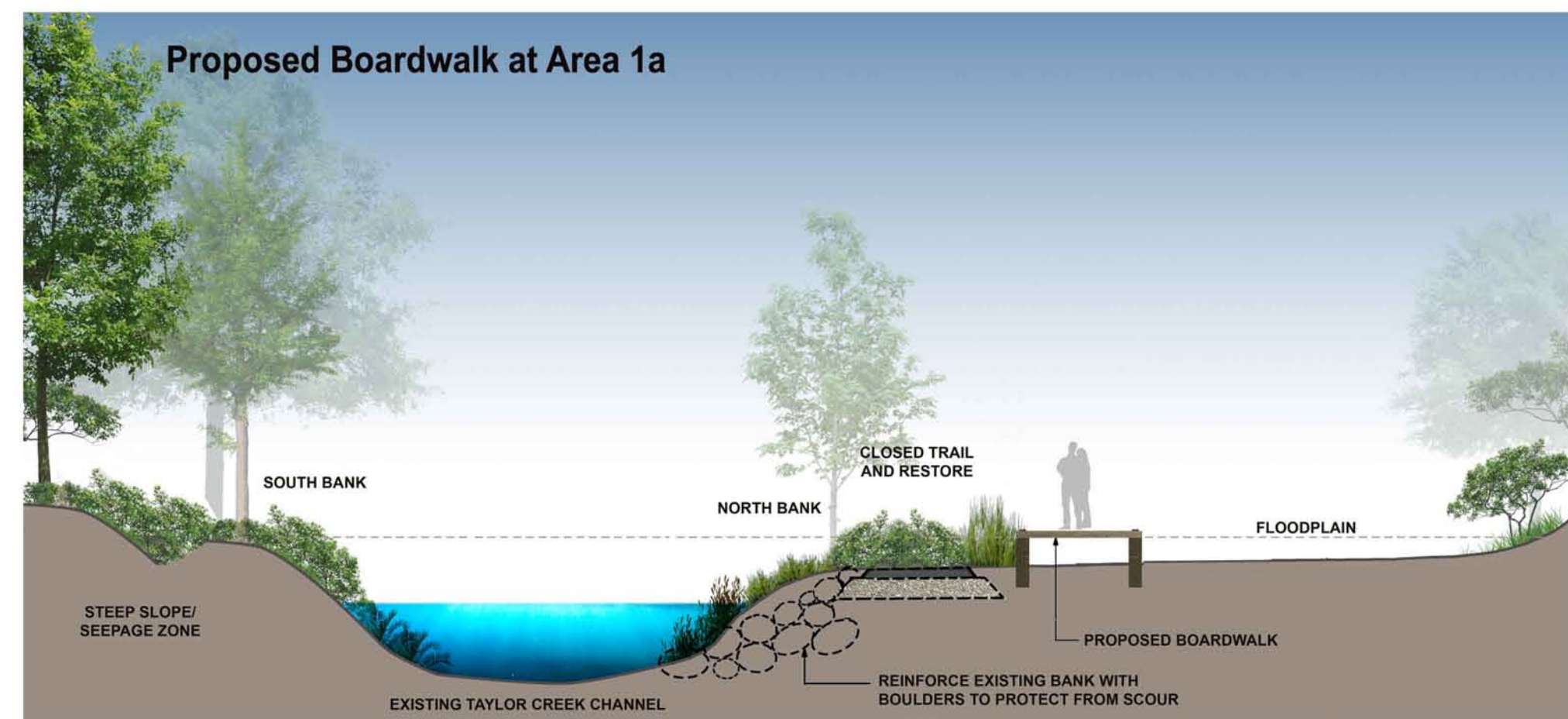
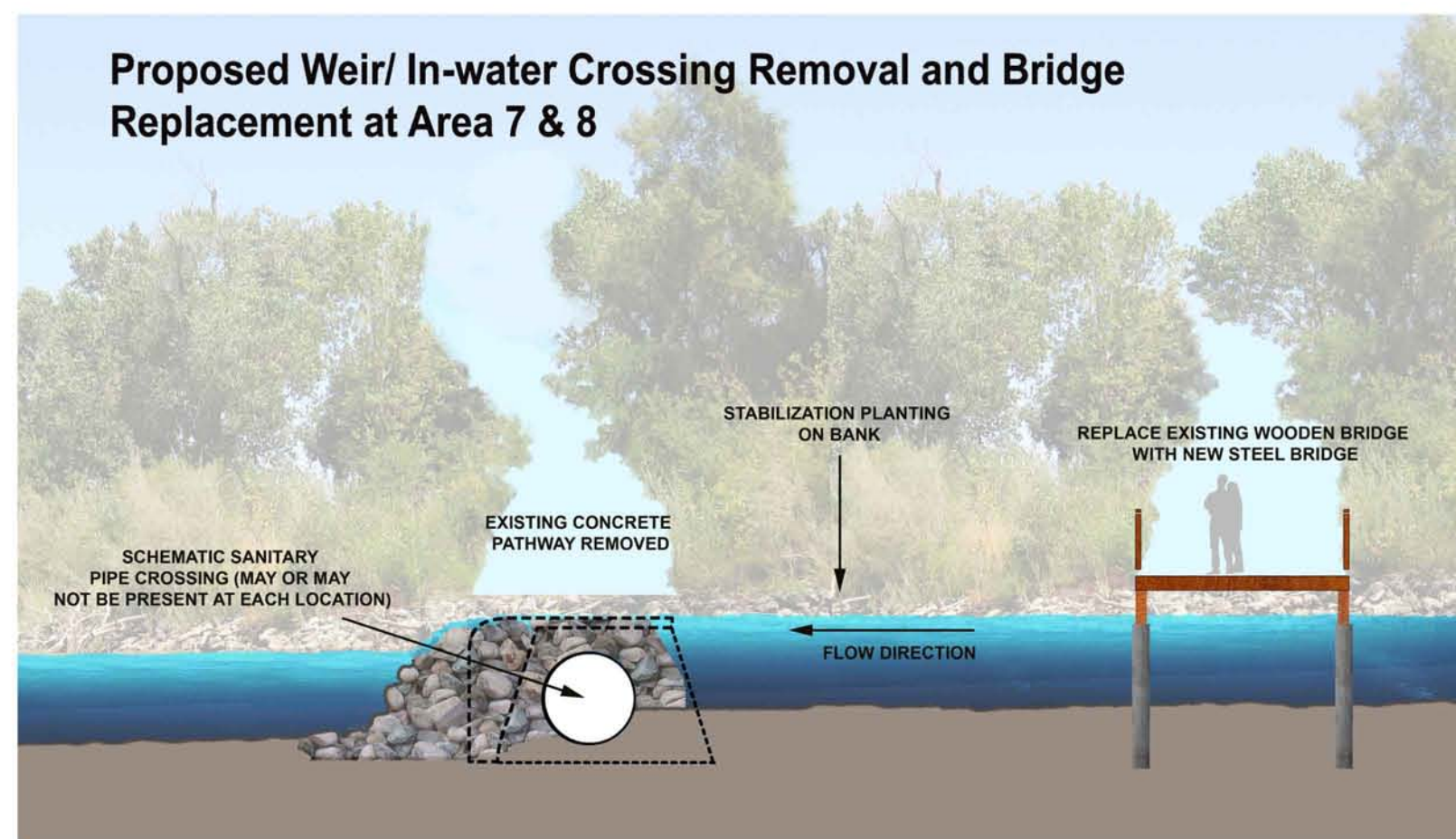


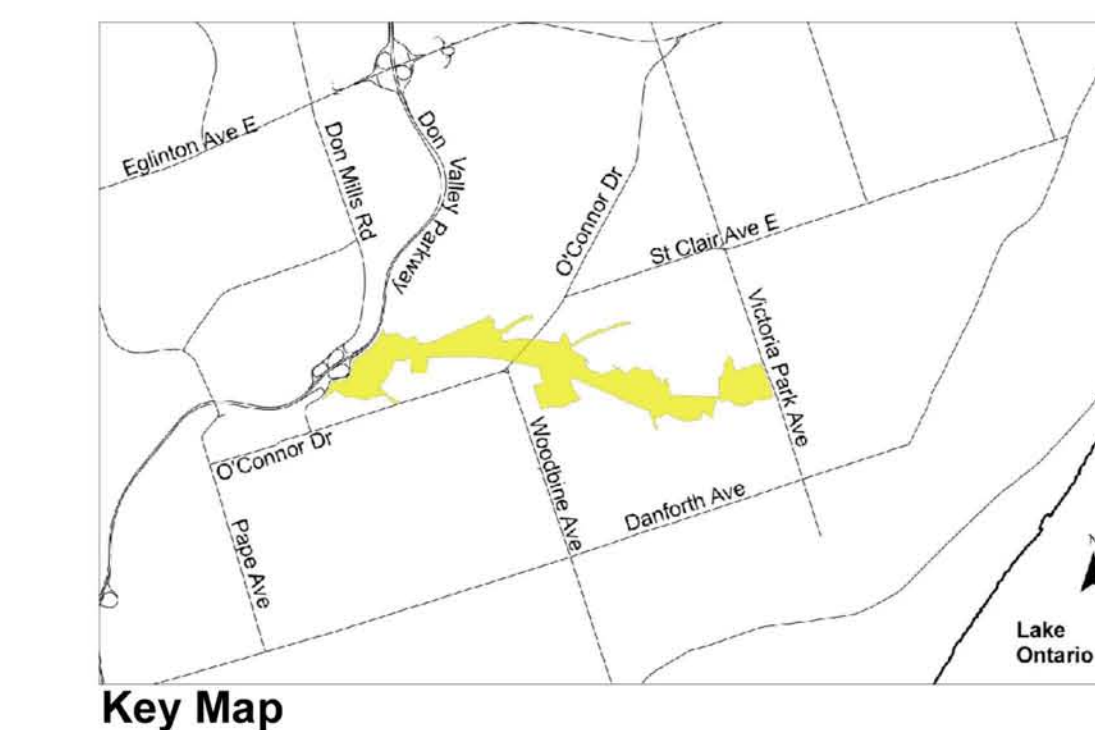
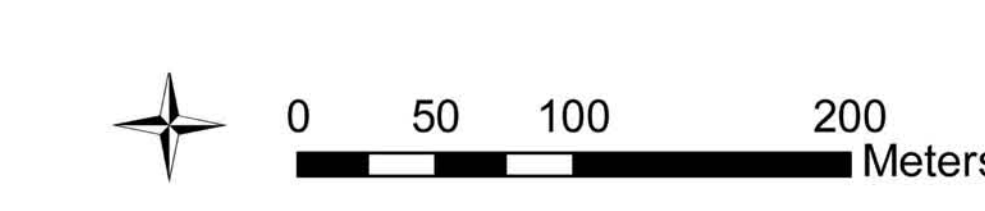
Park-Wide Creek and Stormwater Recommendations

1. Reduce erosion and increase flood capacity by widening the creek channel and stabilizing banks where possible.
2. Protect infrastructure and trails from flooding and resolve drainage issues.
3. Allow for natural channel adjustment processes through restoration works.
4. Improve water quality and potential for fish passage.
5. Consider Low Impact Development techniques when planning improvements to parking areas.



Legend

- Existing Trail Network (10 Year Cycling Network Plan)
- Existing On-Road Bike Routes (10 Year Cycling Network Plan)
- Proposed On-Road Bike Routes (10 Year Cycling Network Plan)
- Existing Informal Trail Network
- Planned Channel & Stabilization Work Areas (Toronto Water) - Addresses Erosion and Wet Weather Flow Projects
- Dog Park
- Children's Peace Theatre
- Parking
- Timber Footbridge
- Steel Footbridge
- Weir/ In-water Crossing
- Stairs
- Washroom
- Wetland
- ESA Boundary
- Hydro Corridor
- City-owned Parkland
- Contour
- Taylor Creek Park Study Area
- Ravine & Natural Feature Protection By-law Boundary



Taylor Creek Park Management Plan
Creek and Stormwater Management Recommendations and Opportunities

Public Information Session

October 3, 2018

