

1 EAST EXTERIOR ELEVATION
A-10 NORTH PIER SCALE 1:50

2 EAST EXTERIOR ELEVATION
A-10 SOUTH PIER SCALE 1:50

METRIC
MEASUREMENTS SHOWN ON THESE PLANS
ARE IN MILLIMETERS UNLESS OTHERWISE NOTED

1.85 USRC SUBDIVISION



DIGITAL INFORMATION	No.	DATE	REVISIONS	INITIAL	SIGNED
DESIGN: y18897arch_1.dgn, y18897archdet_1		02-20-2018	ISSUED FOR TENDER		
		11-10-2017	INCORPORATED METROLINX COMMENTS		
		10-05-2017	ISSUED FOR PERMIT		



Engineering and Construction Services



MICHAEL D'ANDREA, P.ENG.
CHIEF ENGINEER AND
EXECUTIVE DIRECTOR
ENGINEERING &
CONSTRUCTION SERVICES

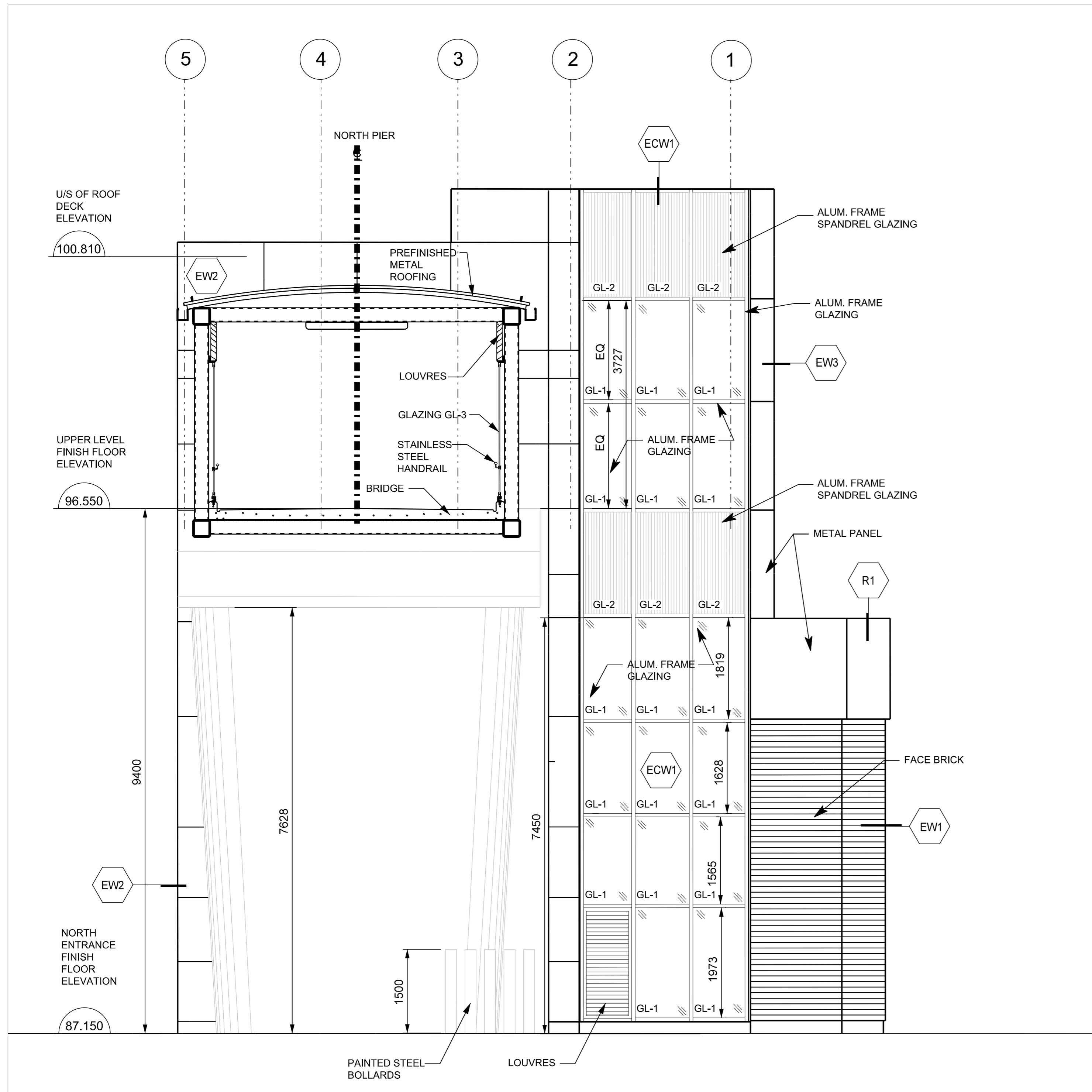
FRANK CLARIZIO, P.ENG.
Director, Design & Construction
Municipal Infrastructure
& Gardiner Rehabilitation

LUIS De JESUS, P.ENG.
ACTING MANAGER
BRIDGES, STRUCTURES
AND EXPRESSWAYS

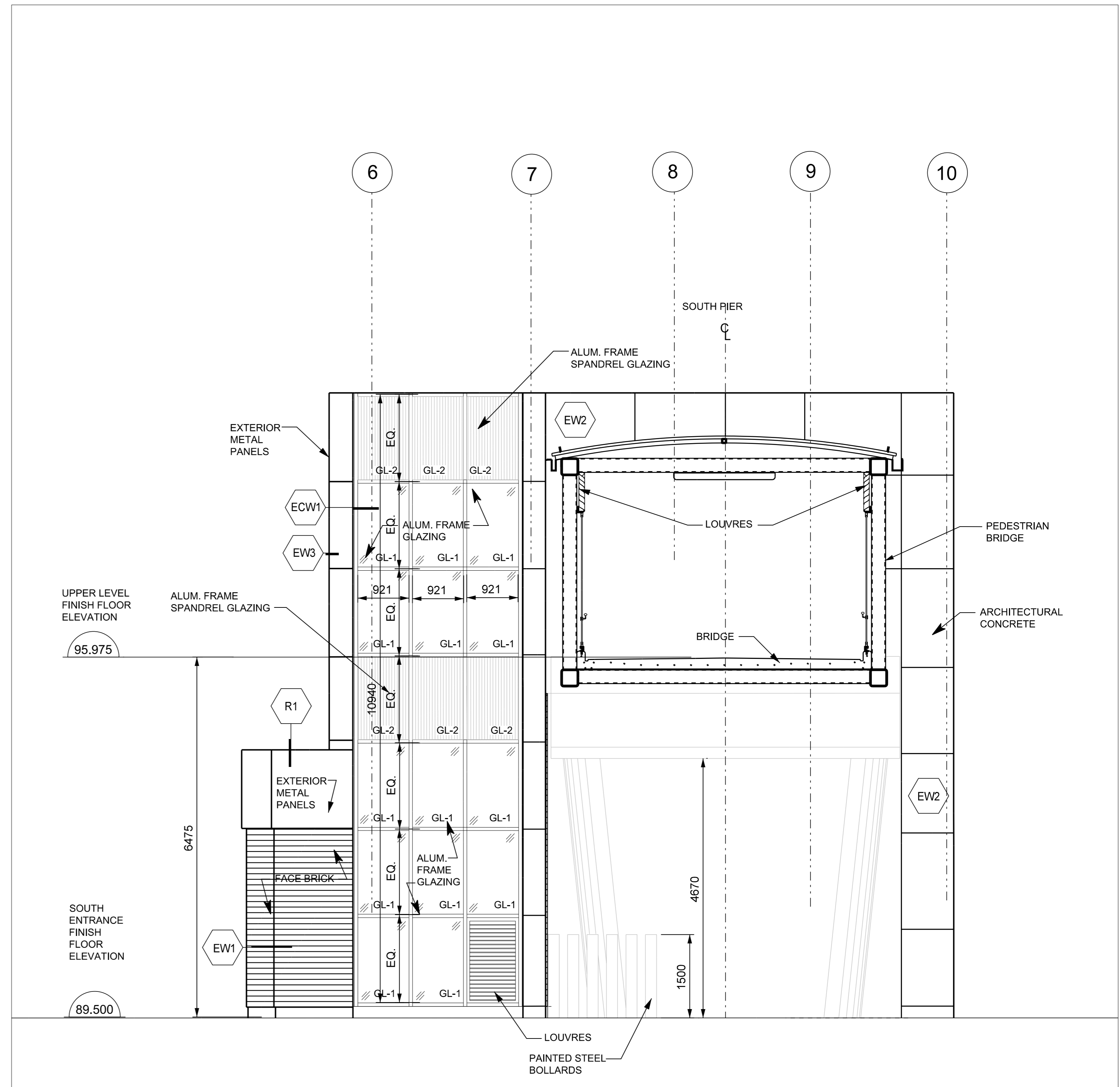
KING-LIBERTY PEDESTRIAN/CYCLIST BRIDGE

DUORO STREET - WESTERN BATTERY ROAD
ARCHITECTURAL
PIERS EXTERIOR ELEVATIONS 1

DESIGN	L.C.	DRAWN	D.P.	CHECKED	L.C.	CONTRACT No. 17-ECS-T1-01BE
SCALE:	1:50		DRAWING NUMBER	897-2018-0135		SHEET A-10
DATE:	February, 2018					



1 SOUTH EXTERIOR ELEVATION
NORTH PIER SCALE 1:50



2 NORTH EXTERIOR ELEVATION
SOUTH PIER SCALE 1:50

METRIC
MEASUREMENTS SHOWN ON THESE PLANS
ARE IN MILLIMETERS UNLESS OTHERWISE NOTED

1.85 USRC SUBDIVISION

AECOM
AECOM Canada Architects Ltd.
300 Water Street, Whitby, Ontario, Canada L1N 9J2
T905.668.9363 F905.668.0221
CONSULTANTS

Toronto Engineering and Construction Services

KING-LIBERTY PEDESTRIAN/CYCLIST BRIDGE
DUORO STREET - WESTERN BATTERY ROAD
ARCHITECTURAL
PIERS EXTERIOR ELEVATIONS 4

DIGITAL INFORMATION	No.	DATE	REVISIONS	INITIAL	SIGNED
DESIGN: y18897arch4_4.dgn, y18897archdet_1		02-20-2018	ISSUED FOR TENDER		
		11-10-2017	INCORPORATED METROLINX COMMENTS		
		10-05-2017	ISSUED FOR PERMIT		

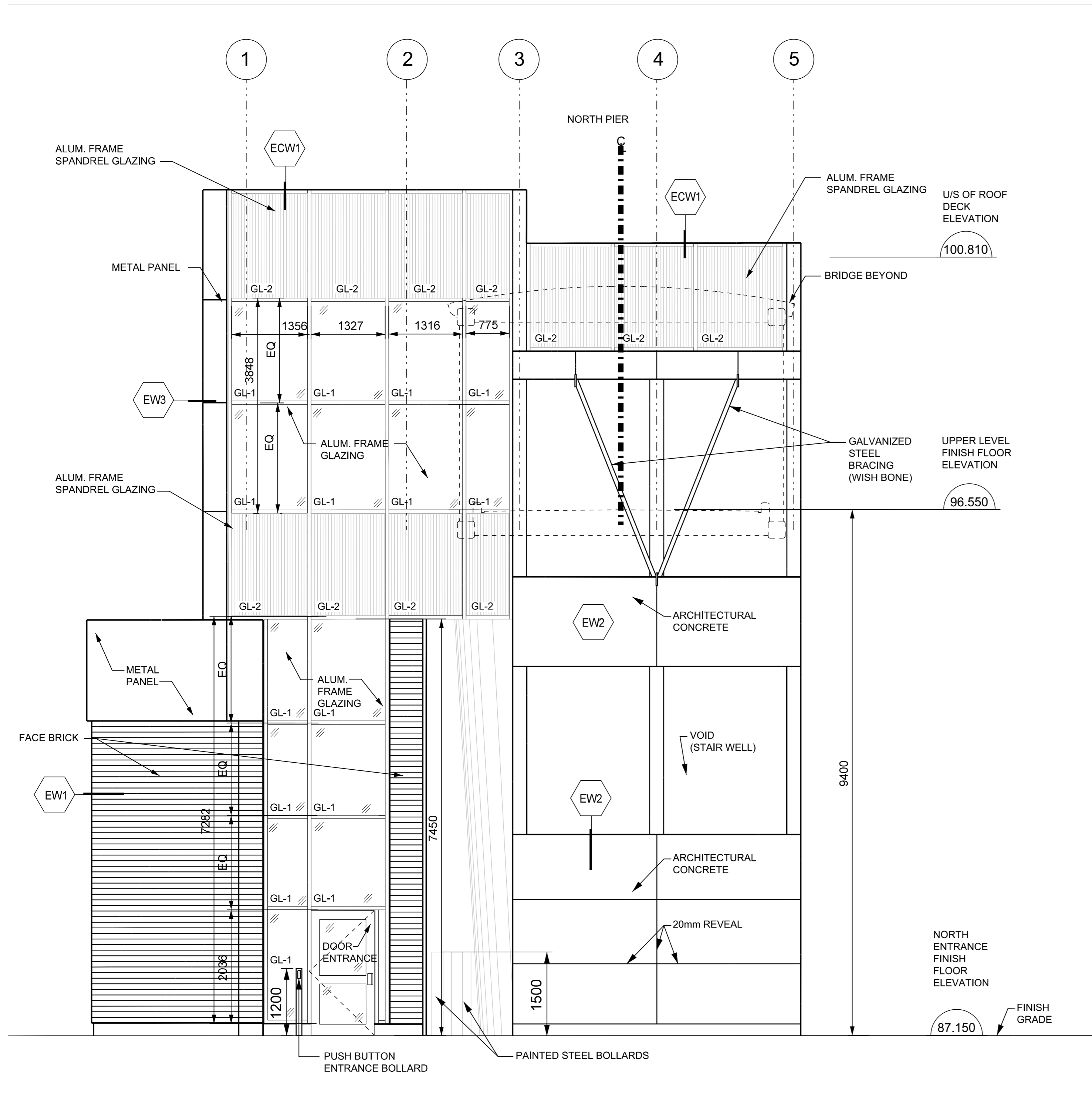


FRANK CLARIZO, P.ENG.
Director, Design & Construction
Municipal Infrastructure
& Gardiner Rehabilitation

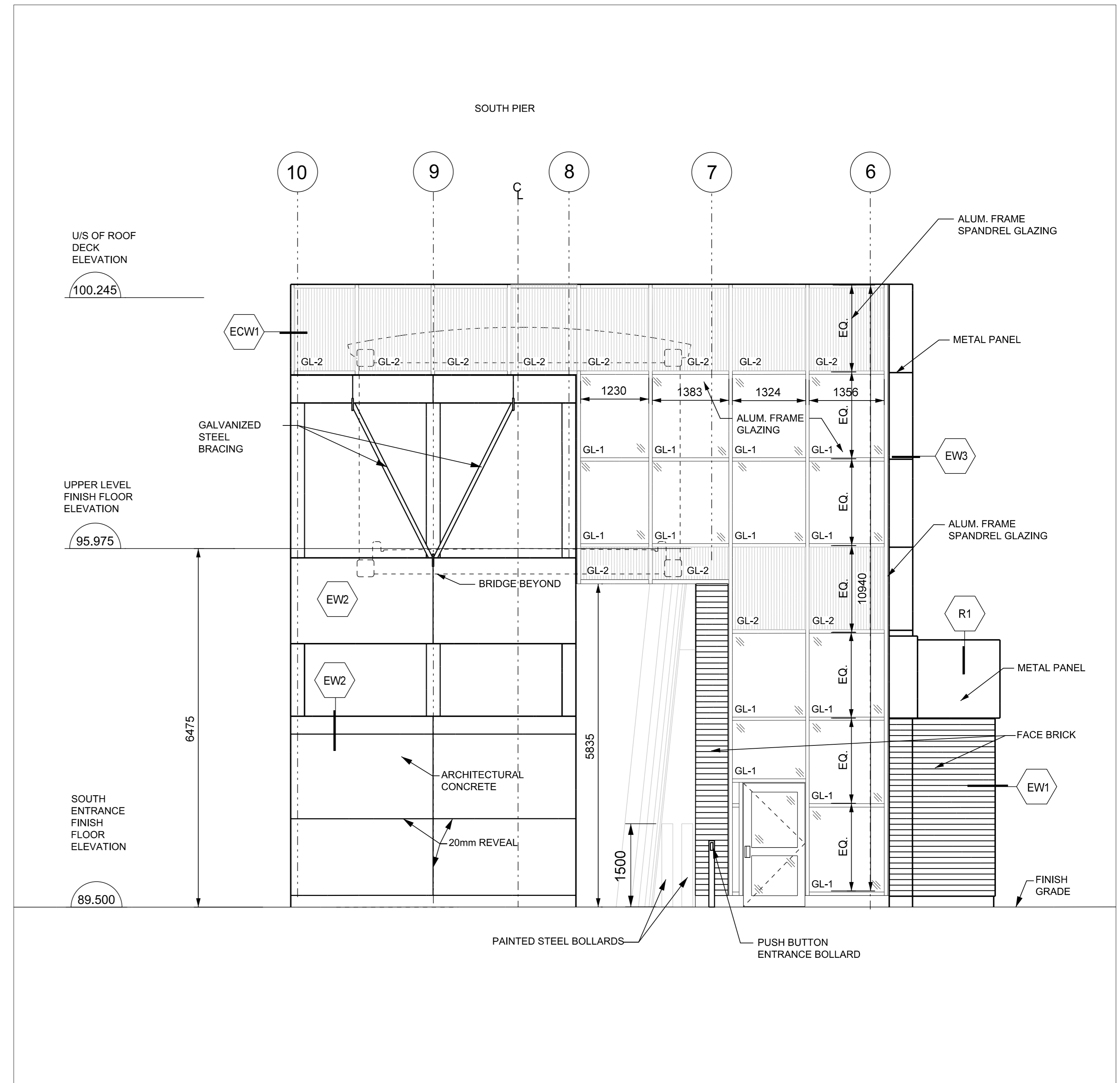
LUIS De JESUS, P.ENG.
ACTING MANAGER
BRIDGES, STRUCTURES
AND EXPRESSWAYS

MICHAEL D'ANDREA, P.ENG.
CHIEF ENGINEER AND
EXECUTIVE DIRECTOR
ENGINEERING &
CONSTRUCTION SERVICES

DESIGN	L.C.	DRAWN	D.P.	CHECKED	L.C.	CONTRACT No. 17-ECS-T1-01BE
SCALE:	1: 50		DRAWING NUMBER	897-2018-0138		SHEET A-13
DATE:	February, 2018					



1 NORTH EXTERIOR ELEVATION
NORTH PIER SCALE 1:50



2 SOUTH EXTERIOR ELEVATION
SOUTH PIER SCALE 1:50

METRIC
MEASUREMENTS SHOWN ON THESE PLANS
ARE IN MILLIMETERS UNLESS OTHERWISE NOTED

DIGITAL INFORMATION	No.	DATE	REVISIONS	INITIAL	SIGNED
		02-20-2018	ISSUED FOR TENDER		
		11-10-2017	INCORPORATED METROLINX COMMENTS		
		10-05-2017	ISSUED FOR PERMIT		

Toronto Engineering and Construction Services



MICHAEL D'ANDREA, P.ENG.
CHIEF ENGINEER AND
EXECUTIVE DIRECTOR
ENGINEERING &
CONSTRUCTION SERVICES

FRANK CLARIZO, P.ENG.
Director, Design & Construction
Municipal Infrastructure
& Gardiner Rehabilitation

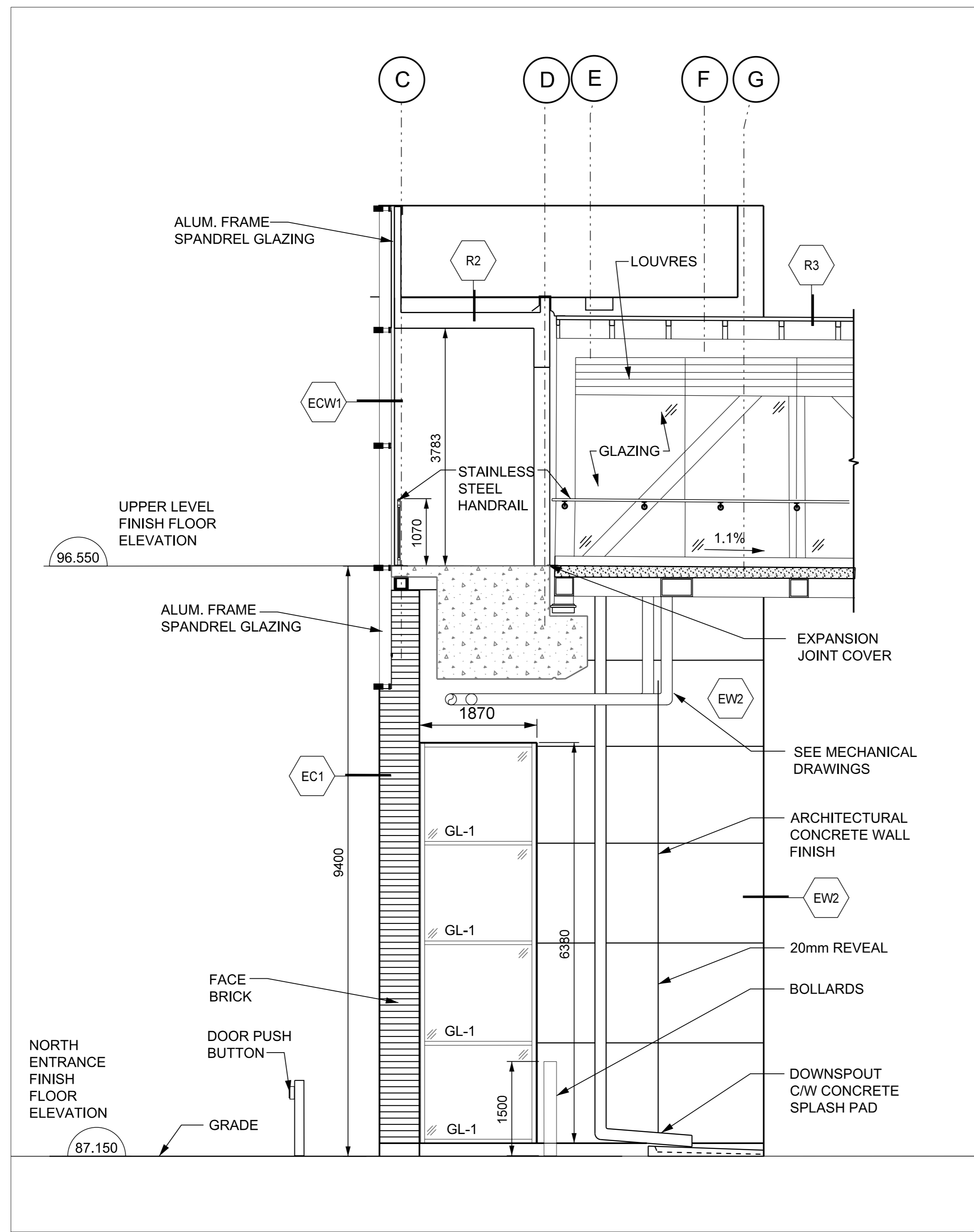
LUIS De JESUS, P.ENG.
ACTING MANAGER
BRIDGES, STRUCTURES
AND EXPRESSWAYS

1.85 USRC SUBDIVISION

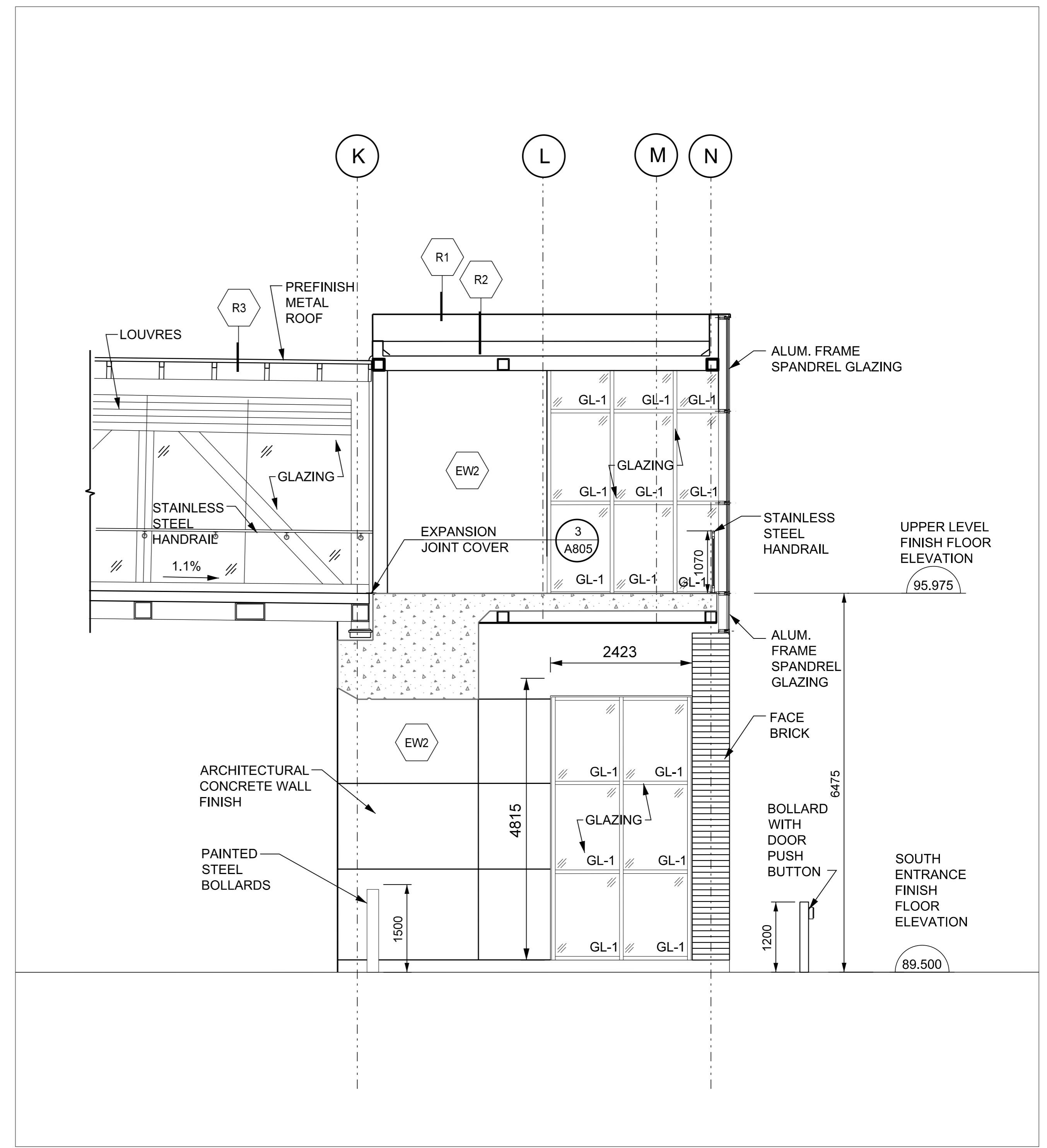


KING-LIBERTY PEDESTRIAN/CYCLIST BRIDGE
DUORO STREET - WESTERN BATTERY ROAD
ARCHITECTURAL
PIERS EXTERIOR ELEVATIONS 2

DESIGN	L.C.	DRAWN	D.P.	CHECKED	L.C.	CONTRACT No. 17-ECS-T1-01BE
SCALE:	1:50		DRAWING NUMBER	897-2018-0136		SHEET A-11
DATE:	February, 2018					



1 WEST EXTERIOR ELEVATION
A-14 NORTH ELEVATOR TOWER SCALE 1:50



2 WEST EXTERIOR ELEVATION
A-14 SOUTH ELEVATOR TOWER SCALE 1:50

METRIC
MEASUREMENTS SHOWN ON THESE PLANS
ARE IN MILLIMETERS UNLESS OTHERWISE NOTED

1.85 USRC SUBDIVISION

AECOM
AECOM Canada Architects Ltd.
300 Water Street, Whitby, Ontario, Canada L1N 9J2
T905.668.9363 F905.668.0221
CONSULTANTS

Toronto Engineering and Construction Services

KING-LIBERTY PEDESTRIAN/CYCLIST BRIDGE
DUORO STREET - WESTERN BATTERY ROAD
ARCHITECTURAL
PIERS EXTERIOR ELEVATIONS 5

DIGITAL INFORMATION	No.	DATE	REVISIONS	INITIAL	SIGNED
		02-20-2018	ISSUED FOR TENDER		
		11-10-2017	INCORPORATED METROLINX COMMENTS		
		10-05-2017	ISSUED FOR PERMIT		
DESIGN: y18897arch_5.dgn, y18897archdet_1					

FRANK CLARIZIO, P.ENG.
Director, Design & Construction
Municipal Infrastructure
& Gardiner Rehabilitation

MICHAEL D'ANDREA, P.ENG.
CHIEF ENGINEER AND
EXECUTIVE DIRECTOR
ENGINEERING &
CONSTRUCTION SERVICES

LUIS De JESUS, P.ENG.
ACTING MANAGER
BRIDGES, STRUCTURES
AND EXPRESSWAYS

DESIGN	L.C.	DRAWN	D.P.	CHECKED	L.C.	CONTRACT No. 17-ECS-T1-01BE
SCALE:	1:50		DRAWING NUMBER	897-2018-0139		SHEET A-14
DATE:	February, 2018					

