

November 19, 2018

Don and Central Waterfront Wet Weather Flow System Coxwell Bypass Tunnel construction at Coxwell Ravine Park

Contract #17ECS-MI-04DC

Start Date: Monday, December 3, 2018

Expected End Date: December 2023

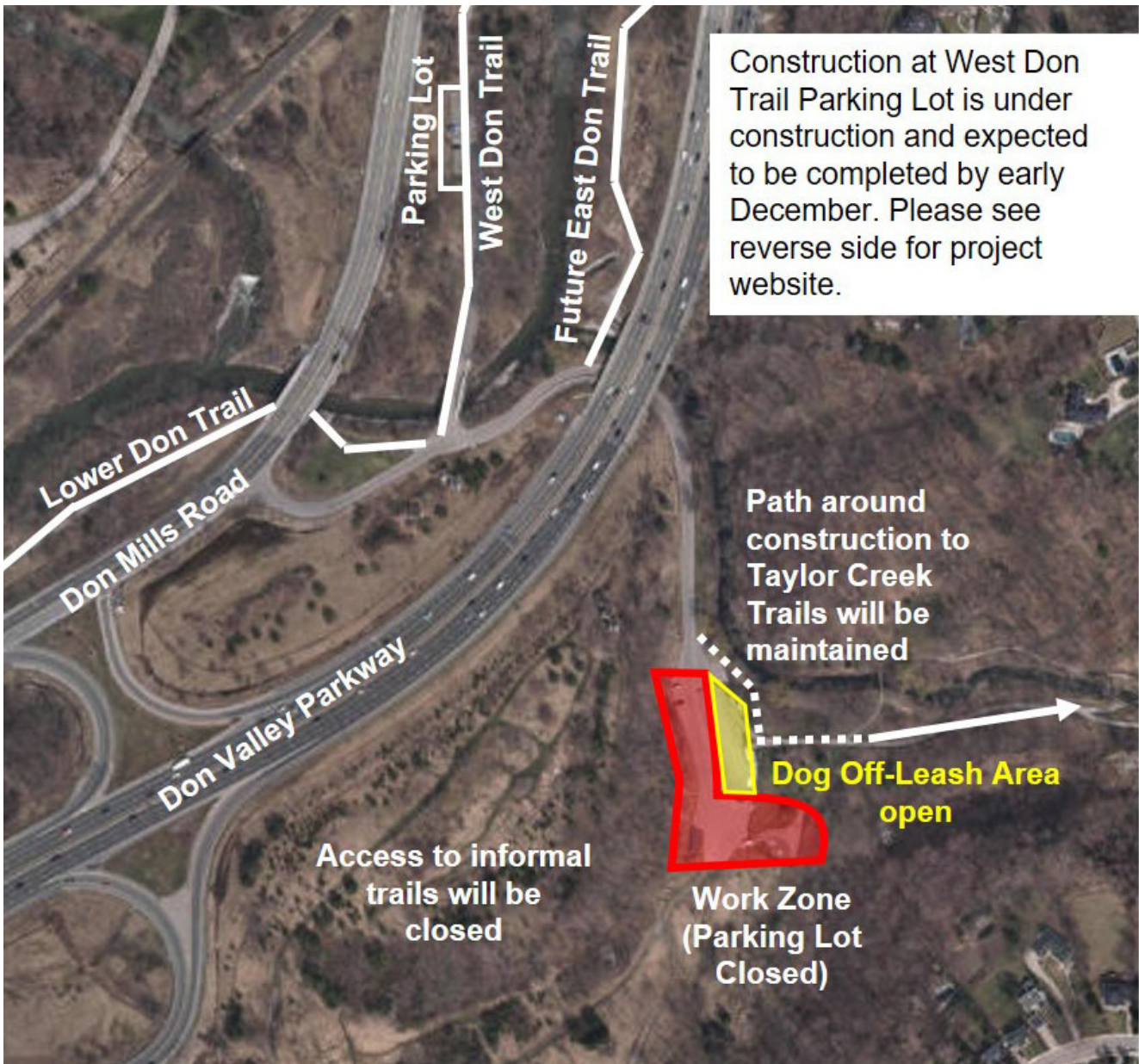
Timeline is subject to change. Future notice to be provided.

The Don River and Central Waterfront Wet Weather Flow System (DR&CW) project is an integrated system to manage rain and melted snow. The project will keep combined sewer overflows out of the Lower Don River, Taylor-Massey Creek and Inner Harbour by capturing water in the tunnel system, transporting it for treatment, and storing it during extreme rainstorms until system capacity is available and the water can be treated. Once fully constructed, the project will include:

- A 22 km tunnel system, consisting of three integrated tunnels: Coxwell Bypass Tunnel, Taylor Massey Creek Tunnel, Inner Harbour West Tunnel
- 12 wet weather flow storage shafts along the tunnels
- 27 connection points to the tunnels for stormwater and combined sewer overflow.
- 7 off-line storage tanks.
- Real Time Control (RTC) to regulate flows in the City's sewer system.

As part of the Coxwell Bypass Tunnel construction, one (1) of twelve (12) underground wet weather flow storage shafts will be built at Coxwell Ravine Park. This project is part of the Council-approved 2017-2026 Capital Works Program.

MAP OF WORK AREA











All excavation will be completed behind site fencing. Tunneling will take place 50 metres below ground and will not have noticeable impacts at ground level or to buildings and structures.

Construction will involve:

- Site clearing, including removal of shrubs and trees
- Installing fencing around the perimeter of the work area
- Set up, including delivery of equipment and materials
- Installing shaft support piles and excavating the wet weather flow shaft
- Removing materials from the shaft to offsite disposal facilities
- Lining of the wet weather flow shaft with concrete
- Replanting trees and shrubs that were removed

WHAT TO EXPECT DURING CONSTRUCTION

You may experience dust, noise, vibration, and other inconveniences at the Coxwell Ravine Parking Lot. Continuous monitoring and control mitigation plans will reduce the impacts to comply with the City's noise bylaw. Service interruptions are not planned or anticipated for the work. No impacts to nearby residential homes are anticipated. We appreciate your patience.

	<p>Work Hours: Work will take place:</p> <ul style="list-style-type: none"> • Monday to Friday: 7 a.m. to 7 p.m. • Saturday: 9 a.m. to 7 p.m.
	<p>Site Access: Construction vehicles will enter and exit the site from Don Mills Road. Vehicular access to the Dogs Off-Leash Area and Taylor Creek Trail will be restricted. Access for pedestrians and cyclists will be maintained.</p>
	<p>Traffic Management: Efforts have been made to manage traffic in the area for the safety of workers, road users and residents. No significant delays are expected during construction.</p> <ul style="list-style-type: none"> • Delivery of large construction equipment will be planned to minimize impact to the community and temporary lane closures • Should temporary lane closures be required, signage will be posted in advance to direct road users
	<p>Parking: Public parking will not be available in the Coxwell Ravine Park Lot adjacent to the Dogs Off-Leash Area for the duration of construction. Alternate public parking is at the West Don Trail parking lot upon completion of construction. Please visit project webpage for more information https://yoursay.ca/east-don-trail</p>
	<p>Dogs Off Leash Area: The DOLA will remain open during construction. Please park at the alternate public parking lot at the West Don Trail.</p>
	<p>Tree Removals: A total of forty-nine (49) shrubs and trees, including forty-six (46) small trees (less than 10 centimeter diameter) will be removed from the site. A tree replanting plan will replace all 49 trees according to City of Toronto Parks and Toronto and Region Conservation Authority policies. In some cases removing one (1) tree may be replaced with three (3).</p>
	<p>Restoration: Areas affected by construction will be restored.</p>
	<p>Pedestrian and Cycling Access: Construction will not impact access to these Trails. The Lower Don Trail will be closed by Parks Staff during the winter season. The East Don Trail and parking lot at the West Don Trail is currently in construction - please visit this website for information https://yoursay.ca/east-don-trail</p>

MORE INFORMATION:

Project Manager	Robert H. Mayberry, 416-392-4061, Robert.Mayberry@toronto.ca
TTY Hearing Impaired Service	416-338-0889 (7 days a week, 8 a.m. to 5 p.m., closed holidays)
General inquiries	311
Website	www.toronto.ca/drcw-project

Thank you for your patience. Building a great city takes time. Better infrastructure for all of us is worth the wait.