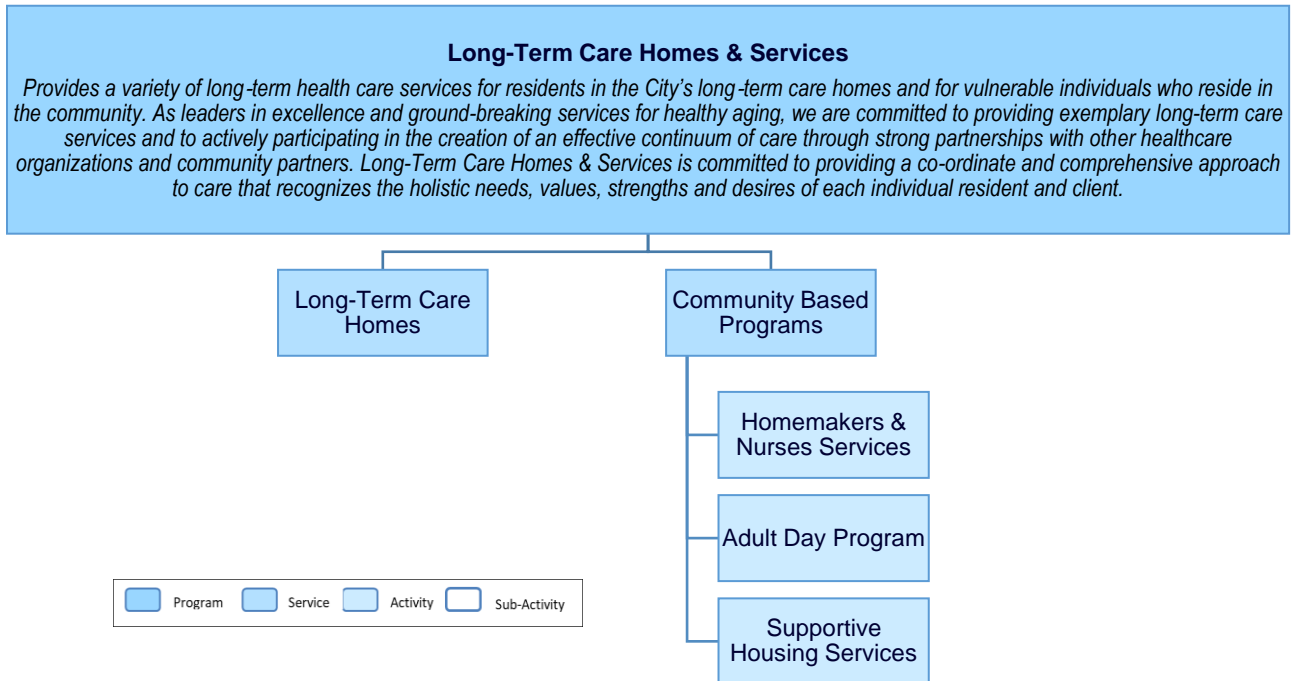


WHAT WE DO



WHO WE SERVE

Long-Term Care Homes

- Residents
- Persons recovering from surgery or illness
- Persons requiring respite
- Family Caregivers (short-stay)
- Staff & Volunteers

Beneficiaries

- Family Members & Partners
- Healthcare Partners
- Local Health Integration Networks
- Ministry of Health & Long-Term Care

Community Based Programs

- Frail Seniors
- Persons (adults) with Disabilities
- Persons with chronic illness over the age of 59 years

Beneficiaries

- Family Members & Partners
- Toronto Public Health
- Housing Providers, including Toronto Community Housing
- Healthcare Partners
- Local Health Integration Networks
- Ministry of Health & Long-Term Care