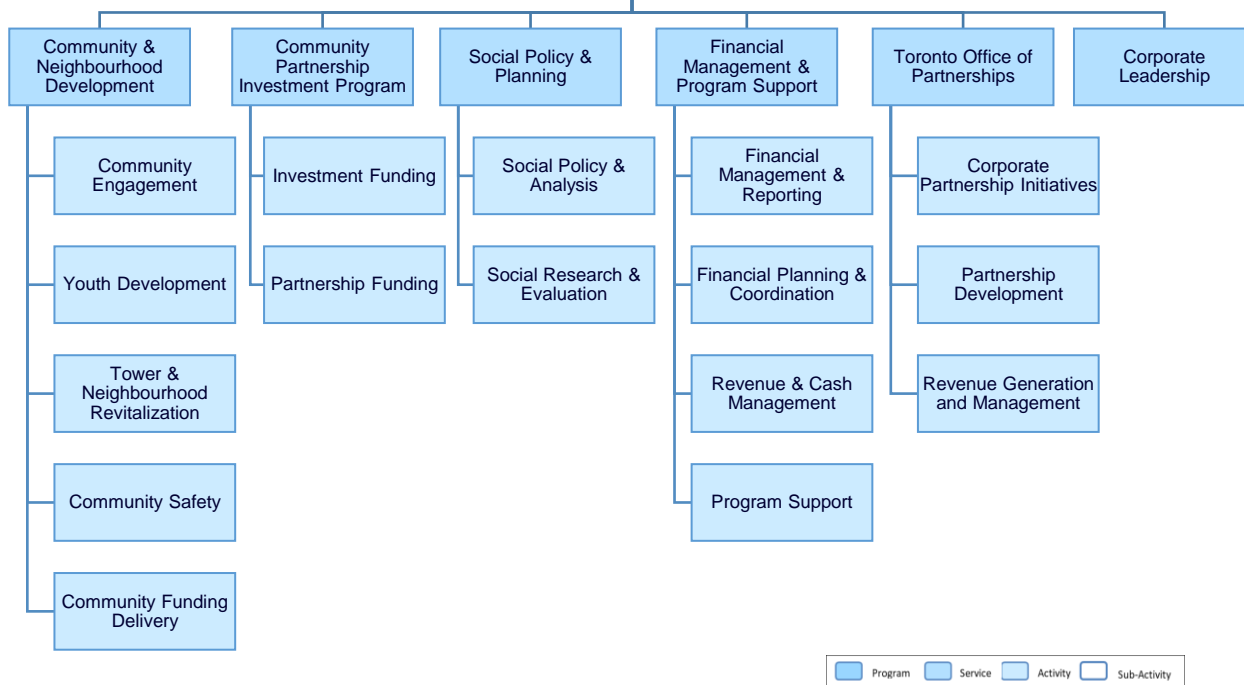


## WHAT WE DO

### Social Development, Finance & Administration

The Program provides leadership on the City's social inclusion and community safety agenda of building safe, strong neighbourhoods and communities. Through internal, inter-governmental and community partnerships, the Program leads integrated service planning and delivery, and responds to other community social needs through social policy research and analysis, to improve individual and neighbourhood outcomes. The Division provides financial and program support and oversight, to operating programs to ensure Cluster A objectives are met.



## WHO WE SERVE

### Community & Neighbourhood Development

- City Programs & Agencies
- Community Service Providers/Groups
- Employers
- Families
- Members of Council
- Neighbourhoods
- Other Orders of Government/ Funding Sources
- Residents
- Youth

### Social Policy & Planning

- City Manager
- City Programs under Community and Social Services
- Communities/ public
- Deputy City Manager
- Mayor/Council

### Financial Management & Program Support

- Corporation
- Deputy City Manager
- Taxpayer/Public
- City Manager

### Toronto Office of Partnerships

- Philanthropists
- Priority Neighbourhoods
- Charitable Organizations
- Non-Government Organizations
- Other orders of government

### Corporate Leadership (DCM)

- City Programs under Community and Social Services
- Toronto Public Health