



David A Balfour Park Rosehill Reservoir Rehabilitation

March 26, 2019



Title page including project team consultants

Agenda

Doors Open	6:30pm – 7:00pm
Welcome and Introductions	7:00pm – 7:05pm
Councilors Matlow and Layton	7:05pm – 7:15pm
Rosehill Vision Committee	7:15pm – 7:20pm
Presentation of Design followed by	
Question & Answer	7:20pm – 8:15pm
Visit Display Boards and	
Speak with Staff	8:15pm – 9:00pm

An agenda for the evening meeting and includes a presentation by the consultants and a period for residents to ask questions and receive answers from consultants and staff.

Meeting Ground Rules

- As the facilitator, my purpose is to ensure we have a good meeting, stay on topic, on time with the agenda and finish on time
- Please show decorum and respect to both your neighbours and staff. We want to create a safe environment at this meeting to respect all opinions and feedback
- One speaker or discussion at a time, please
- Please hold all questions until after the presentation

A brief reminder for everyone at the meeting to ensure that as many voices as possible are heard and respected.

Welcome and Introductions

Introductions

- City Team:
 - Engineering & Construction Services
 - Toronto Water
 - Parks, Forestry & Recreation
 - Heritage Preservation Services
- Rosehill Vision Committee
- Councilors:
 - Mike Layton – Ward 11
 - Josh Matlow – Ward 12
- Consultant Team:
 - Associated Engineering
 - Brown & Storey Architects
 - Brodie & Associates Landscape Architects

A list of City of Toronto divisions, local councillors, consultant team and local advisory group. All contributed in the design process for the park.

Why We Are Here Tonight

- Provide update and overview on David A. Balfour Park/Rosehill Reservoir park and landscape design
- Get your input on design and answer questions

The purpose of tonight's meeting includes presenting an update on the park design and its features, and seeking feedback and questions from residents.

Park Design and Landscape Vision



A 3D view of the park looking north east. A few key highlights from this rendering includes:

- an upper perimeter pathway
- large open green field space on top of the reservoir
- three seating features with an arbor or trellis, with one located on the west side, south side and east side of the park

New Park over Rosehill Reservoir



A plan overview of the park design and photos of various trees and plantings that will be added into the park. The next set of slides will go into further detail of the various park features.

Park Areas



1. Ravine Edge
2. Entrance Nodes
3. Savannah
4. North Embankment
5. Perimeter Planting
6. Little Park
7. Plateau
8. Public Washroom
9. Rosehill Garden

A map of the park areas and key focus points of the design.

Tree Canopy



A guiding principle in the park design is to preserve as much of the existing tree canopy as possible. Some of the park features were slightly adjusted to help preserve trees or move towards trees that are determined to be unhealthy, very young, near the end of life, or an invasive species. Trees will not be replanted on top of the reservoir or its slopes.

The green spots on the map indicate existing trees.
 Blue spots indicate existing memorial trees.
 Orange spots indicate new large trees.
 Purple spots indicate new small trees or shrubs.

Photos of tree species include: Catalpa, Pagoda Dogwood, Black Locust, White Pine, Ohio Buckeye.

Plantings – Ravine Edge



At the ravine edge located towards the ravine below the lower perimeter pathway, additional plantings and trees will be provided.

Photos of tree species include: Red Oak, Tulip Tree, Pagoda Dogwood, White Pine, Witch Hazel, Nannyberry.

Plantings – Savannah



The area called the savannah runs around the west, south and east side of the reservoir between its slope and the lower perimeter pathway.

Photos of additional trees include: Black Locust, Basswood, Serviceberry, Redbud.

Plantings – North Embankment



New tree and shrub planting along the north side of the reservoir between Rosehill Avenue and the slope of the reservoir.

Photos of new tree plantings include: Fragrant Sumach Shrub, Dawyck Green Beech, Serviceberry.

Plantings – Perimeter Planting



Plantings along the perimeter edge of the park along the west, south sides and the west side of Little Park/Summerhill Entrance.

Photos of trees include: Kentucky Coffee Tree, Basswood, Ninebark, Ohio Buckeye.

Plantings – Little Park



Plantings in Little Park/Summerhill Entrance include: Redbud, Catalpa, Pagoda Dogwood.

Lower Walkway, Paths and Lighting



The Lower perimeter pathway will be replaced. It will be approximately 1.8 metres wide and slightly narrowed in some locations to preserve trees wherever possible. The material of the walkway is power washed concrete. New light poles will be installed along this pathway.

Upper Service Road and Paths



The upper perimeter pathway will be replaced. Additional connections to this pathway include two sloping ramps from Rosehill Avenue, and a pathway from the Avoca Avenue entrance that goes to the washroom and continues around the east side of Rosehill Garden and down the slope towards the Valve House. There is an additional connection pathway from the washroom to the playground.

This pathway is about 1.2 metres wide.

The park design includes benches and garbage and recycling bins. The proposed garbage and recycling enclosure will have a small fence on two sides to add visual interest.

Avoca Entrance Node



The entrance node at Avoca Avenue will connect with

- the lower perimeter pathway on Rosehill Avenue
- the upper perimeter pathway that crosses the reservoir
- the lower perimeter pathway towards the washroom

The features at this node include:

- A City of Toronto Park sign
- seating
- two lighting poles
- two bollards to prevent vehicle access and allow parks operations vehicles access to the parks yard and washroom
- bike rings
- an installation of one of the reservoir's large valves to showcase the heritage and legacy of the reservoir and its functions

Rosehill Entrance Node



The entrance node at Rosehill Avenue at the north west corner will connect to:

- the lower perimeter pathway that runs along the west side of the park
- one of the ramps leading up to the top of the reservoir for maintenance vehicle access

The design includes:

- alternating concrete and asphalt tread on the ramp
- a planting features next to the ramp
- bench
- garbage
- lighting
- bike rings
- bollards to prevent vehicle access and provide maintenance access
- protecting the mature elm tree

Jackes Entrance Node



The entrance node at Jackes will connect

- to the lower perimeter pathway along the west side of the park
- stairs leading up to the upper perimeter pathway

The stairs will be widened and the original hand rail will be replaced as a heritage feature. At this location, the following park elements include:

- bike rings
- garbage and recycling bins
- a bench at the top of the stairs
- an arbor or trellis covering 5 benches next to the upper perimeter pathway. The benches will face east.

Valve House Entrance Node



The node at the Valve House will connect:

- to the pathway in Little Park/Summerhill Entrance
- to the lower perimeter pathway towards the playground
- to the lower perimeter pathway towards Rosehill Garden with alternating concrete and asphalt treads
- to the lower perimeter pathway along the west side of the park
- stairs to the upper perimeter pathway

At the top of the stairs, a trellis or arbor will be provided with 7 benches on the upper perimeter pathway.

The exteriors of the Valve House and Access House will be restored.

Summerhill Entrance



The entrance at Summerhill Avenue will connect:

- the lower perimeter pathway north to the top of the reservoir
- a diagonal pathway from the south west corner towards Summerhill Gardens

Park features at the south end of Little Park/Summerhill entrance include:

- A City of Toronto parks sign
- garbage and recycling bins
- bench
- memorial stone
- drinking water fountain with a lower bowl for dogs and attachments for hoses
- the community bulletin board and book exchange
- additional shrub plantings

Woodlawn/Summerhill Gardens Link



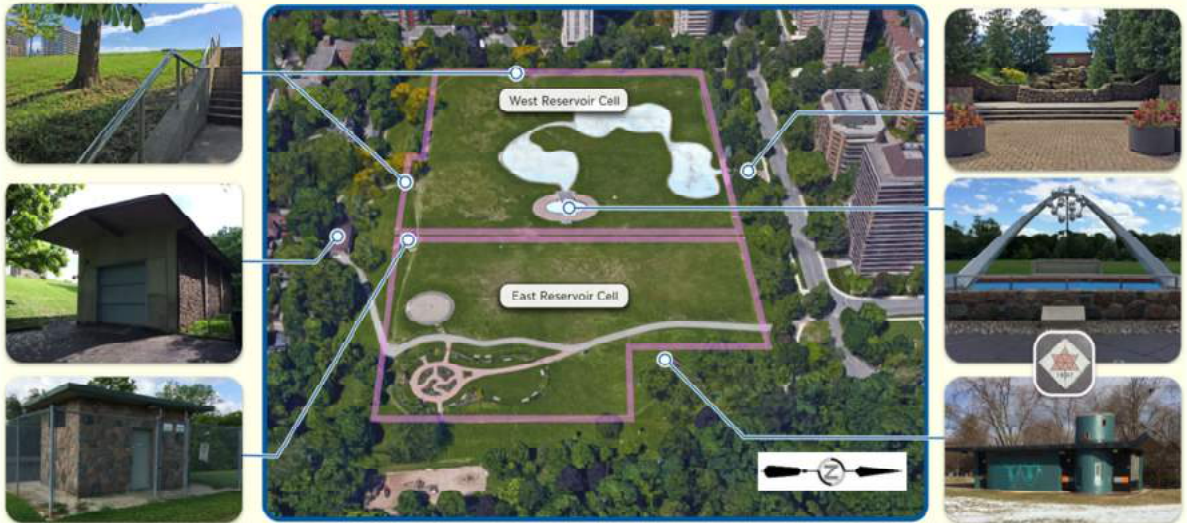
In the mid-section of Little Park/Summerhill entrance will connect:

- the lower perimeter pathway to the top of the reservoir
- a slightly south east diagonal path from Woodlawn Avenue to Summerhill Gardens
- a short cut from Woodlawn to the lower perimeter pathway

Park features in the mid-section of Little Park/Summerhill entrance include:

- garbage and recycling bins
- an installation of one of the reservoir's large valves to showcase the heritage and legacy of the reservoir and its functions

Heritage Elements to be Respected



The park includes a number of key heritage features to be protected or reflected in the new design. The following heritage features will be respected in the park design

- the handrail at the stairs of Jackes Avenue
- the Access House
- the Valve House

The following heritage features will be removed and/or replaced:

- the public washroom will be replaced and reflect the original building's concept and shape
- the cascading, rocky water feature will be replaced with a water fountain (see the next two slides)
- the water molecule located at a shallow pool will be integrated with the water feature on Rosehill Avenue

Centennial Monument and Water Feature



The centennial monument and water feature will be replaced in the same location between the Avoca Avenue and Rosehill entrance at the north west corner.

- The water fountain will include a shallow pool and the water molecule will overhang from a landing above.
- Steps will lead from Rosehill Avenue and include a bench and dense plantings.
- The ramp from the north west corner will connect to the upper perimeter pathway behind the water molecule.
- A ramp from the first set of stairs will connect to the upper perimeter pathway towards Avoca

Centennial Monument and Water Feature



A view of the centennial monument and water feature looking west.

Plateau Trellises



Three locations along the upper perimeter pathway will have benches covered by a trellis. The location of these trellis are at the east, south and west side of the park.

Public Washroom



The washroom will be replaced and reflect the original architecture. The lower perimeter pathway from Avoca Avenue will connect to the washroom building. Additional benches will be provided below the roof of the building.

The building includes:

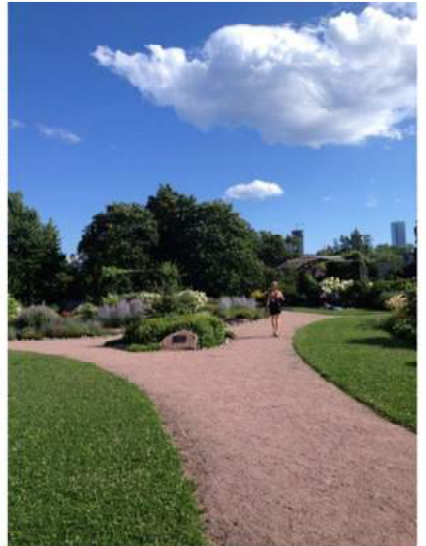
- two public washroom stalls
- a family stall with change table
- a space for the Rosehill Garden Volunteers to store their equipment

Rosehill Garden



Rosehill Garden will be replaced. The lower perimeter pathway will go around the west side of the garden from the washroom towards the Valve House.

Rosehill Garden



An aerial view of the original Rosehill Garden and photos of some of the plantings.

Construction Status Update

Existing Infrastructure



A map of the reservoir's underground infrastructure.

Infrastructure Rehabilitation in Progress



Photos of construction work. Two interior photos showing the basin and the large columns holding up the roof of the reservoir. A third photo showing an additional valve chamber was built near Rosehill Avenue. A fourth photo showing a trench dug about 1 metre below the roof of the reservoir to install drainage and expose the roof.

Infrastructure Rehabilitation in Progress



Additional construction photos. One photo showing the activities around the Valve House. Two photos showing the chamber and piping work. A third photo showing the trench along the south side of the basin. The fourth photo shows the tree root excavation where an air spade removed the soil around the tree roots for arborists to assess the conditions of trees. Tree roots are not damaged in the process.

Schedule Update

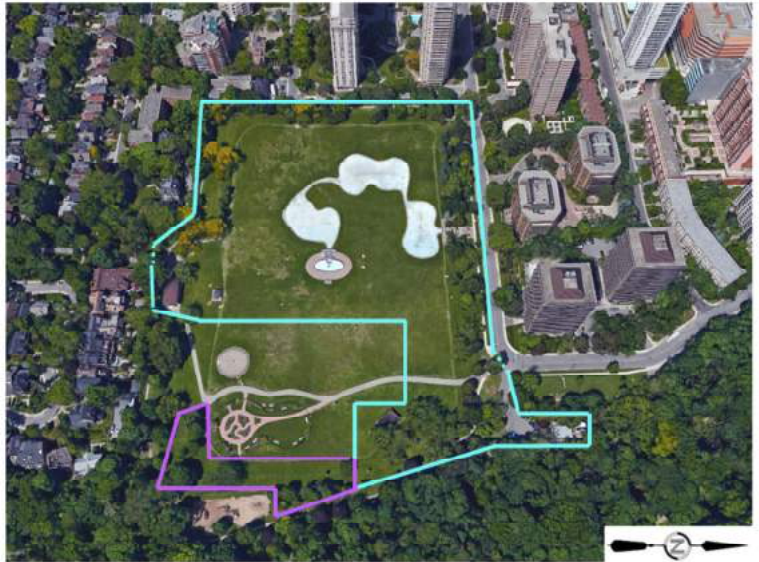
- Phase 1: May 2018 to July 31, 2019



An update to the construction schedule. This map shows the existing hoarding for Phase 1 from May 2018 to July 31, 2019.

Schedule Update

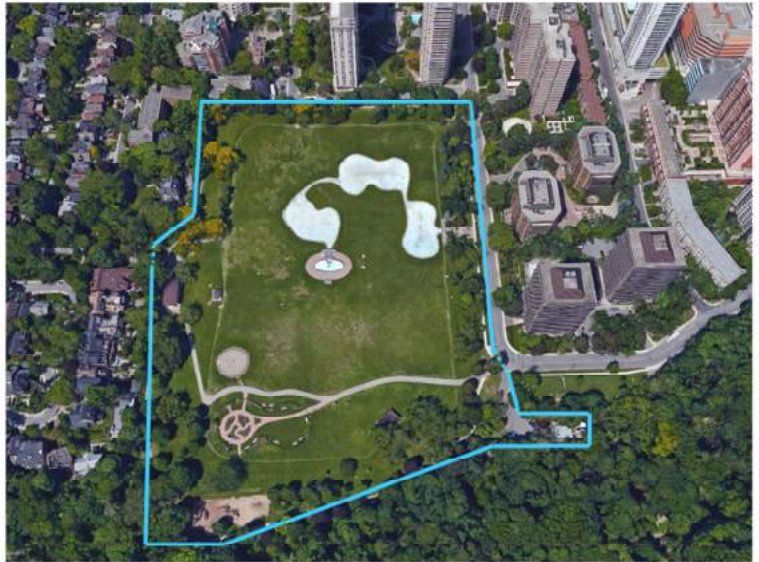
- Phase 1: May 2018 to July 31, 2019
- Phase 2A: March 27 to July 31, 2019



This map shows Phase 2A in purple which will begin March 27, 2019 to July 31, 2019.

Schedule Update

- Phase 1: May 2018 to July 31, 2019
- Phase 2A: March 27 to July 31, 2019
- Phase 2B: Aug. 1, 2019 to Spring 2021



Phase 2B (or the original phase 2 in the March 2018 construction notice) will close the entire park from August 1, 2019 to Spring 2021.

This project is on track. for completion by Spring 2021. .

Get Involved

There are a number of ways that you can participate in the Rosehill Reservoir Rehabilitation project and stay updated:

- Fill out a feedback form or speak with staff tonight
- Submit comments by **April 5, 2019**
- Request to be added to the project email list to receive updates
- Visit the project website for information and updates:

www.toronto.ca/rosehill

Contact: Kate Kusiak, Sr. Public Consultation Coordinator

rosehill@toronto.ca

Please provide your feedback by Friday April 5, 2019. Questions from the comment form will be available on the project webpage. Please contact Kate Kusiak, Public Consultation staff with any questions or concerns.

