

- **Network of Connections:**

- Create and improve connections between existing and new parks and open spaces, and between the *Avenue* and the parks and open spaces;
- Create publicly-accessible spaces on private lands through POPS, increased setbacks, etc., to contribute to the larger network;
- Enhance connections in and to existing natural features such as the Hydro corridor and Massey Creek;
- Create east-west and north-south open space connections through series of parks and open spaces linked by public streets.

- **Variety:** Provide a variety of parks of different sizes, functions, and programming opportunities, and design parks for all ages and all seasons.
- **Parks for All:** Parks shall be designed for all ages and all seasons.
- **Parks within Walking Distance:** Locate parks within walking distances (500m) from existing and new communities, with safe, convenient, and comfortable, pedestrian access without crossing arterial roads.
- **Parks with Public Street Frontages:** Parks shall have generous frontages on public streets.
- **Programmable Parks:** Parks shall be developed to ensure programmability.
- **Achieving Parks in Early Phases of Development:** Parkland dedication to be achieved in early phases of developments.

6. A South Park Connecting the New and Existing Communities
7. Employment Parks
8. An East Park
9. Birchmount Park Connecting the *Avenue*, Existing *Employment Areas*, and Massey Creek
10. A Golden Mile Community Centre
11. A Golden Mile School
12. Connections / Improvements to Massey Creek
13. An East-West “String of Pearls”
14. North-South Green Connections to the Meadoway

4 Fourteen (14) Potential Big Moves For Parks And Open Space In The Golden Mile

The fourteen potential big moves are as follows (Figure 20):

1. A Central Park
2. A Green Eglinton
3. The Meadoway by the Golden Mile: Hydro Corridor as a People Place (Figure 18 / Figure 19 / Figure 22)
4. Eglinton Square Park as the soul of the Community (Figure 21)
5. A West Park Connecting the Avenue to the Meadoway

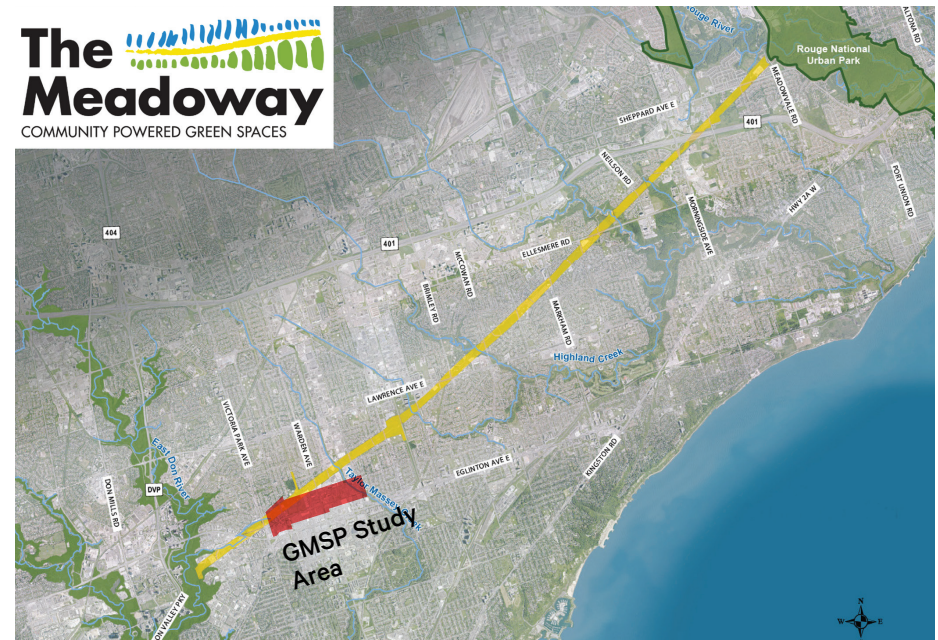


Figure 18 Aerial Map of The Meadoway (source: The Meadoway)



Figure 19 Existing Conditions of Gatineau Hydro Corridor (source: SvN)

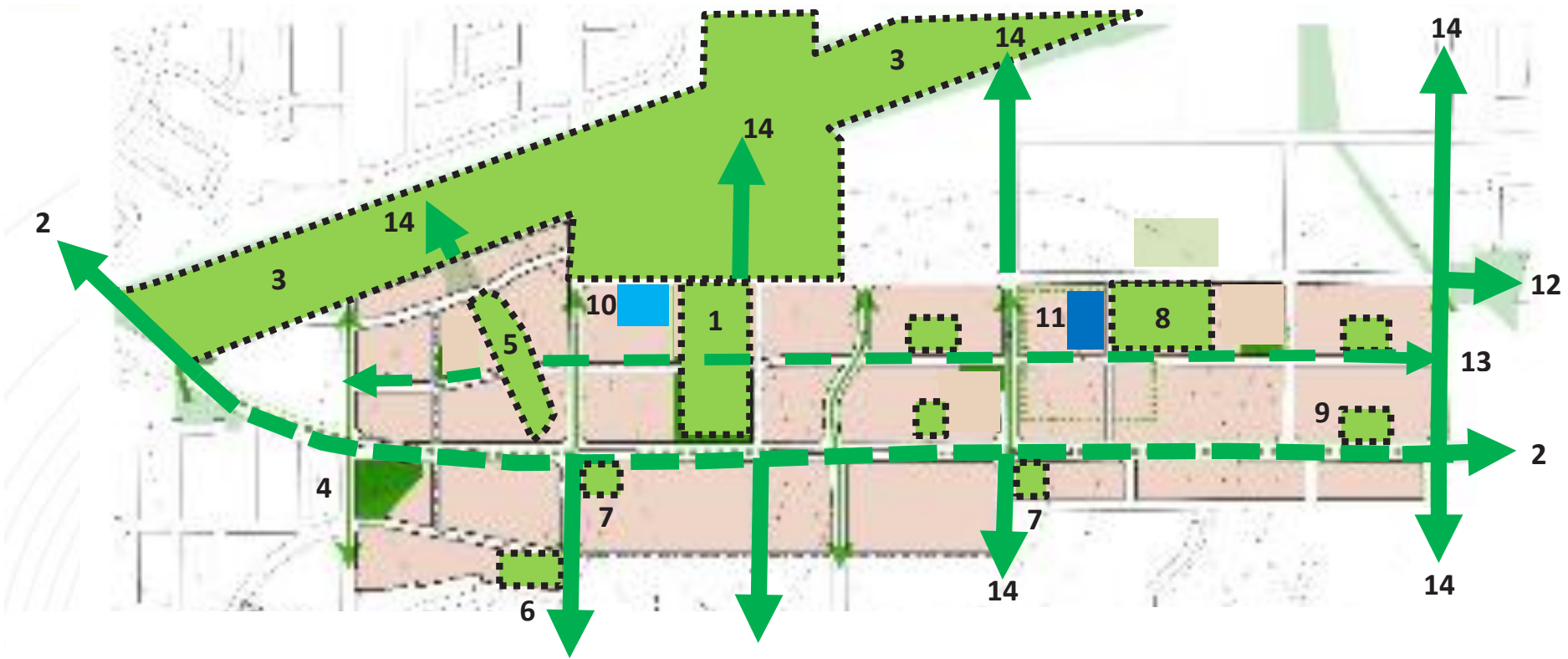


Figure 20 14 Big Moves (source: City of Toronto)



Figure 21 Existing Condition of Victoria Park-Eglinton Parkette
(source: SvN)



Figure 22 Existing Conditions of Ashtonbee Reservoir Park
(source: SvN)

Together, these four factors led to the development of three Parks and Open Space Network Alternatives that would provide between 10-13 hectares of .Large parks as community focal points for new residential districts;

- Connections from Eglinton Avenue East to Ashtonbee Park; and,
- East-west connectivity between the large parks through a new east-west street north of Eglinton Avenue East with an enhanced, green boulevard.

Further, these three Alternatives featured the following defining components:

- **ALTERNATIVE A:** smaller Neighbourhood Parks and Parkettes dispersed throughout the GMSP Study Area (Figure 23)
 - Features many smaller Neighbourhood Parks and Parkettes

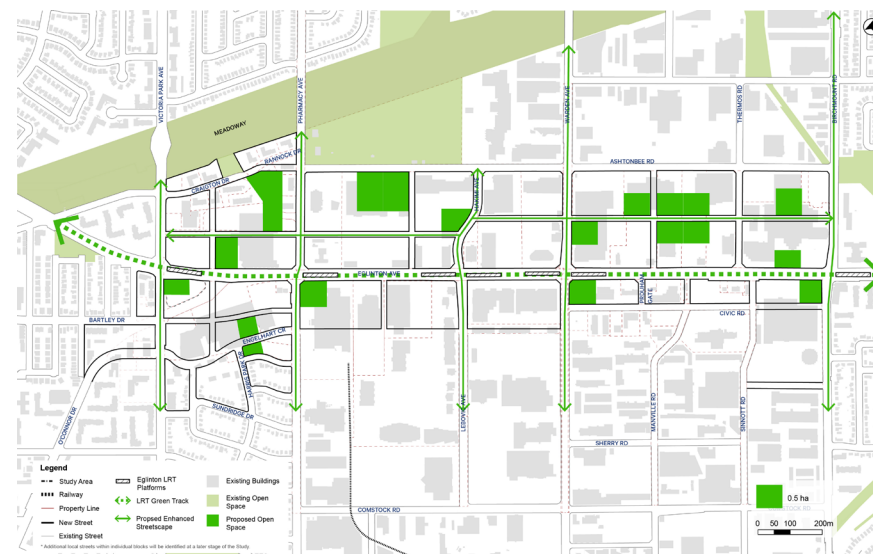


Figure 23 Parks and Open Space Network
Alternative A

- Provides a greater number of and easier access to parks throughout the GMSP Study Area
- Provides limited variation in potential programming due to similarity in size of parks
- **ALTERNATIVE B:** two Community/large Neighbourhood Parks (Central Park and East Park), supported by smaller Neighbourhood Parks and Parkettes (Figure 24)
 - Features several north-south open space connections between Eglinton Avenue East and Ashtonbee Road / The Meadoway
 - Provides a lower level of access to parks than Alternative A due to lower level of distribution across the GMSP Study Area

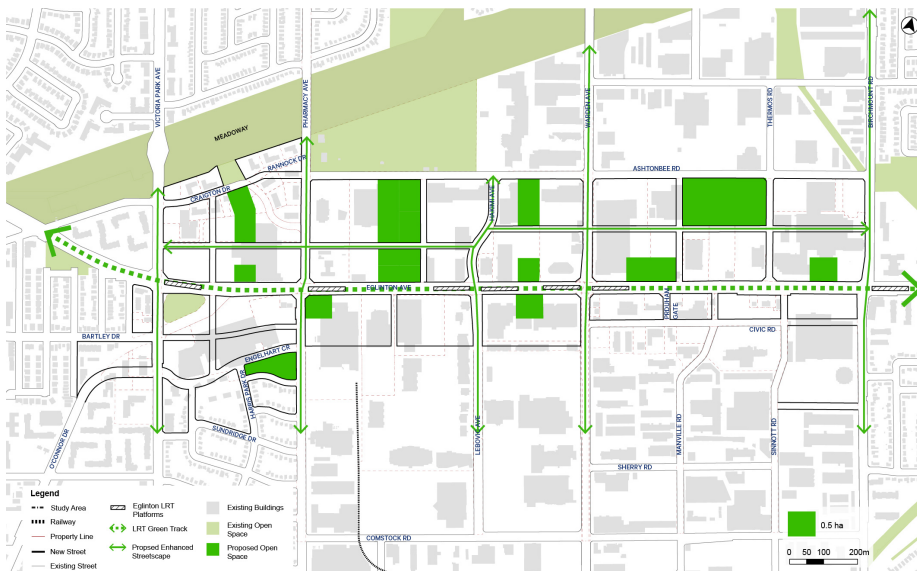


Figure 24 Parks and Open Space Network Alternative B

- Provides both large and small parks to support a variety of programming
- **ALTERNATIVE C:** linear Community Park supported by smaller Neighbourhood Parks and Parkettes (Figure 25)
 - Features a series of linear parks that create an east-west open space connection throughout the GMSP Study Area, both north and south of the potential east-west street between Eglinton Avenue East and Craigton Drive / Ashtonbee Road.
 - Provides good access to parks as a result of location / distribution of potential parkland
 - Provides limited variation in potential programming due to similarity in size of parks

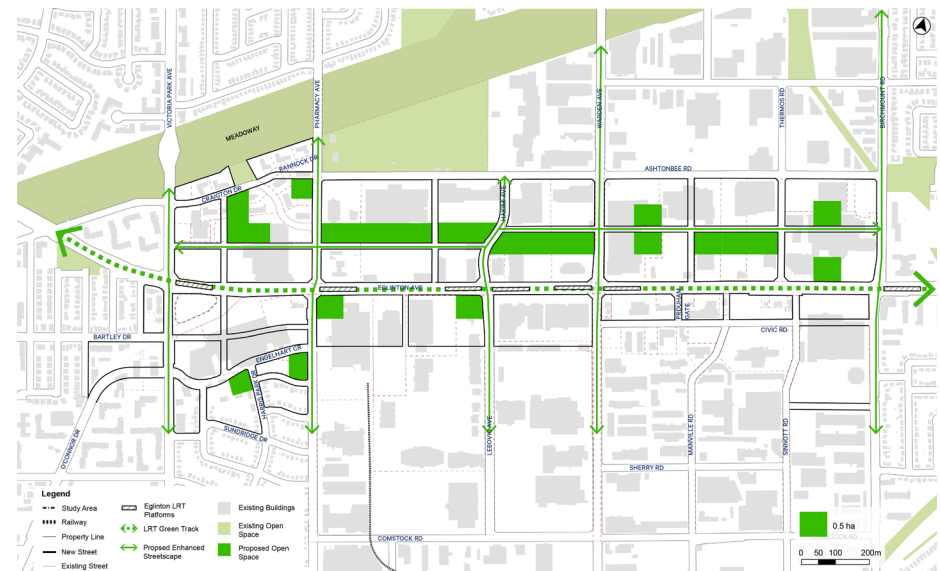


Figure 25 *Parks and Open Space Network Alternative C*

Based on its ability to best achieve the 9 emerging principles and 14 big moves for parks and open space within the Golden Mile, Alternative B was carried forward as the Emerging Preferred Parks and Open Space Network (Figure 26 / Figure 27). This Alternative provided for two large Community Parks in the Central Park and East Park, two significant Neighbourhood

Parks in the West Park and South Park, and a string of smaller Neighbourhood Parks and Parkettes across the GMSP Study Area. It also provided for strong connections to the Meadowway from Eglinton Avenue East and a frequency of parkland along the potential future east-west street between Eglinton Avenue East and Craigton Drive / Ashtonbee Road.

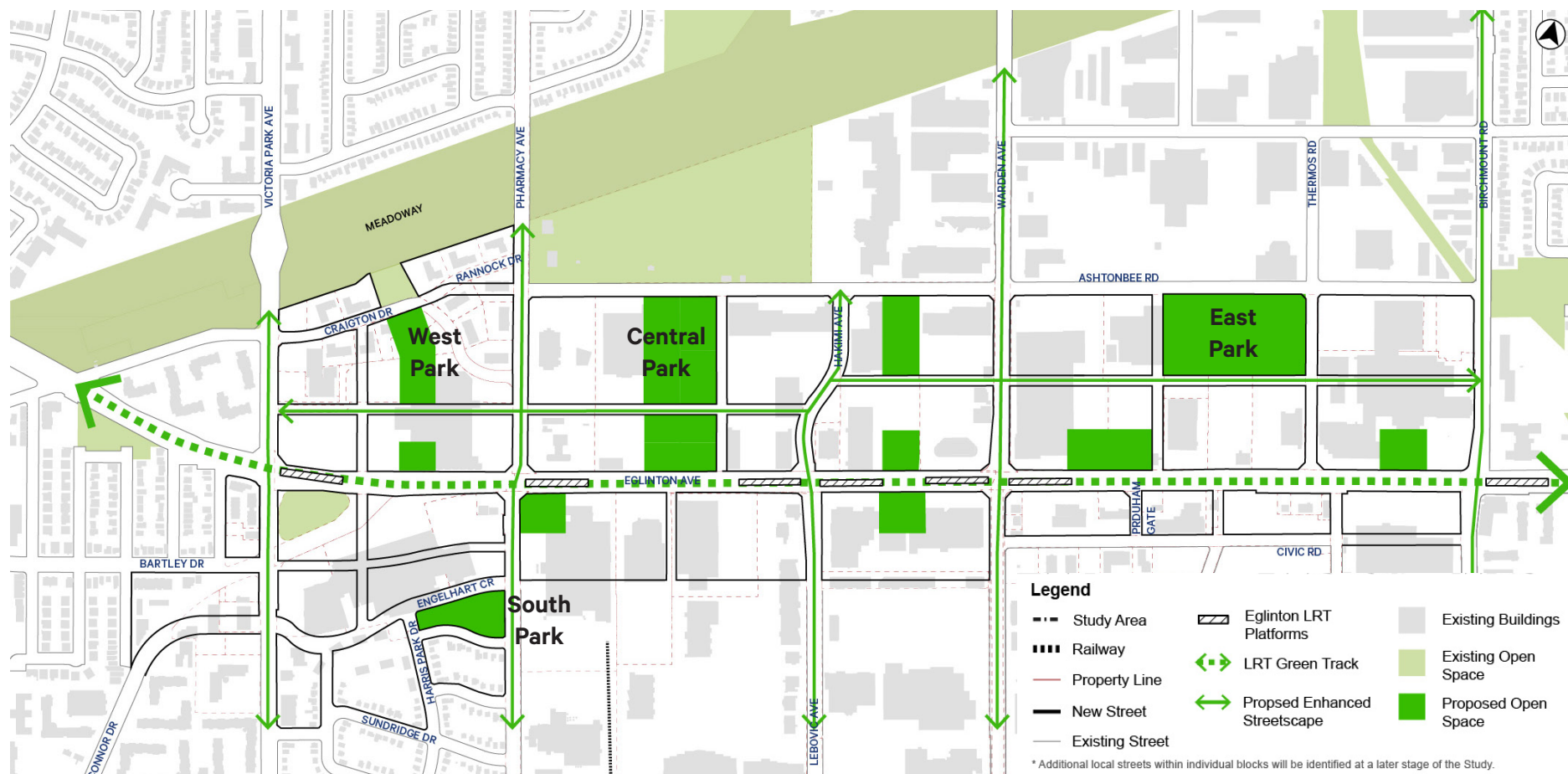


Figure 26 Emerging Parks and Open Space Network

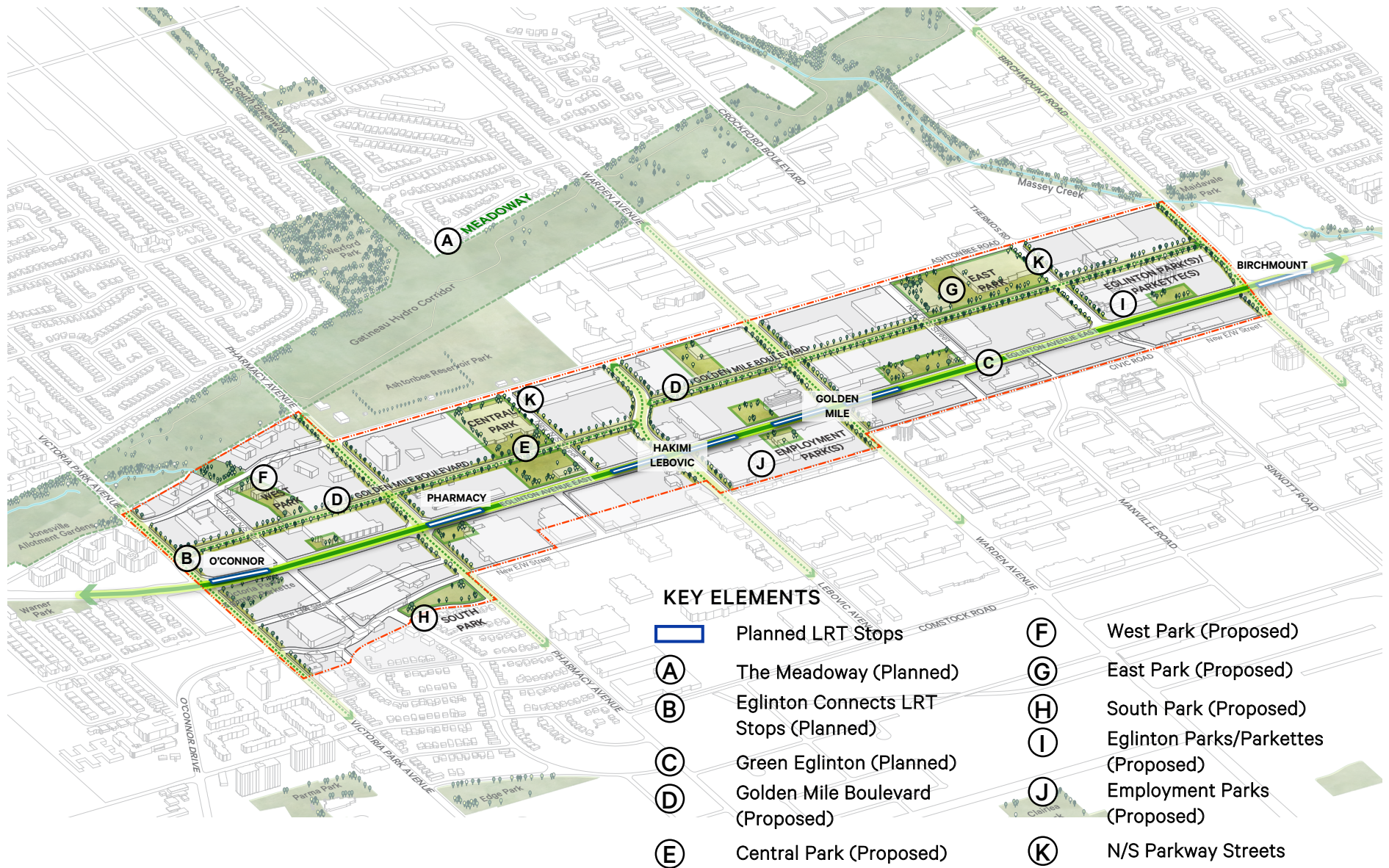


Figure 27 Axonometric View of the Emerging Parks and Open Space Network