



THE VU 112-116 GEORGE ST

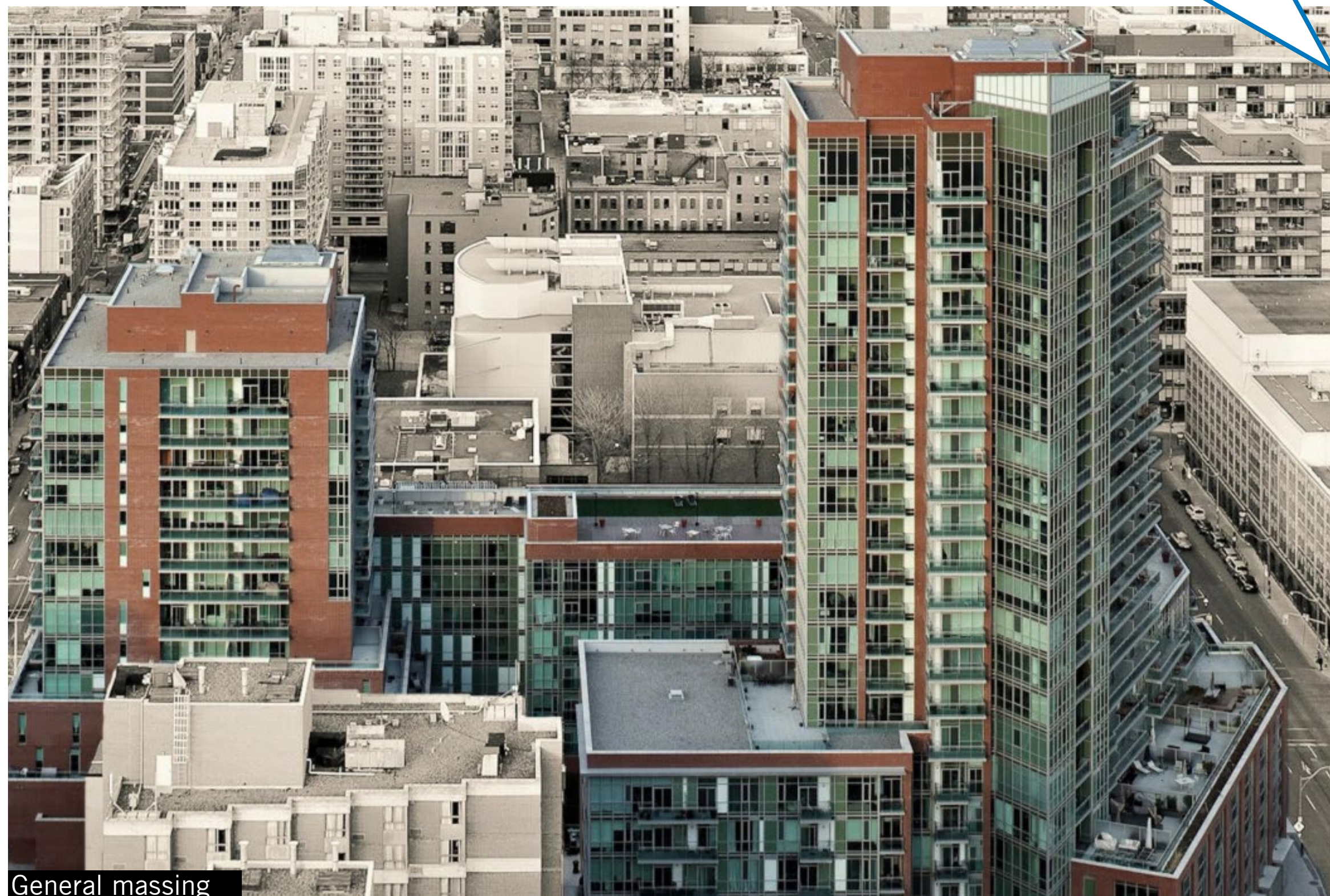
COMPLETION: 2009

PERKINS+WILL

What do you like
about this building?
What do you dislike?



LOCATION



General massing



THE VU 112-116 GEORGE ST

COMPLETION: 2009

PERKINS+WILL

What do you like
about this building?
What do you dislike?



View from Adelaide St E looking north



THE VU 112-116 GEORGE ST

COMPLETION: 2009

PERKINS+WILL

What do you like
about this building?
What do you dislike?



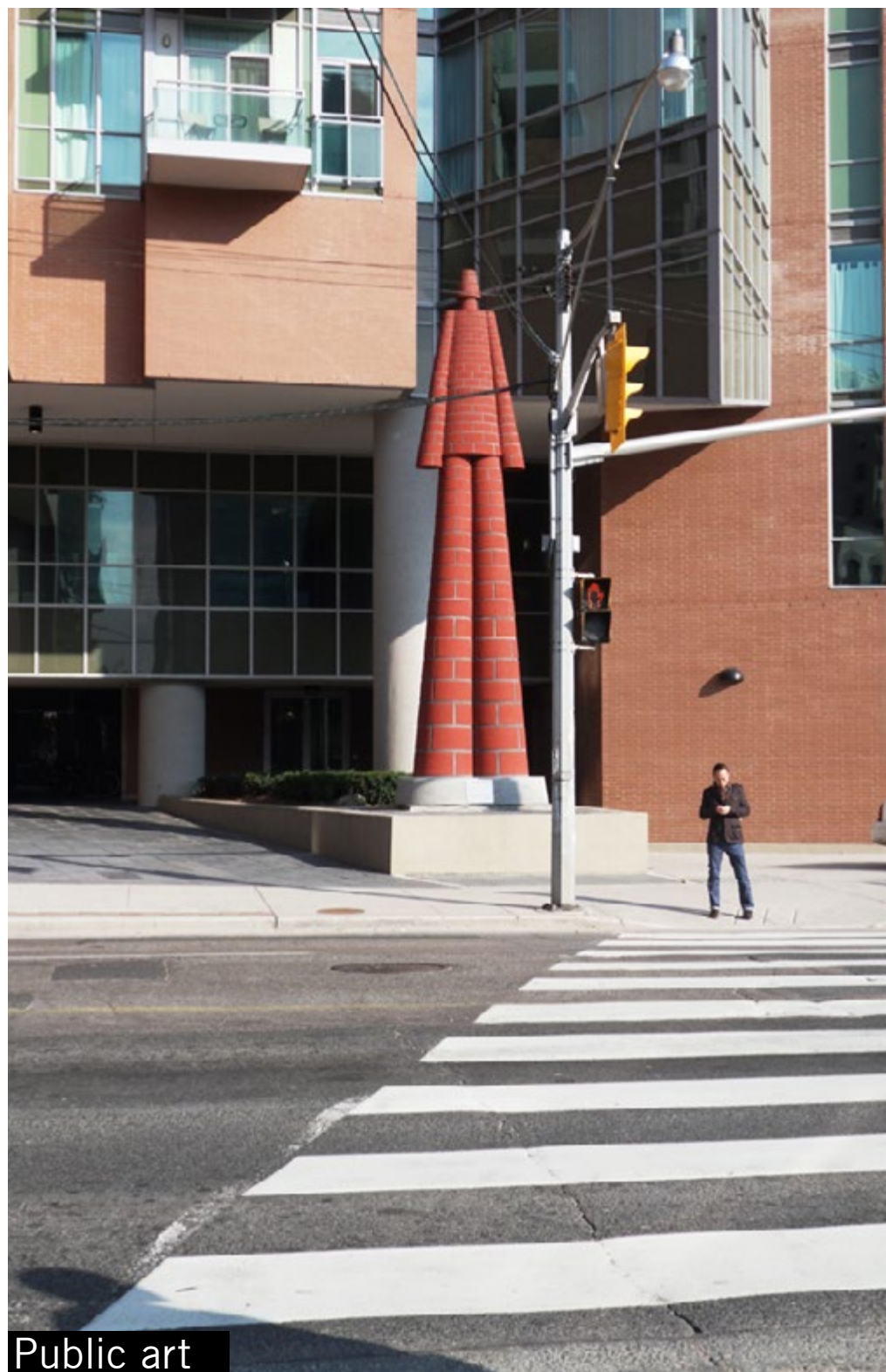


THE VU 112-116 GEORGE ST

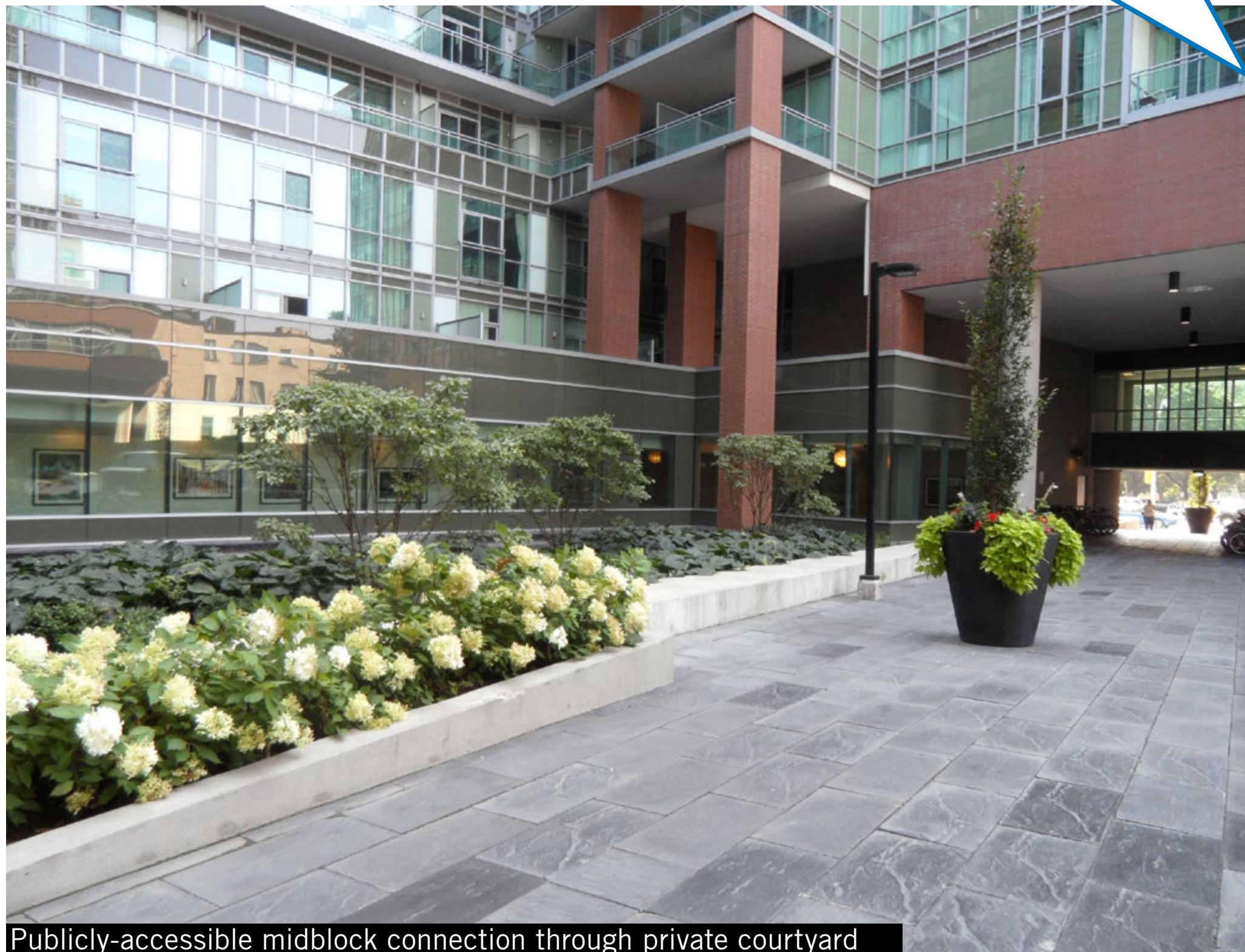
COMPLETION: 2009

PERKINS+WILL

What do you like
about this building?
What do you dislike?



Public art



Publicly-accessible midblock connection through private courtyard



THE VU 112-116 GEORGE ST

COMPLETION: 2009

PERKINS+WILL

What do you like
about this building?
What do you dislike?



View from Jarvis St looking north



THE VU 112-116 GEORGE ST

COMPLETION: 2009

PERKINS+WILL

What do you like about this building?
What do you dislike?



View from Adelaide St E looking east

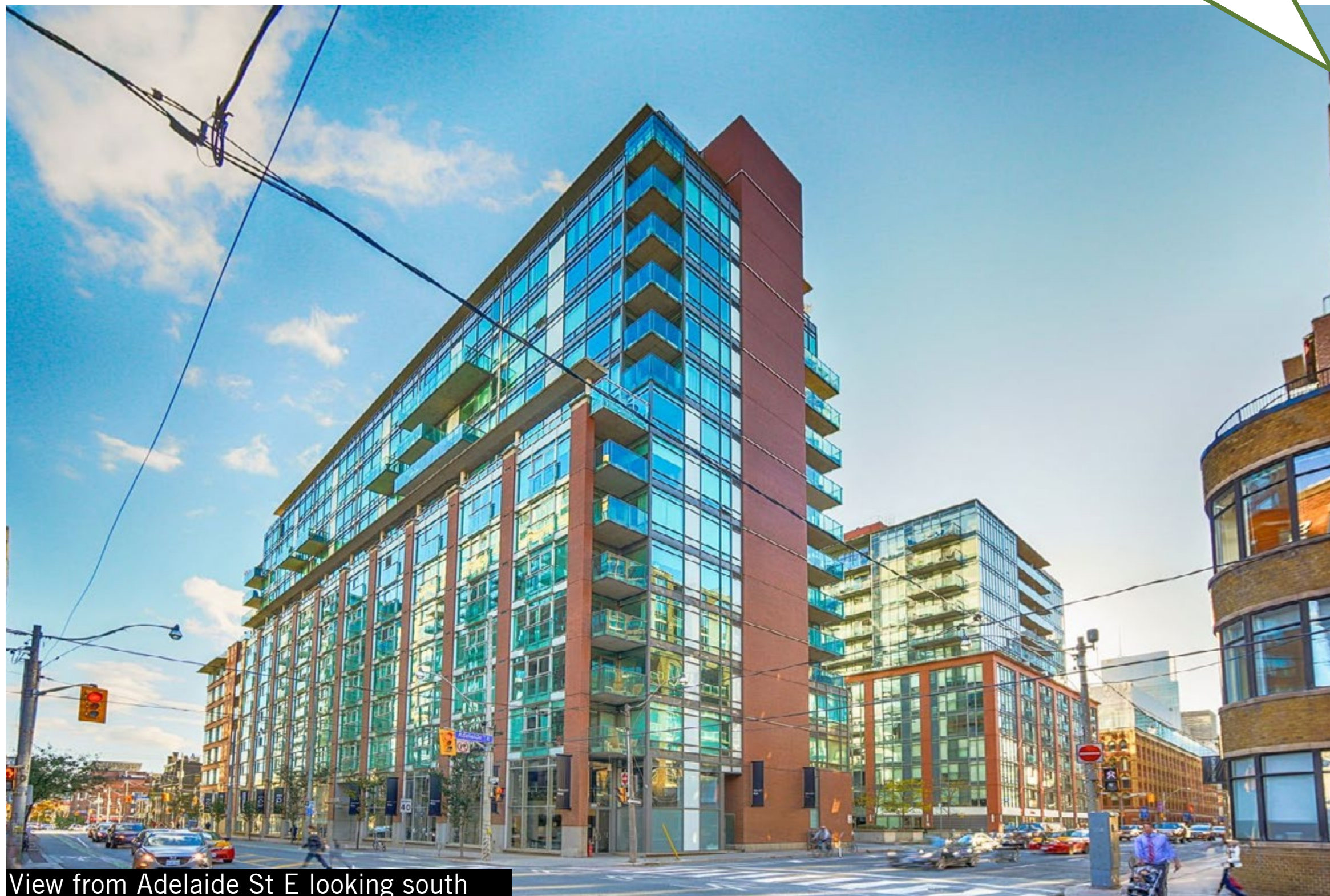


MOZO LOFTS 333 ADELAIDE ST E

COMPLETION: 2004

PERKINS+WILL

What do you like
about this building?
What do you dislike?



View from Adelaide St E looking south



MOZO LOFTS 333 ADELAIDE ST E

COMPLETION: 2004

PERKINS+WILL

What do you like
about this building?
What do you dislike?



Open space and servicing area



MOZO LOFTS 333 ADELAIDE ST E

COMPLETION: 2004

PERKINS+WILL

What do you like
about this building?
What do you dislike?



Retail and building entrances



MOZO LOFTS 333 ADELAIDE ST E

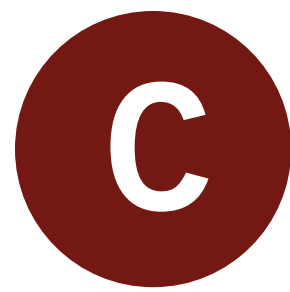
COMPLETION: 2004

PERKINS+WILL

What do you like
about this building?
What do you dislike?



Aerial View



THE GLOBE AND MAIL CENTRE 351 KING ST E

COMPLETION: 2017

PERKINS+WILL

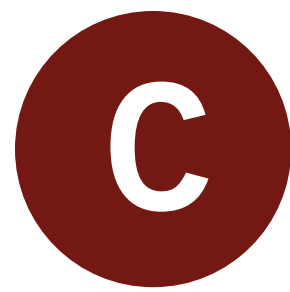
What do you like
about this building?
What do you dislike?



LOCATION



Building entrance



THE GLOBE AND MAIL CENTRE 351 KING ST E

COMPLETION: 2017

PERKINS+WILL

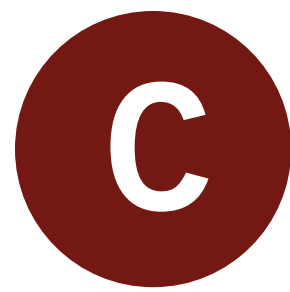
What do you like
about this building?
What do you dislike?



View along King St E looking east



View along King St E looking west

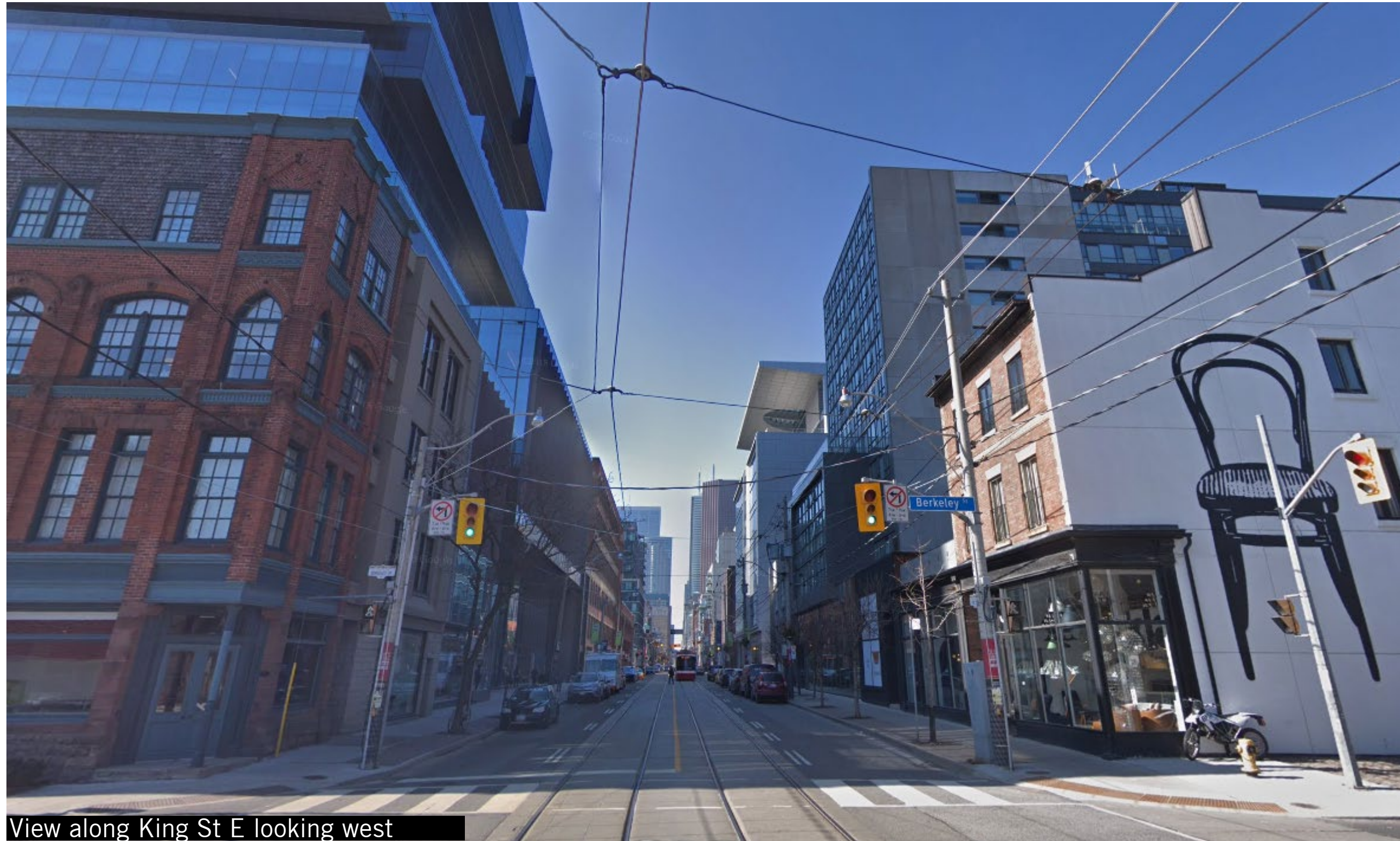


THE GLOBE AND MAIL CENTRE 351 KING ST E

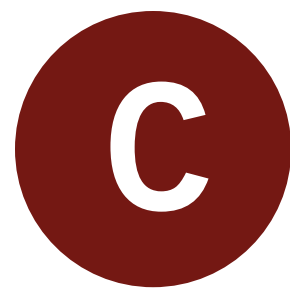
COMPLETION: 2017

PERKINS+WILL

What do you like
about this building?
What do you dislike?



View along King St E looking west



THE GLOBE AND MAIL CENTRE 351 KING ST E

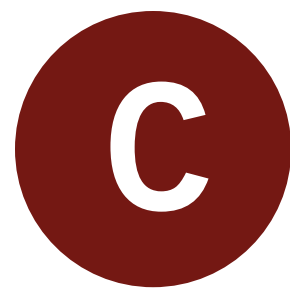
COMPLETION: 2017

PERKINS+WILL

What do you like
about this building?
What do you dislike?



View along King St E looking west



THE GLOBE AND MAIL CENTRE

351 KING ST E

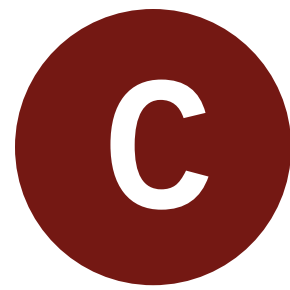
COMPLETION: 2017

PERKINS+WILL

What do you like
about this building?
What do you dislike?



View along King St E looking west

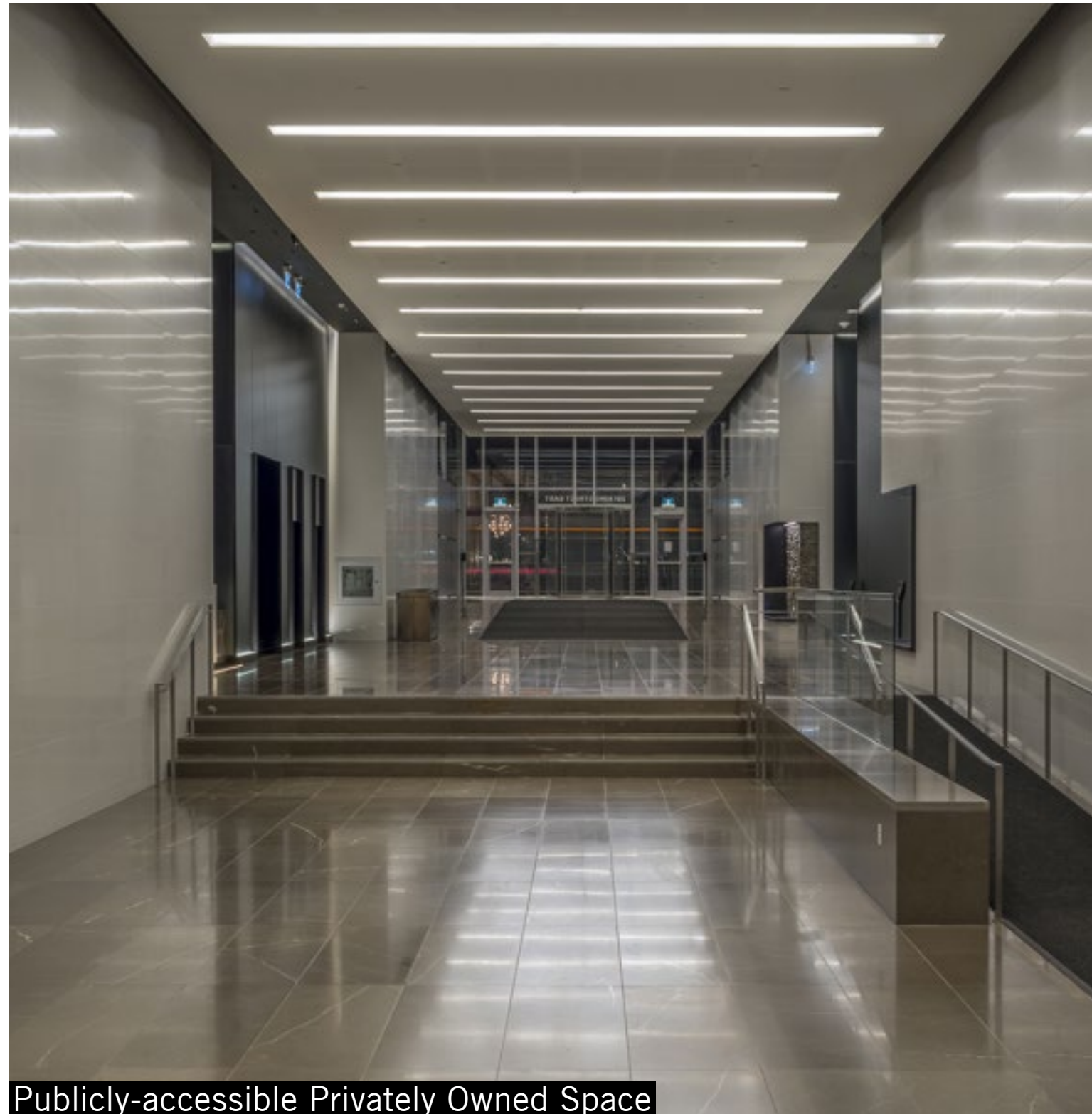


THE GLOBE AND MAIL CENTRE 351 KING ST E

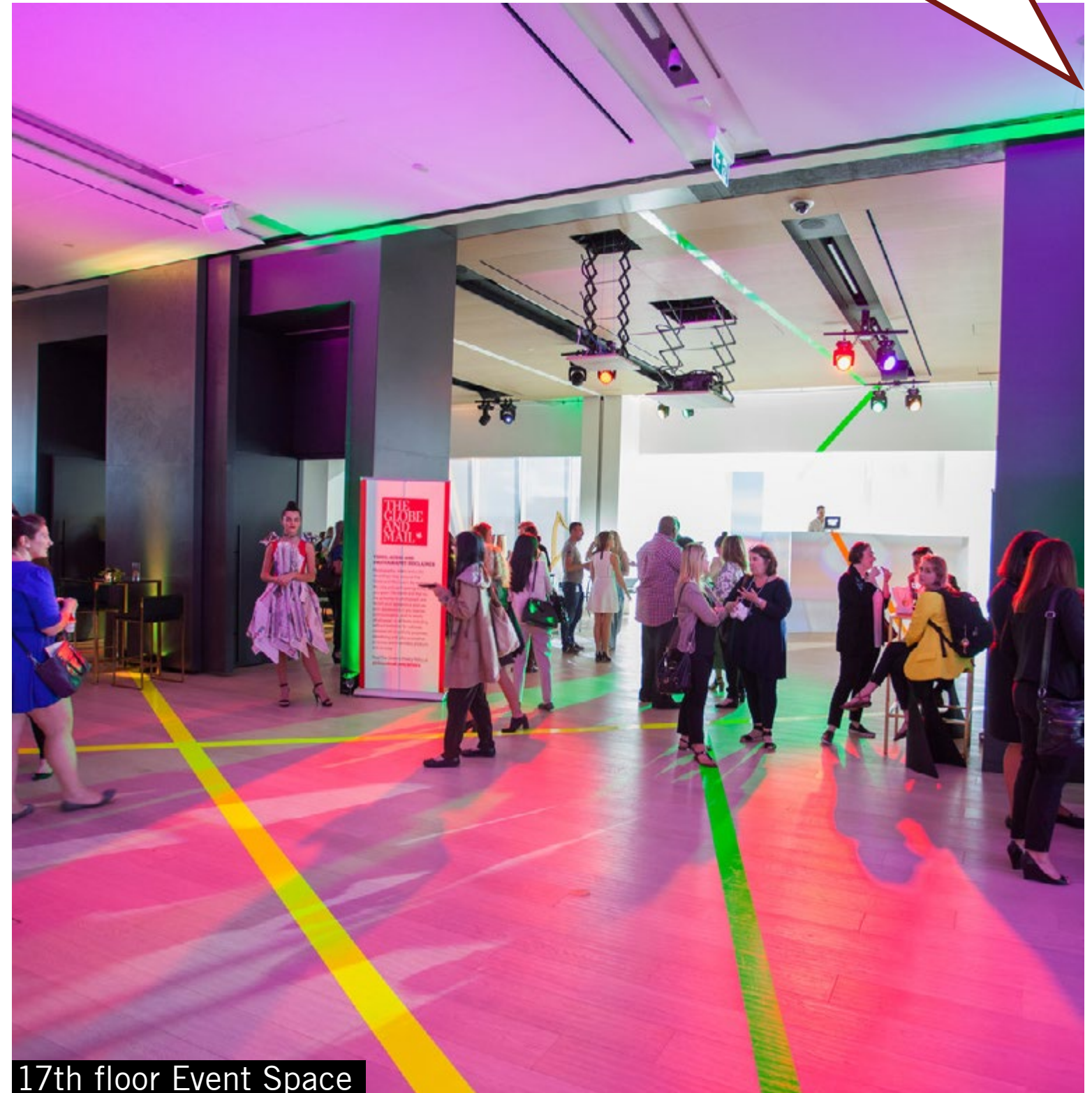
COMPLETION: 2017

PERKINS+WILL

What do you like
about this building?
What do you dislike?



Publicly-accessible Privately Owned Space



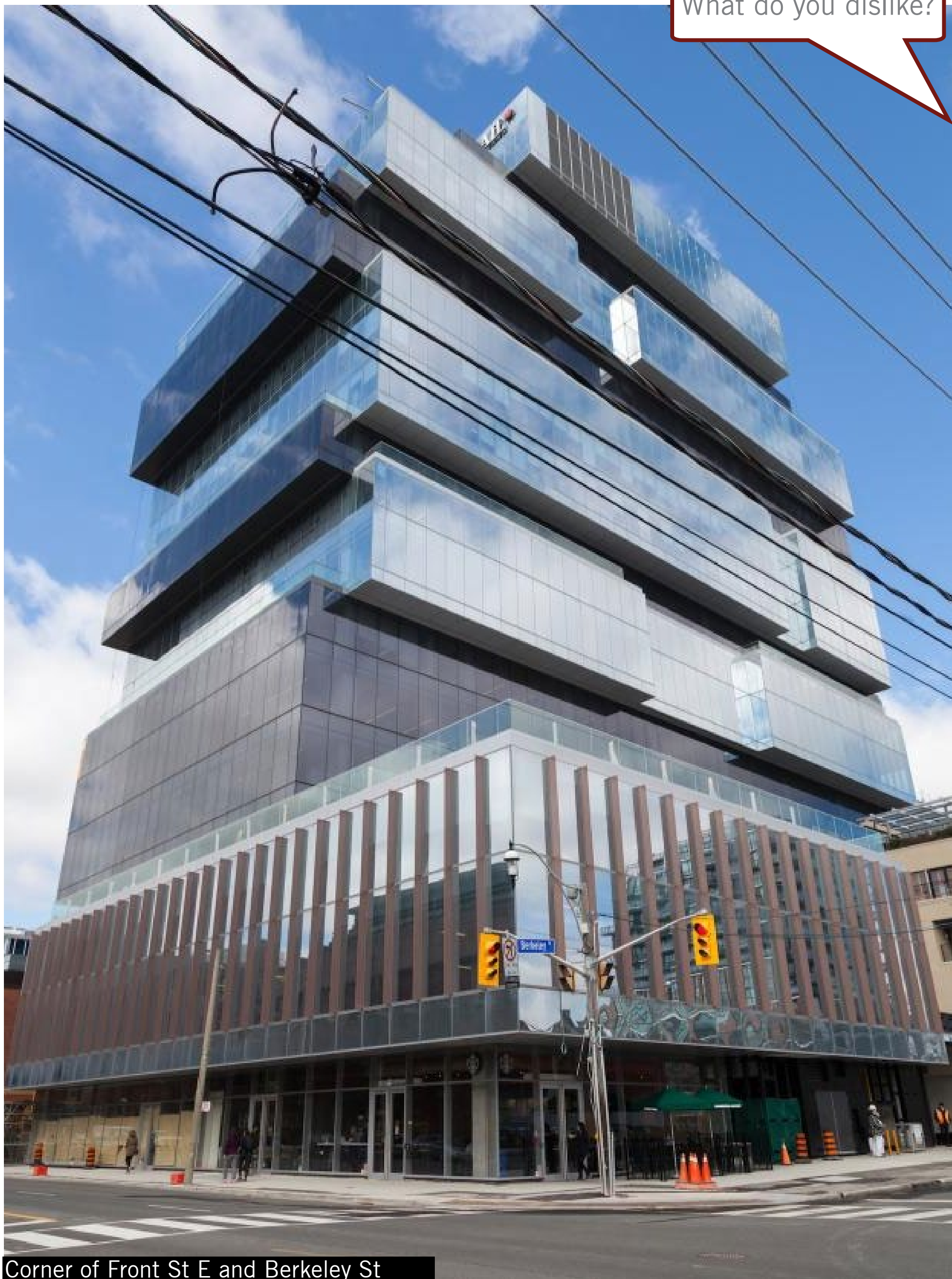
17th floor Event Space



THE GLOBE AND MAIL CENTRE 351 KING ST E

COMPLETION: 2017

What do you like
about this building?
What do you dislike?



Corner of Front St E and Berkeley St



GILEAD TOWNHOUSES

7-15 GILEAD PL

COMPLETION: 2009

PERKINS+WILL

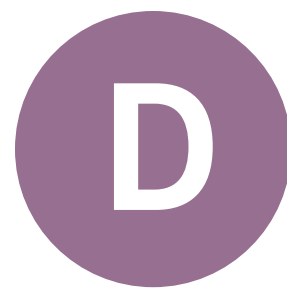
What do you like
about this building?
What do you dislike?



LOCATION



Main facade



GILEAD TOWNHOUSES

7-15 GILEAD PL

COMPLETION: 2009

PERKINS+WILL

What do you like
about this building?
What do you dislike?



View along Gilead looking south



GILEAD TOWNHOUSES

7-15 GILEAD PL

COMPLETION: 2009

What do you like
about this building?
What do you dislike?



View along Gilead looking north



GILEAD TOWNHOUSES 7-15 GILEAD PL

COMPLETION: 2009

PERKINS+WILL

What do you like
about this building?
What do you dislike?



Transition with buildings along King St E



GILEAD TOWNHOUSES

7-15 GILEAD PL

COMPLETION: 2009

PERKINS+WILL

What do you like
about this building?
What do you dislike?



Access to parking along laneway in the back



KING+CONDOS 39 SHERBOURNE ST

COMPLETION: 2015

PERKINS+WILL

What do you like
about this building?
What do you dislike?



LOCATION



Main facade



KING+CONDOS 39 SHERBOURNE ST

COMPLETION: 2015

PERKINS+WILL

What do you like
about this building?
What do you dislike?



Corner of Sherbourne St and King St E looking south



KING+CONDOS

39 SHERBOURNE ST

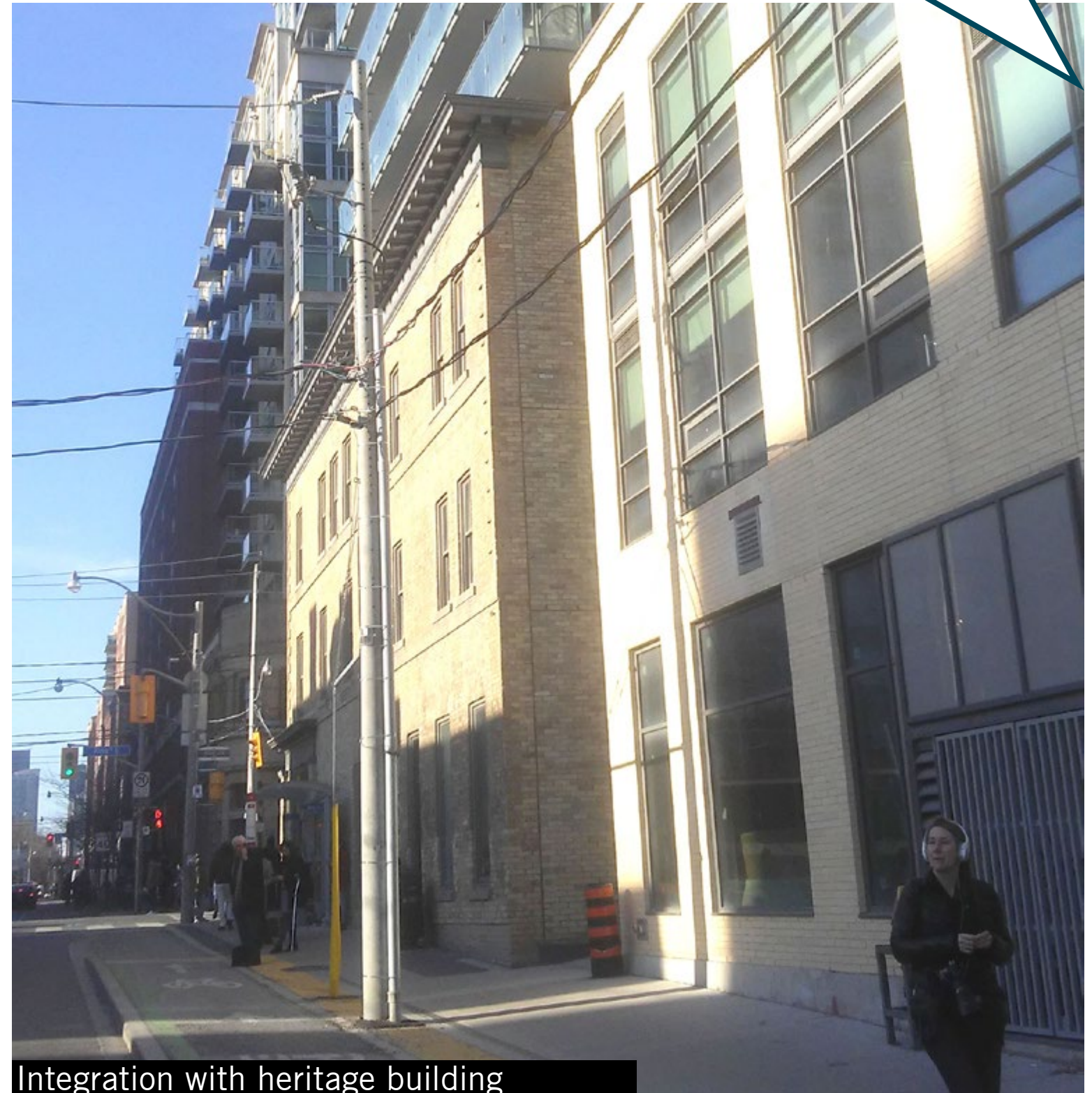
COMPLETION: 2015

PERKINS+WILL

What do you like
about this building?
What do you dislike?



Pedestrian conditions along Sherbourne St



Integration with heritage building



KING+CONDOS

39 SHERBOURNE ST

COMPLETION: 2015

PERKINS+WILL

What do you like
about this building?
What do you dislike?



Access to parking and servicing



KING+CONDOS

39 SHERBOURNE ST

PERKINS+WILL

COMPLETION: 2015

What do you like about this building?
What do you dislike?



View along King St E looking east



KING+CONDOS

39 SHERBOURNE ST

PERKINS+WILL

COMPLETION: 2015

What do you like about this building?
What do you dislike?



View along King St E looking southwest



TRINITY LOFTS 2 EASTERN AVE

COMPLETION: 2012

PERKINS+WILL

What do you like
about this building?
What do you dislike?



LOCATION



Main facade



TRINITY LOFTS 2 EASTERN AVE

COMPLETION: 2012

PERKINS+WILL

What do you like
about this building?
What do you dislike?



View along Eastern Ave looking west



TRINITY LOFTS 2 EASTERN AVE

COMPLETION: 2012

PERKINS+WILL

What do you like
about this building?
What do you dislike?



Access and servicing along Erin St



TRINITY LOFTS 2 EASTERN AVE

COMPLETION: 2012

PERKINS+WILL

What do you like
about this building?
What do you dislike?



Transition to townhouses along Trinity St



TRINITY LOFTS 2 EASTERN AVE

COMPLETION: 2012

PERKINS+WILL

What do you like
about this building?
What do you dislike?



View along Eastern Ave looking east



Pedestrian condition



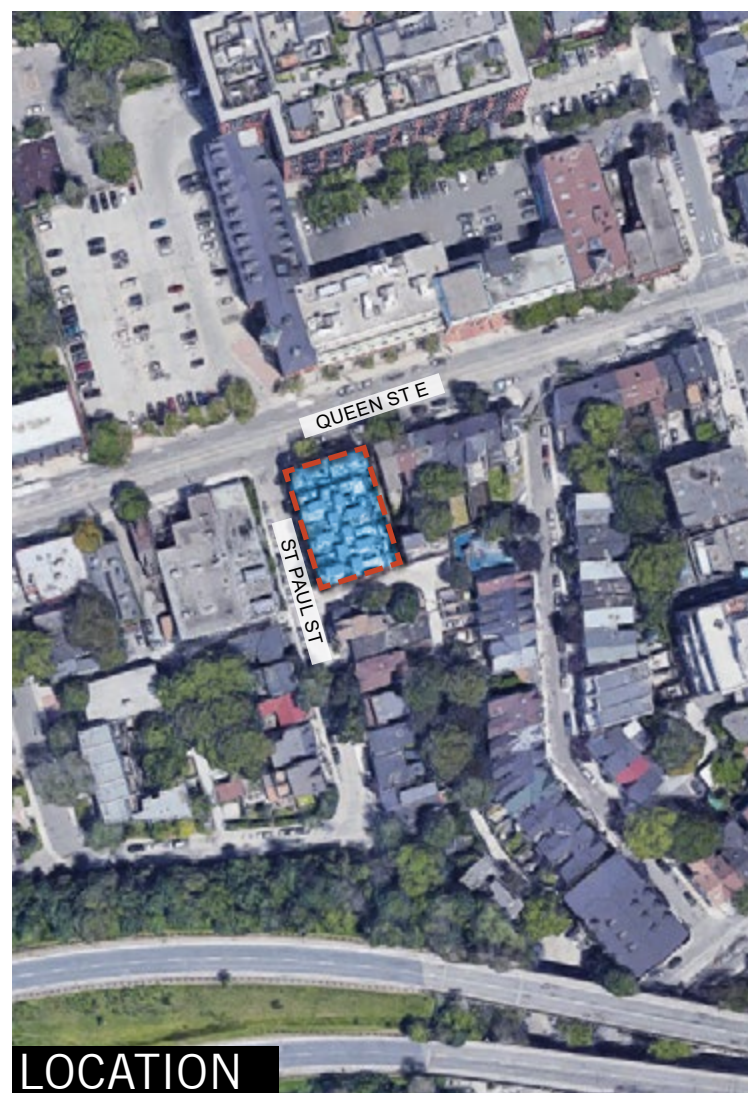
QUEEN TOWNHOUSES

443 QUEEN ST E

COMPLETION: 2009

PERKINS+WILL

What do you like
about this building?
What do you dislike?



LOCATION



Main facade



QUEEN TOWNHOUSES

443 QUEEN ST E

COMPLETION: 2009

PERKINS+WILL

What do you like
about this building?
What do you dislike?



View along St Paul St looking north



QUEEN TOWNHOUSES

443 QUEEN ST E

COMPLETION: 2009

PERKINS+WILL

What do you like
about this building?
What do you dislike?



Access to parking



QUEEN TOWNHOUSES

443 QUEEN ST E

COMPLETION: 2009

PERKINS+WILL

What do you like
about this building?
What do you dislike?



Transition to adjacent buildings



QUEEN TOWNHOUSES 443 QUEEN ST E

COMPLETION: 2009

PERKINS+WILL

What do you like
about this building?
What do you dislike?



Pedestrian conditions along Queen St E



QUEEN TOWNHOUSES

443 QUEEN ST E

COMPLETION: 2009

PERKINS+WILL

What do you like
about this building?
What do you dislike?



View along Queen St E looking east

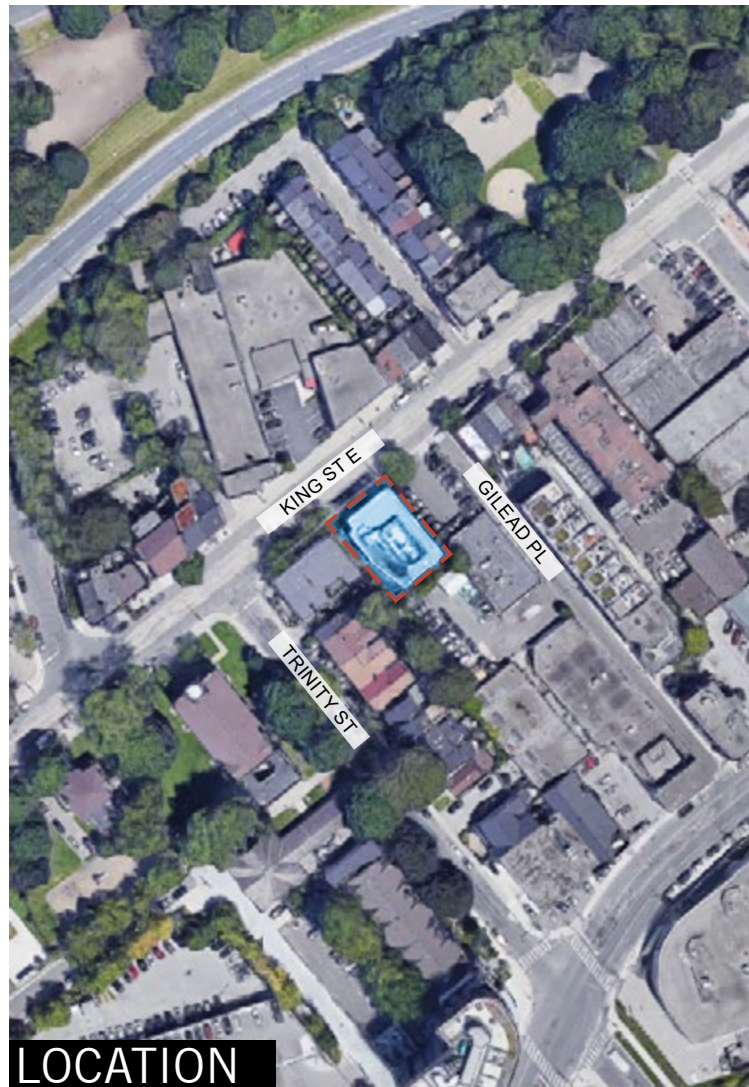


ITALINTERIORS BUILDING 445 KING ST E

COMPLETION: 2014

PERKINS+WILL

What do you like
about this building?
What do you dislike?



LOCATION



Main facade



ITALINTERIORS BUILDING 445 KING ST E

COMPLETION: 2014

PERKINS+WILL

What do you like
about this building?
What do you dislike?



Transition to adjacent buildings



ITALINTERIORS BUILDING 445 KING ST E

COMPLETION: 2014

PERKINS+WILL

What do you like
about this building?
What do you dislike?



View along King St E looking west



ITALINTERIORS BUILDING 445 KING ST E

COMPLETION: 2014

PERKINS+WILL

What do you like
about this building?
What do you dislike?



View along King St E looking east



ITALINTERIORS BUILDING 445 KING ST E

COMPLETION: 2014

What do you like
about this building?
What do you dislike?



Pedestrian conditions along King St E