

# EAST BAYFRONT COMMUNITY CENTRE

Town Hall

2019.04.10





## Agenda

- **Welcome + Introductions**
- **Presentation**
  - Context
  - Proposed Program
  - Design Principles
  - Floor Plans
  - Exterior and Interior Views
- **Question & Answer**
- **Information Boards – Open House**
- **Closing Remarks**



# East Bayfront CC

## Context

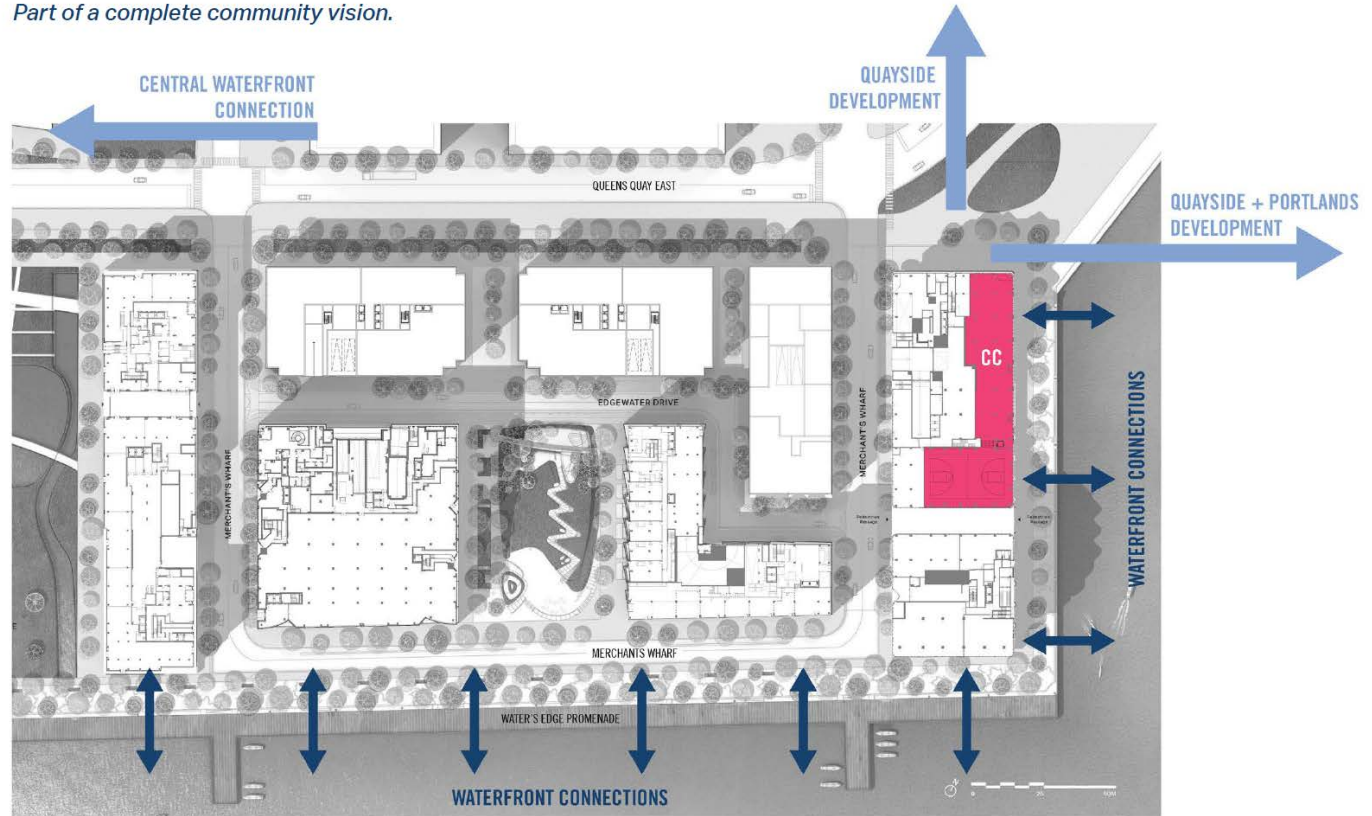
- Community Centre provides an important civic function
- Part of the East Bayside community
- Integrated within the larger East Bayfront Precinct
- Benefits from a unique waterfront context

# East Bayfront CC

## Context

- Part of a complete community vision
- Rich hierarchy of streets and pathways – Community Centre will become a new gateway to the precinct
- Integrated system of parks and green space – Community Centre has opportunity to create new synergies with adjacent park functions
- Community Centre will benefit from a unique connection to surrounding pedestrian, bike and transit systems

*Part of a complete community vision.*





# East Bayfront CC

## Program Summary

- GYMNASIUM
- INDOOR TRACK
- LOCKERS / WASHROOMS
- ACTIVITY ROOMS
- MULTI-USE ROOM
- STUDIO
- COMMUNITY KITCHEN
- RECEPTION / ADMIN
- COMMON AREAS



# East Bayfront CC

## Design Principles



### A storefront identity

- Presenting programs and activities in dynamic new ways
- An open portal to community life

# East Bayfront CC

## Design Principles



### Interactive elements

- A focus on more open / approachable elements
- Defined with millwork / not walls



# East Bayfront CC

## Design Principles



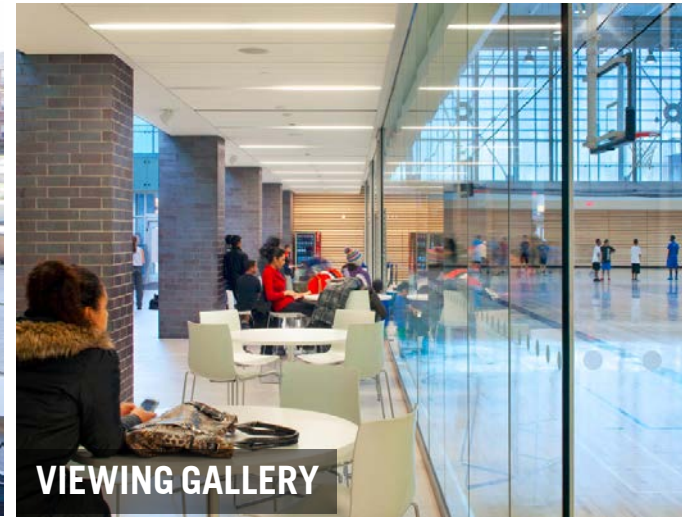
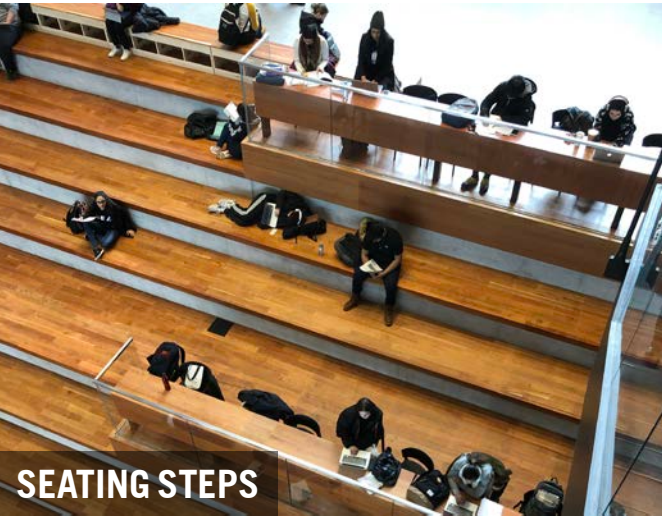
### Convertible spaces

- Blurring the boundary between program space and common space
- Indoor / outdoor connections



# East Bayfront CC

## Design Principles



### Hub spaces

- Focusing on varied spaces for casual interaction + comfort
- Intensifying the relationship between spectator and participant

# East Bayfront CC

## Design Principles



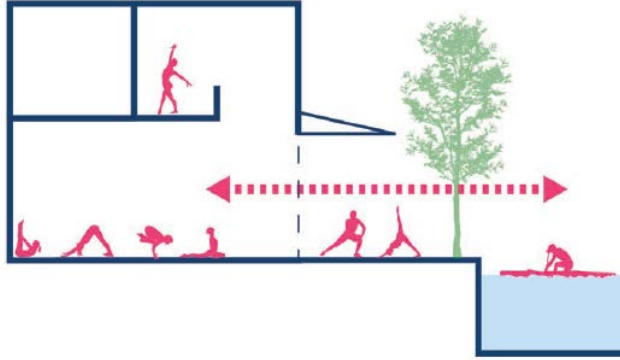
### A civic place

- Creating a more dynamic expression of community purpose and diversity
- Picking up on the patterns and motifs of Aqualuna



# East Bayfront CC

## Design Principles



### A bigger concept of common space

- A more flexible concept of control
- Creative partnerships
- A dynamic interface to the water's edge



# East Bayfront CC

## Design Principles

### An inclusive vision

- A gender neutral concept
- A diverse program that addresses the whole community
- Removing barriers to physical + social access





# East Bayfront CC

## Design Principles

### Self Directed, Engaging + Fun

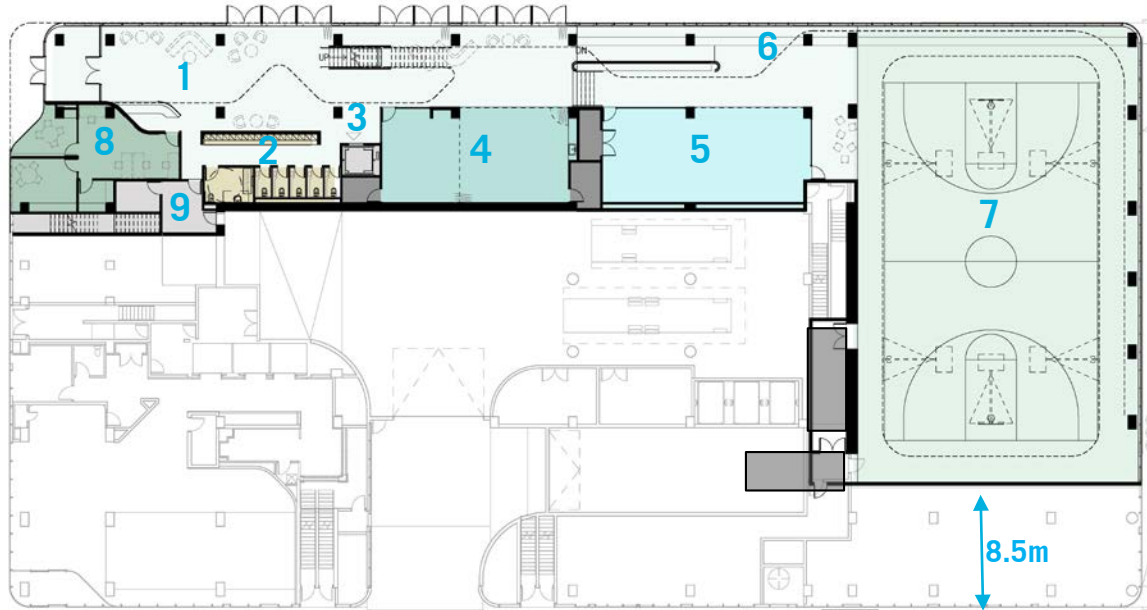
- Individualized fitness options
  - Track
  - Stretching areas
- Group fitness
  - Social fitness routines
- Drop-in uses



## Floor Plan - Level 1

Water's Edge Promenade

Queen's Quay Blvd.

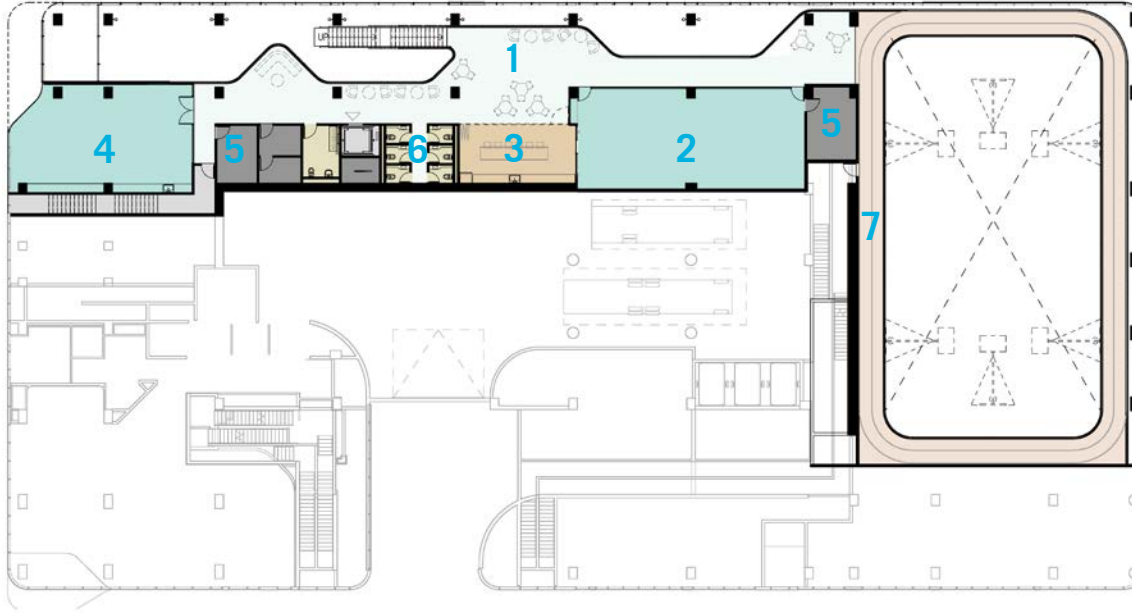


1. Lobby
2. Locker/ Washrooms
3. Elevator
4. Activity Room
5. Studio
6. Bleacher Seating
7. Gym
8. Staff Work Area
9. Service Space



# East Bayfront CC

## Floor Plan - Level 2

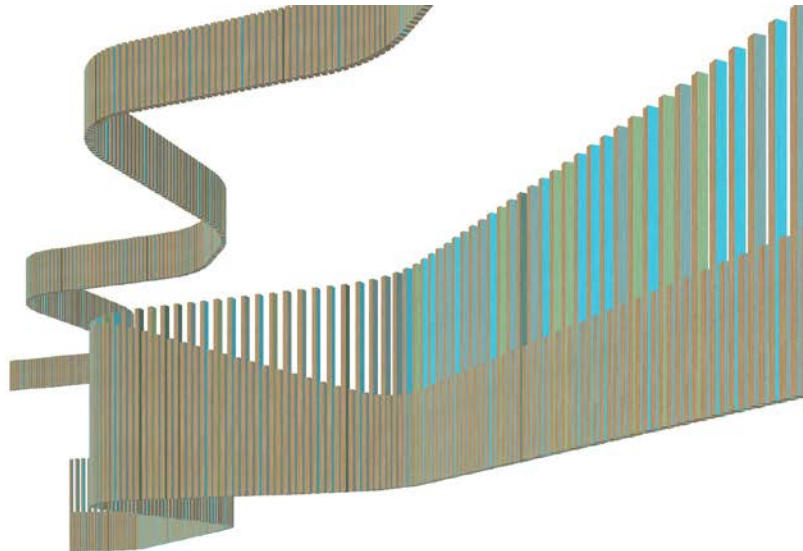


1. Lounge
2. Multi-Purpose Room
3. Community Kitchen
4. Activity Room
5. Storage/Service
6. Washrooms
7. Track

# East Bayfront CC

## Concept Inspiration

- Relate to the larger Aqualuna development
  - Reinterpreting the 'waves' motif
  - A patinated version of Aqualuna copper
- Relate to the waterfront context
  - The colour + fluidity of water

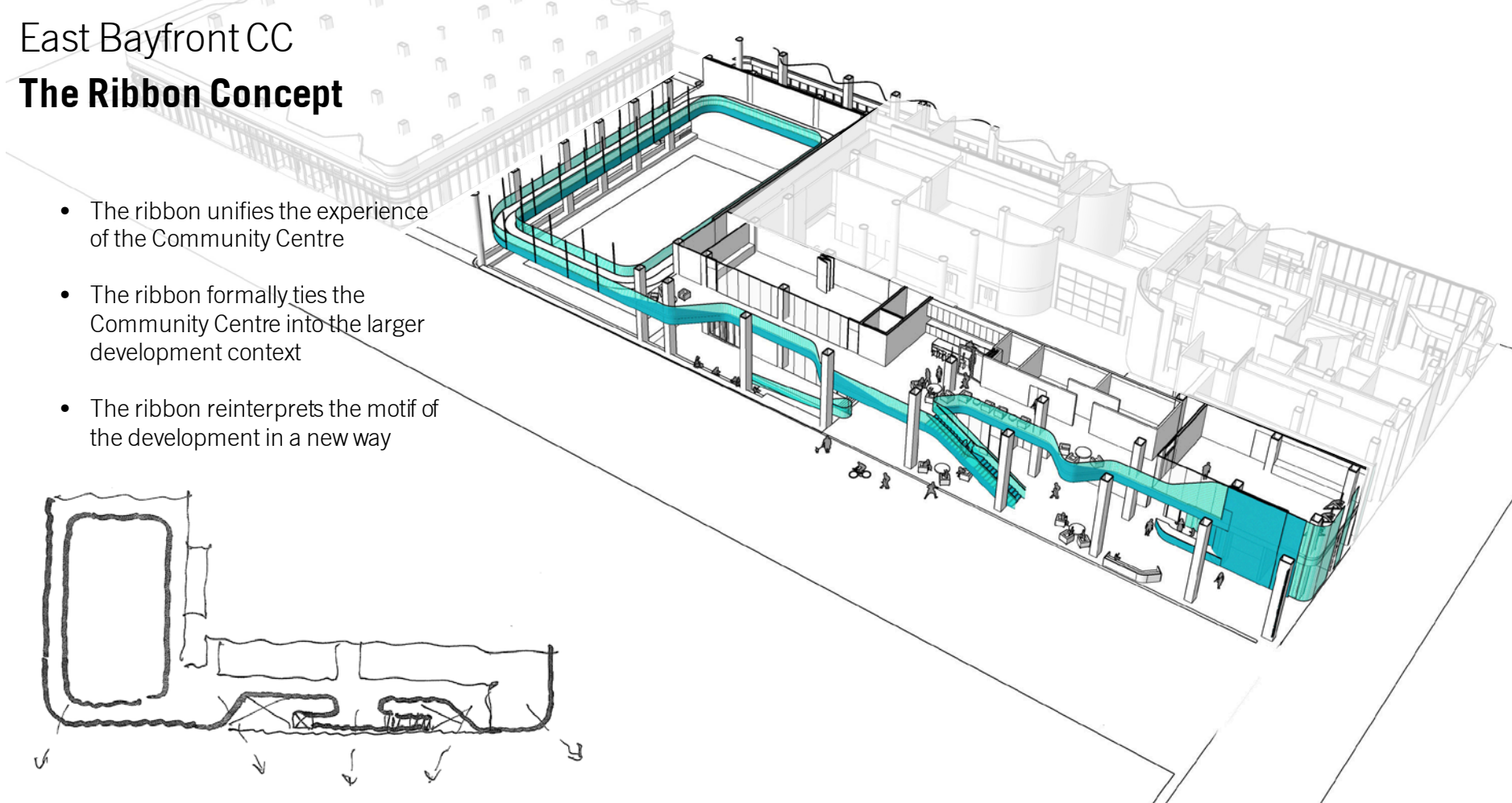
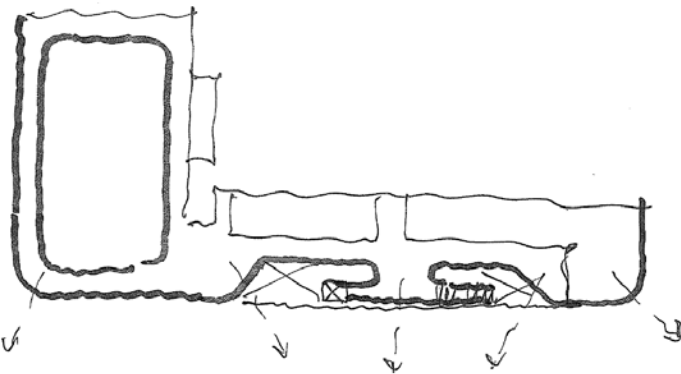




# East Bayfront CC

## The Ribbon Concept

- The ribbon unifies the experience of the Community Centre
- The ribbon formally ties the Community Centre into the larger development context
- The ribbon reinterprets the motif of the development in a new way



# East Bayfront CC

## The Ribbon Concept

- The ribbon ties the program spaces and overall experience together



Track



Studio



Multi-Use Room



Gymnasium

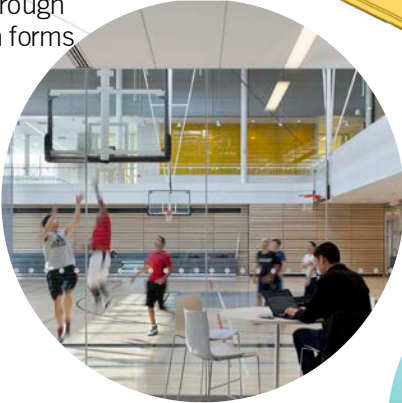




# East Bayfront CC

## Storefront identity

- The Community Centre draws interest through the visibility of its programs and through its unique ribbon forms



External Visibility



Internal Visibility



Street Identity

# East Bayfront CC

## Convertible spaces

- The Community Centre gains a flexibility through the operability of its program spaces and facade



Sliding Doors



Operable Facade



Event Space



# East Bayfront CC

## Hub spaces

- The Community Centre creates varied zones for large and small gatherings
- The ribbon-like form creates a series of comfortable seating alcoves



Viewing Gallery



Seating Steps



Lounge Space

# East Bayfront CC

## Interactive elements

- Open lockers, reception desk and community kitchen create inviting touchpoints within the space



Community Kitchen



Day Lockers



Reception Desk



# East Bayfront CC

## A Civic Identity

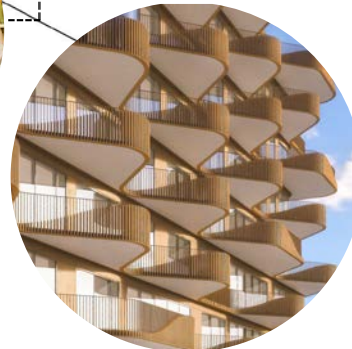
- The ribbon creates a unique identity that can support and augment larger initiatives



Community Wellness



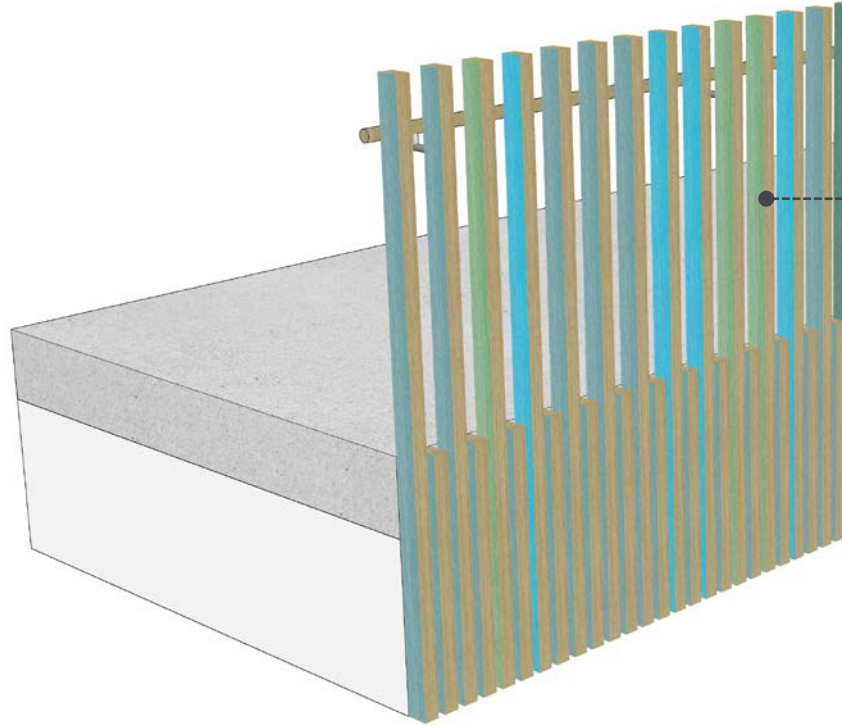
Community Expression



Aqualuna Expression

## What is the Ribbon made of ?

- A simple concept of birch wood slats with side painted colour accents creates a rich and varied expression



50x100mm solid birch pickets-  
natural finish front +  
back and coloured  
paint finish on sides



# East Bayfront CC

## Street Address



# East Bayfront CC

## Entry Lobby

- The wood ribbon animates the edges of the space and ties the Community Centre together





# East Bayfront CC

## Entry Lobby

- The expression of the coloured ribbon helps punctuate the main entry and announce the unique civic function





East Bayfront CC  
**Activity Room**



East Bayfront CC  
**Promenade Facade**





# East Bayfront CC

## Promenade Facade

- Operable glazing creates an active spill out zone to the promenade





# East Bayfront CC Studio



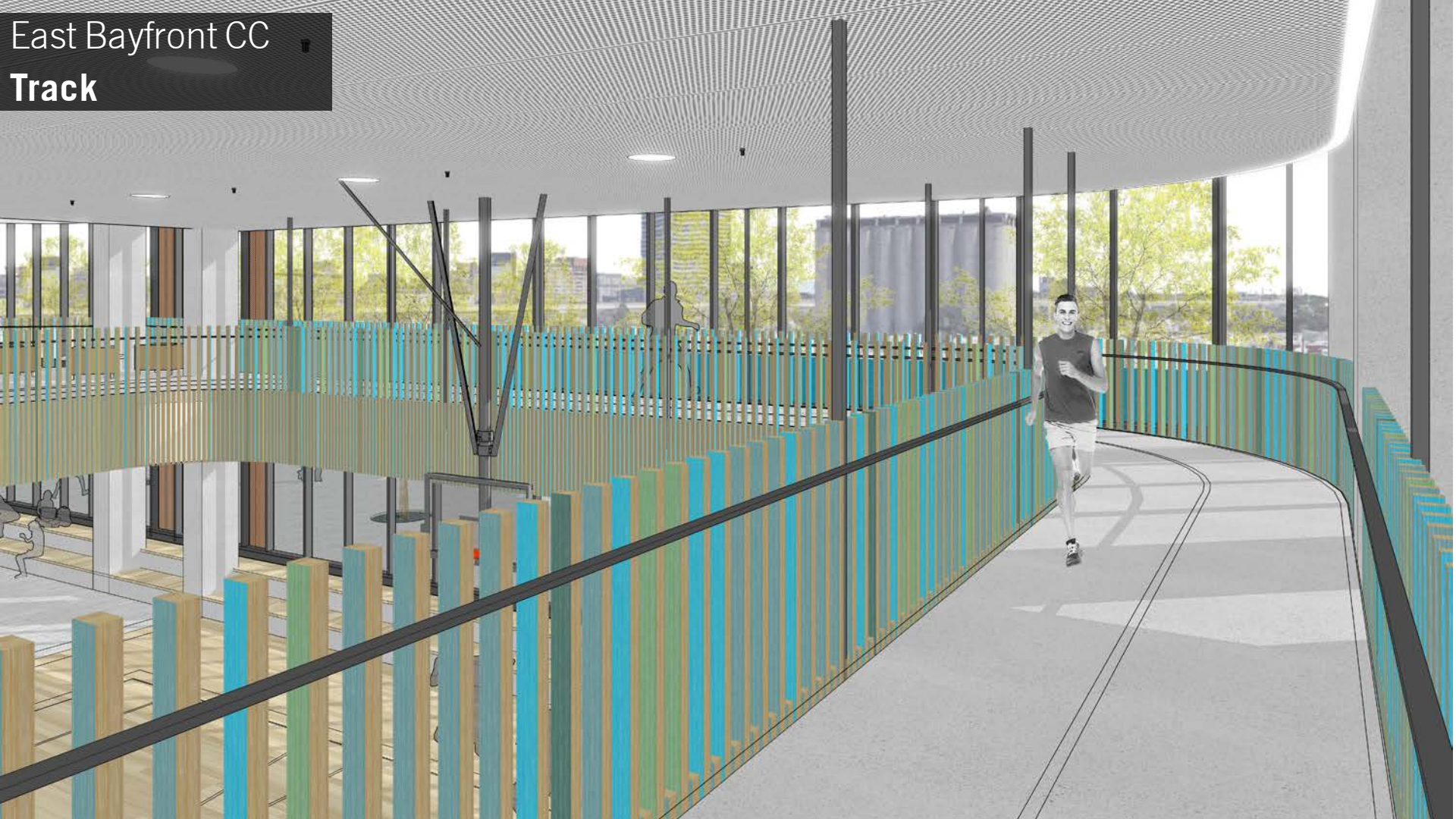
# East Bayfront CC Gymnasium





# East Bayfront CC

## Track





# East Bayfront CC Community Kitchen





THANK YOU