

# **INTERSECTION IMPROVEMENTS ON DEAUVILLE LANE**

**AT ST. DENNIS DRIVE AND  
GRENOBLE DRIVE**

**PUBLIC DROP-IN EVENT**

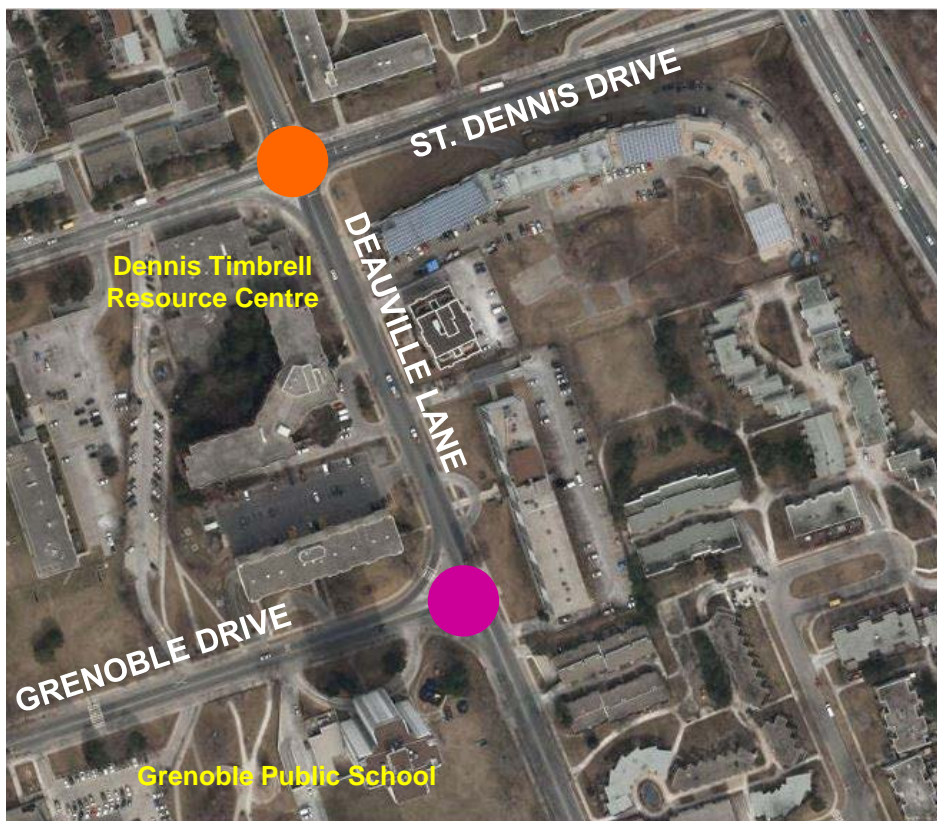
Wednesday, June 12, 2019  
4-8pm

# PROJECT BACKGROUND

In 2013, the St. Dennis Drive and Deauville Lane intersection was identified as the **second most dangerous intersections in Toronto**. Vehicles speeding and hitting pedestrians while turning led to the most severe incidents.

In 2016, The City of Toronto released the **Complete Streets Guidelines**. They state that streets should safely accommodate all users – people walking, cycling, using transit and driving – and also enhance local neighbourhood character.

In 2018, the City of Toronto issued **Guidelines on Right-Turn Channels**, recommending their removal where feasible because they are not accessible for people with low or no vision.

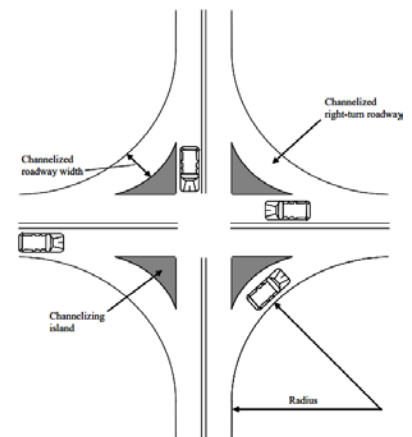
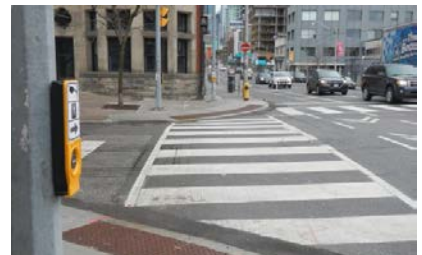


# VISION ZERO ROAD SAFETY PLAN

In 2018, Toronto City Council, as part of the **Vision Zero Road Safety Plan**, authorized the development of 10 intersection improvements across the city that can model the Complete Streets approach. Two have been identified in Flemingdon Park on Deauville Lane.

The City of Toronto's Vision Zero Road Safety Plan includes engineering improvements to **protect vulnerable users** —people walking, children, older adults and people on bicycles.

**Intersection Safety Improvements** are part of the Vision Zero Road Safety Plan which aims to eliminate collisions that result in death and serious injury.



# INTERSECTION SAFETY IMPROVEMENTS

Intersection safety improvements provide a number of benefits:



Shorter crossing distances for pedestrians



Improved sight lines for people driving, walking and cycling



Reduced vehicle speeds where vulnerable road users are crossing



Increased sidewalk widths and pedestrian waiting areas at corners



Improved accessibility and user experience for people of all ages and abilities



Opportunities to improve the surrounding public space



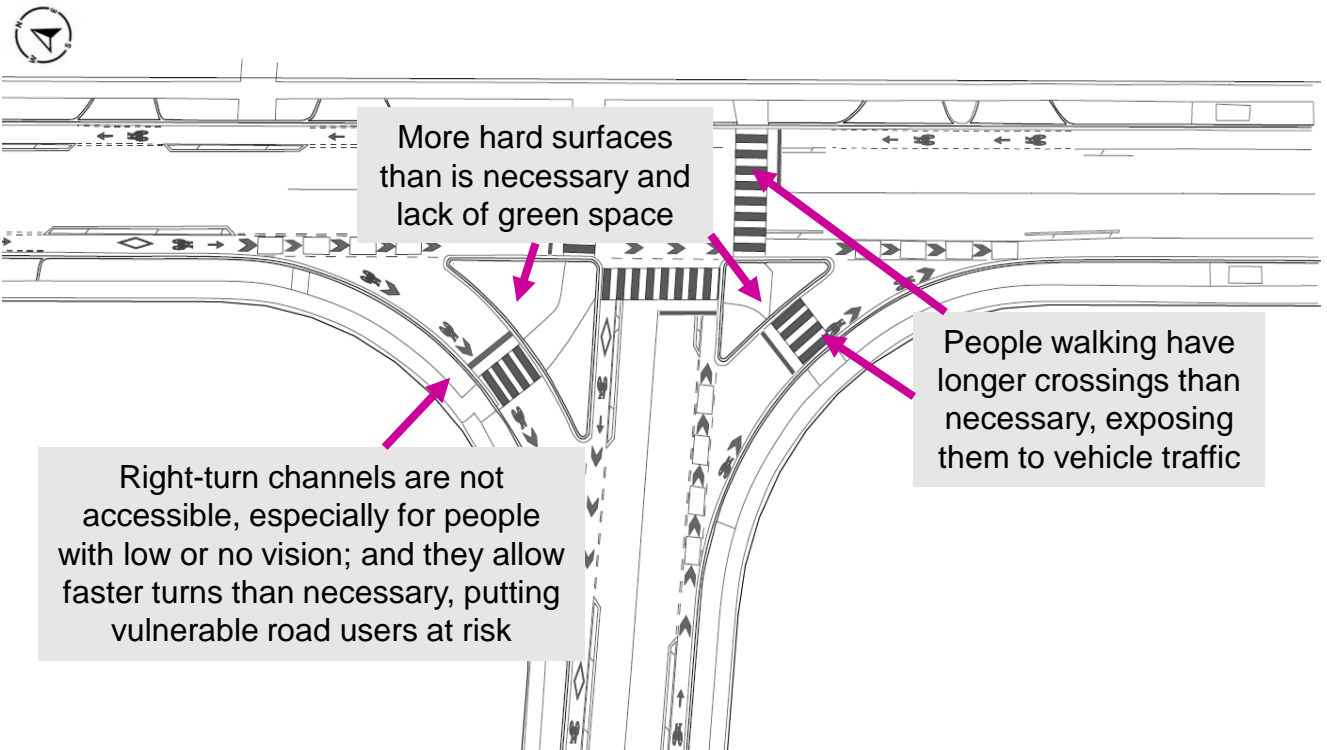
Opportunities to improve conditions for people cycling



Before (left) and after (right) removal of right-turn channels at Dundas St. E. and River St. (2016)

# DEAUVILLE LANE and GRENoble DRIVE

## Existing Conditions

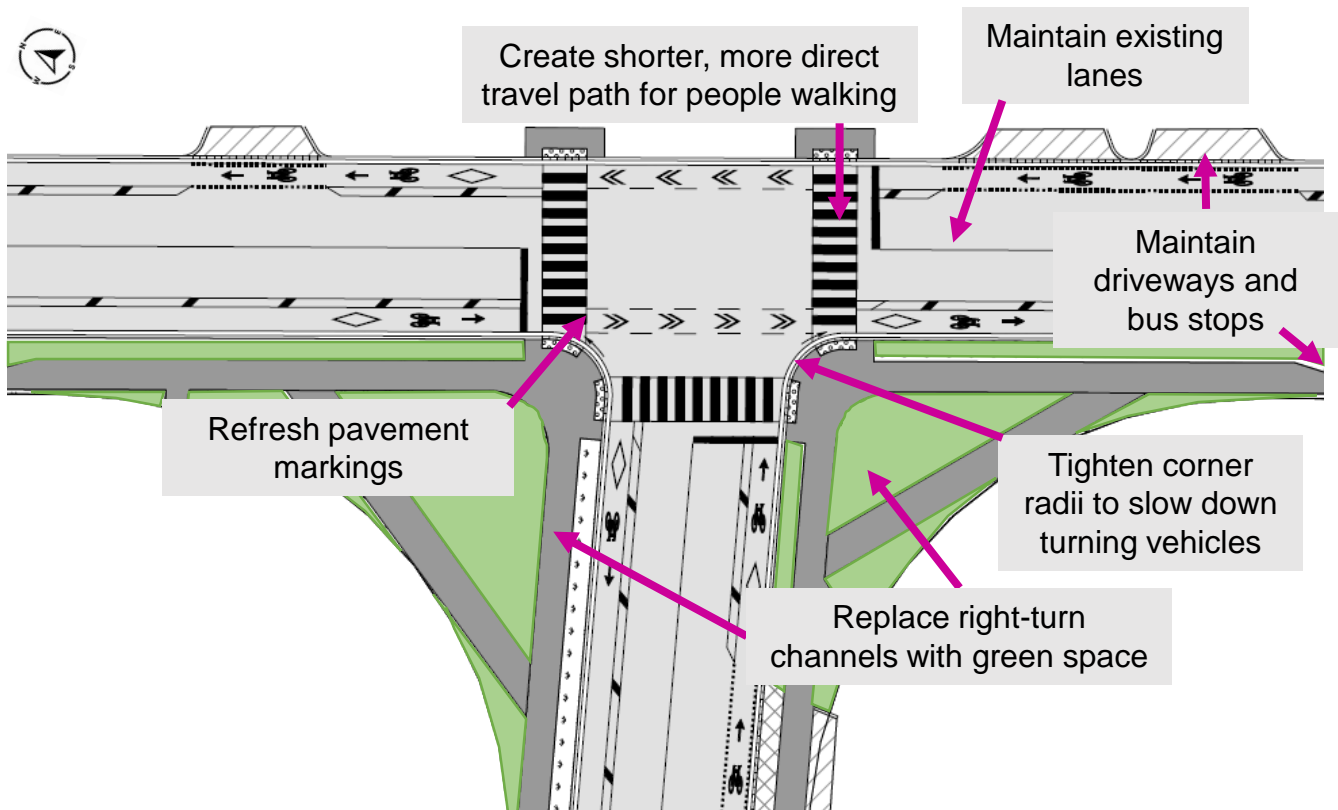


# PLANNED INTERSECTION IMPROVEMENTS

## Deauville Lane and Grenoble Drive

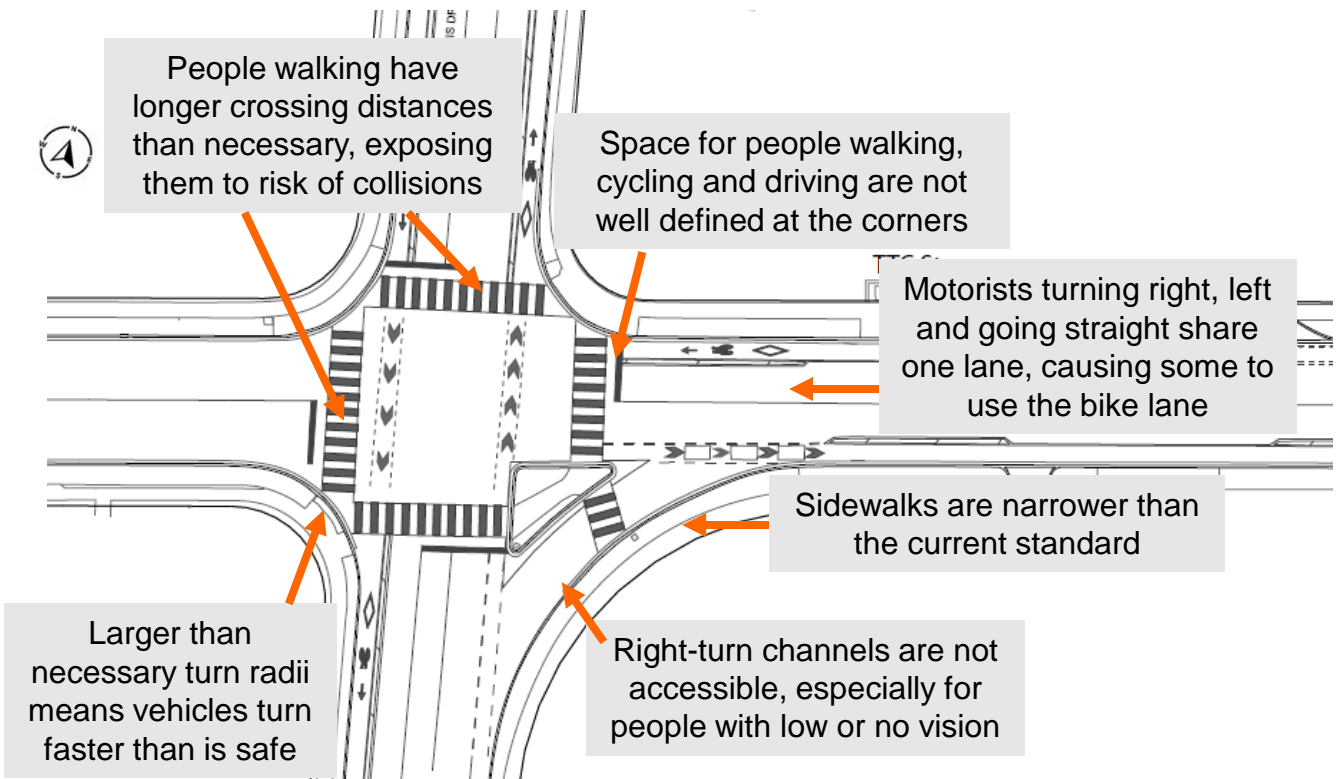


This rendering illustrates some of the planned improvements.



# DEAUVILLE LANE and ST. DENNIS DRIVE

## Existing Conditions

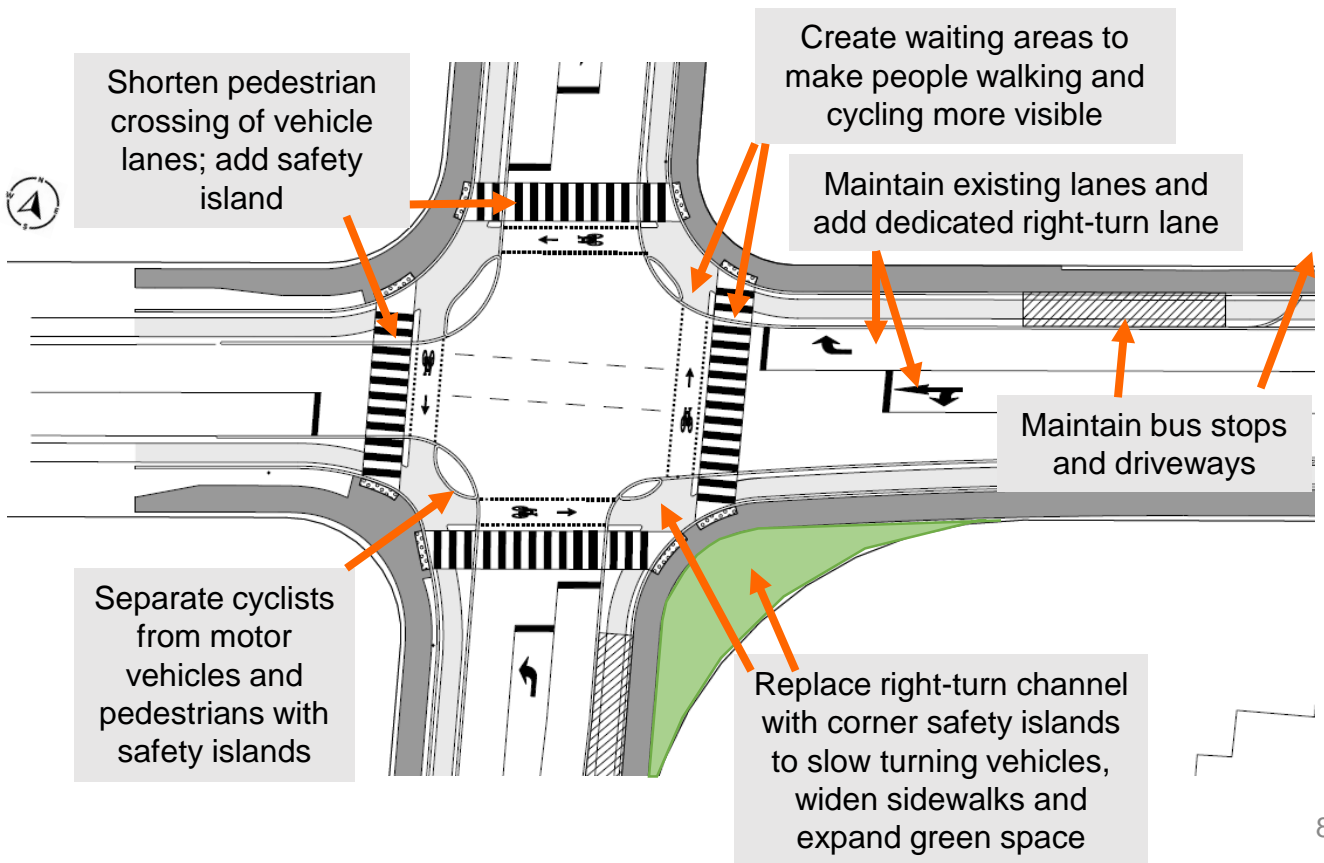


# PLANNED INTERSECTION IMPROVEMENTS

## Deauville Lane and St. Dennis Drive



This rendering illustrates some of the planned improvements.





# NEXT STEPS

**June - July 2019**

- Public Drop-In Event (Wednesday, June 12, 4-8pm)
- Present design concepts and gather feedback
- Review comments received after public event and incorporate any necessary design changes

## **Deauville Lane and Grenoble Drive**

- Finalize design in 2019
- Planned for construction in 2019-2020

## **Deauville Lane and St. Dennis Drive**

- Finalize design in 2019
- Seek Council approval in 2020-2021
- Planned for construction in 2022

**Public notices will be issued prior to construction**

# PROVIDE FEEDBACK, CONTACT US

Thank you for attending today's event.  
All of the materials displayed are available on the  
project website.

**Please fill out a comment form before you leave  
or online by June 23, 2019.**

[www.toronto.ca/DeauvilleIntersections](http://www.toronto.ca/DeauvilleIntersections)

## Contact:

Robyn Shyllit  
Senior Public Consultation Coordinator  
City of Toronto

[Robyn.Shyllit@toronto.ca](mailto:Robyn.Shyllit@toronto.ca)

416-392-3358 | TTY: 416-397-0831

