



# David Crombie Park

Revitalization Design

## What We Heard #2

---

July 2019





# Workshop Notice



Call **3-1-1**

The City of Toronto holds public consultations as one way to engage residents in the life of their city. Toronto thrives on your great ideas and actions. We invite you to get involved.

## David Crombie Park Revitalization Design

The City of Toronto invites you to learn more about proposed improvements to David Crombie Park. Staff are hosting a public information workshop to:

- Present draft concept plan options
- Receive public input
- Identify community preferences and priorities
- Discuss next steps.



Councillor Joe Cressy, Ward 10 - Spadina-Fort York & Councillor Kristyn Wong-Tam, Ward 13 - Toronto Centre, will be in attendance.

Everyone is welcome to attend.

You may register for this event at: [david-crombie-park-workshop-2.eventbrite.com](https://david-crombie-park-workshop-2.eventbrite.com)

**Date:** Tuesday, April 2, 2019

**Times:** 4:00 pm to 6:00 pm OR 6:30 to 8:00 p.m.

Please choose a session that best suits your schedule.

**Location:** St. Lawrence Community Centre  
230 The Esplanade, Multi-Use Room



ASL interpreters may be provided, if available.

Please contact 311 in advance of this meeting if interpreter is needed.



**For more information about this project:** email [Nancy.Chater@toronto.ca](mailto:Nancy.Chater@toronto.ca) or call 416-338-5237.

**The Councillor for this area:**

Councillor Joe Cressy

Ward 10 – Spadina-Fort York Phone:

416- 392-404

Email: [Councillor\\_Cressy@toronto.ca](mailto:Councillor_Cressy@toronto.ca)



@TorontoPFR

Information will be collected in accordance with the Municipal Freedom of Information and Protection of Privacy Act. With the exception of personal information, all comments will become part of the public record.

# David Crombie Park Revitalization Design

The David Crombie Park Revitalization Design project will develop a comprehensive conceptual design and implementation plan for improvements to the park that meet the current and future needs of the community.

The design will evolve through consultation with residents, the public and other stakeholders.

This report provides a summary of the input received on the concept plan options. The concept plan options illustrate variations in circulation, connections, heritage, water features, treatment of school yards, how to accommodate dogs, active sports, opportunities for programming, pavilions and washrooms and park amenities. Input was sought on the variables in each concept plan option in order to help select “the best of” each option to inform a preferred concept to be presented in the next phase of the project.

Input was provided through two public workshops held on April 2, 2019, an online survey, email comments, comments from the Community Resource Group and City staff..



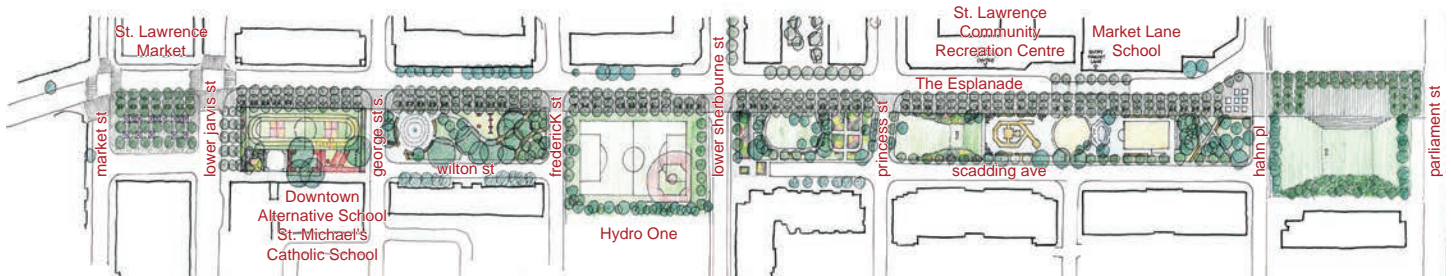
David Crombie Park - Study Area



# Three Concept Options

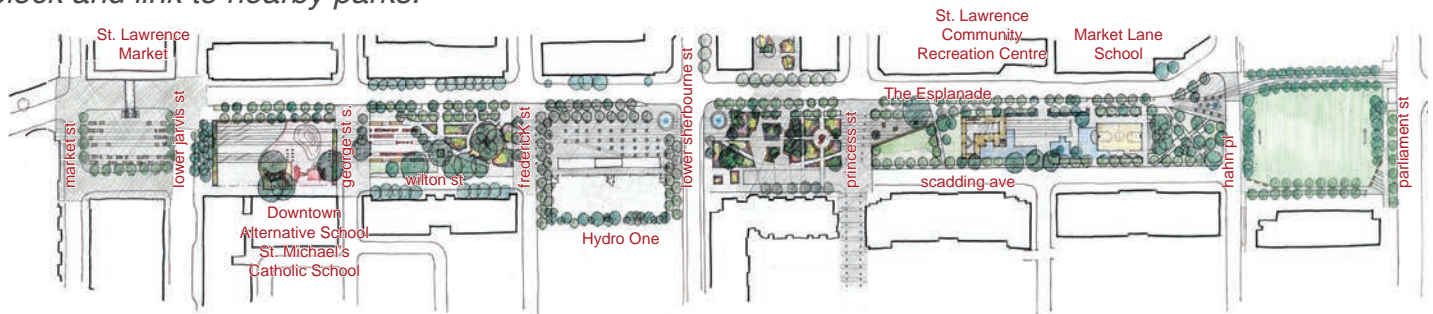
## Option 1 - Promenade and 7 Parks (referred to as “Promenade” on following tables)

*A beautiful, wide, formal tree-lined promenade with plenty of seating is the central feature of the concept. Each park block is enhanced with new amenities. Park geometries are inspired by the site's 1970's design origins.*



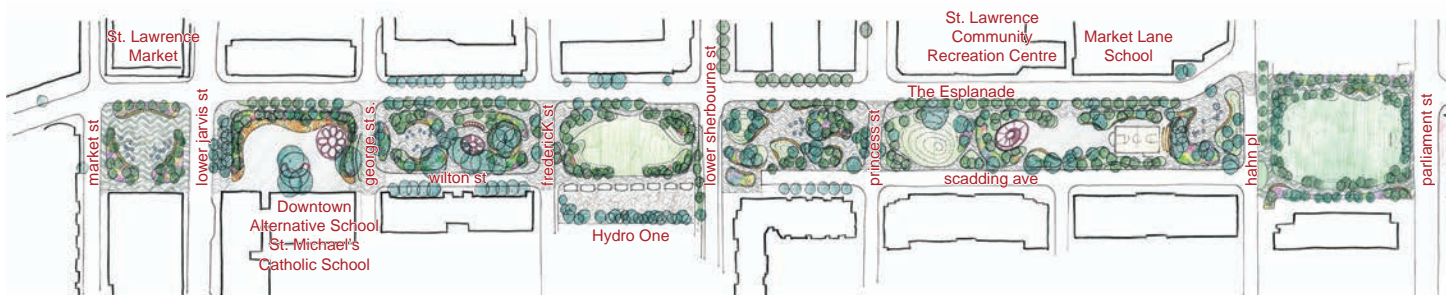
## Option 2 - Heritage and Storytelling (referred to as “Heritage” on following tables)

*References the park's history, particularly its dock and rail eras, as design features throughout the concept. Former quays and rail lines leave imprints in the paving, become pathways through garden areas, and are re-interpreted as water features. Special paving connects across each park block and link to nearby parks.*



## Option 3 - Gardens and Walks (referred to as “Gardens” on following tables)

*Inspired by an historic waterfront promenade lined with gardens, organic and curvilinear forms create defined outdoor rooms for activities. Low landforms, horticultural planting, and clusters of trees surround different activity areas.*



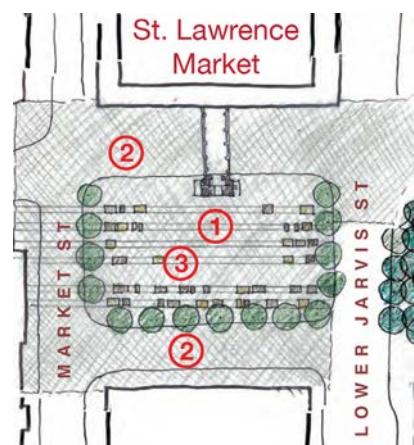
# Workshop Results

Two workshops were held on April 2, 2019 to present the concept plan options for David Crombie Park. Both workshops began with a presentation describing each of the three concepts, followed by table group activities where people were asked to respond “thumbs up/thumbs down” to various components in each of the three concepts. Approximately 50 people attended each workshop with 6-8 table groups. The following is a summary of the block by block input (moving from west to east) on the three concept plan options from all table groups at both sessions.

## Block 1



Promenade: South of The Market	Thumbs Up	Thumbs Down
Bosque of trees throughout	38	8
Simple, flexible paving surface	30	9



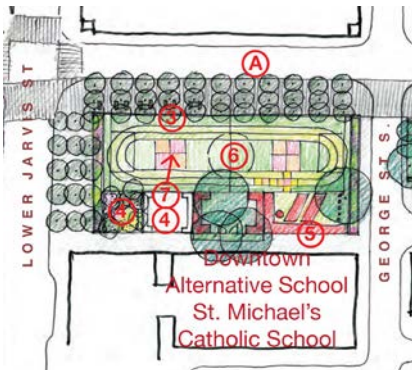
Heritage: South of The Market	Thumbs Up	Thumbs Down
Movable furniture on rails (with lots of seating and eating)	41	5
Decorative paving extended across streets around this park block	39	5
Simple, open, flexible public space	40	13



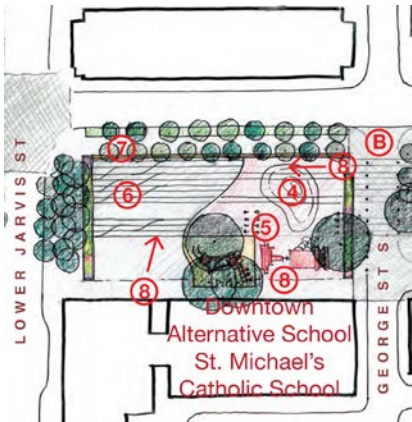
Gardens: South of The Market	Thumbs Up	Thumbs Down
Close Wilton Street to create a larger park block	36	1
Lush planting areas around the outside of the park block	39	3
Small, flexible, paved area in the centre with water play jets	29	17

Generally, there is a preference for lush planting south of the Market with moveable furniture, closing Wilton Street and extending decorative paving across the streets.

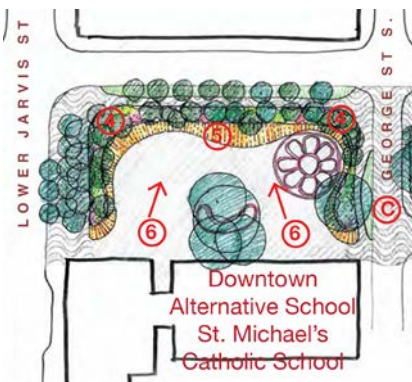
## Block 2



Promenade: Lower Jarvis to George	Thumbs Up	Thumbs Down
Decorative fence along the Esplanade side separates playground from promenade	42	2
Teaching garden, outdoor classroom	36	9
Vertical play structures	37	
Multi-sport rubberized surface	29	
Access from the outdoor classroom	29	4



Heritage: Lower Jarvis to George	Thumbs Up	Thumbs Down
Simple, rubberized surface with play mound	20	11
Posts, fences refer to former wharfs	17	14
Lines on playground refer to former railways	30	8
Bench/ wall element separating the playground from the promenade	31	
Access from the south walkway and George St.	20	

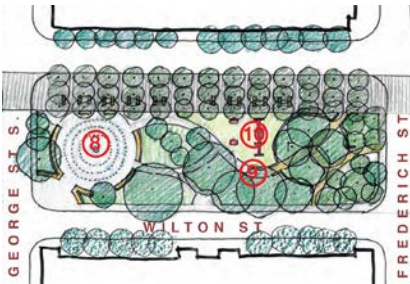


Gardens: Lower Jarvis to George	Thumbs Up	Thumbs Down
Lush planter separating playground from promenade	40	6
Curilinear seating/deck/play element around the edge of the playground	38	8
Access from the south walkway	45	0

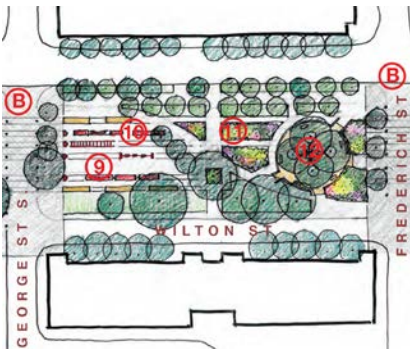
Generally, there is a preference for separation with fencing and planting between the promenade and school yard, access to the south walkway, and vertical play structures.



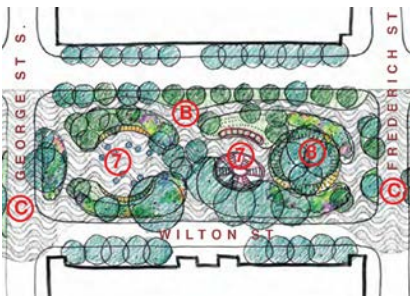
## Block 3



Promenade: George to Frederick	Thumbs Up	Thumbs Down
Water jets play area in circular area	39	1
Curvilinear pathways	37	0
Small play area with swings	37	1
Maintain the “circle garden” concrete wall but with boardwalk pathway	25	8



Heritage: George to Frederick	Thumbs Up	Thumbs Down
Lines in road paving and park refer to former rail-ways	32	8
Playground with linear play equipment	26	12
Community horticultural areas	29	3
Maintain the “circle garden” concrete wall and add new wood deck surface	22	11



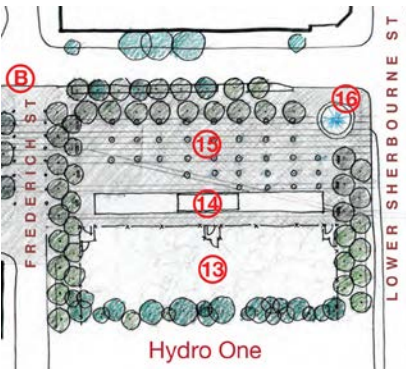
Gardens: George to Frederick	Thumbs Up	Thumbs Down
Water play outdoor room and playground outdoor room	43	1
Removal of the “circle garden” concrete wall but reference it with circular pathway geometry	40	4

Generally, there is a preference for water play and playground, removal of the concrete wall at the circle garden, horticultural areas and curvilinear paths.

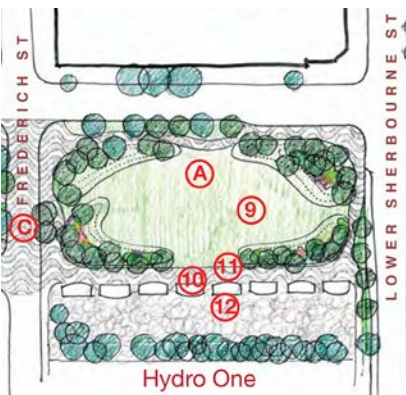
## Block 4



Promenade: Frederick to Lower Sherbourne	Thumbs Up	Thumbs Down
Active sports field, no dog area	5	38



Heritage: Frederick to Lower Sherbourne	Thumbs Up	Thumbs Down
Dedicated dog relief area	47	4
Large shade structure/pavilion with washrooms	48	2
Large water play plaza	34	7
Gateway feature at Sherbourne	28	10



Gardens: Frederick to Lower Sherbourne	Thumbs Up	Thumbs Down
Create a “great lawn” that is flexible for activities and surrounded by low berms and planting	49	
Series of small, programmable pavilions, including a public washroom	32 9-no wash-room 7-not next to dog park	2
New walkway connecting Frederick St to Sherbourne	38	9
Dedicated dog area	56	3

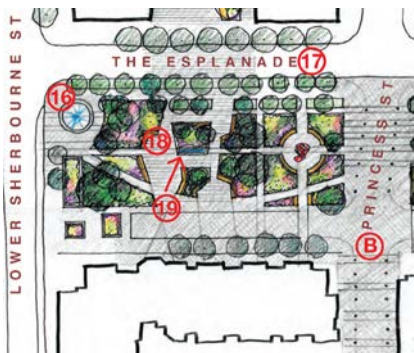
Generally, there is a preference for an area dedicated to dogs, a “great lawn” and a shade structure and washrooms.



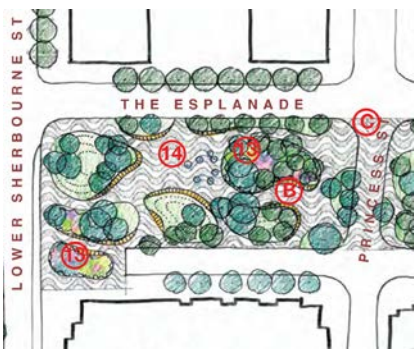
## Block 5



Promenade: Lower Sherbourne to Princess	Thumbs Up	Thumbs Down
Same gardens as existing but with wider paths and more benches	38	3
The potential to host a dedicated dog relief area	7	26



Heritage: Lower Sherbourne to Princess	Thumbs Up	Thumbs Down
Decorative paving lining to Princess Street Park and new POPS park	39	8
Expanded horticulture beds/ community gardens with more seating	36	7
Small water feature referencing former docks	28	18



Gardens: Lower Sherbourne to Princess	Thumbs Up	Thumbs Down
Series of garden beds/horticultural area with seating and walkways	54	
Water play outdoor room	31	15

Generally, there is a preference for gardens/horticultural areas with seating and walkways and decorative paving on Princess Street.

## Block 6



Promenade: Princess to Hahn	Thumbs Up	Thumbs Down
Playground are inspired by 1970s	22	20
New pathways and seating under trees	31	4
Expanded fountain with smaller jets for playing	22	12
Decorative paving and trees link to market lane school	40	



Heritage: Princess to Hahn	Thumbs Up	Thumbs Down
Berm/ bench creating small programmable space	43	4
Playground referencing former docks and rail lines	34	9
Large upper-level playground	36	7
Picnic area under trees	45	3
Fountain area to include smaller play fountains	34	9

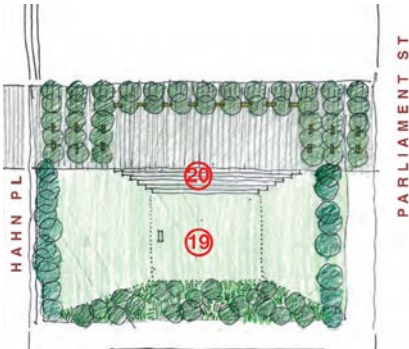


Gardens: Princess to Hahn	Thumbs Up	Thumbs Down
Grassy knoll	39	3
Lush planting zones around the edge of the play-ground	34	7
Playground equipment set "in the trees"	30	10
Water play outdoor room	41	

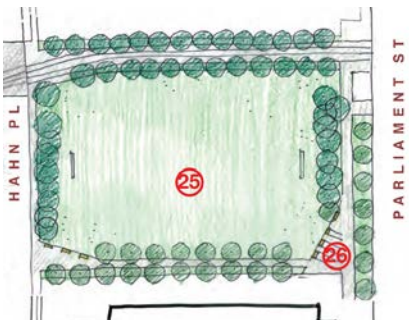
Generally, there is a preference for decorative paving and trees to link Market Lane School to the park, grassy knoll, programmable space, playground that references the former docks and rail lines with a large upper-level playground and water play at the east end of the park.



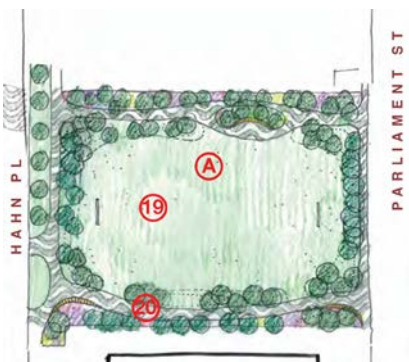
## Block 7



Promenade: First Parliament Park	Thumbs Up	Thumbs Down
Large grassy viewing mound	15	27
Tiered seating overlooking flexible plaza area	24	15



Heritage: First Parliament Park	Thumbs Up	Thumbs Down
Maintain the soccer field	30	11
Small seating areas	23	10



Gardens: First Parliament Park	Thumbs Up	Thumbs Down
Maintain the soccer field	44	1
New walkway along the south side of the field, with seating areas	45	

Generally, there is a preference to maintain the soccer field with a new walkway along the south side of the field with seating.

# Online Survey

An online survey using the Metroquest platform was made available to the public between April 1, 2019 and May 11, 2019. The three concept plan options were posted with an opportunity to respond “thumbs up/thumbs down” to the variables in each concept plan option. A total of 374 people responded. The following is a record of the results of the survey moving from west to east. The most preferred variables in each concept plan option are summarized at the end of the survey results for each option.

## OPTION 1 - HERITAGE AND STORYTELLING

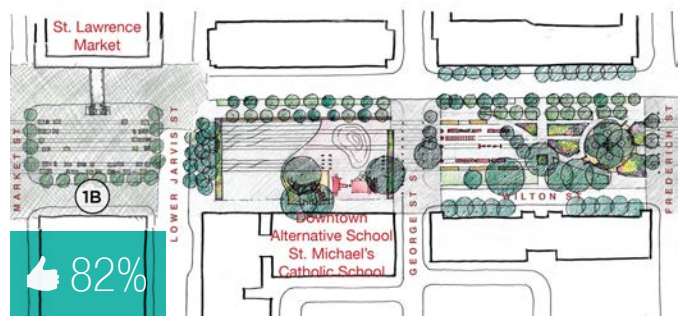
### BLOCK 1 - 3: 1A

Moveable furniture on rails (with lots of seating and eating)



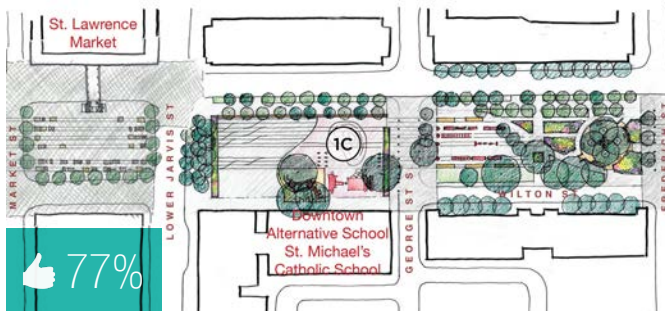
### BLOCK 1 - 3: BLOCK 1B

Decorative paving extended across streets around this park block



### BLOCK 1 - 3: 1C

Playground - Simple, rubberized surface with play mound



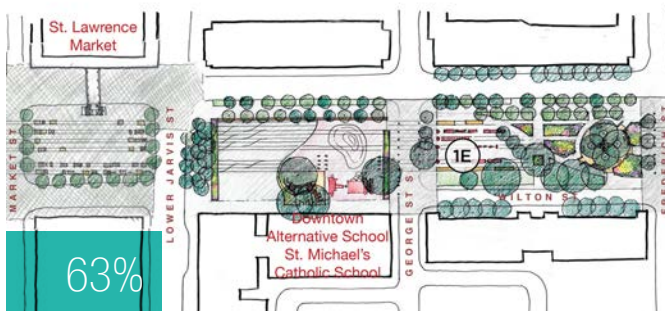
### BLOCK 1 - 3: 1D

Playground - Bench/wall element separating the playground from the promenade



### BLOCK 1 - 3: 1E

Lines in road paving and park refer to former railways



### BLOCK 4 - 5: 2A

Dedicated, fenced dogs off leash area





#### BLOCK 4 - 5: 2B

Large shade structure/pavilion with washrooms



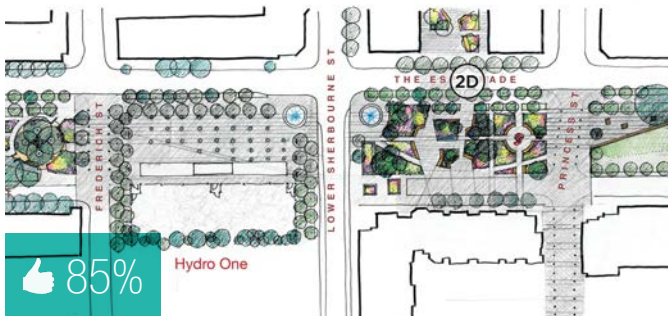
#### BLOCK 4 - 5: 2C

Large water play plaza



#### BLOCK 4 - 5: 2D

Decorative paving linking to Princess Street Park and new park



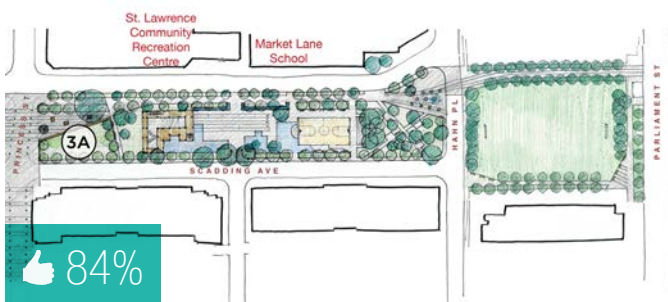
#### BLOCK 4 - 5: 2E

Small water feature referencing former docks



#### BLOCK 6 - 7: 3A

Berm/bench creating small programmable space



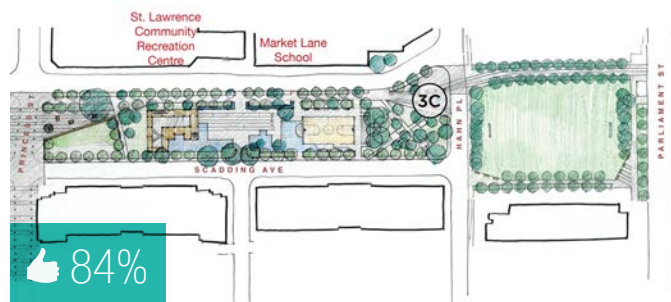
#### BLOCK 6 - 7: 3B

Playground referencing former docks and rail lines



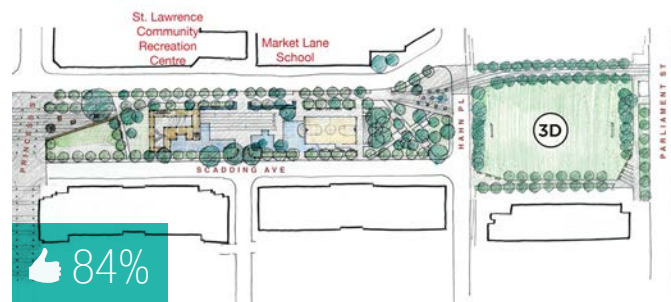
### BLOCK 6 - 7: 3C

Fountain area to include smaller play fountains



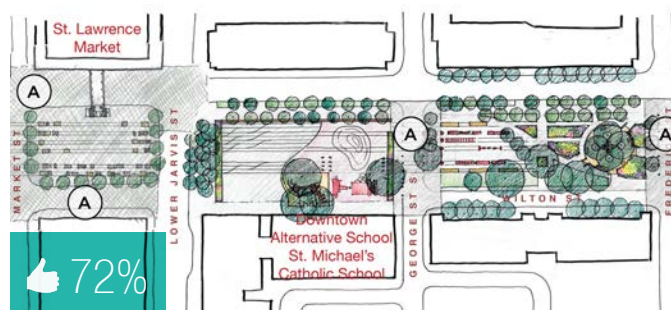
### BLOCK 6 - 7: 3D

Parliament Sq. Park – maintain the soccer field



### BLOCK 1 - 3: A

Special paving treatment and reduced on-street parking on Market St, George St and Frederick St



### BLOCK 4 - 5: B

Special paving treatment and reduced on-street parking on Princess St



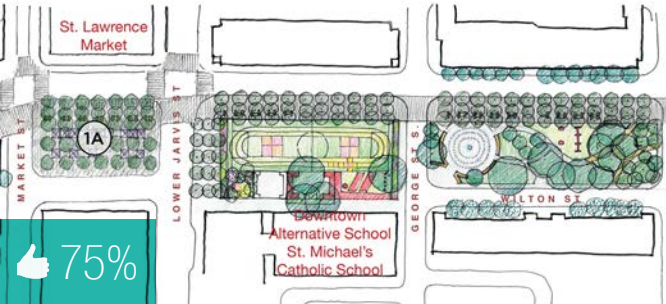
In **Concept Plan Option 1 - Heritage and Storytelling**, the survey results indicated strong support for these variables:

- decorative paving extending across the streets around the block south of the St. Lawrence Market
- bench /wall to separate the playground from the promenade between Lower Jarvis and George St.
- a dedicated fenced dogs off leash area between Lower Sherbourne St and Frederick St.
- decorative paving on Princess St.
- a berm/bench to create a small programmable space just east of Princess St.
- a fountain area to include smaller play fountains west of Hahn Place
- the soccer field maintained in Parliament Square Park

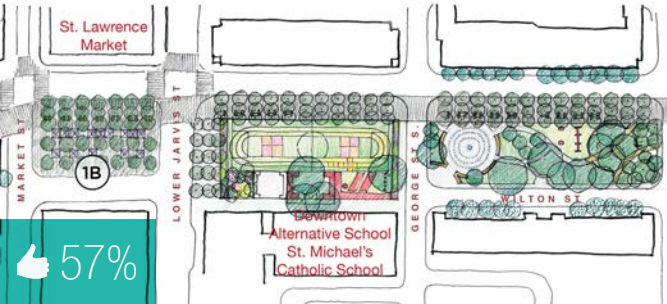


OPTION 2 - THE PROMENADE AND 7 PARKS

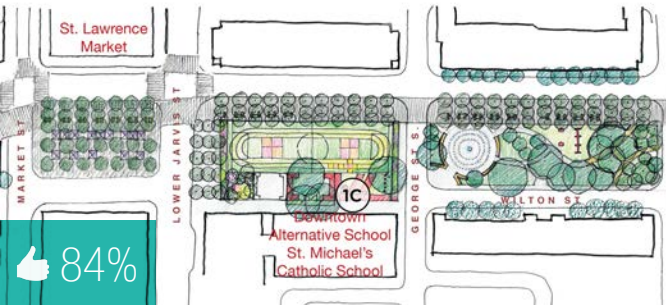
BLOCK 1 - 3: 1A  
Grove of trees in a grid



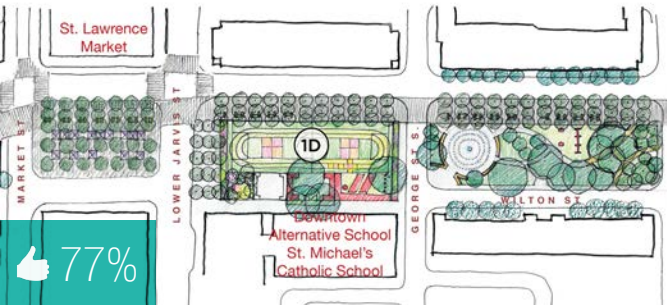
BLOCK 1 - 3: 1B  
Paved surface for flexible uses



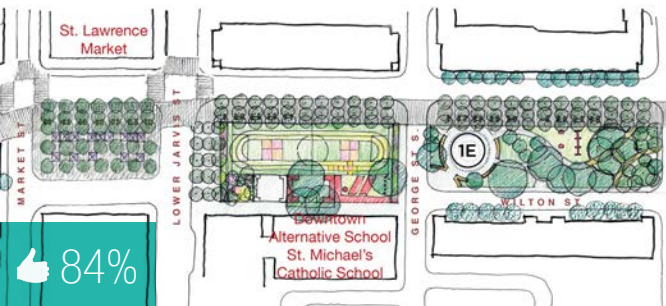
BLOCK 1 - 3: 1C  
Playground - Vertical play structures



BLOCK 1 - 3: 1D  
Playground - Multi-sport rubberized surface



BLOCK 1 - 3: 1E  
New splash pad in circular area



BLOCK 4 - 5: 2A  
Dedicated active sports field



#### BLOCK 4 - 5: 2B

No dog area



#### BLOCK 4 - 5: 2C

Same gardens as existing but with wider paths and more benches



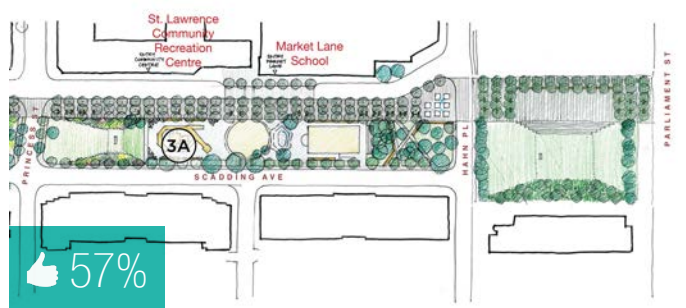
#### BLOCK 4 - 5: 2D

Potential area for on-leash dog relief area – unfenced with pea gravel surface



#### BLOCK 6 - 7: 3A

Playground is inspired by existing 1970s park design



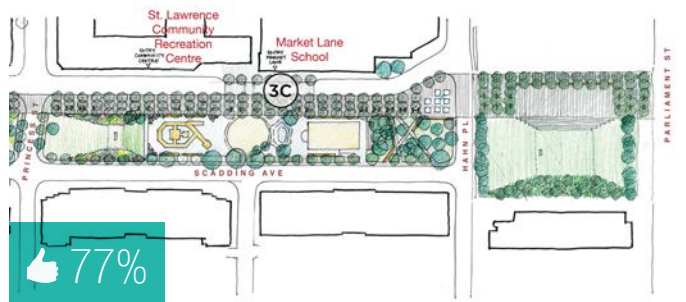
#### BLOCK 6 - 7: 3B

Expanded fountain with smaller jets for playing



#### BLOCK 6 - 7: 3C

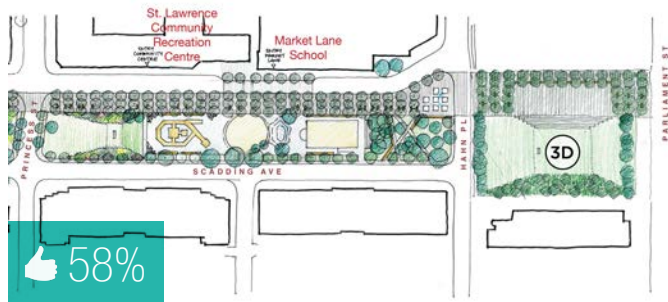
Narrow the road, add decorative paving and trees at Market Lane School crossing





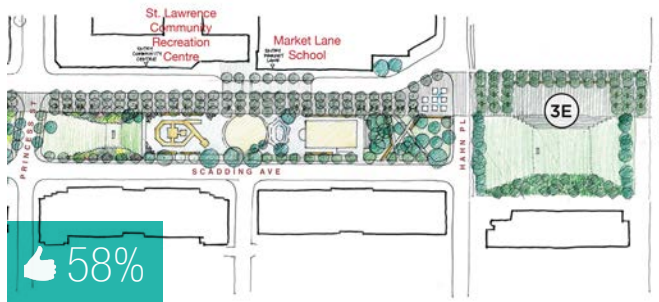
### BLOCK 6 - 7: 3D

Parliament Sq. Park – large, grassy viewing mound



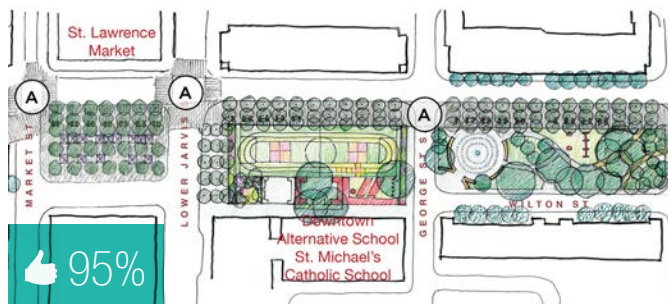
### BLOCK 6 - 7: 3E

Parliament Sq. Park – Tiered seating overlooking Parliament Sq. Park



### BLOCK 1 - 3: A

Pedestrian-friendly road crossing treatment

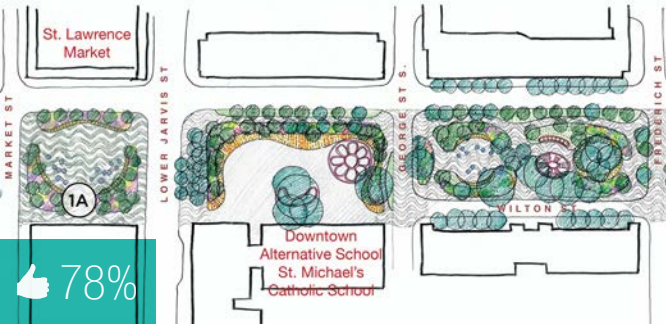


In **Concept Plan Option 2 - The Promenade and 7 Parks**, the survey results indicated strong support for these variables:

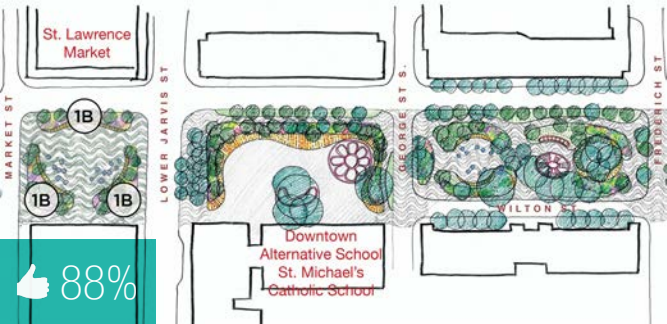
- a vertical play structure at Downtown Alternative School and St. Michael's Catholic School
- a new splash pad just each of George St.
- an expanded fountain with smaller jets for playing just west of Hahn Place
- pedestrian friendly road crossing treatment along The Esplanade

OPTION 3 - GARDENS AND WALKS

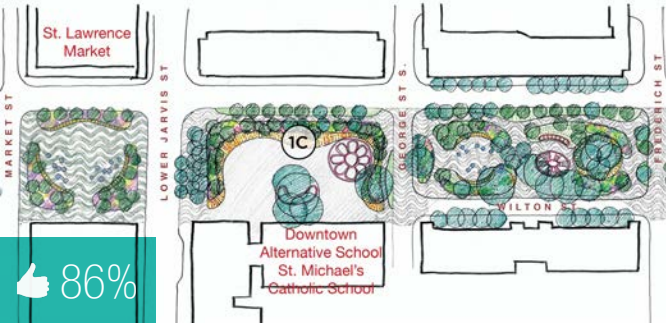
**BLOCK 1 - 3: 1A**  
Close Wilton Street to create a larger park block



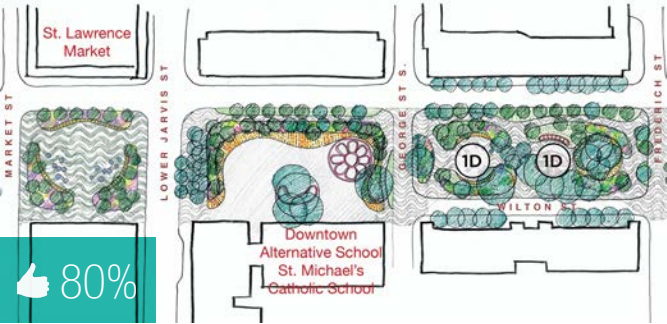
**BLOCK 1 - 3: 1B**  
Lush planting around outside of paved plaza



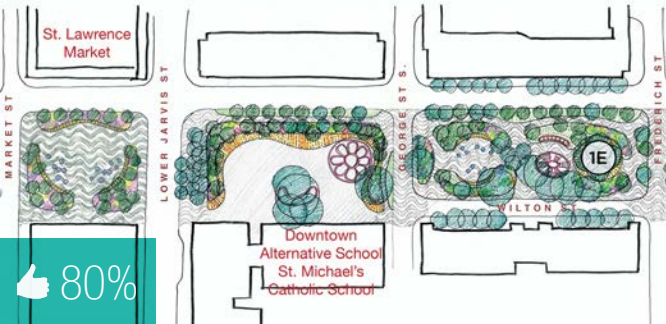
**BLOCK 1 - 3: 1C**  
Playground - Curvilinear seating/deck/play element around the edge of the playground



**BLOCK 1 - 3: 1D**  
Splash pad and playground in outdoor "rooms" with planted edges



**BLOCK 1 - 3: 1E**  
Removal of the "circle garden" concrete wall but reference it with circular pathway geometry



**BLOCK 4 - 5: 2A**  
Create a "great lawn" that is flexible for activities and surrounded by low berms and planting





#### BLOCK 4 - 5: 2B

Series of small, programmable pavilions, including a public washroom



#### BLOCK 4 - 5: 2C

Dedicated fenced dogs off leash area



#### BLOCK 4 - 5: 2D

Series of garden beds/ horticultural areas with seating and walkways



#### BLOCK 4 - 5: 2E

Water play area and horticultural display beds with seating and walkways



#### BLOCK 6 - 7: 3A

Maintain grassy berm



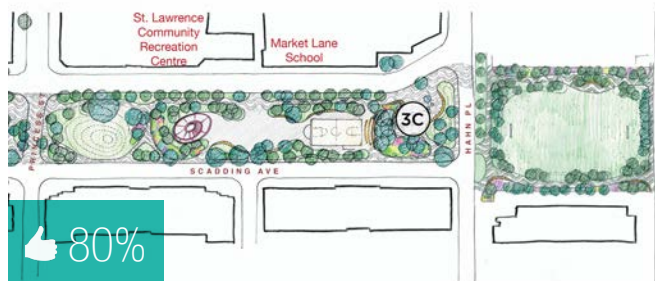
#### BLOCK 6 - 7: 3B

Playground equipment set "in the trees"



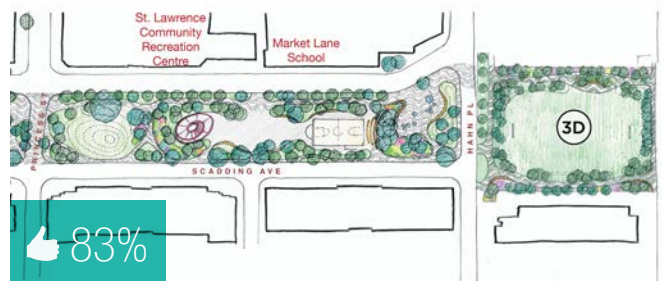
### BLOCK 6 - 7: 3C

Water play outdoor room



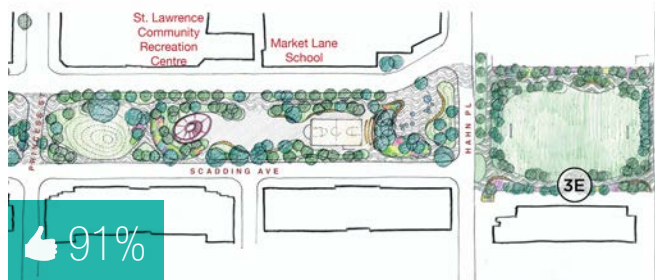
### BLOCK 6 - 7: 3D

Parliament Sq. Park - Maintain the soccer field



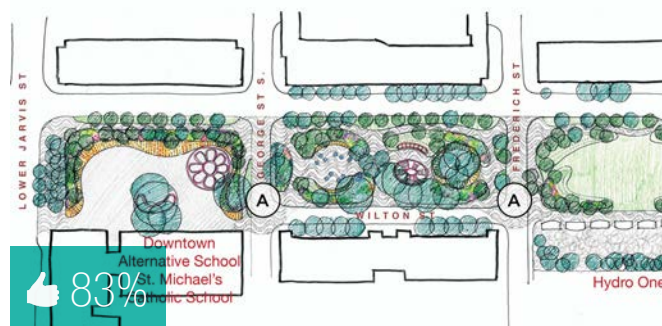
### BLOCK 6 - 7: 3E

Parliament Sq. Park - New walkway along the south side of the field, with seating areas



### BLOCK 2 - 4: A

Special paving treatment across George St and Frederick St



In **Concept Plan Option 3 - Gardens and Walks**, the survey results indicated strong support for these variables:

- lush planting around the outside of a paved plaza south of St. Lawrence Market
- a curvilinear seating/desk/play element around the edge of the playground at Downtown Alternative School and St. Michael's Catholic School
- splash pad and playground in outdoor rooms with planted edges between George St and Frederick St.
- removal of the circle garden concrete wall but with reference to it with a pathway
- a dedicated fenced dogs off leash area between Frederick and Lower Sherbourne St.
- a series of garden beds/horticultural area with seating and walks between Lower Sherbourne and Princess St.
- water play with horticultural display bes, seating and walks between Lower Sherbourne and Princess St.
- maintain the grass berm just east of Princess St.
- playground equipment set in the trees south of St Lawrence Community Recreation Centre
- water play outdoor room west of Hahn Place
- maintaining the soccer field with a walkway on the south side and seating areas in Parliament Square Park
- special paving treatment across George St. and Frederick St.

# Summary of Survey Results By the Numbers

---

The in-person and on-line survey results revealed that people had positive reactions to all three options. Almost all of the individual design elements in each option had more people who gave a “thumbs up” than a “thumbs down”. The responses to the in-person and on-line survey results were generally, but not always, strongly correlated. The average rating among all design elements was approximately 80% positive, considering both surveys together and assuming equal weighting for each.

It is important to remember that the surveys are not statistically valid in a scientific sense. They are meant to gauge community response in a general way to understand themes and preferences.

The design elements that stand out as having the most appeal, including elements with very high positive reaction (above 95%) and high positive reaction (90-95% positive) are listed below, and are outlined on the diagrams that follow.

## VERY HIGH POSITIVE REACTION (>95%)

### THE PROMENADE AND 7 PARKS

**Block 1:** pedestrian friendly road crossings at Jarvis.

**Block 2:** decorative fencing separates the school playground and The Esplanade promenade.

**Block 2:** access to the school playground from the walkway along the south edge.

**Block 2:** curvilinear pathways.

**Block 2:** the small swings and play equipment.

## HIGH POSITIVE REACTION (90-95%)

### GARDENS AND WALKS

**Block 1:** lush planting around the edges of the South Market Block.

### PROMENADE AND 7 PARKS

**Block 2:** vertical play structures in the school grounds.

### HERITAGE AND STORYTELLING

**Block 2:** a combination bench/wall element separates the school playground and The Esplanade promenade.

**Block 2:** water jets replace the wading pool in a circular play area.

**Block 3:** community horticultural areas.

### GARDENS AND WALKS

**Block 4:** dedicated dog off leash area.

**Block 5:** a series of community horticultural areas.

### PROMENADE AND 7 PARKS

**Block 6:** accessible picnic tables underneath the existing trees.

### GARDENS AND WALKS

**Block 6:** a water play outdoor room at the end of the promenade along The Esplanade.

**Block 7:** maintain the Parliament Square Park soccer field.



However, there were a few elements that had a stronger reaction against them (below 50% positive), as well as elements where public reaction was luke warm (50-70% positive) and these are listed below and outlined on the diagrams that follow.

## NEGATIVE REACTION (<50%)

### PROMENADE AND 7 PARKS

**Block 4:** Sports fields with no dog off leash area.

**Block 5:** the potential to host a dog off leash area (currently a garden block).

**Block 5:** viewing mound (currently a soccer field).

## LUKE WARM REACTION (50-70%)

### PROMENADE AND 7 PARKS

**Block 1:** a simple, flexible paving surface

### GARDENS AND WALKS

**Block 1:** a small, flexible paved area in the centre with water play jets.

### PROMENADE AND 7 PARKS

**Block 1:** using posts and fences in the school playground to reference the former (historic) wharfs.

**Block 3:** creating a playground to reference the former (historic) railways with linear playground equipment.

**Block 3:** maintaining the circle garden with the concrete wall around it and adding a wood deck surface.

### GARDENS AND WALKS

**Block 4:** providing a series of small, programmable pavilions including a public washroom.

### PROMENADE AND 7 PARKS

**Block 6:** creating a play structure inspired by the 1970's.

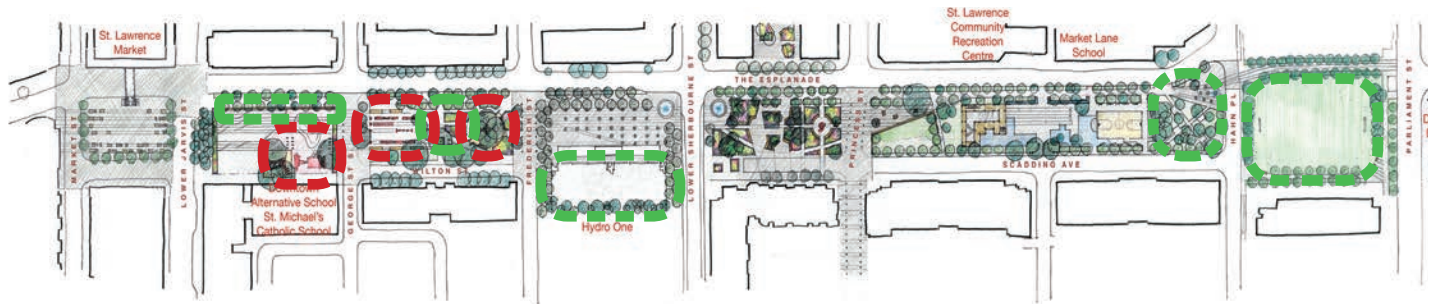
**Block 7:** providing tiered seating overlooking a flexible plaza area.

### GARDENS AND WALKS

**Block 7:** a new walkway along the south side of the soccer field with seating areas.

All of the rest of the design elements not noted above had a positive reaction, between 71 and 89%. A draft preferred plan will be created by taking some of the best ideas of each of the three options while balancing the priorities of the City of Toronto staff, community and business groups, the school boards, and the community. The draft preferred plan will be the subject of the next round of community consultation scheduled for the fall of 2019.

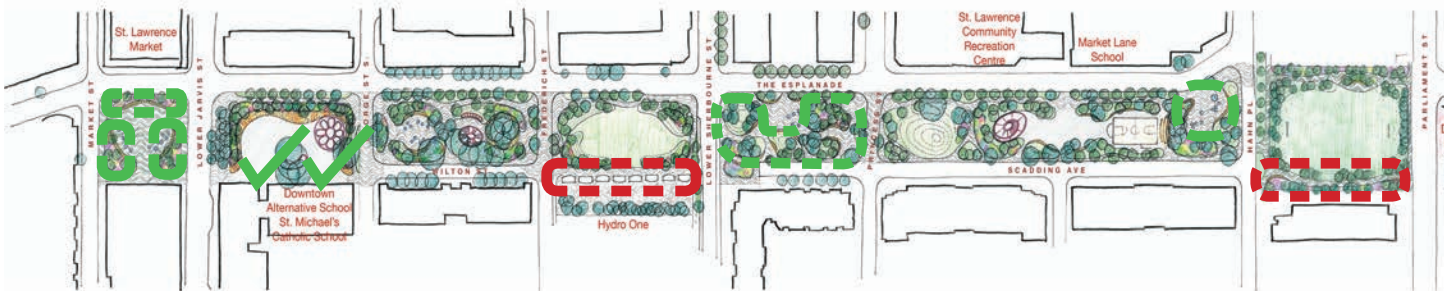
## Heritage and Storytelling



## Promenade and 7 Parks



## Gardens and Walks



Very Strong Positive Reaction (>95%)



Strong Positive Reaction (90-95%)



Luke Warm Reaction (50-70%)



Negative Reaction (<50%)

## Next Steps

The Preferred Concept Plan will be presented to the public for feedback in September 2019. Public meeting details will be mailed to residents and posted on project website.

# Appendix A: Recorded Notes

---

The following is a record of the additional notes that were recorded on the workshop sheets for each concept at both workshops.

## HERITAGE AND STORYTELLING

- For whole plan, need greener restful areas+ grass
- Preferred option
- Winter clearance of ice/snow is essential otherwise much of the park areas will continue to be inaccessible
- Love the effort to let 'old Toronto' show through the contemporary park. Very clever, good for kids to experience
- Increased senior related options need review
- Love adult/ mixed exercise area
- Lease favourite, not enough green for flood prevention
- Like heritage time
- Preference for this option
- Heritage should include Indigenous, water and rail
- Need to have green at both ends of the park
- Need for interpretation to help with storytelling
- Focus on indigenous stories, not the railway
- How are we addressing the traffic issues?
- We like the continuation of the lines and walk-through and historic references tone
- Low lighting to respect residents - bright enough to encourage females to walk at night, but respectful of people's apartments/ condos
- Get rid of ACORN lights for cars
- Adequate power sources+ receptacles + water sources along the route
- View east along Esplanade terminates at 1st parliament site, where Blockhouse (@curve in Esplanade) was. Suggest coordinating with Parliament study would be excellent view terminus
- Public art installations with railway and water/lake theme throughout
- Conflict currently at Parliament field: soccer usage conflicts with dog park usage: need to correct this (same as baseball field zone)
- Prefer the walk through the middle/pathways rather than the promenade version (pedestrians more in nature) peaceful, further from the cars
- Expand the market square park (eliminate the street beside Shoppers Drugmart)
- Community Centre – fitness programming could

integrate into the playground/ fitness exercise area

- Where could community movie nights take place? (like they do in Regent Park. David Pecaut Square Etc.)
- Considering theme – top pick
- Plantings need to be pollinators
- Water features need maintenance
- David Crombie tribute
- Separated bike path
- References to the site's industrial paths (8-yes; 13-no)
- The three historic references: (i) water – site was in lake at one time (gardens and walks theme); (ii) the rail corridor ran through it; (iii) Part of it was at the shoreline (Quays and Piers) (heritage theme) – are treated separately in the two themes. They could be combined or alternated with added effect.

## Block 1 – South of Market

- Extended paving will calm traffic
- Market + Wilton is dangerous
- Jarvis + Esplanade is a crazy intersection
- Connection to market is great, physically or visually
- Agree to close Wilton
- Wilton adds nothing but congestion (cars)
- Yes, to link from SLM 2nd floor terrace
- Is there option for winter skating?
- Love walkway to market
- Close Wilton Street
- Unique
- Too much hard space
- Like the bridge
- Railway lines are nice
- More trees
- Not good for seniors – 3 senior buildings at intersection of market and esplanade – rolling furniture not good
- Did not like – some coordination of the other two themes would be ideal
- Least favourite option
- Too much railway reference
- Indigenous design?
- Love movable benches
- Love bridge
- Love historical references



- Lighting critical
- Lighting as art
- Needs more bike parking
- Like bridge to park and lots of seating
- Not fussy about rail idea
- Gateway signage – indigenous + water + rail + Distillery
- Bridge won't work: loading dock
- Movable furniture – Space with access to market
- Decorative paving extending across streets around this park block – won't work as it is the only exit to Gardiner, traffic calming will be ignored
- Simple, flexible open space – will be too loud, need something to reduce traffic noise
- Add directions to Distillery District, tourists are always lost
- Really like the bridge if accessible
- Yes to movable furniture, if rails not elevated
- Quiet wheels rubber no metal on metal
- Flexible open space with some shade for summer around perimeter (umbrellas or trees)
- Skywall to park - excellent
- Modular/ movable seating – excellent
- Movable furniture – need to think on accessibility for seniors (seniors residency nearby)

### **Block 2 – Lower Jarvis to George**

- Wall to separate playground + street is important
- Field turf
- More greenery/ trees
- Don't like track idea – ugly
- Does not support the play areas for schools – this is important
- Railroad for many people is a symbol of civilization and has a very negative connotations – to be avoided
- You can do better than a mound
- Wharf posts will not be understood
- Lines on playground – I don't think it will be understood
- Add railway story feature to the walkway
- Bench/wall element – safety for children
- Concern with longevity, maintenance of rubberized surface

### **Block 3 – George to Frederick**

- Consider George + Frederick traffic calming. One way?
- Extend paving to Wilton
- Remove concrete circle
- Restrictions on dogs in park
- Upkeep for horticultural area is necessary
- Has consideration been given to an equipment/ exercise circuit around the park stations?
- Seniors play/intergeneration/multigenerational play
- Lacking field
- More sports
- Skating rink in winter
- Good idea to turn splash pad into ice rink
- Like pavilion and extra shade – seating area for skating rink
- Lines in road paving – they are overdone, just do it in some areas
- We like the play park, does not need to be linear, keep swings
- Maintain the circle garden – underused, replace with something else
- Need to have more green space in either community horticultural areas or large water play plaza
- Move linear to middle – George Street intersection too busy, protect kids with park on both ends
- Like the historic reference here
- Like the mixed play/ fitness equipment for all ages
- Some accessible machines for seniors would be good gathering place
- Community gardens+ school programming integration (re: sustainable agriculture/ environment)
- What about shuffleboard, low impact exercise?

### **Block 4 – Frederick to Lower Sherbourne**

- Love the water area
- Security issue with pavilion
- Potential for increased usage if water feature can be turned into skating rink in winter, this would benefit the water source requirement for dogs' fountain also
- Dog park should be grass or wood chip please
- Dog area needs shade
- Little dog+ big dog area
- Cannot leave dogs unattended

- Large water play plaza but not to replace green field entirely
- 3 of us want this block in the 'Gardens and walks theme'
- We need a dog park of at least this size, not overly secluded: soccer games and park recreation don't happen late at night, but dogs need to go out at night and female dog owners are nervous at night
- Large water plaza could be half as big and make more green
- Dedicated dog relief area – split on gravel or wood chips
- Small dog area
- More fields
- Between Yonge street and lower Jarvis Street the only green field for soccer track and field baseball
- Is POPS for everyone or just condo residents?
- Need to make sure that everyone feels comfortable in POPS space, especially marginalized youth
- Dog area absolutely necessary, they will go somewhere
- Prefer shade structures
- No washroom – high maintenance; people squatting
- No large water plaza, too large to use; keep it contained to current splash pad
- Gateway feature won't work, Gardiner will block the connection; hazard for kids+traffic
- Too much of a design stretch to connect to the water
- Divide dog area into large dog+small dog areas – entrance for dogs should be on the sides, not through waterpark (don't scare the kids)
- Large water plaza with neat shapes, colours (like Dundas Square)
- Water theme – good
- Best dog park schematic
- Gathering event/ performance spaces?
- Great washroom
- Well-lit areas for security
- yes, to water play area but add a linear barrier to separate kids from traffic
- gateway feature – include David Crombie statue somewhere

## **Block 5 – Lower Sherbourne to Princess**

- Connection to POPS + Princess St is great
- Bike hubs please discuss
- New condo development must provide for public dog area
- 65 Scadding (250) + 222 Esplanade (350)- total 600 units – have no dog provision so current park is nothing more than a dog toilet
- One big dog park does not work, 2or 3 small areas, one for small dogs, one for large dogs
- Great idea to explicitly connect with the time and space condo park across the Esplanade
- Why pave over a park to unify? Not enough green space overall. You don't pave Central Park to show that it is Central Park
- Where is the grass?
- Decorative paving could make the connection to the POPS, to Princess Street is too much of a stretch
- Like having 'one room' dedicated to flowers and seating
- We like water feature to create soothing ambience; does not need to reference docks; no one will get it, they can walk to the waterfront
- The space above this block is not a park but a POPS
- Too much hard surface, same soft landscaping needed

## **Block 6 – Princess to Hahn**

- Love programming space
- Fence around playground
- Add safer crossing from school to park
- Yes, to integrating the rail corridor underlay with the wharf and quay and dockside buildings underlay
- Create information tableaus along the promenade with the history of the area
- Senior's exercise
- Playground referencing rail lines – more greenery, does not need to have the docks theme
- Fountain are- unnecessary if large water feature already proposed in block 4
- Esplanade need bike lanes
- We want to keep the hill; increase slope down to east, so kids can slide from Princess Street to east safely (especially tobogganing)

- Playground – should not just be concrete, should have hardscape for general play
- Dock reference will not be understood
- Large upper-level playground – similar to AGO
- Fountain area - Fencing or features to delineate traffic
- Playground referencing docks – too much hardscape in playgrounds, reduce it so there is some space to kick a ball, it should not be 50% of the playground
- Add more play structures for the school kids to play on – more swings
- Bleachers should not face west; we play in the evening and can't look into the sun; move them to north or east side; they are never used because they are uncomfortable in the sun
- Berm/Bench creating small programmable space – consider those who use it as a toboggan hill
- Multi – generational
- Upper level playground – accessible? Multi-generational?

### **Block 7 – First Parliament Park**

- Wayfinding to distillery
- More seating in the soccer area for more proper watching
- Separate bike lane/ separate from pedestrians
- Soccer field does not get used as often as suggested
- Area has poor drainage
- Path on the south is great idea-much needed
- Maintain soccer field – yes, but maintain drainage
- Multi-use soccer field
- Too much traffic in the southwest corner, other corners are quieter
- Soccer field – install proper drainage
- Proper infrastructure to improve for the two schools that use it
- Conflict with dog walking usage – can we make this a dog-free zone?
- Community events + kids programming
- Prefer the mound version from promenade and parks theme
- Drinking fountains?
- Add baseball too

## **PROMENADE AND 7 PARKS**

- Like Wide Promenade
- Need dog park to share with sports field

### **Block 1 – South of the Market**

- Wilton Market is dangerous
- Least interesting of 3 themes
- Close Wilton St.
- Walkway from market to park
- Visually back-end of market is disappointing
- each separately good but if you have natural trees then it should be more natural pathways, shade gardens and such
- Wilton st should be shut off- more park space
- best use of new park
- this is the least favored option with a couple of exceptions (4) (18) (19) (20)
- note 3 seniors buildings at market + esplanade
- should be more focus on walker - accessibility
- too tough to use for programming
- focus on urban forests prevention of disease, tree loss - don't wait for all the trees to be dying
- how will these plans work in winter? Plowing walks?
- simplify concept so everyone understands
- love strong promenade
- indigenous input
- indigenous plant
- need plenty of seating for market

### **Block 2 – Lower Jarvis to George**

- Security concerns with covered area
- Playground equipment for different ages
- + field turf
- level grading!
- best playground of the three - more students
- good support for schools
- expand teaching garden
- keep seating on south side of Esplanade
- not fond of the track
- key stakeholder is school
- best for kids
- it would be nice to see grand promenade combined with some aspects of gardens and walks so it's not so rigid and linear



### **Block 3 – George to Frederick**

- Love the water jets
- Splash pads - great idea in all themes. - how reliable are they? - if not, not cost effective
- but clear paths in winter
- maintain lady bug/keep lady bug
- remove concrete
- wading pool good for children to learn to swim
- splash pads already in multiple areas
- could splash pad be ice rink in winter?

### **Block 4 – Frederick to Lower Sherbourne**

- Worry dogs will use area anyway
- dogs do need somewhere to play & go - if not dedicated then they will use the green spaces
- see questions on soccer field on “Gardens & Walks” Page.
- need small + large dog area
- No dog area is inconvenience to dog owners
- Dogs will do business in all other park areas
- dogs will be off-leash anyway, just in un-designated areas
- no dog park = unsocialized, more aggressive dogs.
- less exercised dogs = more barking in apartments
- no relief area = more dog poop everywhere
- need fenced dog park
- need off-leash area
- not fair to dog owners
- relocate Hydro One
- my favorite plan mainly because of the widening of the Esplanade harkening back to the original walks + gardens trust. Wide + green
- no need for 2 soccer fields
- need for dog park
- trees in need
- best furniture quality benches
- need a dog area
- all plans need to address bike park/bike lane
- need dog area

### **Block 5 – Lower Sherbourne to Princess**

- how much of this block would DOLA require
- too small!
- potential dog area need to be fenced

- keep dog area in Hydro One space
- bike hub with
- A - no room for bikes
- kind of small for number of dogs in our area
- must have designated dog park
- we like the active/peaceful/active/peaceful sequence in (13)
- if no dog area (19) becomes the de facto area

### **Block 6 – Princess to Hahn**

- like street crossing for safety
- safer crossing = good idea
- take out parking on street to allow more room for playground
- is similar to St James
- not safe intersection for play - water feature - not splash pad
- link to market lane is a great idea
- not sure how narrowing Esplanade in one area will work
- Make sure that ugly underpass is removed from Market Lane school playground.
- Maybe close the Esplanade at rush hour to all traffic except buses & emergency vehicles
- talk to kids
- David Crombie recognition (eg. statue)

### **Block 7 – First Parliament Park**

- leave as soccer field
- should be multi use. What about market lane and community centre
- Soccer field needed
- facing an existing seniors building is a mistake
- maintain soccer field
- this option too regimented
- bike path needs to be separated
- needs to accommodate performance venue

## GARDENS AND WALKS

- the best one
- curvilinear paths
- decorative paving extending across north south streets
- if we could add the promenade of trees it would be great
- best design
- this design is most respectful of Indigenous

### Block 1 – South of Market

- My favourite
- Ties nicely into Berczy Park
- Walkway to Market
- Extend paving to The Esplanade in this block
- No connection to South Market
- Like the look of garden, but would like a bridge
- Promenade too narrow
- Snow plow can't follow a curved line
- Wavy pattern is too heavy
- Many traffic problems
- Lush planting will help block traffic noise
- Too much traffic for kids to have water play here, more adult oriented
- Better for seniors as there's 3 seniors buildings at the corner
- Preference for a model that combines the Garden + Walks and The Promenade
- Traffic calming needed on the Esplanade
- Ensure cars can exit Market St. at south end if Wilton St is closed
- Like flexible area in centre – materials to be determined
- Most favourite option
- Love the organic curving nature allowing for peaceful areas as well as activity areas
- Reminds me of Corktown Commons
- Add skywalk from Market to lower Jarvis Square
- Like the curves
- Love the street closure
- Like continuous paving across streets
- Like plants
- Closing Wilton could create traffic problems
- Esplanade need traffic calming and a transportation plan
- Needs more bike parking

### Block 2 – Lower Jarvis to George

- Maintenance of wood?
- Planter needs to be high enough to keep kids out and narrow to keep squatters out
- Like the greenery in the playground
- Curvilinear seating has potential to be good
- Not enough play structures
- Keep general hardscape to less than 25%
- Promenade is too narrow right now, straight line right now, won't follow if it's curvy
- Good support for schools
- Shade for all play areas
- Covered play area
- Students want a lot of green space
- Please keep clean, always dirty
- Add outdoor classroom pavilion
- Skating
- I prefer more natural to non organic structured (like rails) because nature doesn't get old or dated
- You can easily freshen up garden elements
- Not so easy with train tracks etc.

### Block 3 – George to Frederick

- Save the trees
- Walkway from Woodsworth to Park
- Traffic calming throughout St. Lawrence Neighbourhood
- Bathroom closer to children's area
- Best place for kids water feature
- Keep the circular wall with pink roses blooming every spring
- Maintain some exercising equipment for seniors
- Crombie art to be maintained or relocated
- Safe and accessible
- I like the water plan is woven through out not just in one or two spots
- Leave the wall
- City service workers need to manage and maintain gardens

### Block 4 – Frederick to Lower Sherbourne

- Dog area must be fenced
- Small and large dog area needed
- Good that there's a dog park, but the trees and pavilions seclude the area

- As a single woman, I'd be afraid to take my dog there at night – which I currently do daily
- Adult exercise equipment (+seniors too) would be great
- More walkway north ward so more dog park
- Want dog park larger and more visible for safety
- Dog area must be fenced
- Danger of jay walking from new walkway
- Need flexible green space on both ends – place to kick a ball
- No public washrooms
- We often have garage sales the pavilions are good for that
- We often have lemonade stands or garage sales – the pavilions should be set up along the esplanade for better use
- Often set up by basketball court
- Appreciate a smaller dog park
- Preserve a dog park and leash off dog park that's fenced
- Ensure wheelchair friendliness everywhere
- Need safety provisions across Sherbourne
- A designated dog park is necessary
- Public washrooms are a necessity
- Add David Crombie commemoration
- Make smaller dog relief area
- No picnicking next to dog park
- Pavilions – community activity picnics
- Like public washroom idea
- Like the smaller dog area

### **Block 5 - Lower Sherburn to Princess**

- My favourite
- Ties nicely into Berczy Park
- Walkway to Market
- Princess Park should be included in the Scope of Work
- Garden beds need to be more along the lines of pavement within greenery rather than some greenery placed along pavement
- Location shown for water play should be a quiet area
- We like the water feature, not for kids play – we already have 2 – good for ambience
- Bike hub at south west corner of this block
- We like the grass
- Less pavers and more grass
- Please add Princes Park to plan – it has been

neglected for years and has broken stairs, dead trees, not maintained garden area

### **Block 6 – Princess to Hahn**

- My favourite
- Ties nicely into Berczy Park
- Walkway to Market
- Love the lush planting zones but would like to see the water aspect from Heritage and Storytelling theme
- Replace the grassy knoll with something better
- All playground
- Enhance the hill – great for kids roll down in summer and toboggan in winter
- Ensure they roll eat away from traffic
- Use a low fence or low wall like at Jarvis and esplanade to separate playground
- Lush planting at edge of playground is a nice idea, but kids will destroy planting, shrubs might survive
- Good to have shade or playground
- Two play structure
- Hardscape area for general play less than 25%, softer survive
- No trees in playground, they will die “man made” shade
- Good support for schools with proper playgrounds
- Add a drinking fountain
- Add wooden seating at knoll
- Dog owners in 65 Scadding and 222 Esplanade constantly use the area as a dog toilet year round even with current dog park in baseball area – please address this I like concept of grassy knoll for uses such as theatre in the park, festivals and other events
- Group split on playground – elevation because of supervision required for schools and day care – also multigenerational
- Washrooms near water features, wet kids need changing
- Easily incorporates Indigenous artistic element
- Great representation of water culture
- Good for sledding
- Picnic tables added
- Good lawn
- Small dog relief area
- No small dog relief area



- Seems like a lot of water
- Why do we need 4 splash pads
- Water features require more maintenance

### **Block 7 – First Parliament Park**

- With bike lane along south side of the field
- Improve grassy area to tolerate high volume of use
- Better drainage needs to be implemented
- More trees
- Like the new south path and seating
- Drainage issues needs to be addressed \$\$\$
- Where is the First Nations theme?
- More seating in the soccer area for more proper watching
- Maintain consolidated sport space at this end
- Accommodate bikes on narrow lane
- Baseball and soccer
- Skating rink in winter