

July 19, 2019

## Don and Central Waterfront Wet Weather Flow System: New Underground Shaft at Bloor-Bayview Off-Ramp

Contract: 17ECS-MI-04DC

Stage 1 Start Date: August 6, 2019.

Stage 1 Expected End Date: December 2023

*Timeline is subject to change. Future notice to be provided.*

The Don River and Central Waterfront Wet Weather Flow System (DR&CW) will help improve the water quality of the Don River and Lake Ontario. Overflows of rain and snow from extreme storms will be held in a new network of underground shafts and tunnels until there is capacity to clean it at Ashbridges Bay Treatment Plant.

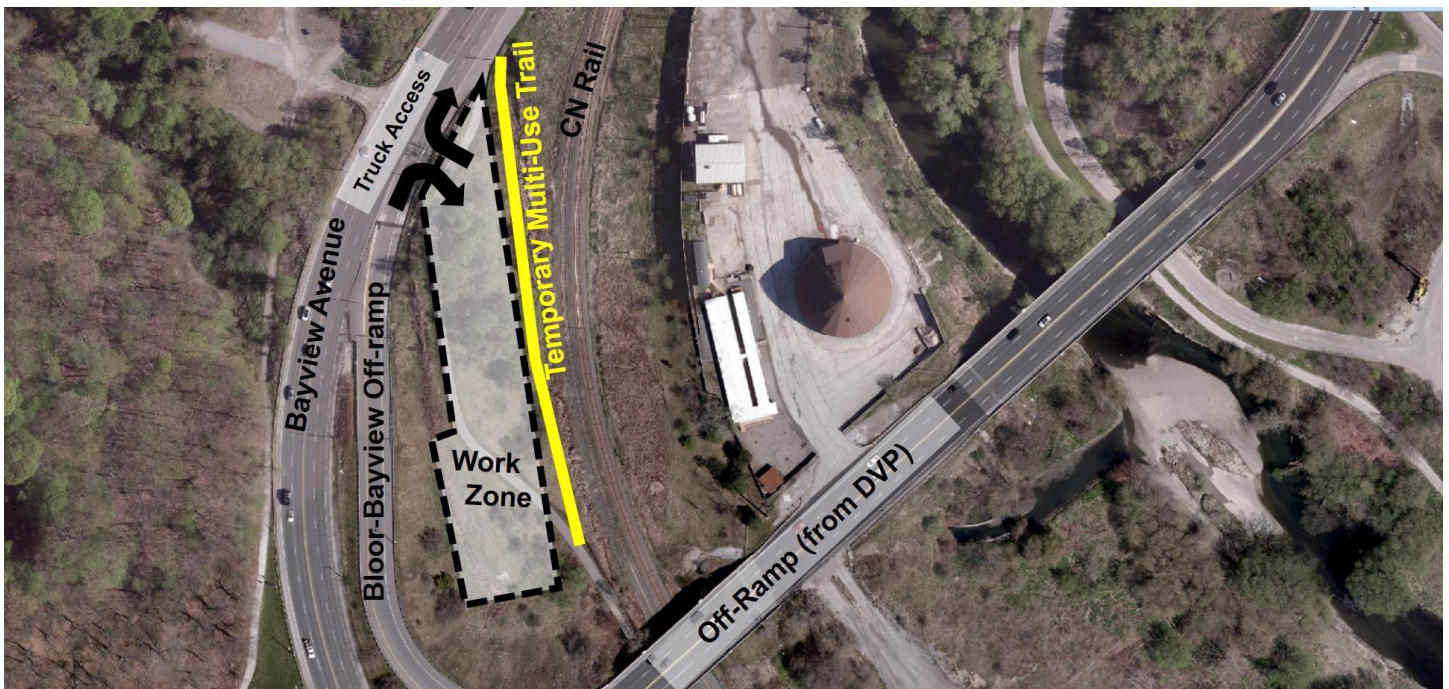
The following work is the first of three stages to build the DR&CW and includes:

- A 10.5 km tunnel from Coxwell Ravine Park, along the Don River to Ashbridges Bay Treatment Plant
- Five (5) large storage shafts and 11 connecting shafts which will connect to the tunnel

Starting Tuesday August 6, 2019 one of the 11 connecting shafts will be built on the City-owned property between the Bloor-Bayview Off-ramp (northbound) and CN Rail corridor. Please see map below. The anticipated completion date for construction at this site is November 29, 2019.

This project is part of the Council-approved 2017-2026 Capital Works Program. Learn more about the DR&CW, visit [www.toronto.ca/drcw-project](http://www.toronto.ca/drcw-project)

### MAP OF WORK AREA









Construction will take place behind site fencing and involves:

- Site clearing (including trees and shrubs), installing fencing and setting up materials and equipment
- Installing shaft support and excavating the connection shaft
- Removing materials from the shaft to offsite disposal facilities
- Installing concrete lining

## WHAT TO EXPECT DURING CONSTRUCTION

You may experience dust, noise and other inconveniences. Service interruptions are not planned or anticipated for the work. The City will make efforts to monitor and reduce the impacts. No impacts to nearby properties, residential homes or businesses are anticipated. We appreciate your patience.

	<p><b>Work Hours:</b> Work will take place</p> <ul style="list-style-type: none"> <li>• Monday to Friday: 7 a.m. to 7 p.m.</li> <li>• Saturday: 9 a.m. to 7 p.m.</li> </ul>
	<p><b>Site Access:</b> Construction vehicles will enter and exit the site from Bloor-Bayview Ramp</p>
	<p><b>Traffic Management:</b> Efforts have been made to manage traffic in the area for the safety of workers, road users and residents. No significant delays are expected during construction.</p> <ul style="list-style-type: none"> <li>• There will be no impacts to Bloor-Bayview Ramp</li> <li>• Delivery of large construction equipment will be planned to minimize impact to the community and temporary lane closures</li> </ul>
	<p><b>Tree Removals:</b> A total of thirteen (13) trees will be removed from the site. A tree replanting plan will replace all thirteen (13) trees following City of Toronto Parks and Toronto and Region Conservation Authority policies. In some cases, one (1) removed tree may be replaced with three (3).</p>
	<p><b>Restoration:</b> Areas affected by construction will be restored.</p>
	<p><b>Pedestrian and Cycling Access:</b> Construction will impact the Bayview Multi-Use Trail. Prior to this work, a temporary trail will be constructed to continue to provide a trail connection. See map on page one (1). Signage will be posted in advance to direct trail users.</p>

## MORE INFORMATION:

<p><b>Project Manager</b></p>	<p>Tatiana Chiesa, P.Eng., 416-338-5490 Tatiana.Chiesa@toronto.ca</p>
<p><b>TTY Hearing Impaired Service</b></p>	<p>416-338-0889 (7 days/week, 8 a.m. to 5 p.m., closed holidays)</p>
<p><b>General inquiries</b></p>	<p>311</p>
<p><b>Website</b></p>	<p><a href="http://www.toronto.ca/drcw-project">www.toronto.ca/drcw-project</a></p>

Thank you for your patience. Building a great city takes time. Better infrastructure for all of us is worth the wait.