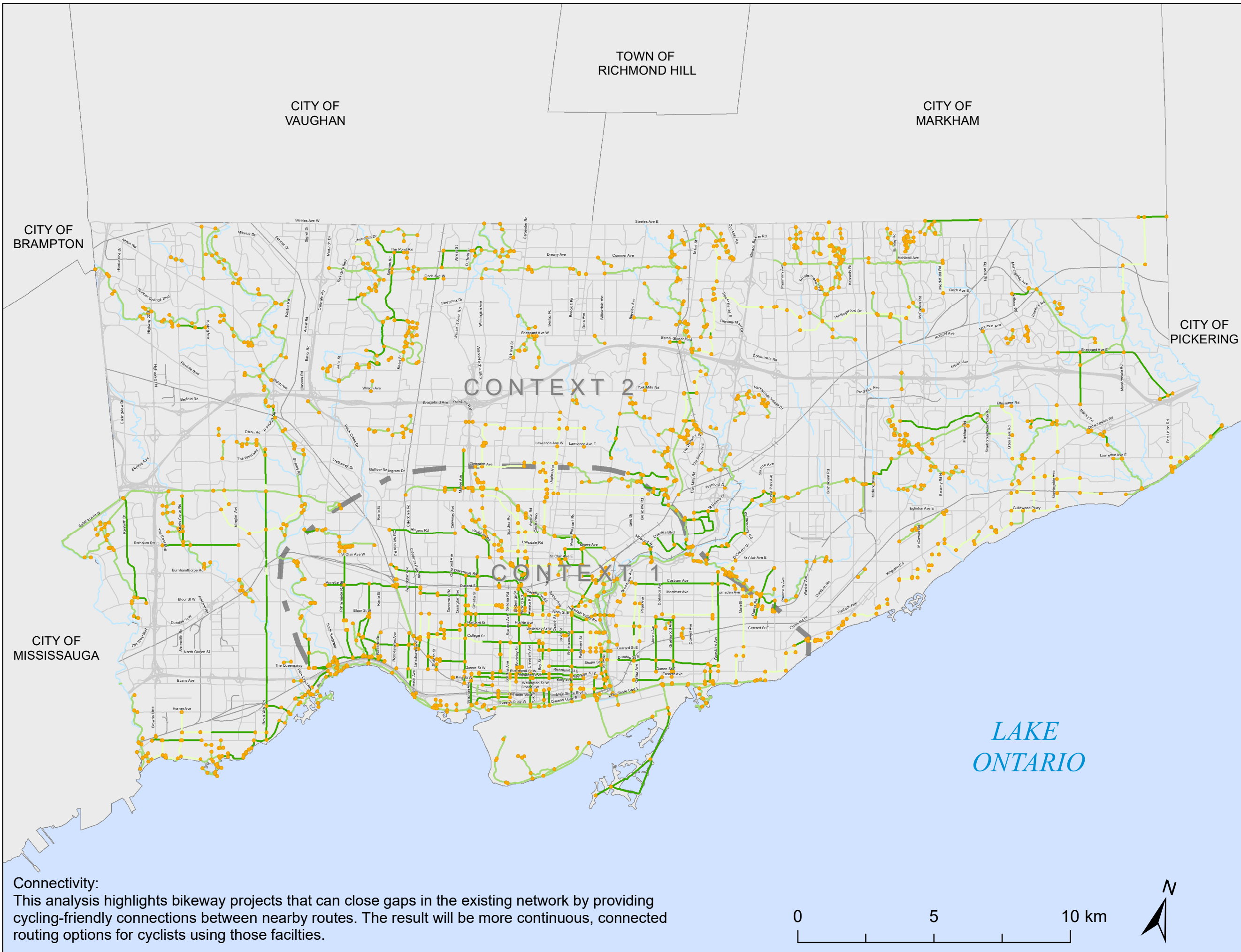


Planned Cycling Network Connectivity



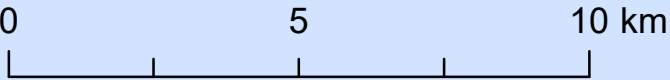
Connection or Terminus

Existing Cycling Network

- Trail
- On-Street Cycling Facility
- Signed Route, Arterial Sharrows or Edge Line
- Context Boundary



Connectivity:
This analysis highlights bikeway projects that can close gaps in the existing network by providing cycling-friendly connections between nearby routes. The result will be more continuous, connected routing options for cyclists using those facilities.



Data Source: City of Toronto
Projection: NAD 1927 MTM 3
Cartography: Cycling Infrastructure and Programs, City of Toronto
Date: March 2019

