

King-Parliament Secondary Plan

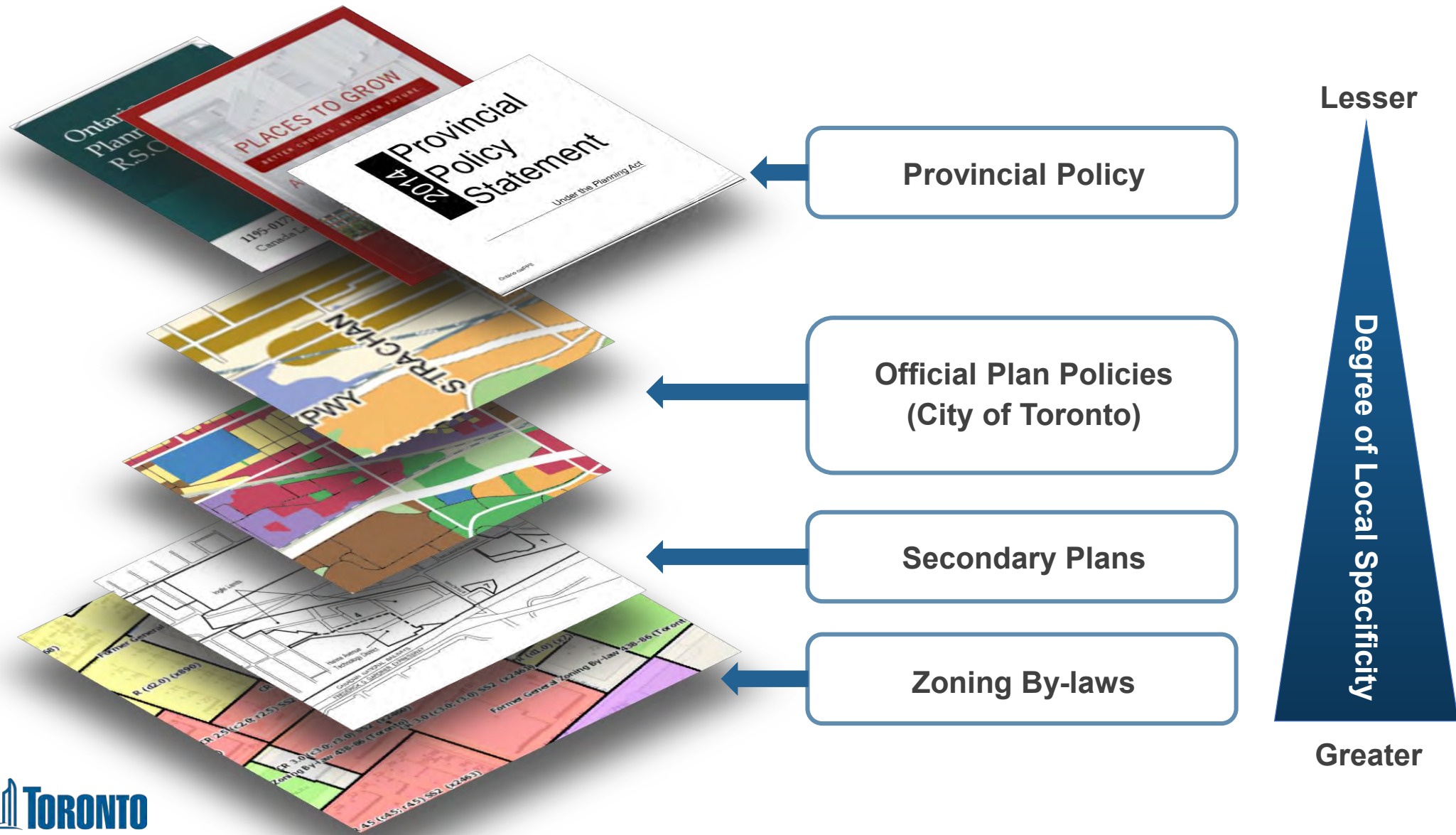
Parks and Public Realm

9 June 2019



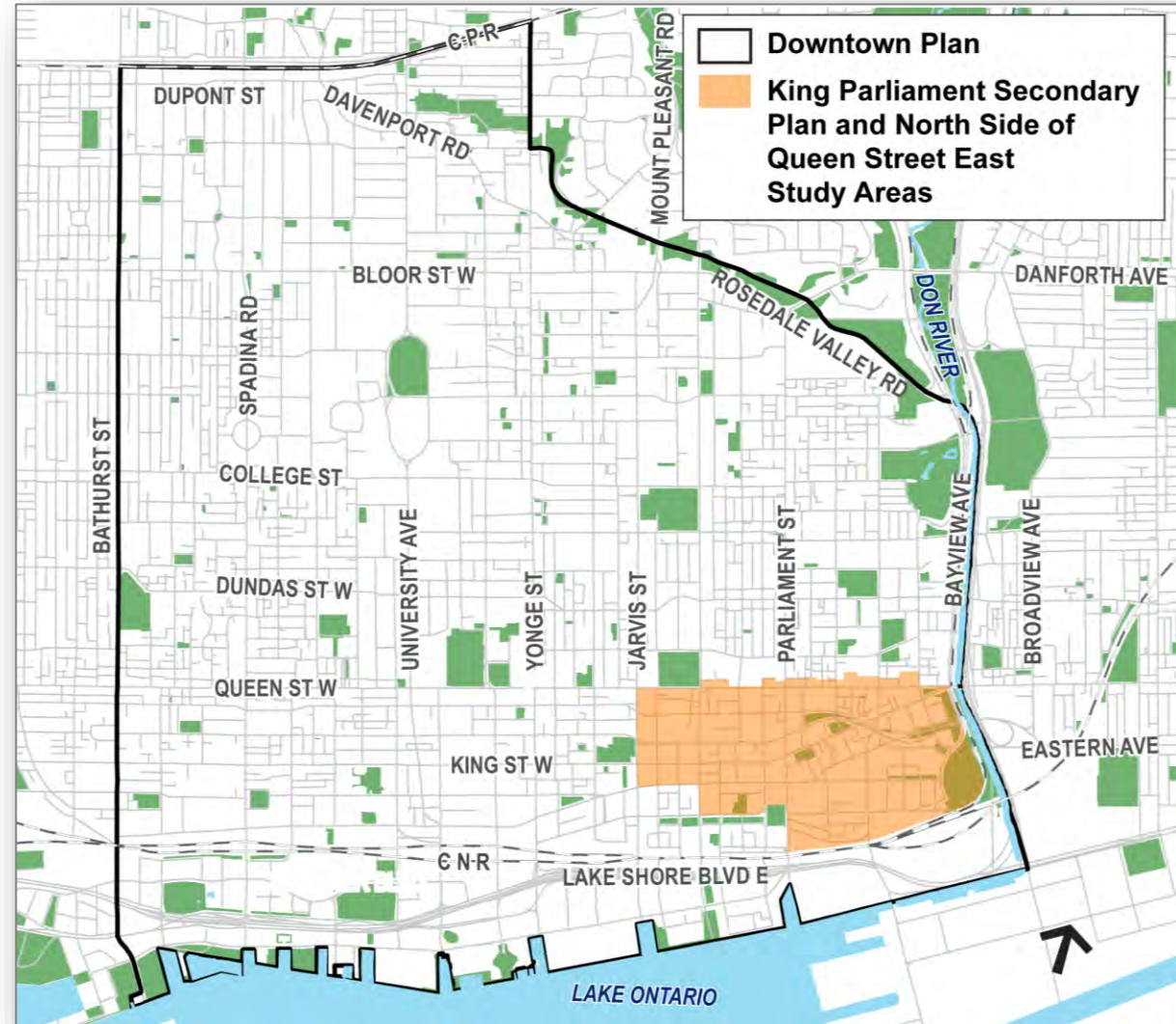


Planning 101

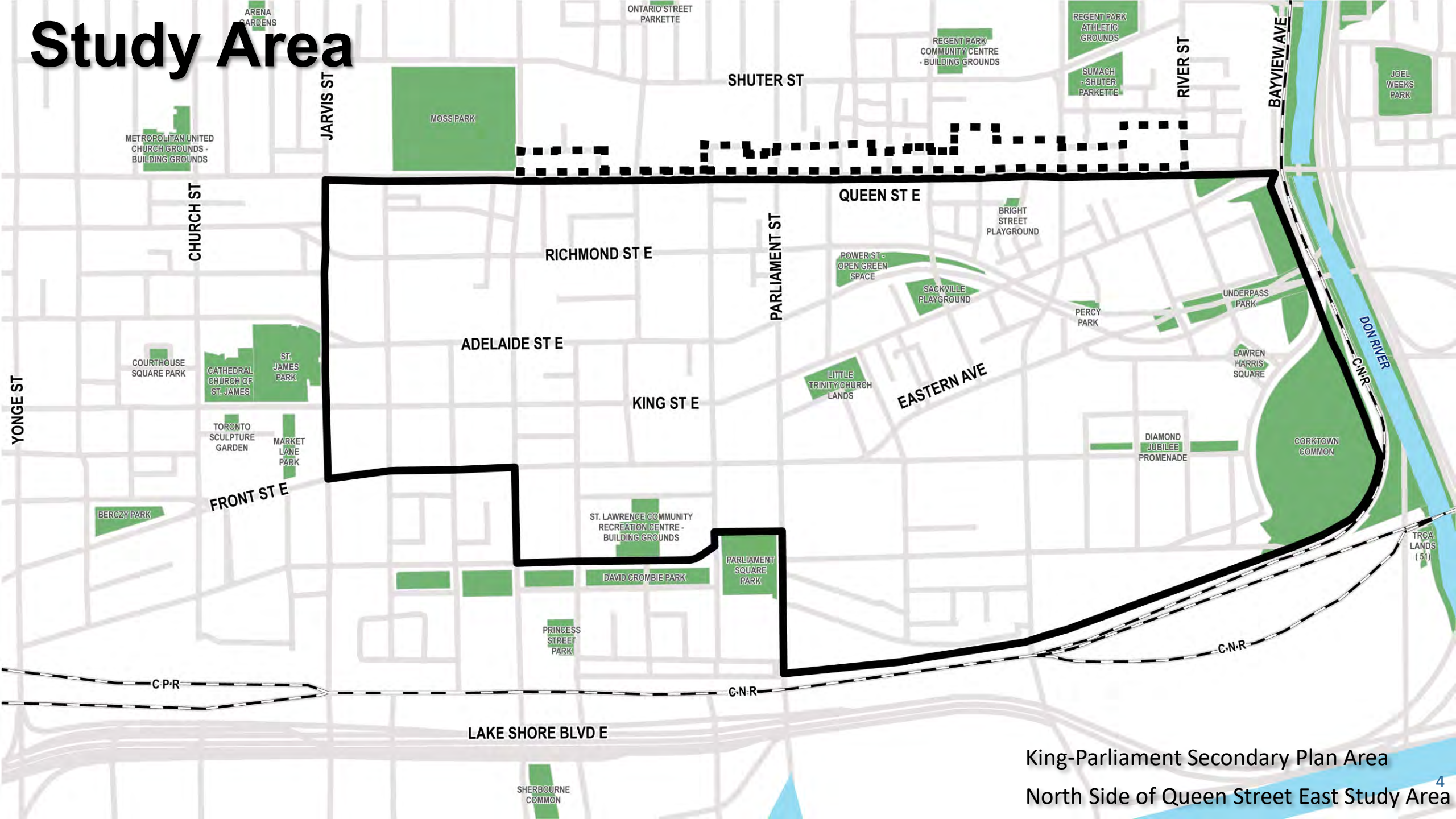


Downtown Plan Official Plan Amendment (OPA 406)

- The **Downtown Plan** (OPA 406) is the outcome of the four-year TOcore: Planning Downtown study.
- It brings forward a comprehensive policy framework to shape growth in Toronto's Downtown over the next 25 years.
- The Downtown Plan was **adopted by City Council** in May 2018.
- The King-Parliament area is within the Downtown Plan boundaries. The two plans will work together to manage growth.



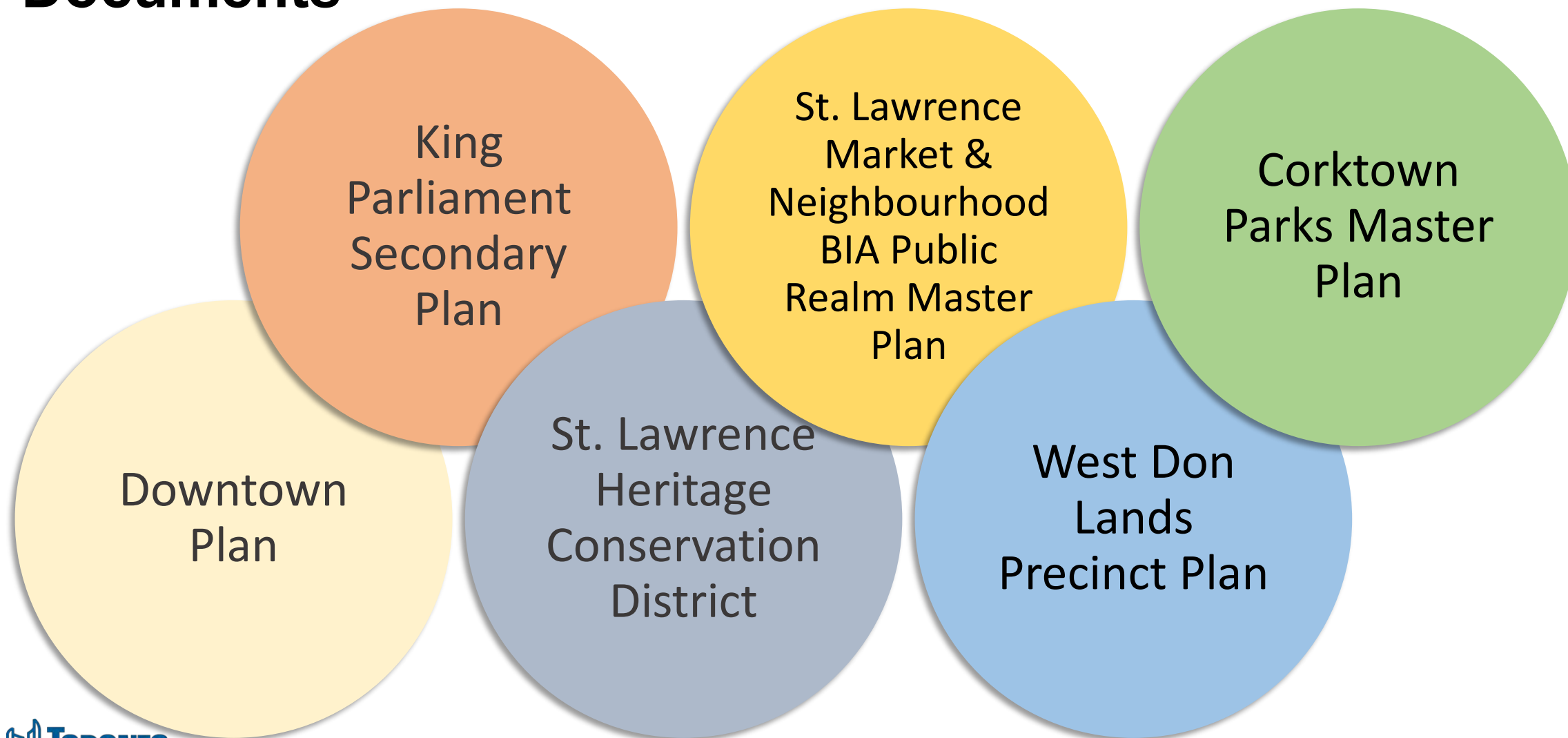
Study Area



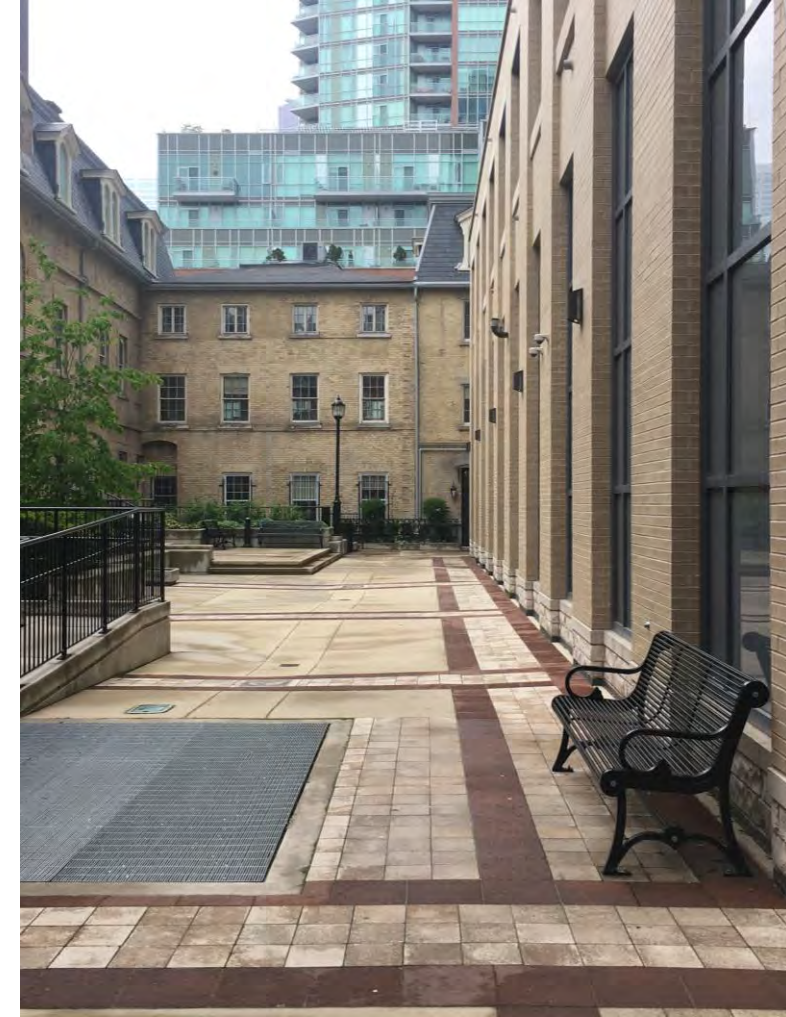
King-Parliament Secondary Plan Area

North Side of Queen Street East Study Area

Aligned Guiding Documents



What are Parks and Public Realm?



Parkland Rates



18 m²

PARK AREA/
RESIDENT & EMPLOYEE
(2016)

City-wide



1.8 m²

PARK AREA/
RESIDENT & EMPLOYEE
(2016)

Downtown

4 Leading Principles

Acquire &
Expand

Connect

Improve

Share

An aerial photograph of a coastal urban area, likely T0core, showing a grid of streets, green spaces, and a waterfront. The text 'T0core: Downtown Parks & Public Realm Plan' is overlaid in the center. Dashed lines on the map indicate specific areas of interest, including a waterfront park area with a playground and a larger area near the water's edge. The map also shows a large body of water on the right side, with a small island or peninsula in the foreground.

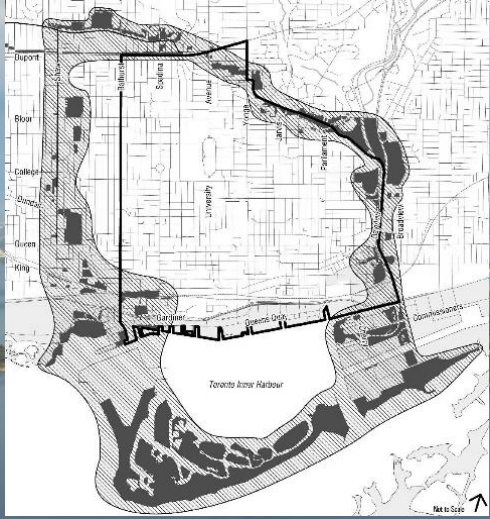
T0core: Downtown Parks & Public Realm Plan

Downtown Parks & Public Realm Plan

Five Transformative Ideas:

- Core Circle
- Great Streets
- Shoreline Stitch and Rail Deck Park
- Park Districts
- Local Spaces: laneways, parkettes, schoolyards etc.

The Core Circle



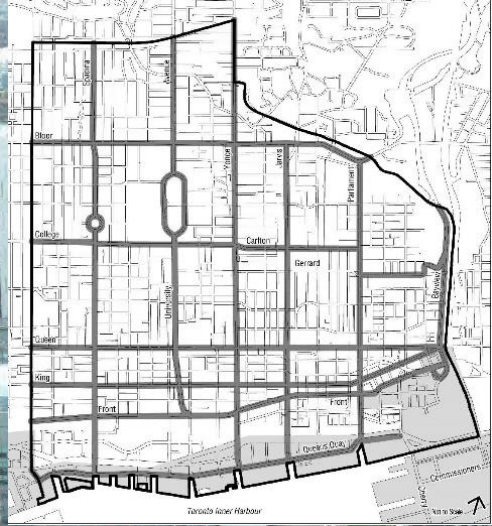
The Core Circle

South East Quadrant:

- Improve access to the valley
- Pursue Indigenous placemaking
- Promote water-based recreation on the Don River
- Explore access options to the Toronto Islands
- Undertake a Toronto Islands Management Plan
- Consider establishment of a pier or floating dock
- Implement bridges over the heads of slips



The Great Streets



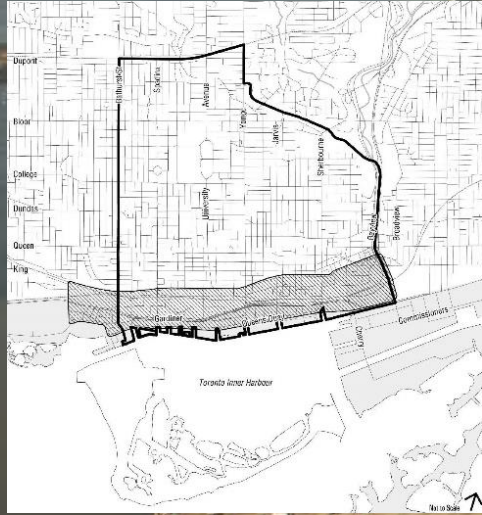
The Great Streets

South East Quadrant:

- Spadina Avenue/Road
- **University Avenue**
- **Yonge Street**
- **Jarvis Street**
- **Parliament street**
- **Bayview Avenue**
- Bloor Street
- **College-Carlton-Gerrard Corridor**
- **Queen Street**
- **King Street**
- **Front Street**
- **Queens Quay**



The Shoreline Stitch



The Shoreline Stitch

South East Quadrant:

- Prioritize pedestrian comfort
- Identify small but impactful interventions
- Improve pedestrian realm on Front Street
- Consider Station Street as a shared street
- Advance implementation of Council-approved Pedestrian promenade Plans



Park Districts



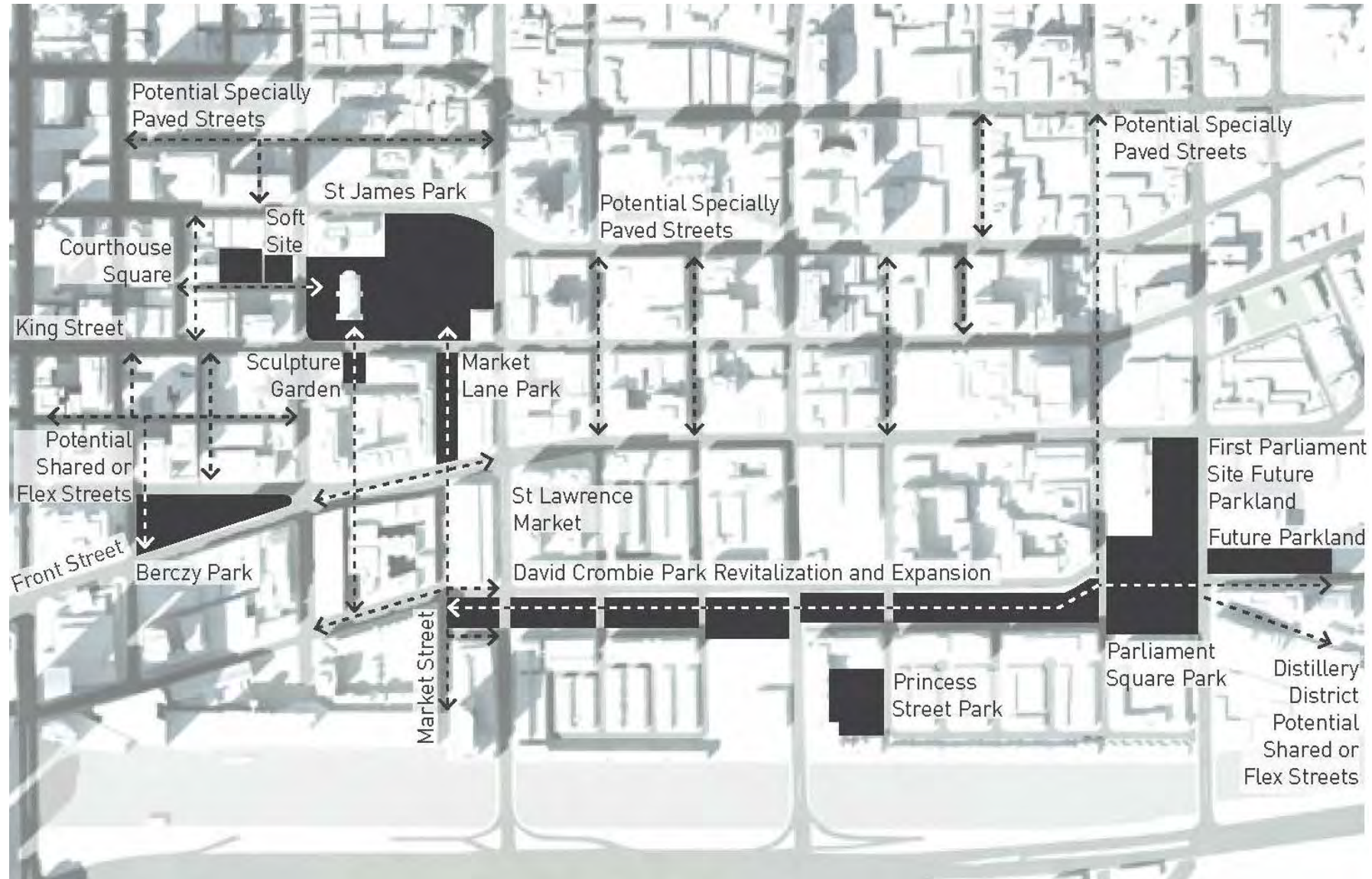
Park Districts

Park Districts within South East Quadrant:

- **Civic Precinct**
- **The Garden District**
- **Old Town-St. Lawrence Distillery**
- Ryerson University
- Regent Park
- West Don Lands
- Lower Donlands
- Lower Yonge-East Bayfront
- Corktown Parks
- Central Waterfront



Park District: Old Town-St Lawrence -Distillery



Local Places

Thinking creatively about local public spaces to expand and connect our parks and public realm system.



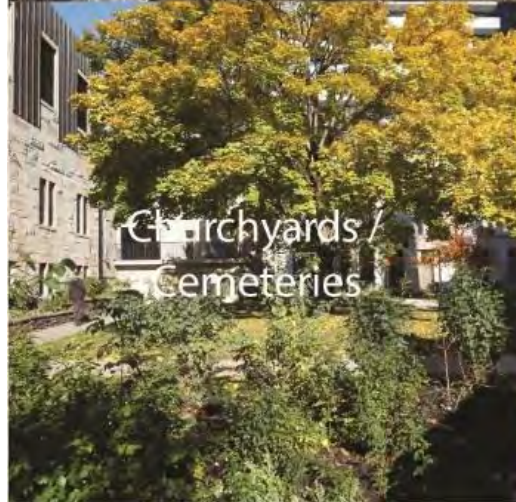
Laneways



Parkettes



Schoolyards



Churchyards /
Cemeteries



POPS



Overlooked Places



Parks & Public Realm in King-Parliament

PARKS & PUBLIC REALM in KING-PARLIAMENT

Building on the Downtown Parks and Public Realm Plan, the Review will:

- Update the parks and public realm structure in King-Parliament, based on the Great Streets and Park Districts in the Downtown Plan
- Address the need for more and better connections between parks and within the public realm
- Streamline the existing plans in the area to provide clear direction on public realm improvements



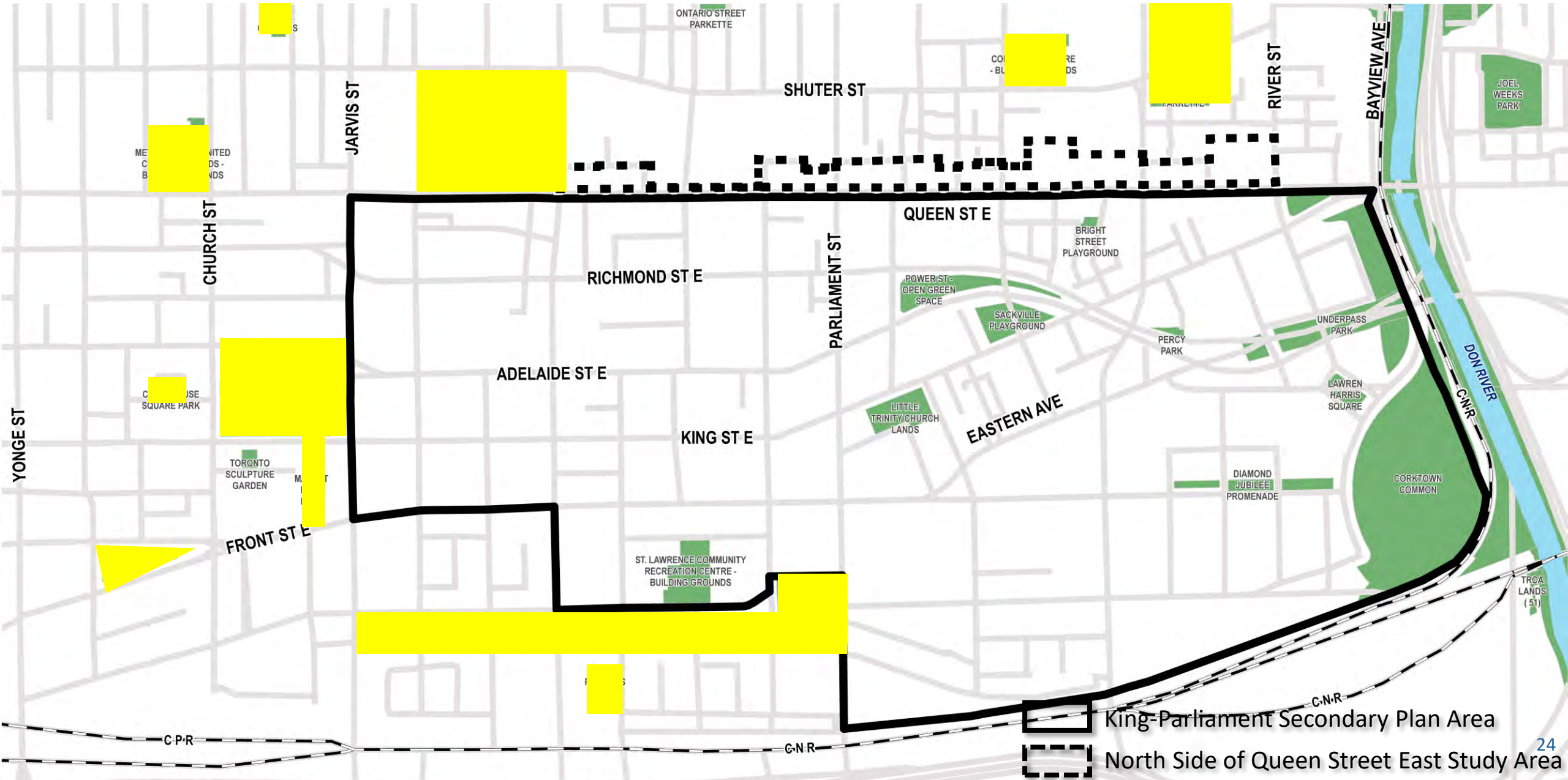
Existing Parks within study area

Total park area: 9.89 ha

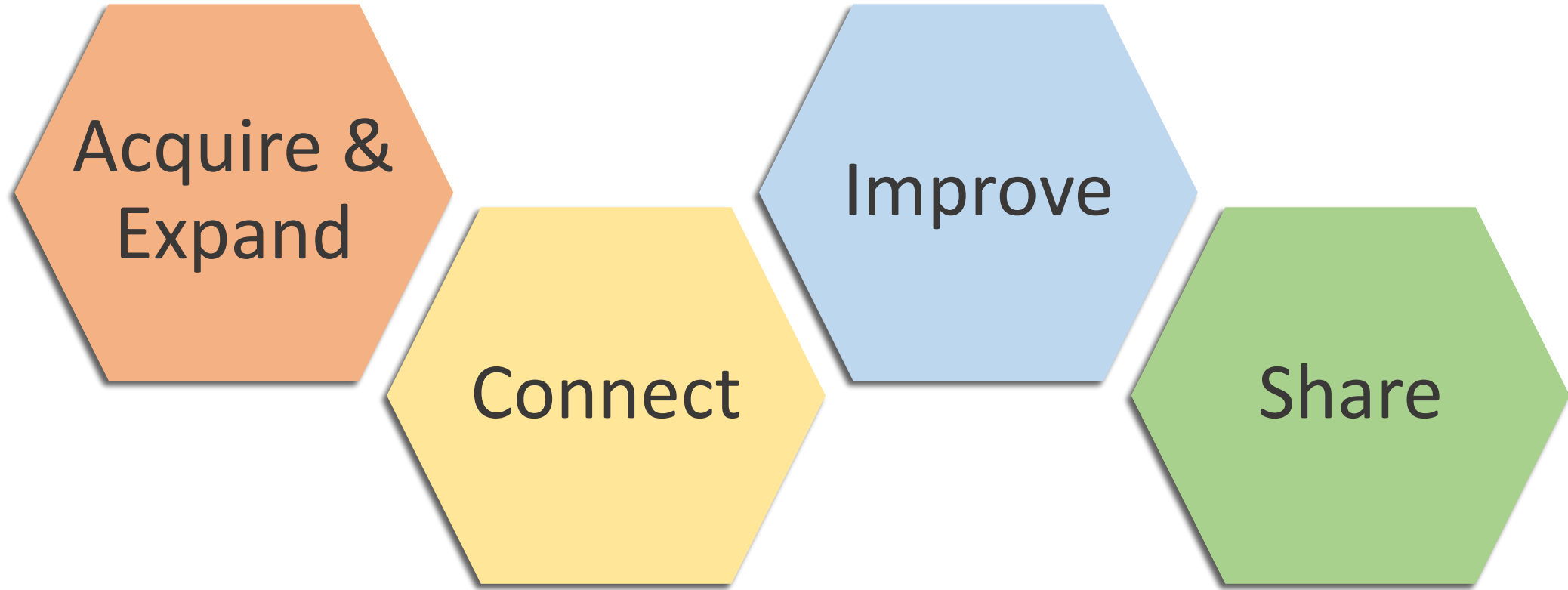
Majority of parks are under 0.5 ha

Park name	Size (ha)	Amenities
Bright Street Playground	0.03	Playground
Percy Park	0.04	Planted areas
Lawren Harris Square	0.15	Benches
Power St Open Green Space	0.17	Off-leash Area
Diamond Jubilee Promenade	0.4	Art/Sculpture Ornamental Fountain Splash Pad
Sackville Playground	0.4	Playground Splash Pad
Little Trinity Church Lands	0.4	Playground
Underpass Park	1.1	Playground Basketball Court Skateboard Area Picnic Site Planted areas
Corktown Common	7.2	Playground Multi-purpose Field Off-leash Area Splash Pad Trails and planted areas

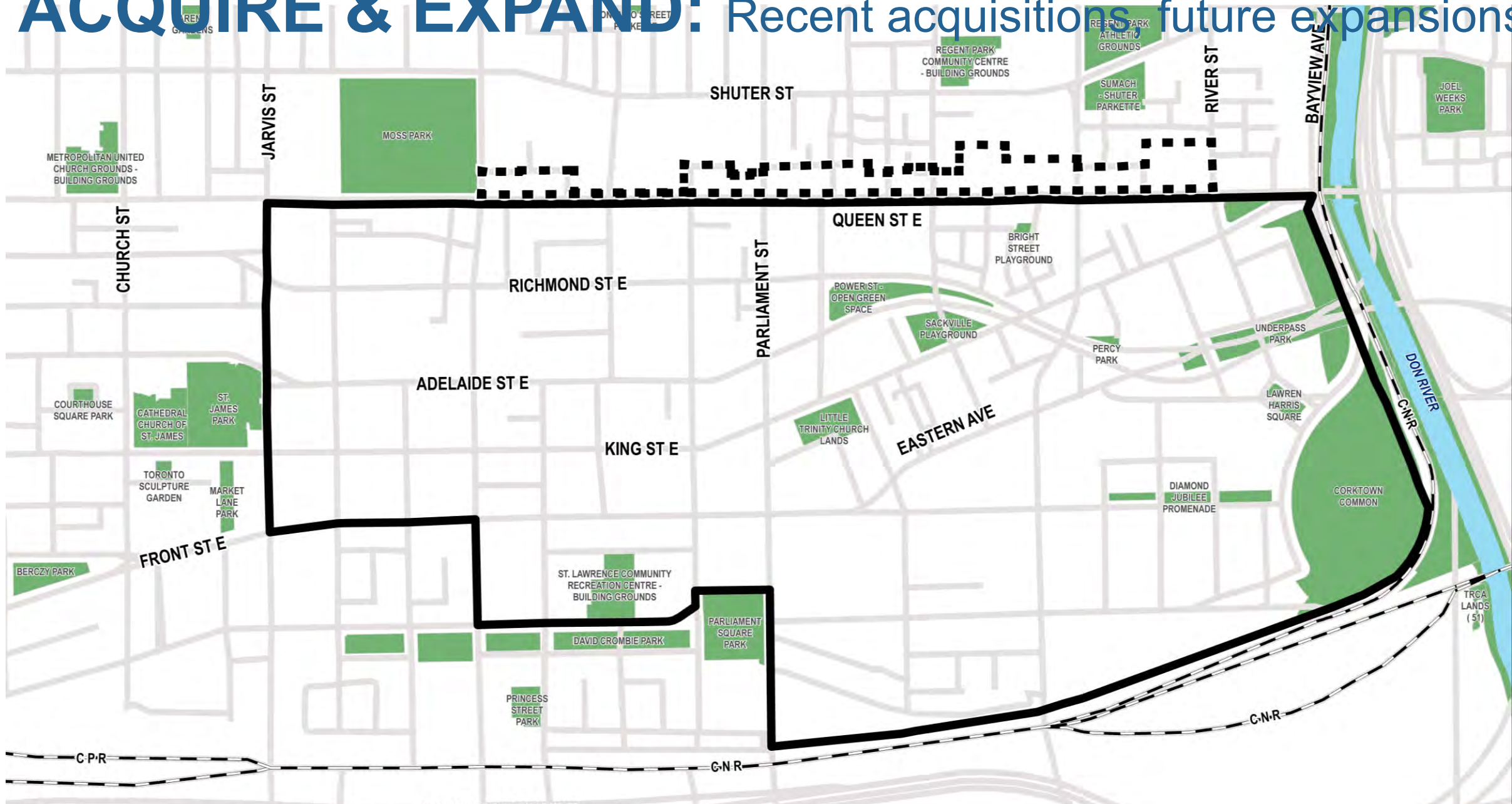
Surrounding Park System



Applying the 4 Principles



ACQUIRE & EXPAND: Recent acquisitions & future expansions



ACQUIRE & EXPAND: First Parliament Site



IMPROVE:

Corktown Parks Master Plan

Recent Improvements:

- Sackville Playground
- Bright St. Playground
- Power St. Dog off-leash area

Upcoming Improvements:

- Sumach-Shuter Parkette
- Little Trinity Church Lands



IMPROVE: St. James Park Phase 1

Church St.

St. James Park

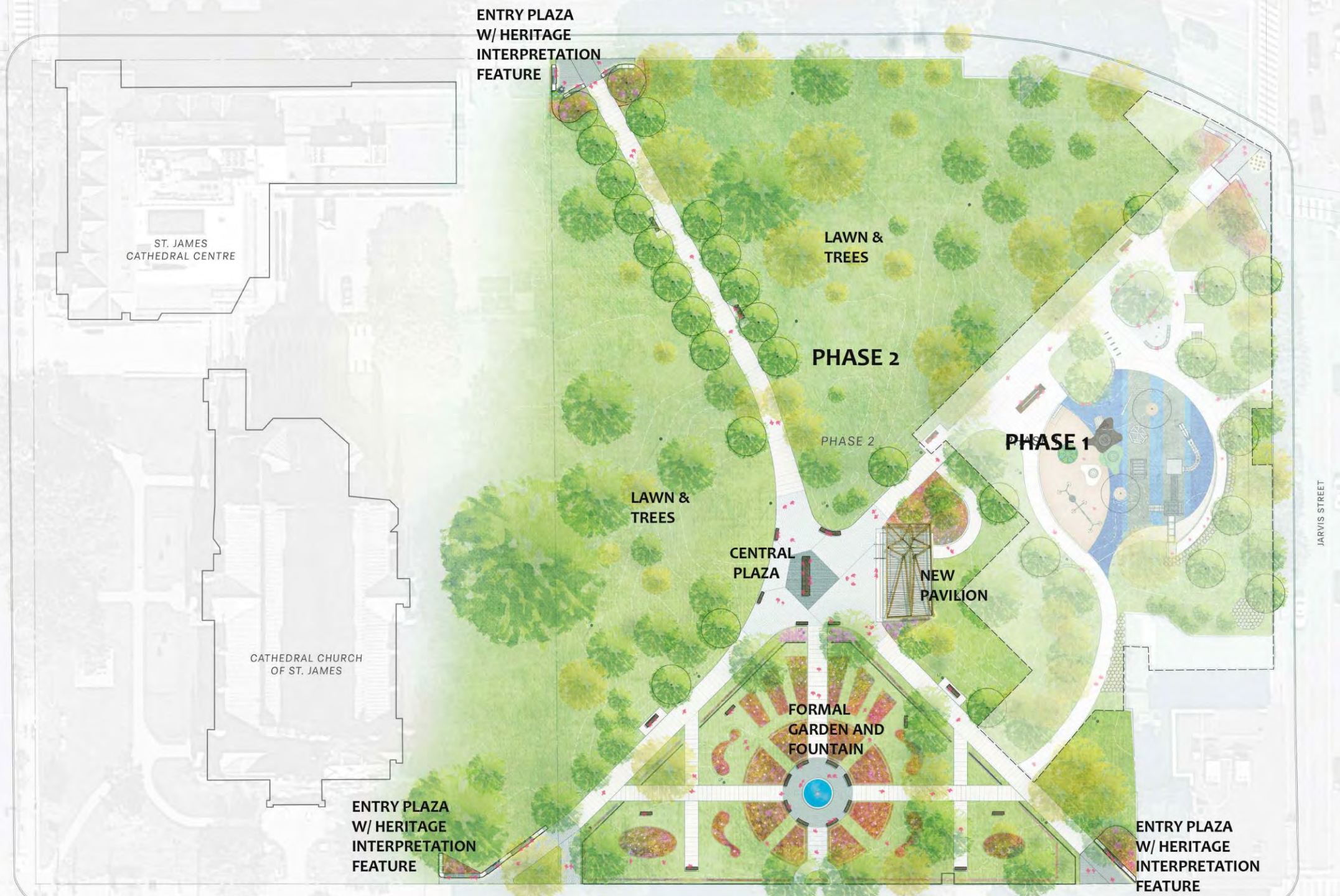
ENTRY PLAZA

PLAYGROUND

Jarvis St.

PHASE 1 LIMIT

PHASE 1 LIMIT



IMPROVE & CONNECT:

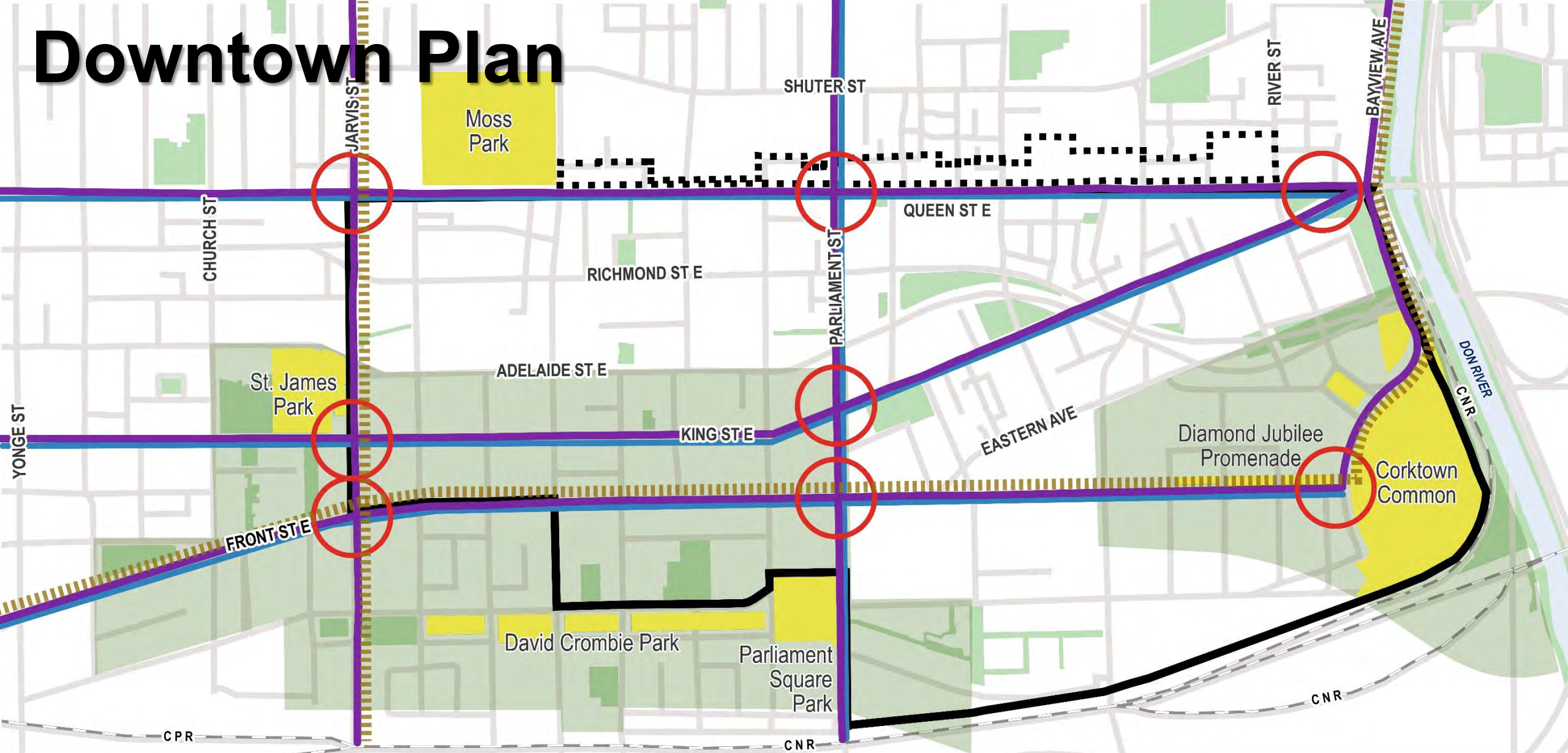
David Crombie Park Revitalization










Emerging Urban Structure

Downtown Plan



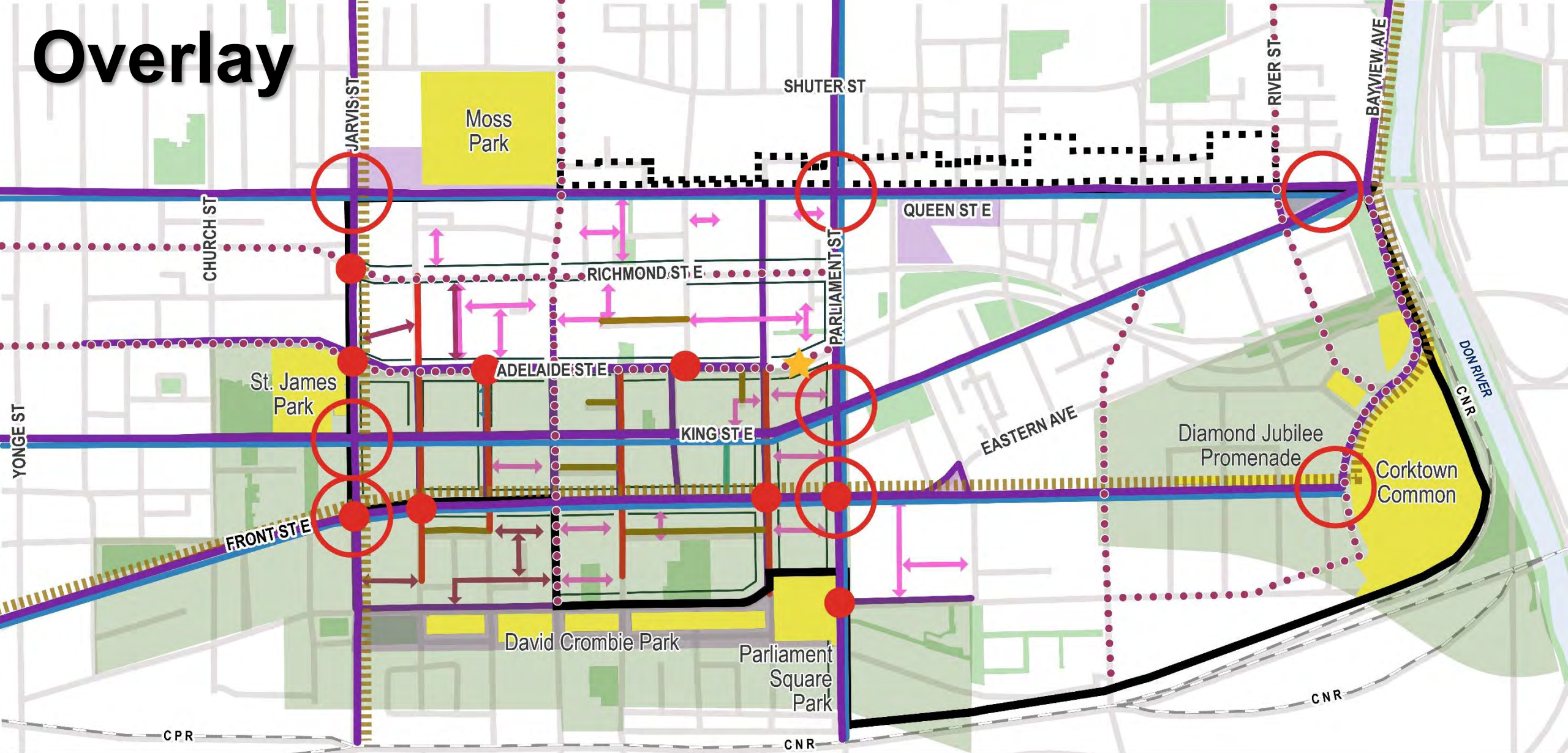
-  King-Parliament Secondary Plan Review Study Area
-  North Side of Queen Street East Study Area

-  Great Streets
-  Great Street Intersections
-  Priority Retail Streets
-  Cultural Corridors

-  Parks/Open Space (Including Under Review)
-  Sun Protected Parks
-  Park Districts



Overlay

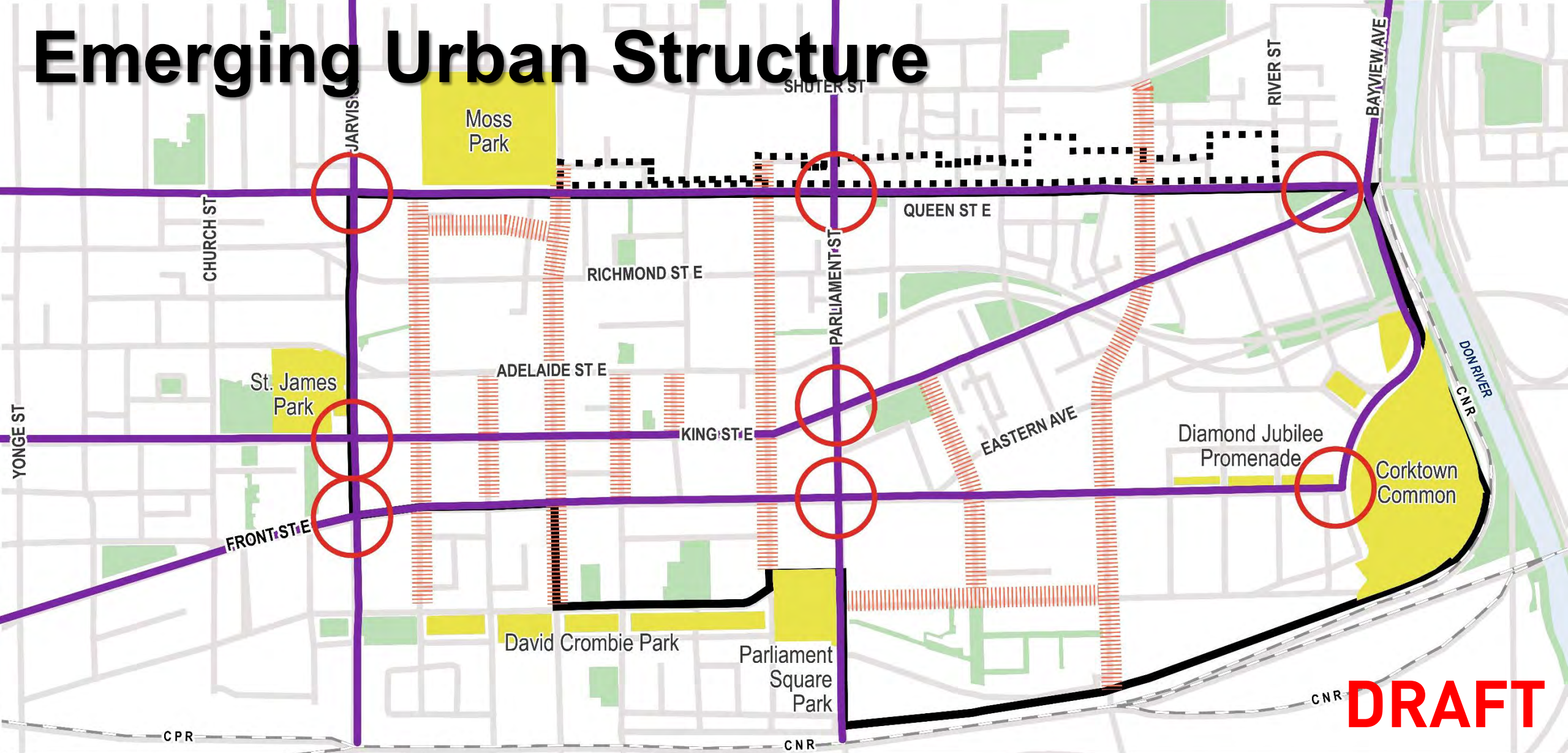


- King-Parliament Secondary Plan Review Study Area
- North Side of Queen Street East Study Area


Parks/Open Space (Including Under Review)

Not to Scale

Emerging Urban Structure





 King-Parliament Secondary Plan Review Study Area

 North Side of Queen Street East Study Area

 Great Streets

 Great Street Intersections

 Parks/Open Space (Including Under Review)

 Sun Protected Parks

 Areas for Public Realm Improvement

