

July 9, 2019.

Rosehill Reservoir Rehabilitation Phase 2B: Full Park Closure

Contract #: 17ECS-MI-03WA

Start Date: August 6, 2019.

End Date: Spring, 2021.

**Timeline is weather dependent and subject to change.*

The City's contractor will begin Phase 2B on August 6, 2019, to begin working on the East Cell Basin. This work will result in a full park closure and will also restrict access from the park into the ravine. See map below. Work will continue on Saturdays from 9 a.m. to 5 p.m. until Spring, 2021, to advance the construction schedule.

WORK DETAILS

Work on Phase 2B on the East Basin will begin August 6, 2019 and will follow similar activities to Phase 1:

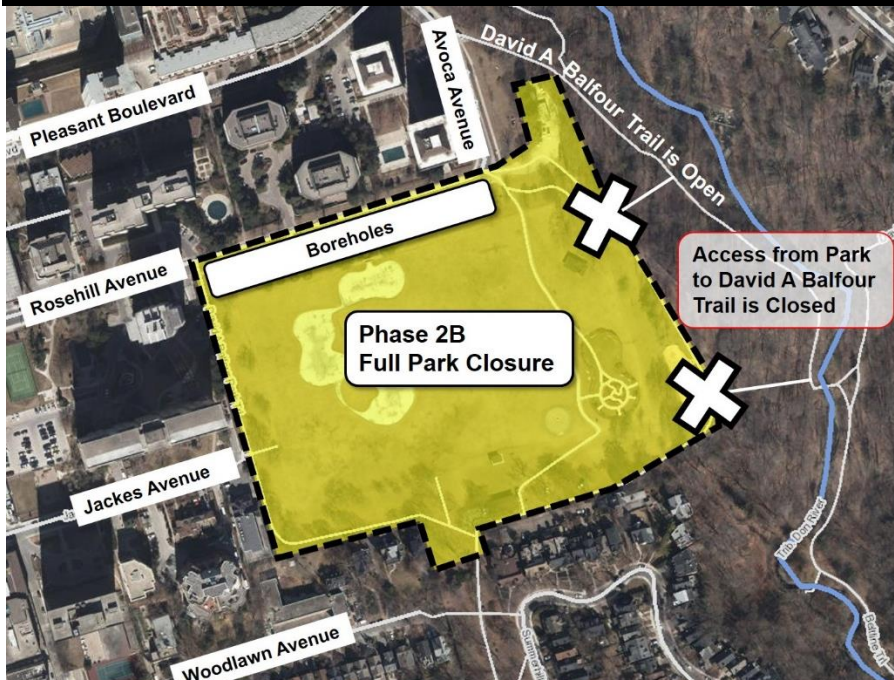
- Realign hoarding and remove park fixtures (including Garden). Note: To manage ravine stability and reduce tree impacts, the fence posts will be set in concrete anchor blocks.
- Install Tree Protection Zones. Note: No tree removals are currently scheduled as part of 85% Park Design. Tree impacts will be determined for 100% Park Design and will be included in future Updates.
- Remove soil and replace waterproofing membrane
- Rehabilitate the structural, mechanical and electrical systems

Work on Phase 1 on the West Basin will continue and involve the following activities:

- Commission and put West Basin back in service
- Install new soil layers above the waterproofing membrane. Note: Once the Park design is finalized, the sod around the Upper Perimeter Pathway will be removed to install the pathway.
- Boreholes along Rosehill will be carried out to ensure underground infrastructure is coordinated with park design

Phase	Closed Park Areas	Open Park Areas	Park Access Impacts
Phase 2B August 6 to December 31, 2019	<ul style="list-style-type: none"> • Entire Park, except Little Park/ Summerhill Entrance 	<ul style="list-style-type: none"> • Most of Little Park • Avoca Plant Beds 	<ul style="list-style-type: none"> • No access from Park to Ravine Trails (see map) • Playground and Garden are closed • Signs will be installed on trail
Phase 3 January, 2020 to Spring, 2021	Full Park Closure: Park Impacts will be determined late 2019. Once park elements are installed, sections of the park may open prior to Spring 2021.		

PHASE 2B WORK AREA



Legend





Shaded Area: Hoarding for Phase 2B Full Park Closure (includes Boreholes on Rosehill)

David A Balfour Trail: is open
 Access via Avoca Avenue only
 No access from Park to David A Balfour Trail

www.toronto.ca/rosehill

WHAT TO EXPECT DURING CONSTRUCTION

You may experience dust, noise and other inconveniences. The City will make efforts to reduce the impacts. We appreciate your patience.

	<p>Work Hours:</p> <p>These hours are within the City's Noise By-law. Notification will be provided if extended hours are required.</p> <ul style="list-style-type: none"> Monday to Friday: 7 a.m. to 7 p.m. Saturday: 9 a.m. to 5 p.m. <p>Noise: Please contact 311 with noise complaints, ie. if work starts outside of the Noise Bylaw indicated above.</p> <p>Note: There are other construction activities in the neighbourhood. Please provide as much detail as possible in your complaint including:</p> <ul style="list-style-type: none"> Date Time of day Vehicle license plate number Company name on vehicle Exact location or address
 	<p>Soil Removal:</p> <p>The existing soil on top of the reservoir will be removed and replaced. Trucks will access the site at the Main Access Point at Rosehill and Avoca Avenues.</p> <ul style="list-style-type: none"> The reuse of topsoil from East Basin onto the West Basin is being investigated to reduce about 250 trucks from the roads. Beeping from reversing construction vehicles is mandated by the Ministry of Labour. Trucks that reverse to remove soil, do so to comply with disposal categories (Phase 2B), or to keep new layers of topsoil undisturbed (Phase 1).
	<p>Idling:</p> <p>If you see trucks idling on the street for more than one (1) minute, please contact 311 and include the license plate number, location of the truck, how long the truck idled, any company name on the vehicle and the time of day. Email 311@toronto.ca or dial 311 within the City of Toronto.</p>

NEED MORE INFORMATION?

If you have questions about the upcoming work, please contact us:

Public Consultation	Kate Kusiak, 416-392-1932, rosehill@toronto.ca
TTY Hearing Impaired Service	416-338-0889 (7 days a week, 8 a.m. to 5 p.m., closed holidays)
General inquiries	311
Website	www.toronto.ca/rosehill - email us to register for updates

Thank you for your patience. Building a great city takes time. Better infrastructure for all of us is worth the wait.