



WEST TORONTO RAILPATH EXTENSION



Key Stakeholder Meeting No. 2

June 25, 2019



MontgomerySisam



WELCOME

Meeting Purpose:

- Provide project update
- Receive your feedback on design development leading into next round of consultation:
 - Design Review Panel (September 2019)
 - Public Event No.2 (Nov/Dec 2019)



Agenda

Introductions

Updates:

- =====\\DeRAIL Integrated Art Plan + Recent Activation
- Design Review Panel Comments
- Metrolinx Corridor Expansion
- SmartTrack and GO Station Design

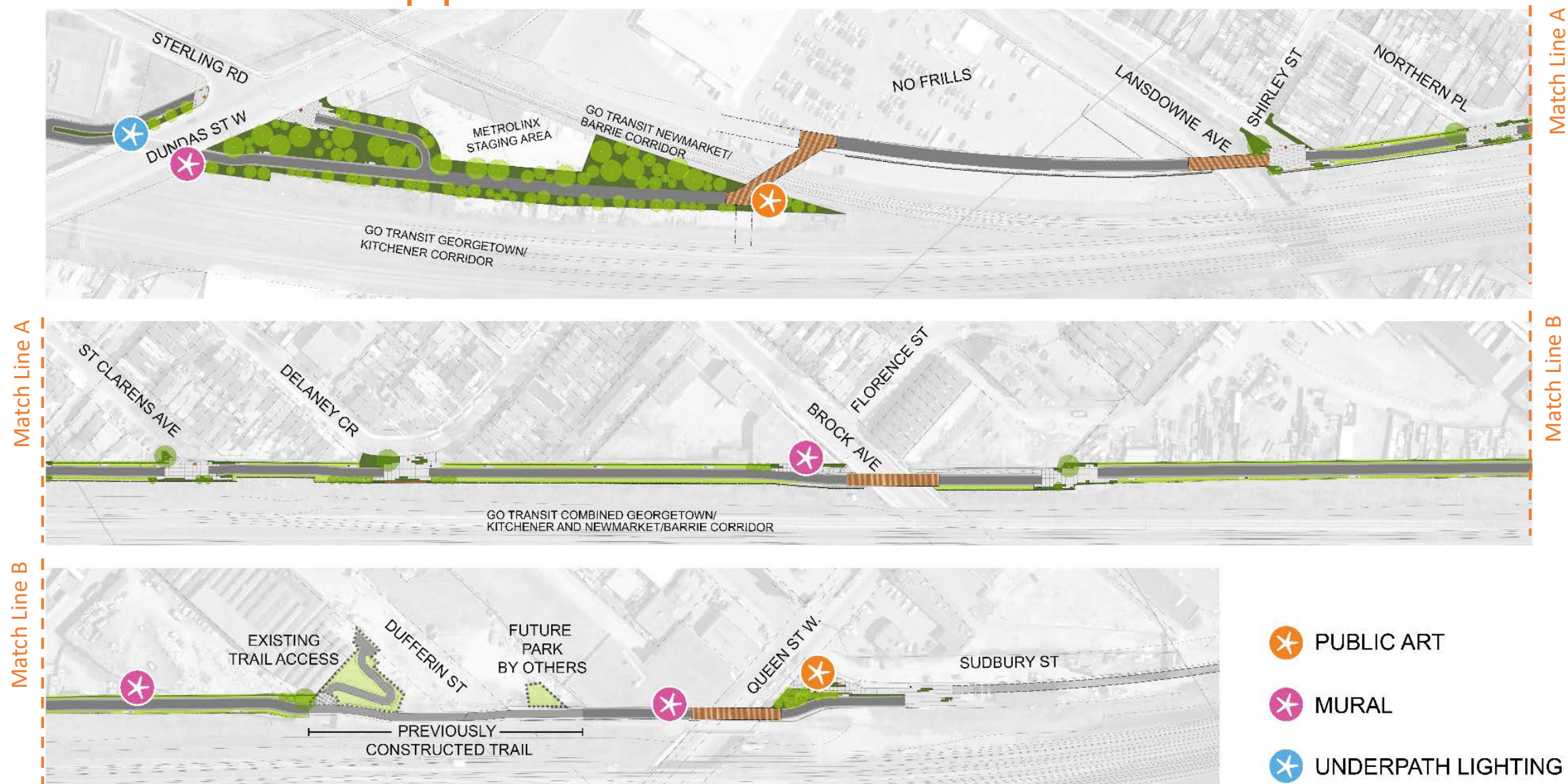
Overview 60% Detailed Design:

- Site plan review with overall Landscape Architecture, Elements and Planting Typologies
- North and South tie-ins
- Bridge Structures
- No Frills Connection
- Community Connections Feedback
- Property Impact Meetings

What's Next?

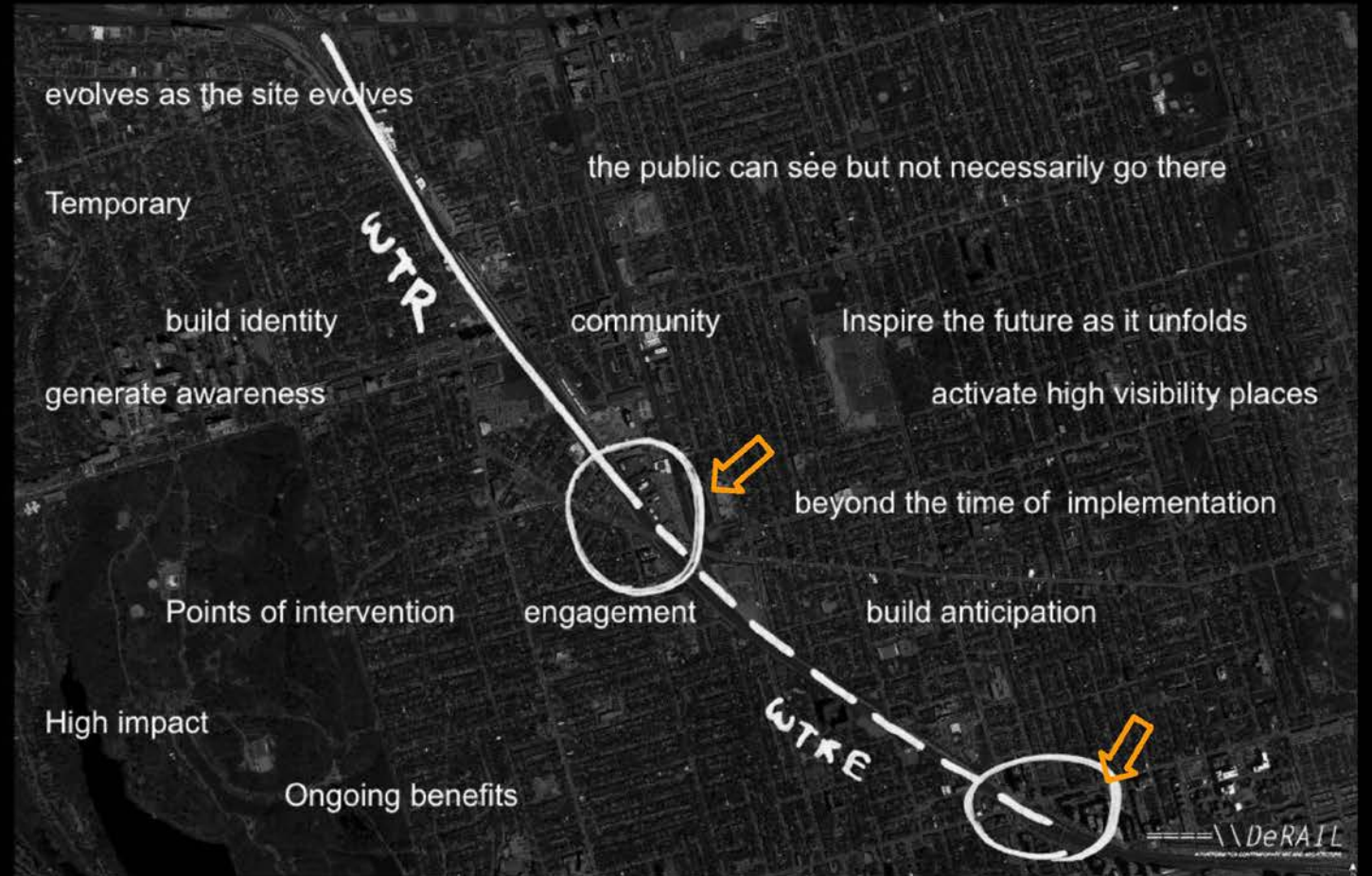
Discussion

Public Art Opportunities



AN INTEGRATED UNIQUE PLACE- SPECIFIC PUBLIC ART PLAN FOR WTR(E)

USE ART AS THE ACTIVATOR
CONNECT COMMUNITIES TO A NEW PLACE
LEVERAGE PUBLIC INVESTMENT
BEYOND FUNCTIONALITY TOWARD EXPERIENCE
REFLECT DIVERSE IDENTITIES
CELEBRATE NEW WAYS OF MOVING THROUGH A CITY



TWO STRATEGIC SITES TO ACTIVATE NOW



MAKING FOR PLACEMAKING

PRESENTED BY GRADUATE STUDENTS FROM THE JOHN H. DANIELS SCHOOL OF ARCHITECTURE, LANDSCAPE + DESIGN, UNIVERSITY OF TORONTO
WEDNESDAY APRIL 3RD - SUNDAY APRIL 7TH

FIVE SITE-SPECIFIC ACTIVATIONS EXPLORE MATERIALITY, PROCESS AND FORM TO BRING NEW ENERGY TO THE UNUSED SPACE WHERE THE WEST TORONTO RAILPATH (WTR) WILL CONNECT TO THE PROPOSED RAILPATH EXTENSION. COLLECTIVELY, THE WORKS DRAW ATTENTION TO THE ECOLOGIES AND INDUSTRIAL CHARACTER OF THIS DYNAMIC LINEAR LANDSCAPE AND INVITE THE PUBLIC TO CONSIDER NEW WAYS TO UNDERSTAND AND EXPERIENCE THIS PLACE.

LOCATION: NORTH OF DUNDAS WEST BRIDGE AT WTR STERLING ROAD ENTRANCE



SITE ACTIVATIONS

AMPLIFIED

Hillary DeWitt, Likun Liu, Bonnie Tung

The WTR has always offered opportunities to encounter strangers, yet while we may occupy a common space our experiences often remain solitary. The need for shared physical experiences on the railpath is paramount and Amplified offers a means to take part in these experiences. We encourage people to engage with the piece and experience the heightened sounds of the railpath and of one another.

LOOPY

Diana Franco Camacho, Hakima Hoseni, Isaac Neufeld

This continuous series of loops speak about the past, present, and the future of the WTR. The use of ribbon connects the user to the site's industrial past while the form acts as a bike infrastructure, planting structure and a gateway signifying a portal to the future.

SPRING RHYTHM

Cornel Campbell, Sarvin Khajavi, Neda Nassiri Toosi

Spring Rhythm is an interpretation of seasonal change. There is a rhythm in the way WINTER dissolves into SPRING, and SNOW into the BLOOMS monochrome into colour. A rhythm interpreted as the quiet winter leaves to the season of growth and change.

GRADIENT AND INTERWEAVE

Huayra (Krystina) Li, Shaye (Chantal) Zhang

The idea comes from how water and plants are "told" in different seasons and how the public participate in public art. By controlling different variables, including the width of stands, the density of threads, the size and the spatial relationship among keys becomes a metaphor for the gradual change of melting ice and diverse layers of vegetation. Visitors are welcome to attach their keys to the installation.

INFLORESCENCE

Reesha Morar, Neil Phillips

The inspiration behind Inflorescence is two-fold. Inspired by both native grasses rooted adjacent to the site, and by the site's dark night time conditions, Inflorescence strives to capture and emulate the movement and profile of the grasses while also creating a subtle illumination that draws attention to the underplanted site.



Thank you to our partners

CASTLEPOINT

Greybrook Realty Partners

Toronto

WEST TORONTO RAILPATH

METROLINX

DeRAIL

====\\DeRAIL
A PLATFORM FOR CONTEMPORARY ART AND ARCHITECTURE

Design Review Panel

Key Comments

A Growing Community

- *The design of the Railpath should anticipate the **emerging high-density** context and serve as a green space pathway that provides amenities and places of respite for the rapidly changing neighbourhoods it connects.*

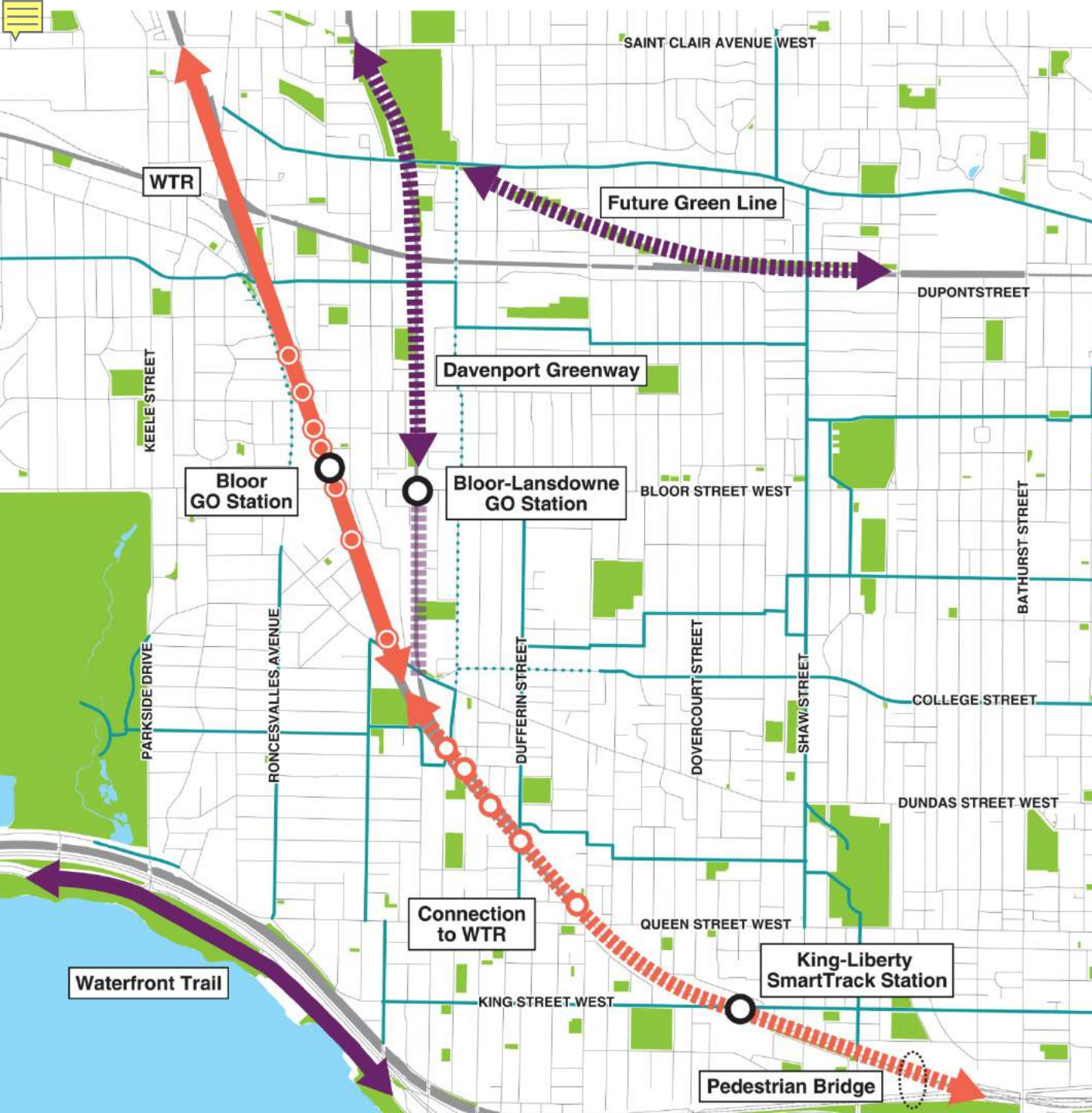
Community Space

- *Adjacent communities can utilize the Connection Points for community events like **Spring Planting Sales, West Toronto Railpath Runs**, and others, beyond facilitating primarily pedestrian and bike movement.*



Area Projects

- Metrolinx Corridor Expansion and Re-alignment Project
- SmartTrack + GO Station Design



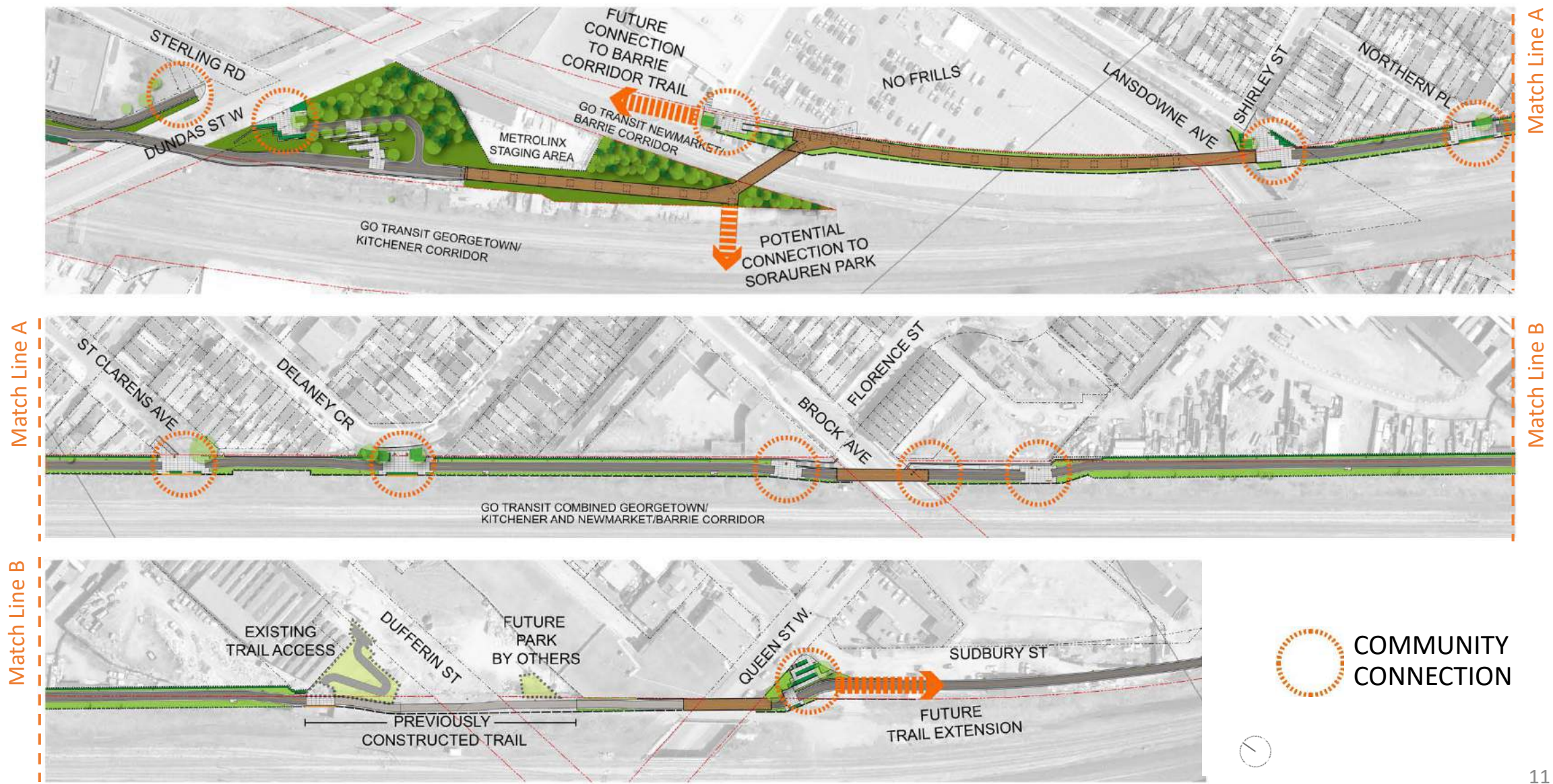


Proposed West Toronto Railpath Extension: planting, lighting, seating, wayfinding and multi-use pathway

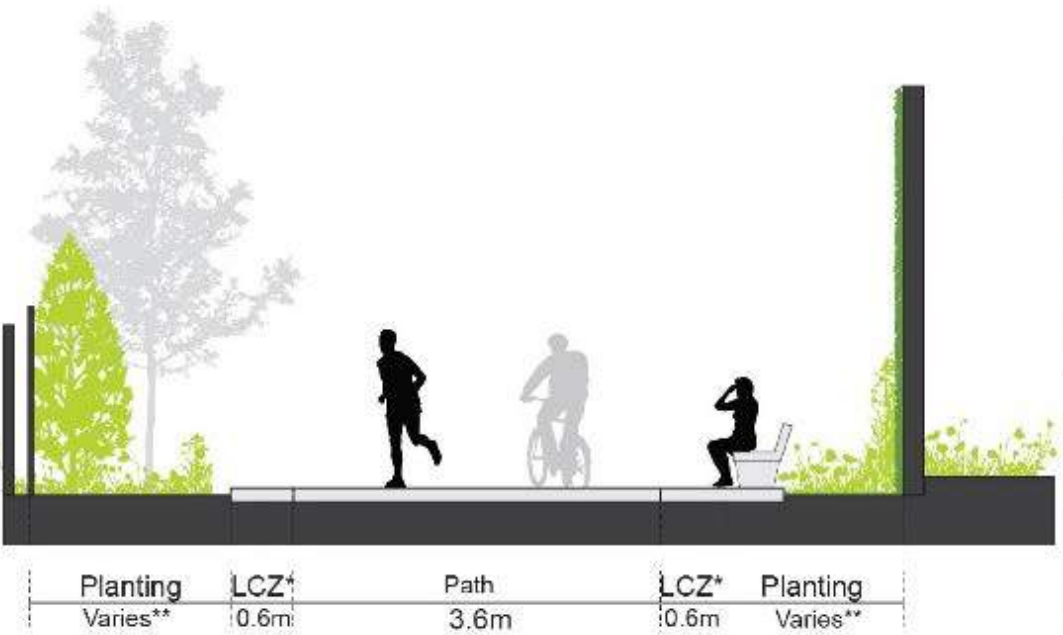
Master Plan



Railpath Extension Site Plan 60% Detailed Design



Multi-Use Path – Typical Section



Material Palette



Asphalt



Stabilized Aggregate



Lighting



Native Planting



Vines on Noise Wall



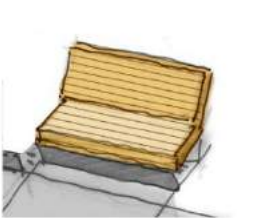
Vines on Fence



Cedar Hedge



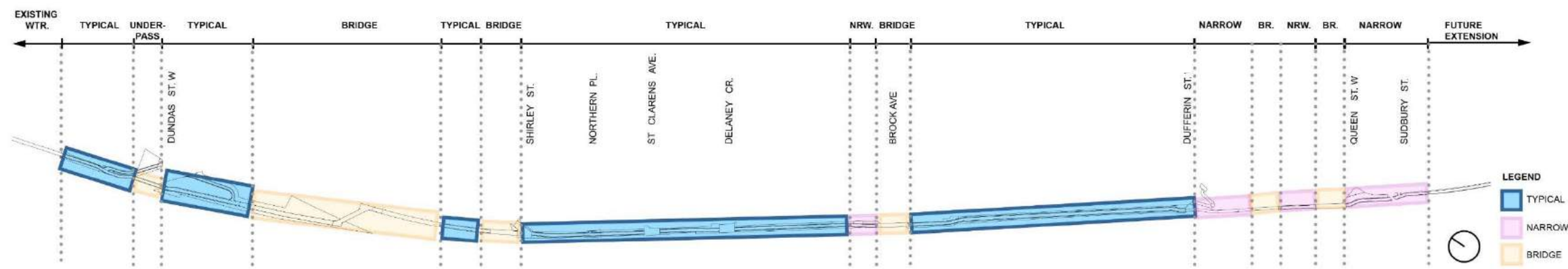
Tree Planting



Bench



Mural (Proposed)



Planting Typologies



Planting Typologies for Community Connections



Black Oak
Quercus velutina



Pasture Rose
Rosa Carolina



Little Blue Stem
Schizachyrium scoparium



Potato Bean Vine
Apios americana



Butterfly Weed
Asclepias tuberosa



Common Milkweed
Asclepias syriaca



Purple Coneflower
Echinacea purpurea

Planting Typologies: Oak Savannah



Black Oak
Quercus velutina



Sassafras
Sassafras albidum



New Jersey Tea
Ceanothus americanus



Indian Grass
Sorghastrum nutans



Big Blue Stem
Andropogon gerardii



Sedge
Carex pennsylvanica



Gloriosa Daisy
Rudbeckia hirta



Tick-trefoil
Desmodium canadense

Planting Typologies: Mixed Woodland



Sugar Maple
Acer saccharum



Big Tooth Aspen
Populus grandidentata



Tulip Tree
Liriodendron tulipifera



American Hornbeam
Carpinus caroliniana



Witch Hazel
Hamamelis virginiana



Northern Bush Honeysuckle
Diervilla lonicera

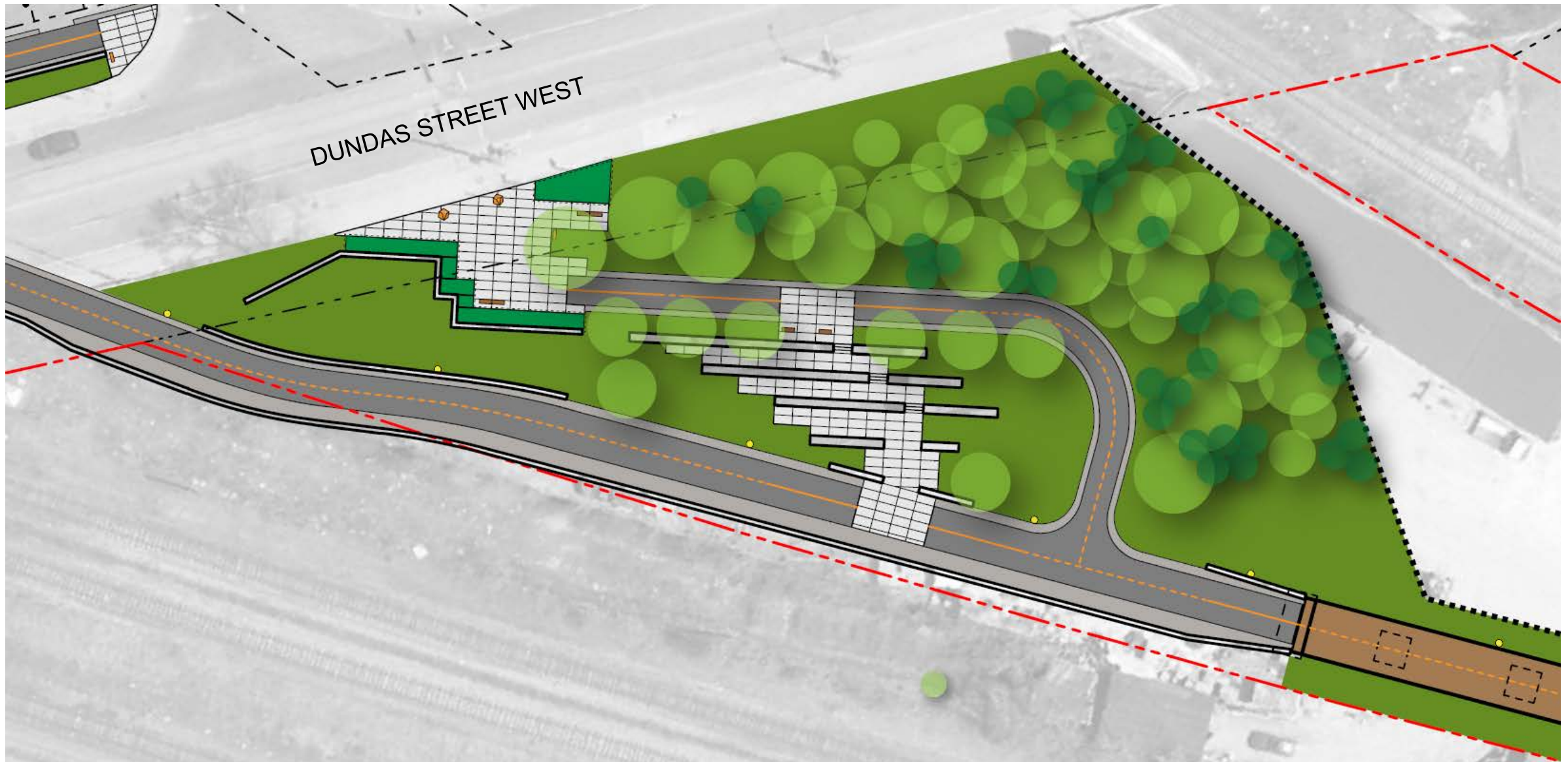


Virginia Creeper
Parthenocissus quinquefolia



White Wood Aster
Eurybia divaricata

Dundas Street West Connection Design





Queen Street West Connection Design







QUEEN

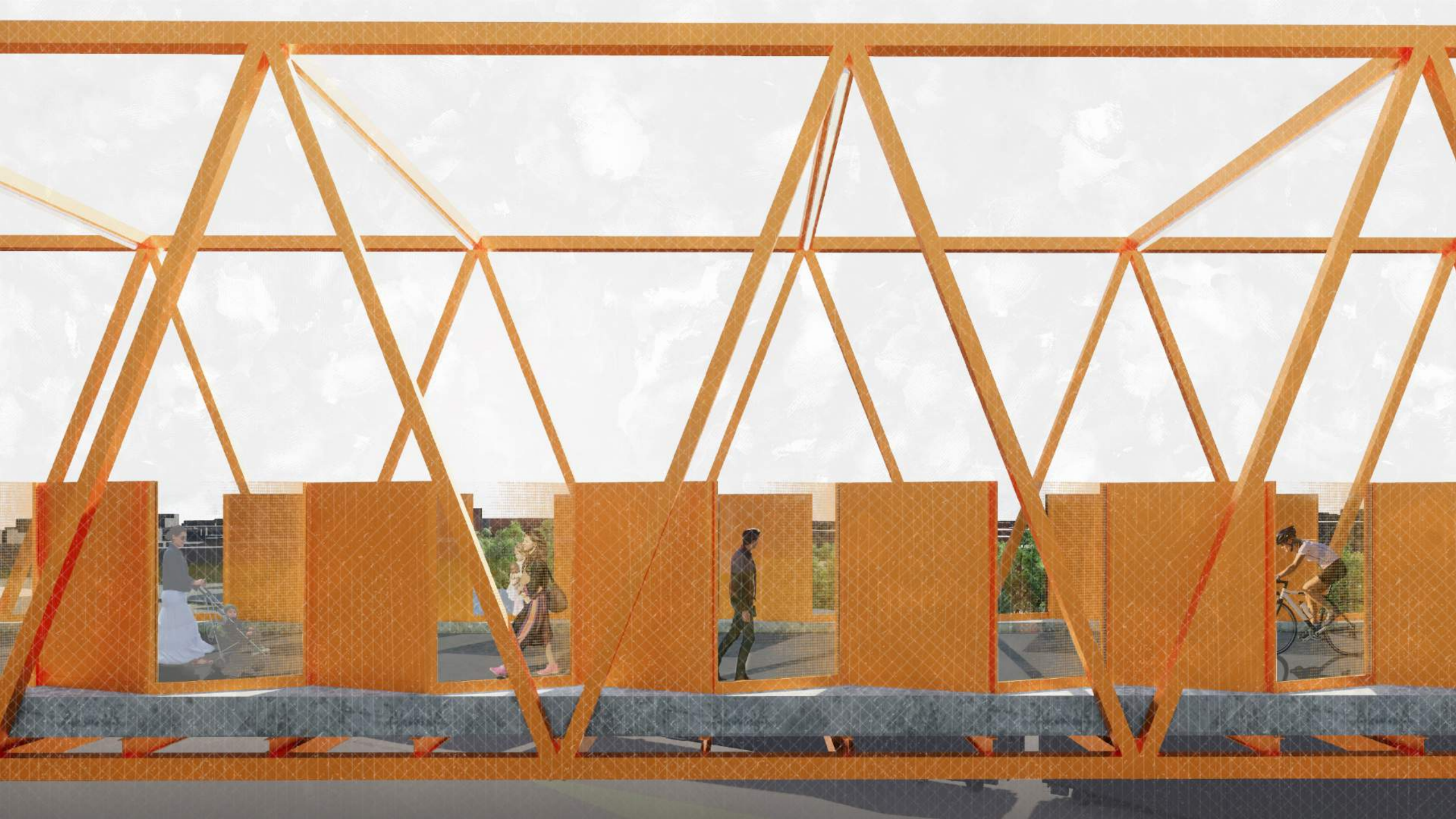
W
T
R
WALK TOWARDS RAIL PATH



9-20-2019 10:44:15 AM C:\Users\jerry\Documents\10031_WING_E0019_C_A14_infile\wingfigs\jerry.dcr.m

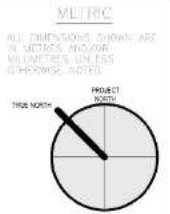
| | | | | | | | |
|-----------------------|-------|-------|----------|-----------------------|------|--|--|
| REFERENCE DRAWINGS | | ISSUE | | REVISIONS | | DRAWN BY: Aaker DESIGNED BY: |   WEST TORONTO RAIL PATH EXTENSION BETWEEN DUNDAS STREET W AND ABBELL STREET SITE PLAN |
| | | | | | | CHECKED BY: Cheche APPROVED BY: | |
| | | | | | | SCALE: As indicated ONLY | |
| | | | | | | ONLY | |
| | | 2 | 10/02/15 | EVALUATION FOR REVIEW | | | |
| | | 1 | 10/02/15 | EVALUATION FOR | | | |
| DWG NO. | TITLE | NO. | DATE | ISSUED | REV. | DATE | |



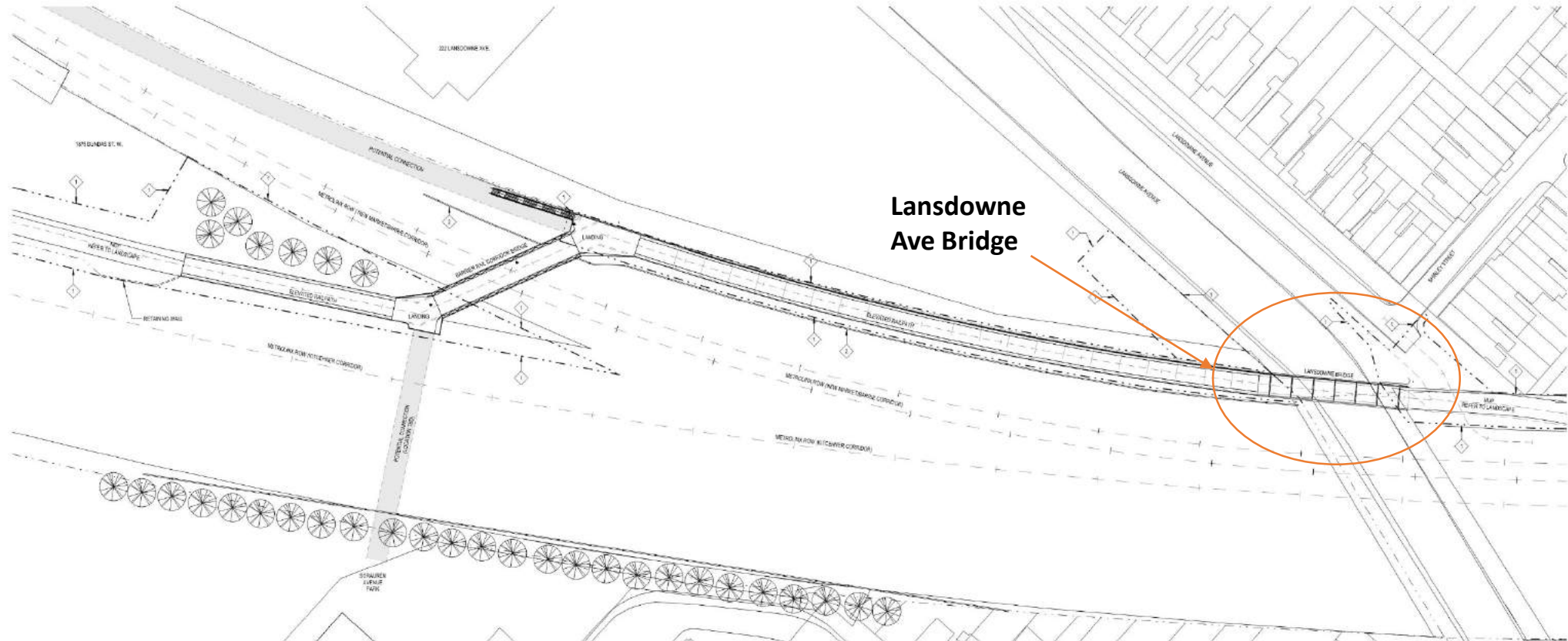




Bridge Structures – Lansdowne Ave Bridge



| NOTES |
|-----------------------------|
| PROPERTY LINE |
| HOSE BARRIER (NOT IN SCOPE) |



1 Context Plan
A101
1:500

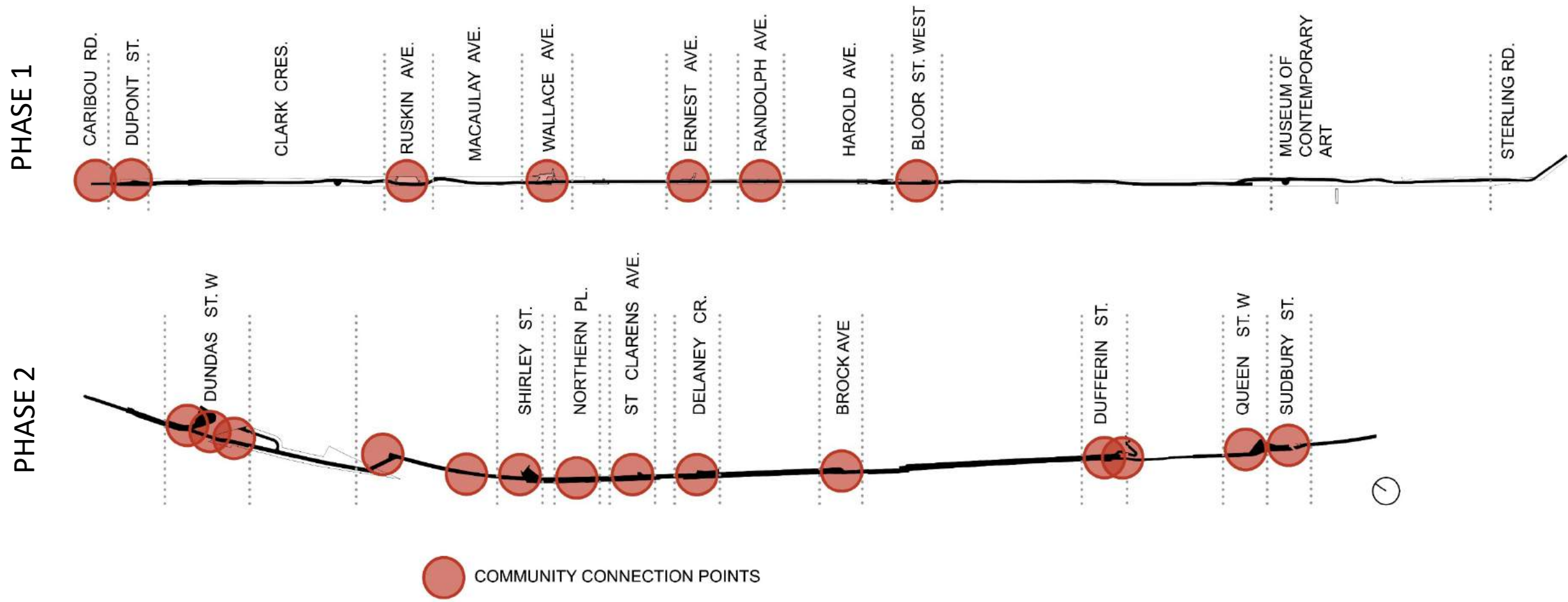
| REFERENCE DRAWINGS | | ISSUE | | REVISIONS | | DRAWN | | DESIGNED | | APPROVED | | MontgomerySisam | | 4 TRANSIT | | METROLINX | | METROLINX PROJECT NO. | | WEST TORONTO RAIL PATH EXTENSION BETWEEN DUNDAS STREET W AND ABEIL STREET SITE PLAN | |
|--------------------|-------|-------|----------|-------------|-----------|-----------|-----------|-------------|-----------|-----------|-----------|-----------------|-----------|-----------|-----------|-------------|-----------|-----------------------|------|---|--------------|
| NO. | TITLE | NO. | DATE | ISSUED | REV. DATE | BY: Acker | BY: Acker | BY: Acker | BY: Acker | BY: Acker | BY: Acker | BY: Acker | BY: Acker | BY: Acker | BY: Acker | BY: Acker | BY: Acker | NO. | NO. | CONTRACT NO. | CONTRACT NO. |
| 1 | | 1 | 18/08/10 | EXAM FOR OR | | 1 | 18/08/10 | EXAM FOR OR | | 1 | 18/08/10 | EXAM FOR OR | | 1 | 18/08/10 | EXAM FOR OR | | 2016-CST-024 | A101 | REV. SHEET | 1 |
| 2 | | 2 | 18/08/10 | EXAM FOR OR | | 2 | 18/08/10 | EXAM FOR OR | | 2 | 18/08/10 | EXAM FOR OR | | 2 | 18/08/10 | EXAM FOR OR | | | | | |



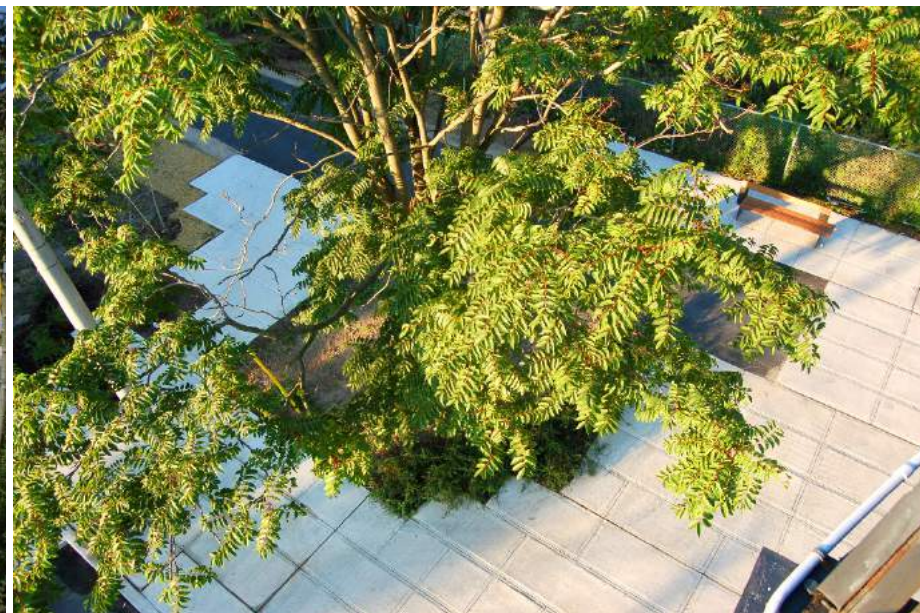
Lansdowne Ave Bridge
(Queen St and Brock Ave Bridges are similar)



Community Connection Points – Phase 1 & Phase 2

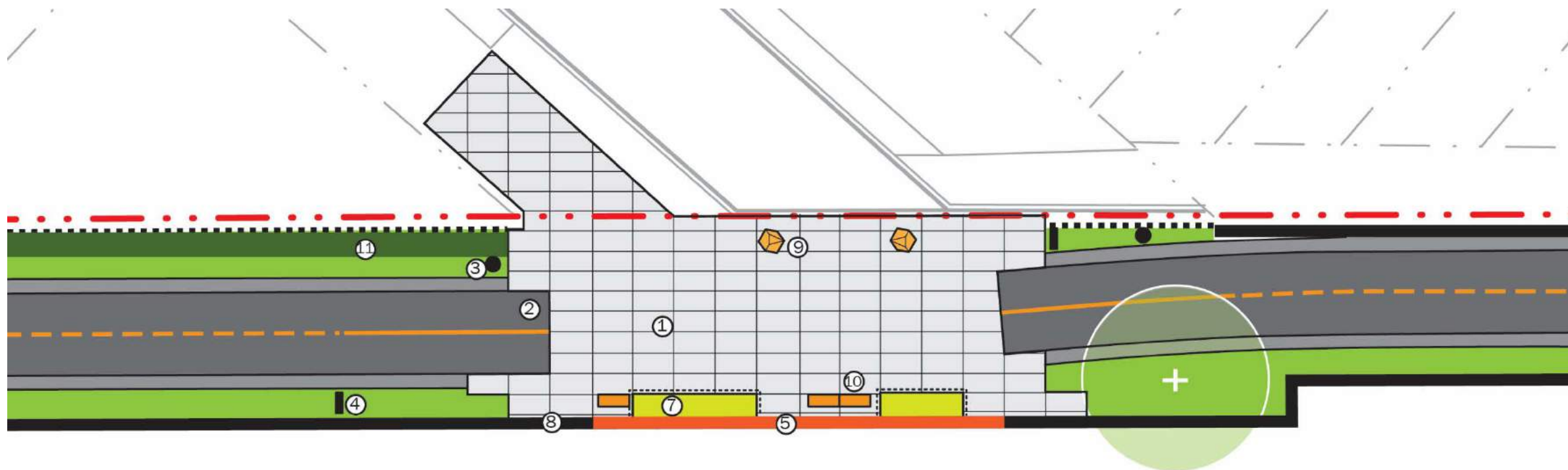


Community Connection Points – Phase 1





St. Clarens Avenue Community Connection Design



① Concrete



② Asphalt



③ Lighting



④ Steel Street Sign



⑤ Street Terminus Sign



⑥ Tree Planting



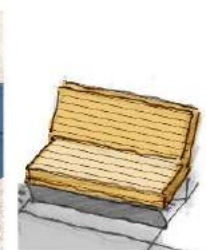
⑦ Native Planting



⑧ Vines on Noise Wall



⑨ Steel Bollard



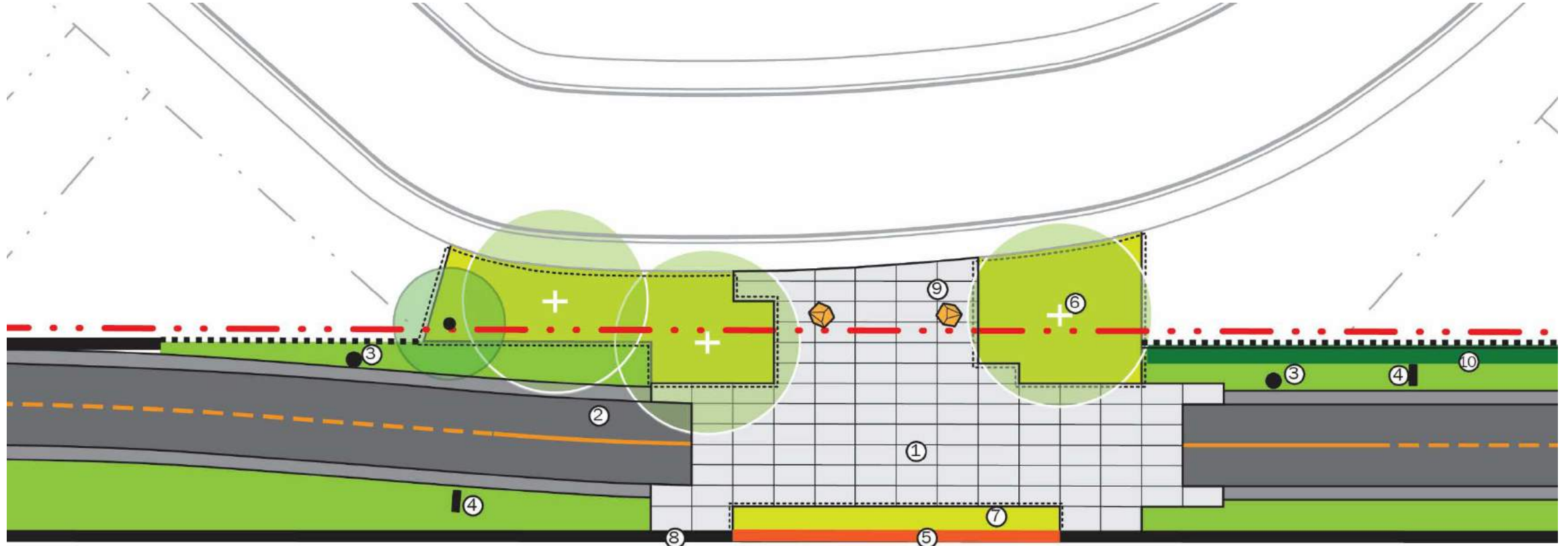
⑩ Bench



⑪ Cedar Hedge



Delaney Crescent Community Connection Design



① Concrete



② Asphalt



③ Lighting



④ Steel Street Sign



⑤ Street Terminus Sign



⑥ Tree Planting



⑦ Native Planting



⑧ Vines on Noise Wall



⑨ Steel Bollard



⑩ Cedar Hedge



NATIVE
PLANT SALE!

SHIRLEY

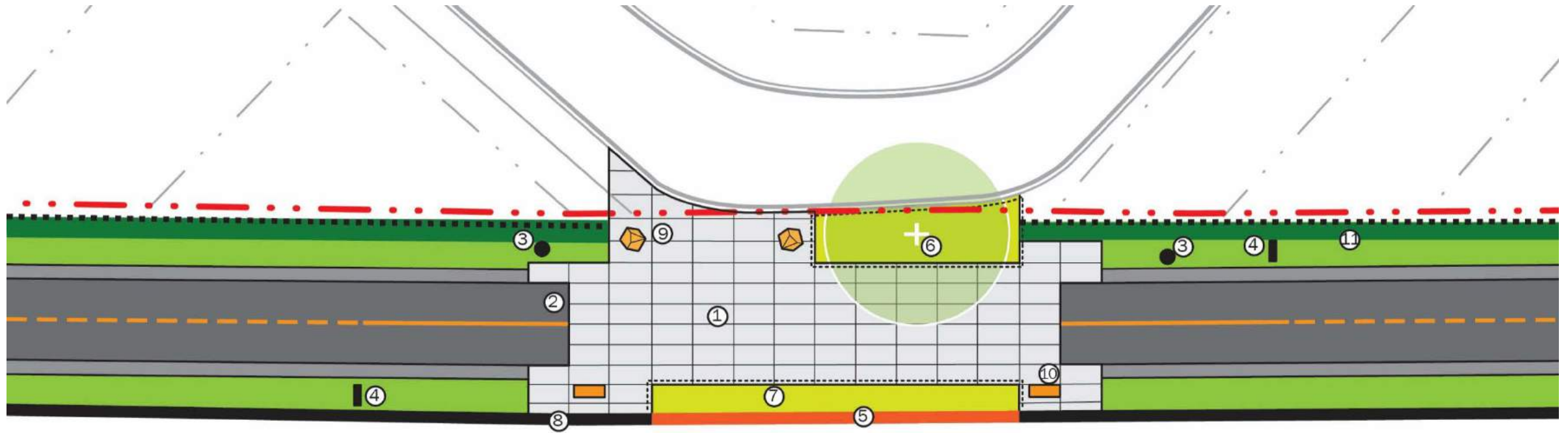
Community
Planting Day

Shirley Street Community Connection Design



Northern Place Community Connection Design

TO BE REVISED



① Concrete



② Asphalt



③ Lighting



④ Steel Street Sign



⑤ Street Terminus Sign



⑥ Tree Planting



⑦ Native Planting



⑧ Vines on Noise Wall



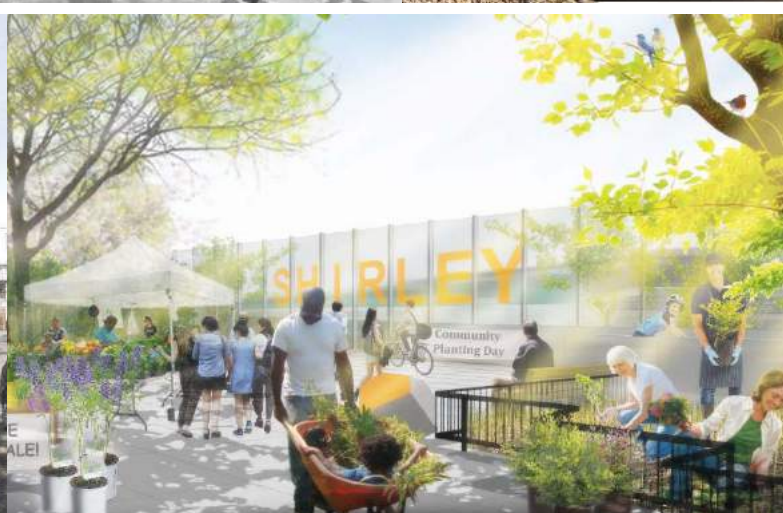
⑨ Steel Bollard



⑩ Bench



⑪ Cedar Hedge



Next Steps and Schedule

- Presentation to City's Design Review Panel – Sept 2019
- Public Event No.2 – Nov/Dec 2019
- Finalize Design – early 2020
- Secure Funding for Construction - 2020:
 - Infrastructure Canada, Green Infrastructure Funding
 - City of Toronto, Transportation Services Capital Budget
- Construction – TBD