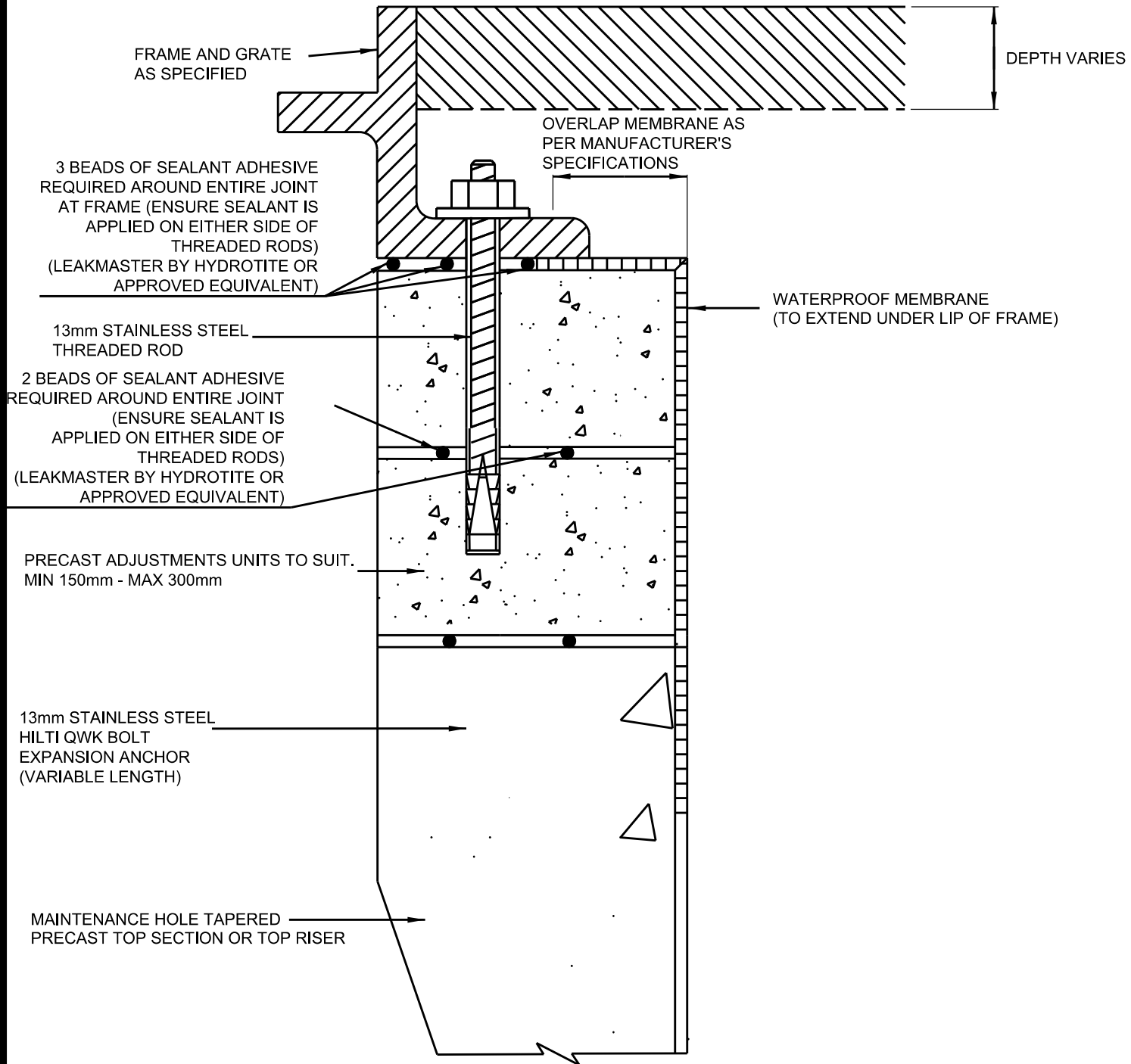


ROAD BASE/HARD SURFACE: MATCH TO EXISTING GRADE  
 SOFT SURFACE: MATCH TO EXISTING GRADE WITH MINIMUM  
 150mm TOPSOIL AND SODDING



NOTES :

1. ANCHORS SHALL ONLY BE DRILLED INTO MIN.150mm GRADE ADJUSTMENT UNITS. PLEASE REFER TO SELECTED PRECAST MANUFACTURER FOR MINIMUM THICKNESS REQUIRED FOR ANCHORING.
  2. TWO ANCHORS MIN. REQUIRED PER FRAME AT OPPOSITE SIDES UNLESS OTHERWISE SPECIFIED BY FRAME MANUFACTURER
- All dimensions are in millimetres unless otherwise shown.

	ENGINEERING & CONSTRUCTION SERVICES STANDARD DRAWING		REV 0	SEP 2019	
	<b>ANCHORING METHOD FOR MAINTENANCE HOLE</b>			<b>T-1120.06-1</b>	
				NTS	SHEET 1